



2014  
**DUTCH STAR**  
*Diesel Motor Coach*





**Dutch Star Exterior**

*Floor plan #4374 in Cognac Exterior*



# 2014 Dutch Star

The diesel coach that  
has earned its place as  
a leader in its class.

Dutch Star continues to raise the bar of what's possible for diesel motor coaches in its category. And considering its abundance of Newmar styling, craftsmanship and performance, that might just be a class by itself. A formidable 450HP Cummins® ISB engine is now standard, while a new feather sweep treatment adds a bold touch to Newmar's superb Full-Paint Masterpiece™ Finish, the mark of the most impressive exterior in the industry.

Delve a little deeper and you'll find all the amenities the modern traveler deserves, all riding comfortably on a Freightliner® XCR Custom Chassis.



WHEN YOU KNOW THE DIFFERENCE <sup>SM</sup>

# Alive with Style.



An exquisite exterior reflects the level of Newmar quality you'll find throughout your Dutch Star.

# Driven to new levels of comfort and convenience.



Dutch Star puts a wealth of surprising extras at your command, starting with a cockpit designed for safety and convenience. Newmar's exclusive Comfort Drive™ Steering, for example, assures that a light touch is all you need for long trips. (The sleek black control console shown is available exclusively with the Noka décor option.)



Comfort Drive™  
STEERING

The Flexsteel® driver and passenger seats are power-adjustable for added extravagance, and both also swivel to face the main cabin and create an entertaining setting. The captain's chair even features a recliner footrest—a comforting symbol that rank still has its privileges.

## Features at a glance:

- Full-Paint Masterpiece™ Finish with front protective film
- Comfort Drive™ Steering with adjustable control
- Lighted exterior storage compartments with cargo liner
- 8.0 kW Cummins Onan® Diesel Quiet Series Generator



*Freightliner Custom Chassis are renowned for their exceptional ride and handling, tight turning radius and extraordinary dependability.*



***Dutch Star Interior***

*Floor plan #4374 with Noka Décor Style and Wicker Maple Glazed Cabinetry – Both Inviting and Exciting.*



# Newmar makes it special. You make it home.

Dutch Star's expansive interior beckons you to enjoy the finer things. Curved, dimensional cabinetry adds a natural flow to the space, with fine-furniture styling mirrored in visibly crafted feet on the base cabinets' woodwork. Meanwhile, your galley offers a delicious collection of extras, including a pullout island, solid surface counters, plus residential style appliances and fixtures.

## ***Features at a glance:***

- Wicker Maple glazed cabinetry with mitered raised panel glazed doors
- Designer feature ceiling
- Polished solid surface countertop with stainless steel sink
- Porcelain floor with glass tile inserts in kitchen, bathroom and living area







FRIGIDAIRE

FRIGIDAIRE

Decorative items including a plate of cake and a vase of red roses.

# The best of times are about to get better.

Dutch Star makes an entertaining evening as effortless as a relaxing morning. The focal point of your living room is the L-shaped Flexsteel® sofa sleeper and matching Ultralux lounge. All perfectly positioned to give a commanding view of the built-in 50" Sony® HDTV, complete with backlit screen borders and the encompassing ambience of Bose® surround sound.

For simpler pleasures, a front kitchen floorplan on selected models gives you a charming patio overlook when seated at the hidden-leaf dinette table.

## **Features at a glance:**

- Extenda L Flexsteel® Ultralux leather sofa\*
- Sony® 50" TV/DVD system\*
- Combination desk/dinette with hidden leaf
- Sony® Surround Sound System with integrated sub-woofer

\* Optional



**Entertain in Style** ►

Dutch Star's accommodating living room is a place all are welcome to enjoy.



# Suite dreams.

Newmar's attention to detail is an industry legend—and the 2014 Dutch Star only adds to this tradition of unsurpassed craftsmanship. Enter the master bedroom to find an intricately designed hardwood headboard with luxurious inserts, overlooking a king-size bed with optional Sleep Number® mattress. Storage is everywhere you need it, with the look of fine furniture and the functional appeal of the most modern home.

The room's Sony® HDTV/DVD system makes for ideal entertainment. And vertical fascia accent lighting sets the mood for evenings that are truly unforgettable.

## ***Features at a glance:***

- King bed with quilted bedspread, shams and accent pillows
- Sony® LED TV and DVD player in bedroom
- Sleep Number® deluxe air mattress\*
- Power bed/sofa converts to privacy seating\*

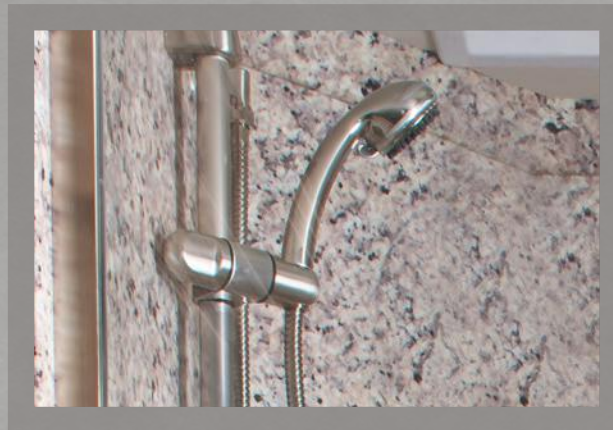
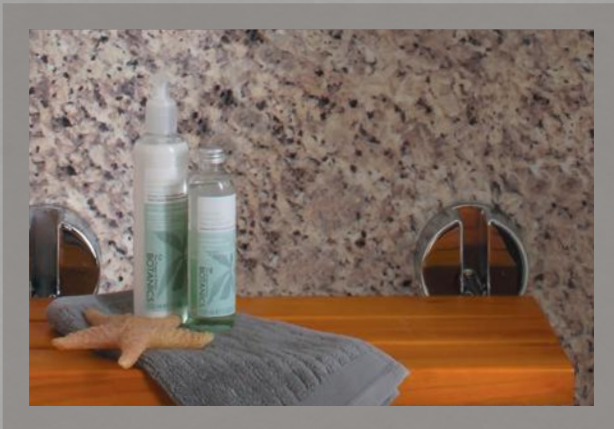


\* Optional

**Welcome to Your Dream** ►  
*Every night is a restful respite in the comfortable embrace of the Dutch Star bedroom.*







## Where quality is a fixture.

A new clear glass shower enclosure gives Dutch Star a residential caliber master bath, highlighted by maintenance-free Sentrel™ shower walls sampled from actual stone and granite slabs. The ample solid surface vanity is complemented by an oversized medicine cabinet, that's perfect for two, featuring drawers with easy-pull handles for quick access.

### ***Features at a glance:***

- Solid surface bathroom countertop with integrated bowl and glass listello back-splash inserts
- Sentrel™ acrylic shower walls with glass door
- One-piece washer/dryer\*
- Fold down teak shower seat\*

◀ **Left:** Solid-surface vanity with large couple-friendly medicine cabinet.

◀ **Right:** Clear glass shower enclosure features a natural stone appearance with wall surfaces that are maintenance-free.

\*Optional

## DUTCH STAR EXTERIOR DÉCOR



Cognac Exterior

---



Kona Exterior

---

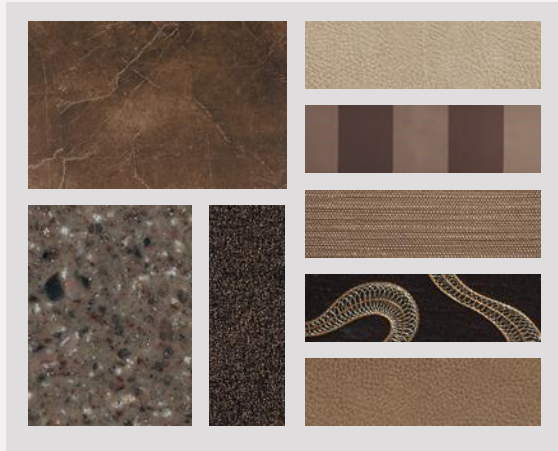


Espresso Exterior

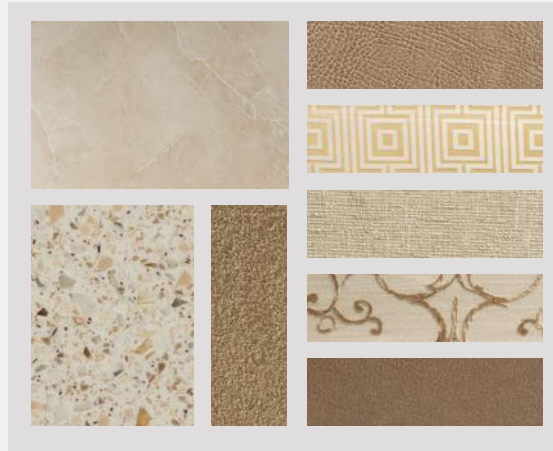
---



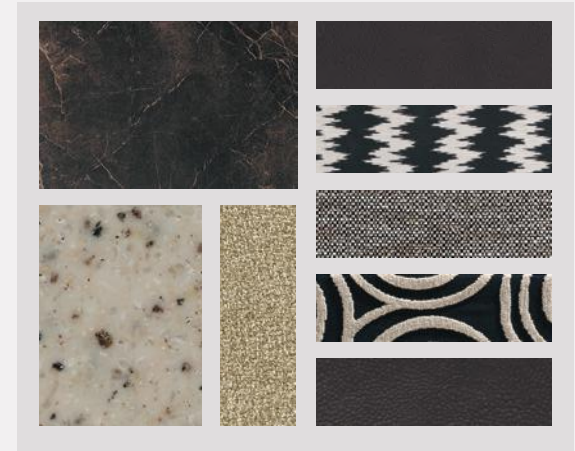
## DUTCH STAR INTERIOR DÉCOR



Mousse Interior



Toffee Interior



Noka Interior

## WOOD OPTIONS



Wicker Maple with Glazed Doors

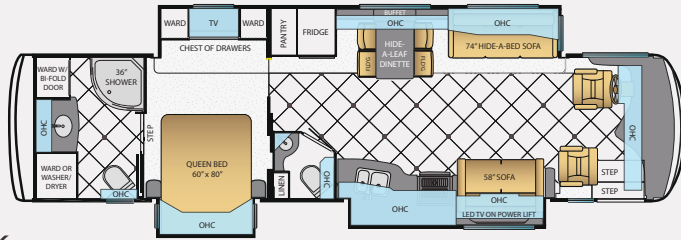


Verona Maple with Glazed Doors

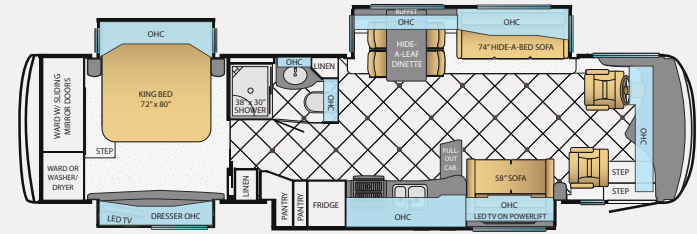


Manhattan Maple with Glazed Doors

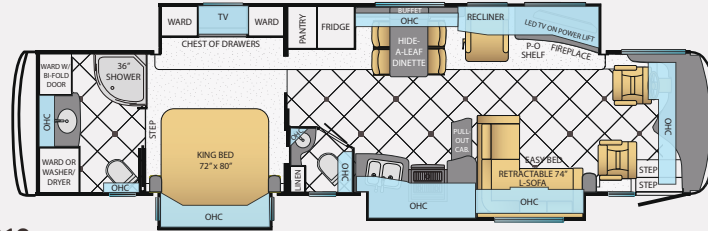
## DUTCH STAR FLOOR PLANS



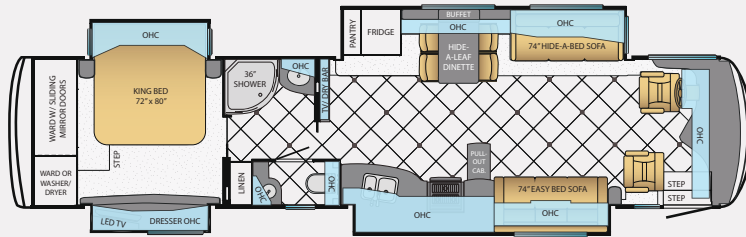
3736



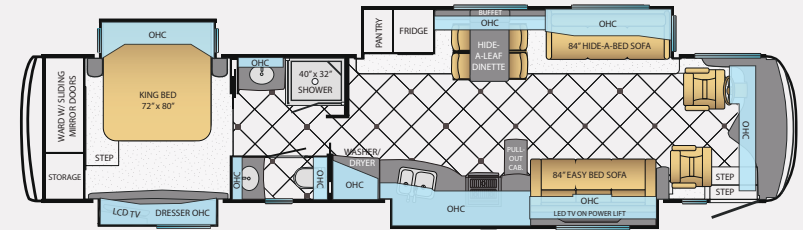
3738



4018



4038

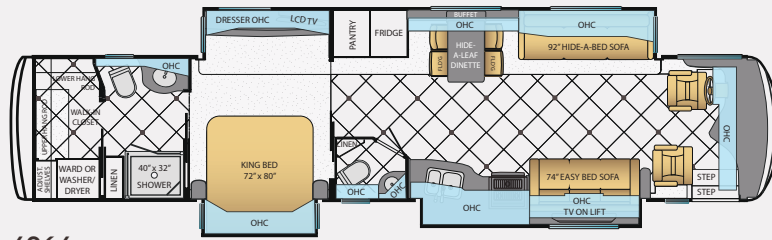


4360

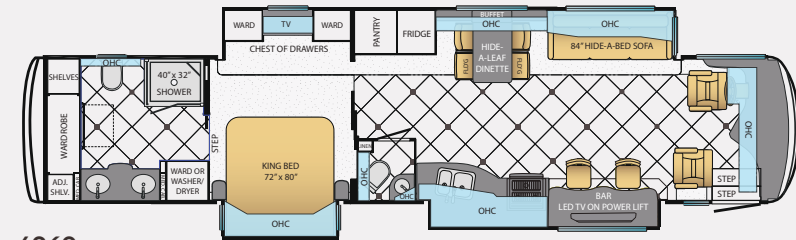
## FLOOR PLAN SPECIFICATIONS

Floor Plan	App. Overall Length	Width	App. Overall Height	Interior Width	Interior Height	Grey Tank	Sewage Tank	Water Tank	Propane Tank	Furnace
3736	37'11"	101.5"	12'7"	95.5"	84"	65 gal.	45 gal.	105 gal.	32 gal.	50,000 btu
3738	37'11"	101.5"	12'7"	95.5"	84"	65 gal.	45 gal.	105 gal.	32 gal.	50,000 btu
4018	40'9"	101.5"	12'8"	95.5"	84"	65 gal.	45 gal.	105 gal.	32 gal.	50,000 btu
4038	40'9"	101.5"	12'8"	95.5"	84"	65 gal.	45 gal.	105 gal.	32 gal.	50,000 btu
4360	43'9"	101.5"	12'10"	95.5"	84"	65 gal.	45 gal.	105 gal.	32 gal.	50,000 btu

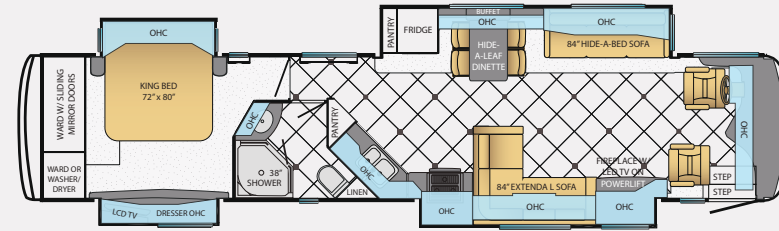
## DUTCH STAR FLOOR PLANS



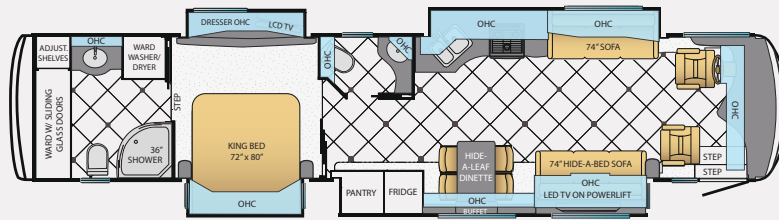
4364



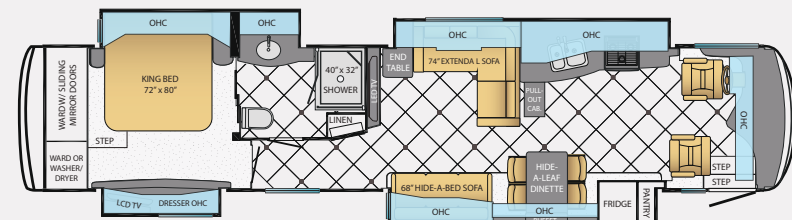
4369



4372



4373



4374

## FLOOR PLAN SPECIFICATIONS

Floor Plan	App. Overall Length	Width	App. Overall Height	Interior Width	Interior Height	Grey Tank	Sewage Tank	Water Tank	Propane Tank	Furnace
4364	43'9"	101.5"	12'10"	95.5"	84"	65 gal.	45 gal.	105 gal.	32 gal.	50,000 btu
4369	43'9"	101.5"	12'10"	95.5"	84"	65 gal.	45 gal.	105 gal.	32 gal.	50,000 btu
4372	43'9"	101.5"	12'10"	95.5"	84"	65 gal.	45 gal.	105 gal.	32 gal.	50,000 btu
4373	43'9"	101.5"	12'10"	95.5"	84"	65 gal.	45 gal.	105 gal.	32 gal.	50,000 btu
4374	43'9"	101.5"	12'10"	95.5"	84"	65 gal.	45 gal.	105 gal.	32 gal.	50,000 btu

# DUTCH STAR FEATURES & OPTIONS



## Chassis Features

*Built specifically for Newmar with the highest quality in handling, safety, performance, and dependability.*

- Freightliner XCR Chassis with 450Hp Cummins ISL Engine on 37' Floorplan
- Freightliner Tag Axle XCR Chassis with 450Hp Cummins ISL Engine on 40'-43' Floorplans
- Cruise Control
- Comfort Drive™ Steering With Adjustable Control
- Manual Tilt and Telescope Steering Column with VIP Smart Wheel
- Accushield Polished Aluminum Wheels with Trim Kit
- Recessed Fuel Fills with Crossover to Fill from Either Side
- Back-Up Alarm
- Anti-Lock Braking System
- Electronic Chassis Information Center in Dash
- Hydraulic Leveling Jacks



## Air Conditioning & Heating

*Total Comfort Air Conditioning and Hydronic Zone Heating systems make climate control simple and effective.*

- Oasis® Hydronic Zone Diesel Heating System
- Wall Mounted Heating and Air Conditioning Sensors
- Propane Gas Leak Detector
- Dash Heater and High Output Air Conditioner
- Driver and Passenger Dash Overhead Ventilation System

### OPTIONS

- Three 15M Penguin™ Heat Pump Central Air Conditioners, Energy Management System, 10 Kw Onan Generator on Slides
- Two 15M Penguin Heat Pump Air Conditioners



## Appliances

*All of the amenities of a fine home are integrated in the Newmar design, in both form and capabilities.*

- 30" Convection Microwave with Three-Burner Cooktop with Piezzo Ignition
- Norcold® 10 Cu.Ft.Refrigerator
- Black Panel Refrigerator Front
- One-Piece Washer/Dryer Prep
- Fireplace in Living Area\*

### OPTIONS

- Three-Burner Range with Oven with Glass Oven Door
- Dishwasher in a Drawer Located Below Cooktop
- Dometic® 12.3 Cu.Ft. Four-Door Refrigerator with Icemaker and Water Dispenser
- Norcold® 12 Cu.Ft. Four-Door Refrigerator with Icemaker and Water Dispenser
- Maytag® Residential Refrigerator with Icemaker and Water Dispenser, includes 2000 Watt Pure Sine Inverter & Six 6-Volt Batteries
- All Electric Maytag® Refrigerator, 2 Burner Cooktop, Eight 6-Volt Batteries, & 2800 Watt Inverter
- Dometic® Freezer on Pullout Tray in Exterior Baggage Compartment\*
- One-Piece Washer/Dryer \*
- Whirlpool® Two-Piece Washer/Dryer \*
- External Entertainment Center in Storage Compartment with 32" Sony® LED TV
- Central Vacuum with Deluxe Tool Kit



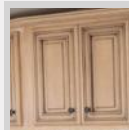
## Audio, Video & Accesories

*Stay entertained on the road and off, with spectacular visual and sound options from industry leaders.*

- Sony® 46" LED TV on Televator in Living Area\*
- AM/FM Dash Radio with CD Player and Auxiliary Jack
- Sony® Surround Sound System with Sub-Woofer
- High Definition Wiring
- Rearview Color Monitor System with Audio
- Two Bedroom Radio Speakers
- Satellite Prep
- Side View Cameras Displayed Onto Rear View Monitor Screen
- Winegard® Digital TV Antenna

### OPTIONS

- Sirius Satellite Radio Capability (Does not include monthly subscription)
- Dash Radio with Portable TomTom® Navigation System
- Sony® 40" LED TV in Front Overhead
- Sony® 46" LED TV on Televator Behind Door Side Sofa
- External Entertainment Center in Sidewall with 40" Sony® LED TV
- Automatic Satellite without Receiver
- In-Motion Satellite without Receiver
- Power Lift Digital TV Antenna
- Pre-programmed Universal Remote Control



## Cabinets & Furniture

*Amish craftsmanship and elegance in design meld the wood cabinetry and furniture seamlessly with the Newmar interior.*

- Concealed Hinges on Cabinet Doors
- Polished Solid Surface Countertop in Kitchen with Undermounted Stainless Steel Sink
- Polished Solid Surface Countertop in Bathroom with Integrated Bowl
- Polished Solid Surface Countertop on Bedroom Nightstands and Chests
- Residential Style Full Extension Ball Bearing Drawer Guides
- Flexsteel® Ultralux Leather Sofa and Driver/Passenger Seats
- Driver/Passenger Seats with Six-Way Power, Power Lumbar, Ergo-Flex Arms and Footrest
- King Bed with Radius Cornered Mattress\*
- Lifts on Bed
- Passenger Seat Work Station
- Plush Pillow Top Mattress
- Pullout Pantry Shelves\*

### OPTIONS

- Verona Maple Cabinets
- Wicker Maple Cabinets
- Extenda L Sofa\*
- Heated Driver and Passenger Seats
- 75" Dinette & 92" Hide-A-Bed Sofa, Televator TV with Fold and tumble Sofa\*
- Combination Desk/Dinette with Roll Away Table with Two Fixed and Two Folding Chairs
- Combination Desk/Dinette with Free Standing Hidden Leaf Table with Two Fixed and Two Folding Chairs
- Combination Desk with Buffet Table with Two Fixed and Two Folding Chairs
- Flexsteel® Ultralux Leather Euro-style Booth Dinette \*
- Flexsteel® Ultralux Leather Extenda Flex Dinette
- Fold and Tumble Sofa with Air Mattress\*
- Storage Shelves Recessed into Rear Cap of Rear Wardrobe Floorplans
- Queen Bed \*
- Sleep Number® Premier Air Mattress
- Power Bed/Sofa Base with Sleep Number® Premier Air Mattress



## Electrical Features

*A Newmar coach's electrical and lighting system is designed for maximum reliability, functionality, and style.*

- 50 Amp Electrical Service with Flexible Cord
- 110 Volt Exterior Recept
- 12 Volt Auxiliary Recept on Dashboard
- Four 6-Volt House Batteries on Pullout Tray
- 5 Watt Solar Panel
- 2000 Watt Inverter
- Midship Side Turn Signals
- Halogen Lights Recessed in Ceiling and Overhead Cabinets

Lighted Wardrobes

ICC Light Flasher Switch

Interior Courtesy Lights

Accent Lights in Slideout Fascia Trim

Automatic Generator Start on Low Battery or Temperature Setting

Battery Disconnect Switch

Emergency Engine Start Switch

Engine Block Heater

Exterior Security Lights

Manually Operated Hold to Run Slideout Switch

KIB Switches for Interior Lights

Recept with Built in USB Charger at Dinette and Bedroom Dresser Cabinet

TV jack

**OPTIONS**

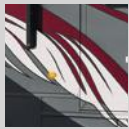
Solar Prep

Recessed Docking Lights

LED Lights in Place of Halogen

Energy Management System

Power Rewind Reel with 50' Cord



**Exterior Features**

*The Full-Paint Masterpiece Finish is one of the most beautiful and durable in the industry, with the goal of a perfect finish, every time.*

Full-Paint Masterpiece Finish with Front Protective Film

Assist Handle at Entrance Door

Convex Exterior Mirrors with Remote Control, Defrost and Turn Signals

Mud Flaps

Rear Protective Tow Guard

Stainless Steel Kick Panel at Entrance Door

Undercoating

Rear Ladder

Lighted Exterior Storage Compartments with Cargo Liner

Automatic Step for Entrance Door

Rear Hitch for Towing Car

**OPTIONS**

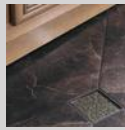
Large Chrome Exterior Mirrors

Large Storage Tray with Access from One Side or Either Side\*

Large Storage Tray

Power locking Baggage Doors, Keyless Entry with Door Bell and Touch Pad

Automatic Height Compensating Step for Entrance Door



**Interior Features**

*Flooring – both tile and carpet – is installed with Newmar’s own in-house process, ensuring the best in quality and longevity, as well as the finest fit.*

MCD Window Shades

MCD Power Shades at Windshield and Manual Shades at Driver & Passenger Side Windows

Mini Blinds in Bathroom

Porcelain Floor with Glass Tile Inserts in Kitchen, Bathroom and Living Area

Carpeting on Slideout Floors

Power Flush Stepwell Cover

Dash Panel Color Coordinated ABS

Decorative Wall Art

Interior Assist handle at Main Entry Door

Quilted Bedspread with Shams and Accent Pillows

10 Bc Fire Extinguisher, Smoke Detector and Carbon Monoxide Detector

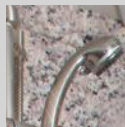
**OPTIONS**

Safe Located in Bedroom Wardrobe

MCD Power Window Shades

Floor Tile Extended into Bedroom Area\*

Shoe Storage Shelves Recessed into Rear Cap Wardrobe



**Plumbing & Bath Features**

*The Demand Water System’s residential flow response ensures that the comfort and reliability of home are never far away.*

Demand Water System with SHURflo® Pump

Sentrel Acrylic Shower Walls with Glass Door

Dometic® Traveler China Bowl or Macerator Stool\*

Monitor Panel

Water Pump Switches Located in Bathroom, Kitchen and Exterior

Exterior Shower

Sewage Holding Tank Rinse

Water Filter

**OPTIONS**

Assist Handle in Shower

Fold-Down Shower Seat

110 Volt Heat Pads for Holding Tanks

Power Water Hose Reel



**Construction Features**

*From the chassis on up, Newmar coaches are built to be dependable, durable, comfortable, and beautiful.*

BriteTEK™ Roof with Walkable Decking

Gelcoated Fiberglass Exterior Sidewalls, Front and Rear Caps

Aluminum-Frame Sidewalls & Roof Construction, 16” on Center

5/8” Foam Insulation Laminated in Sidewalls & Ceiling

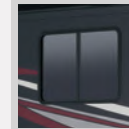
Mechanical Lock Arms on All Slideout Rooms

Polar Pak R19 Batten Insulation in Roof

**OPTIONS**

One Piece Molded Fiberglass Roof

Power Baggage Door Locks, Keyless Entrance Door with Touch Pad and Door Bell



**Windows, Vents & Awnings**

*Experience as much – or as little – of the outdoors as you want in comfort and style.*

Dometic® Weather Pro Power Side and Oasis Power Front Entrance Door Awning

One-Piece Bonded/Tinted Windshield

Double-Pane Tinted Safety-Glass Windows

Fan-Tastic® Vent with Rain Sensor in Kitchen and Bathroom

Dometic® Slideout Covers

Shower Skylight

**OPTIONS**

Dometic® 9000 Window Awning

Kitchen Window

Driver Side Power Window

\*Check with dealership on floor plan availability and complete listing of features.

## DUTCH STAR CONSTRUCTION

Dutch Star, a high performing motor coach, has a Freightliner® Custom Chassis with Independent Front Suspension. Its tubular truss web frames and substructure beams form a foundation stable enough to allow extensive pass through storage. This allows Dutch Star to expand beyond its chassis footprint, creating extra living space. Its Cummins® ISL 400 or 450HP engine gives you incredible maneuverability and power, even on steep inclines. And if you should ever need it, Freightliner Custom Chassis' roadside assistance program is in place for the entire warranty period.



### ROOF R-VALUE = 19

- a. BriteTEK™ Roof (optional one-piece fiberglass roof)
- b. 9mm Wood Decking
- c. Fiberglass Batten Insulation
- d. A/C Ducting
- e. Aluminum Roof Truss
- f. Kraft Paper Vapor Barrier
- g. 5/8" Bead Foam
- h. 3/16" Panel
- i. Padded Vinyl Overlay

### SIDEWALL R-VALUE = 11

- j. 3/16" Plywood Interior Wall
- k. 5/8" Bead Foam
- l. Kraft Paper Vapor Barrier
- m. Fiberglass Batten Insulation
- n. 3/16" Plywood Exterior Wall
- o. Composite One-Piece Gel Coat Exterior Sidewall
- p. 16" On Center Aluminum Framing with 3 1/2" Header

### FLOOR R-VALUE = 16

- q. Carpet/Tile
- r. Carpet Padding
- s. 5/8" Floor Decking
- t. Fiberglass Batten Insulation
- u. 2" x 3" Wood Framing
- v. Polyethylene Moisture Barrier
- w. Foam Panels for Noise Protection
- x. Aluminum Ducting

### BASEMENT R-VALUE = 4

- y. Cargo Liner
- z. 3/8" Floor Decking
- aa. 3/16" Luan Panel
- bb. 1 1/2" Bead Foam
- cc. Aluminum Sheeting (Prevents Distortion)

- 1. 13.5M Penguin™ Heat Pump Central Air Conditioners (2)
- 2. One-Piece Windshield
- 3. Coated Aluminum Wheels
- 4. Double-Pane Tinted Safety Glass Windows
- 5. Side-Hinged Baggage Doors w/Optional Pullout Tray

## SPECIFICATIONS

Floor Plan	Engine HP	Axle Ratio	Fuel Cap.	Wheel Base	Front GAWR*	Rear GAWR*	Tag GAWR*	GVWR*	GCWR*	App. UVW	App. NCC
3736	450	4.78	100 gal.	242	14,600 lb.	23,000 lb.	0	37,600 lb.	47,600 lb.	29,900 lb.	7,700 lb.
3738	450	4.78	100 gal.	242	14,600 lb.	23,000 lb.	0	37,600 lb.	47,600 lb.	29,700 lb.	7,900 lb.
4018	450	4.63	100 gal.	252+TAG	14,600 lb.	20,000 lb.	10,000 lb.	44,600 lb.	54,600 lb.	34,200 lb.	10,400 lb.
4038	450	4.63	100 gal.	252+TAG	14,600 lb.	20,000 lb.	10,000 lb.	44,600 lb.	54,600 lb.	33,400 lb.	11,200 lb.
4360	450	4.63	150 gal.	288+TAG	17,000 lb.	20,000 lb.	10,000 lb.	44,600 lb.	54,600 lb.	35,000 lb.	9,600 lb.
4364	450	4.63	150 gal.	288+TAG	17,000 lb.	20,000 lb.	10,000 lb.	44,600 lb.	54,600 lb.	35,700 lb.	8,900 lb.
4369	450	4.63	150 gal.	288+TAG	17,000 lb.	20,000 lb.	10,000 lb.	44,600 lb.	54,600 lb.	35,600 lb.	9,000 lb.
4372	450	4.63	150 gal.	288+TAG	17,000 lb.	20,000 lb.	10,000 lb.	44,600 lb.	54,600 lb.	35,000 lb.	9,600 lb.
4373	450	4.63	150 gal.	288+TAG	17,000 lb.	20,000 lb.	10,000 lb.	44,600 lb.	54,600 lb.	35,700 lb.	8,900 lb.
4374	450	4.63	150 gal.	288+TAG	17,000 lb.	20,000 lb.	10,000 lb.	44,600 lb.	54,600 lb.	35,900 lb.	8,700 lb.

Lengths, heights, widths and dry weights are approximate. Weight will vary based on optional equipment added to the above base weight.

**GAWR:** Gross Axle Weight Rating is the maximum permissible weight for an axle.

**GVWR:** Gross Vehicle Weight Rating is the maximum permissible weight for a fully loaded motor coach.

**GCWR:** Gross Combination Weight Rating is the value specified by the manufacturer of the vehicle as the maximum allowable loaded weight of this motor coach and any towed trailer or towed vehicle.

**UVW:** Unloaded Vehicle Weight is the weight of this motorcoach as built at the factory with full fuel, engine oil and coolants. The UVW does not include cargo, fresh water, propane gas or dealer-installed accessories.

**NCC:** Net Carrying Capacity is the maximum weight of all occupants, including the driver, personal belongings, food, fresh water, waste water, propane gas, tools, tongue weight of towed vehicle, dealer installed accessories, etc., that can be carried by the motor coach.

\*Specifications supplied by the chassis manufacturer.

# Trust.

## The strongest possible foundation for a motor coach.

According to Newmar president Matthew Miller, "Customers say they're loyal to us because they trust us to stand behind our products – from support, parts and service to paying our warranties. It feels good to own a coach that has all of that behind it."

How do we sustain this high level of service? At Newmar, there's a Miller way of doing things. These principles guide us every day. Courtesy. Integrity. And reliability. So when you buy from Newmar, you know that every single person who touches your coach or talks with you has your back. Period.



▲ Mahlon Miller, Newmar founder, and Matthew Miller, Newmar president, lifelong motor coach enthusiasts

# Our Partners.

## Where the finest names in quality and performance are along for the ride.

Newmar strives to offer the best motor coach experience possible, and to that end we partner with the most prestigious names in mobile lifestyle, entertainment, and technology. Depending on the Newmar motor coach you choose, our compliments range from Sony's comprehensive audio, video, communications and information technology to Freightliner and Spartan's superior and dependable chassis designs. Newmar only accepts best-in-class performance from the most trusted names in the business. At Newmar, that's our difference. And our promise.



## 2014 Dutch Star

### **NEWMAR EXPRESS LIMITED WARRANTY**

Every Dutch Star Diesel Pusher is backed by Newmar's one-year limited warranty/unlimited miles. Ask your Newmar dealer for details.

### **LIMITED FIVE-YEAR STRUCTURAL WARRANTY**

If any part of your Newmar recreational vehicle superstructure (which is the steel/aluminum structure of the sidewall, roof or frame) fails to perform properly within five years from the date of purchase because of faulty workmanship or material supplied by Newmar, it will be repaired without charge for either parts or labor by Newmar. This structural warranty is available only to the original purchaser and is non-transferable.

*Some features in our literature are optional. Colors and finishes are photographic representations. The actual materials may look different. Prices, specifications and floorplans are subject to change at Newmar's discretion, without prior notice or obligation. Please see your dealer for actual samples and specifications.*



WHEN YOU KNOW THE DIFFERENCE <sup>SM</sup>

NEWMAR CORPORATION  
355 N DELAWARE ST  
PO BOX 30  
NAPPANEE IN 46550-0030  
574-773-7791 Fax 574-773-2895

[www.newmarcorp.com](http://www.newmarcorp.com)

