

EXCURSION 2014

EXCURSION®



FLEETWOOD RV

EXPERIENCE THE FREEDOM YOU DESERVE

Engage in the luxurious craftsmanship of the Excursion, bath in the beauty of the contemporary decor and embrace the freedom of the open road. Your Excursion awaits you.



EXCURSION 35B SHOWN IN BRONZED ONYX INTERIOR DÉCOR WITH CINNABAR WOOD CABINETRY



WHY BUY EXCURSION?

State-of-the-art Components The Hide-Away 40" LCD HDTV in the 33A galley provides extra counter top space when it's hidden in the "up" position. The optional Hide-A-Loft adds a drop-down queen bed to any Excursion Floorplan.

Lavish Living Space The wide body interior and 84" ceiling height are designed to maximize your available living space.

Luxurious Gallery The spacious galley shows off polished solid-surface countertops, residential refrigerator and glass-tile

backsplash.

Low Profile Design With a lower profile design, the Excursion comfortably fits under a 12 ft. garage door but still maintains the interior height and space you've come to expect.

Cummins® 300 HP Diesel Engine The compact Excursion diesel pusher is equipped with 300 HP Cummins ISB 6.7L engine with exhaust brake, providing exceptional performance.



2014 GRAPHICS AND DÉCOR



Both inside and out, there is a wide selection of colors, styles and finishes. From the moment you lay your eyes on an Excursion, the high-style graphics and décor collection welcome you with gracious beauty and contemporary design. We've paid attention to every detail. So wherever you are, you'll feel right at home.



BRONZED ONYX



PLATINUM SANDSTONE



TINTED PEARL

	BRONZED ONYX	TINTED PEARL	PLATINUM SANDSTONE	CABINETRY
SOFA				CINNABAR
ACCENT				
BEDSPREAD				SPICE
	SIDE A	SIDE A	SIDE A	
	SIDE B	SIDE B	SIDE B	
COUNTERTOP				
FLOORING				
CARPET				

STANDARD FEATURES AND OPTIONS

INTERIOR THROUGHOUT

- 120V/12V AC/DC Converter
 - 34,000 BTU Furnace (33A, 35B, 35C)
 - 20,000/25,000 BTU Dual Furnaces (33D)
 - 6 Gallon Quick Recovery Water Heater (Gas/Electric)
 - Dual 6V Deep-Cycle House Batteries
 - Dual Low-Profile A/C High Efficiency, Chill Grills & Bedroom Heat Pump
 - LED Lighting
 - HDMI Video System
 - Centralized Control Monitoring
 - Soft-Touch Vinyl Ceiling
 - 1200-Watt Inverter (33A, 33D)
 - 84" Interior Ceiling Height
 - PEX Plumbing System
 - Crown Molding
 - Fabric Lined Storage
 - Spacious Wide Body Design
 - Day/Night Pleated Shades
 - Deluxe Roller Bearing, Full-Extension Drawer Guides & Transit-Ship Locks
 - Demand Water Pump w/Filter
 - Waterpump Switches in Multiple Locations
 - Raised-Panel Hardwood Cabinet Doors & Hardwood Cabinet Drawers
 - Wall-to-Wall Vinyl Tile Flooring
 - Wall Sconce Lighting (Select Models)
 - Fan-Tastic® Power Roof Vent w/Wall Switch (2)
 - Water Heater Bypass
 - Whole Coach Water Filtration System
 - Wood Finish Return Air Intake for Furnace
- Optional*
- CSA Package (Canadian Specs)**
 - Central Vacuum System
 - Manual Footrest - Passenger
 - Power Passenger Seat w/Power Foot Rest
 - Washer/Dryer Combo
 - Hide-A-Loft Drop Down Queen Bed w/Driver & Passenger Curtains
 - Driver/Passenger Pedestal Table
 - Satellite Radio
 - Manual Roller Shades

DRIVER CONVENIENCE

- Automotive Style Wrap Around Dash
 - 3-Point Seatbelts at Driver & Front Passenger Seats (w/Adjustable Shoulder Straps)
 - Auxiliary Start Circuit Switch
 - Battery Disconnect System
 - Cruise Control
 - Power Driver/Front Passenger Shade/Sun Visor
 - Driver/Front Passenger Soft-Touch Captain's Chairs w/Manual Reclining Back/Slide Controls
 - Denso High-Output Auto A/C Heater Combo
 - Passenger Cup Holder Console w/Integrated Magazine Rack
 - Radio Switch Main/Auxiliary Power
 - Air Suspension Dump Switch
 - Driver Console Cup Holders
 - Tilt/Telescoping Steering Wheel
 - 110-Volt Power Outlet at Dash
 - (2) 12-Volt Power Outlets at Dash
 - Radio w/ AM, FM, CD & DVD
 - Color Back-Up Monitor
 - Remote/Heated Rear-View Mirrors w/ Side-View Cameras
 - Intermittent Wiper Control
 - Soft-Touch Automotive Dash
 - Dual Monitors
- Optional*
- Auto Generator Start
 - Power Driver Seat

GALLEY

- Convection Stainless Steel Microwave Oven w/Built-in Range Hood & Lights
 - Adjustable Cabinet Shelves (Select Cabinets)
 - Dometic® 8 cu.ft. 2-Door Refrigerator (33A, 33D)
 - Residential Refrigerator w/2000 Watt Inverter & 2 additional House Batteries (Standard on 35B, 35C)
 - Single-Handle Galley Faucet w/Pullout Sprayer
 - Hardwood Overhead Face Frames
 - Designer Series - Polished Solid-Surface Countertop w/Deco Edge
 - Solid-Surface Sink & Range Covers
 - Full Mosaic Glass Tile Backsplash
 - Under-Galley Shelving & Wastebasket
 - Hi-Def Laminate Dinette Tabletop
 - Cabinet Toe Kicks
 - Large, 50/50 Dual Stainless-Steel Sink
 - LED Task Lighting
 - Galley Window w/Mini Blinds
 - Pull Out Pantry
 - 3-Burner High-Output Cooktop
 - Dream Dinette Mechanism (33D)
- Optional*
- Residential Refrigerator w/2000 Watt Inverter & 2 additional House Batteries (33A/33D)
 - Dometic 8 cu. ft. Refrigerator w/Ice Maker (33A, 33D)

LIVING ROOM

- Sony® 40" LED HDTV Blu-ray® Ready
- Sony 5.1 Home Theater System w/Built-in AM/FM/DVD & Surround Sound Speakers
- Flexsteel® Soft Touch Residential Style Seating
- TV Antenna w/Signal Booster
- Entry Assist Handle
- Hardwood Overhead Face Frames

BEDROOM

- Exclusive Dream Easy Mattress
 - Overhead Cabinets
 - Designer Reversible Comforter
 - Décor Pillows
 - Day/Night Shades
 - Rear Speakers
 - Dual 110V Outlets
 - Chair Rail Molding
 - Dual-Tone Wall Accents
 - Full Length Hanging Wardrobe w/Adjustable Shelves
 - Under Bed Storage
 - Night Stands
- Optional*
- Queen Dream Easy Memory Foam Mattress
 - Sony® 32" LED HDTV

BATHROOM

- A/C Venting
- Glass Shower Enclosure w/Skylight
- Brushed Nickel Single-Handle Faucet
- One Piece Fiberglass Shower w/Convenience Shelf
- Adjustable Shelving (Select Cabinets)
- Stainless Steel Sink
- Brushed Nickel Towel Bars & Rings
- Hardwood Bath Door/Trims
- Porcelain Toilet w/Water Saver
- LED Task Lighting

SAFETY/CONVENIENCE (INTERIOR)

- Carbon Monoxide Detector/Alarm
- Energy Management System (EMS) w/Soft-Start
- Multiple Seatbelt Locations
- Propane Detector/Alarm
- Smoke Detector/Alarm
- Fire Extinguisher
- 30" Wide Entry Door

EXTERIOR THROUGHOUT

- Hydraulic 4-Point Automatic Levelers
 - 50-Amp Service w/LED Power Cord Indicators
 - 6.0 kW Onan® Quiet Diesel Generator
 - Awning Rail/Drip Molding
 - LED Clearance Lights
 - Door-side 110-Volt Patio Receptacle
 - Pre-Wired For Easy DSS Antenna Installation
 - Single-Pane Tinted Windows w/Screens
 - Fiberglass Wheel-Well Trims
 - Full-Body Paint
 - Power Patio Awning w/Wind Sensor Retract
 - Fiberglass Front Cap
 - Fiberglass Rear Cap w/High-Mounted Center Brake Light
 - Water Pump Switch (Located In Service Compartment)
 - Pre-Wired for Exterior Entertainment System (located in Basement)
 - Park Cable Receptacle
 - Utility Compartment w/Exterior Shower
 - Pet Window
- Optional*
- Protective Front Mask
 - Electrical System w/ Neutral Loss Protection
 - Dual Glazed Windows

AUTOMOTIVE

- Fog Lamps
- Mud Flaps
- Single-Motor Windshield Wipers w/Wet Arm
- Under-hood Utility Light
- Large One-Piece Bonded Windshield
- Heated Power Exterior Mirrors w/Turn Signals
- 22.5" Aluminum Wheels

SAFETY/CONVENIENCE (EXTERIOR)

- 20' Sewer Hose
- 4-Wheel ABS Brakes
- Automotive Safety Glass
- Daytime Running Lights
- Easy-Sweep Flooring at Entry Step
- Entry Door w/Screen Door & Deadbolt Lock
- Entry Assist Handle
- Power Entry Step
- Toilet Tank San-T-Flush™ System
- Touch Sensor Tank Monitoring System
- Rear, Front and Side Marker Lights (Select LED)
- Porch Light (Door-side)
- Large Egress Window in Bedroom (2 in 33A)

STORAGE

- Continuous One-Piece Compartment Seals
- Pass-Through Storage
- Lighted Compartments
- Large Lighted Roto- Molded] Polyethylene, w/Wash-Out Compartment Drains
- Side Swing, Insulated Aluminum Luggage Doors w/ Single Paddle Latch & Corrosion Resistant Steel Hinges

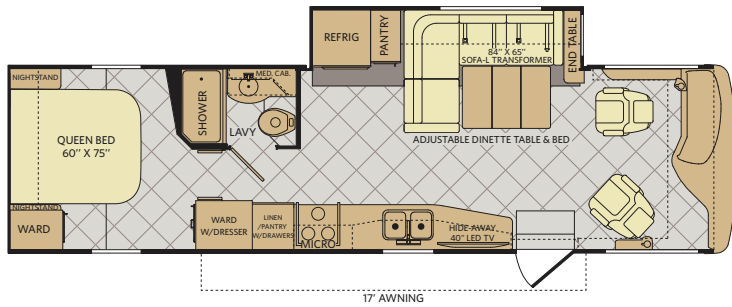
BODY STRUCTURE

- Aluminum Interlocking Floor/Wall/Ceiling Framing
- Heated Water & Holding Tank Compartments
- Radius Roof with Ducted A/C
- Basement Storage
- Vacu-Bond® Floors & Ceilings
- Vacu-Bond Walls w/Smooth, High-Gloss Exterior Fiberglass

*Not all options are available on all floor plans. See your Fleetwood dealer for details.
**CSA standards may require substitution or deletion to achieve conformance.

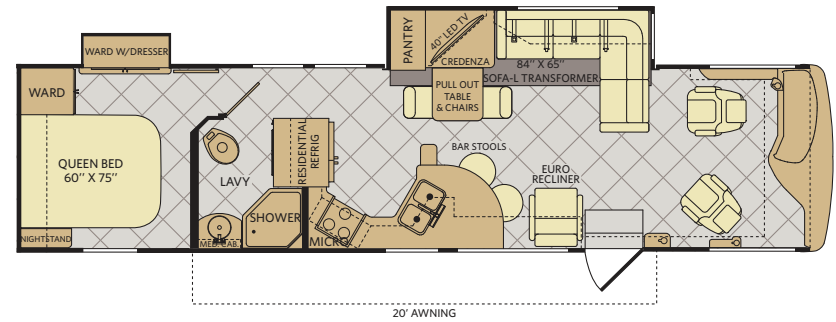
EXCURSION FLOOR PLANS

33A



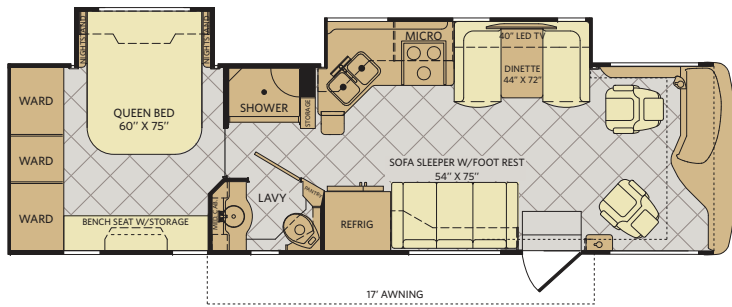
Available options: 084, 126, 144, 146, 186, 217, 853

35B



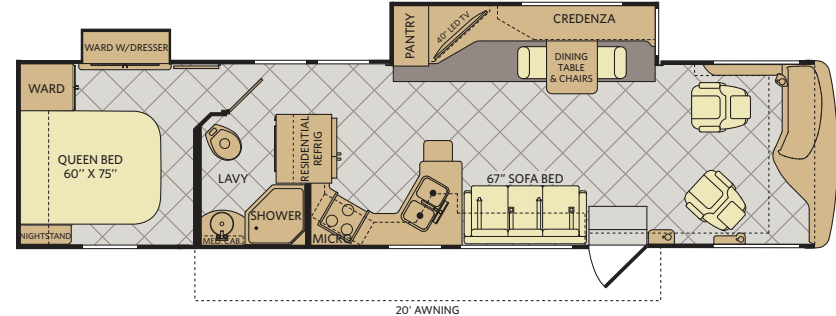
Available options: 084, 126, 186, 217, 853

33D



Available options: 084, 126, 144, 146, 186, 217, 853

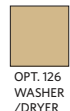
35C



Available options: 084, 126, 186, 217, 853

FLOOR PLAN OPTIONS

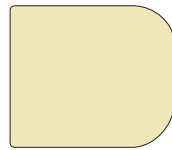
OPT. 084
BEDROOM
32" LED TV



OPT. 126
WASHER
/DRYER



OPT. 186
DRIVER/PASSENGER
PEDESTAL TABLE



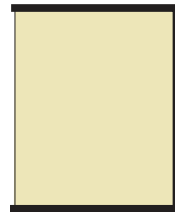
OPT. 853
QUEEN BED
w/MEMORY FOAM
60" X 75"



OPT. 144
RESIDENTIAL REFRIG



OPT. 146
DOMETIC & CU. FT.
REFRIG
w/ICE MAKER



OPT. 217
HIDE-A-LOFT
DROP DOWN
QUEEN BED 60" X 80"

WEIGHTS & MEASUREMENTS

CHASSIS	POWER BRIDGE®			
	MODELS	33A	33D	35B
Wheelbase (inches)	208"	208"	242"	242"
GVWR (lbs) ¹	26,000	26,000	26,000	26,000
Front GAWR (lbs) ²	10,500	10,500	10,500	10,500
Rear GAWR (lbs) ²	17,500	17,500	17,500	17,500
GCWR (lbs) ³	30,000	30,000	30,000	30,000
Hitch Rating Weight (lbs) [†]	10,000	10,000	10,000	10,000
Fuel Capacity (gal)	90	90	90	90

POWER BRIDGE® CHASSIS

Model: Freightliner® XCS Series
Engine: Cummins® ISB 6.7L w/Exhaust Brake
Transmission: Allison® 2100 MH 6-Speed
 w/Electronic Shifter

Alternator: Delco Remy 160 Amp
Torque: 660 lb-ft @ 1,600 RPM
Horsepower: 300HP

DIMENSIONS & CAPACITIES

MODELS	33A	33D	35B	35C
Overall Length (inches) ⁴	33' 11"	33' 11"	36' 9"	36' 9"
Overall Height (suspension inflated)	11' 10"	11' 10"	11' 10"	11' 10"
Overall Height (suspension deflated)	11' 7"	11' 7"	11' 7"	11' 7"
Overall Width (maximum) ^{5,6}	102"	102"	102"	102"
Interior Height (maximum)	84"	84"	84"	84"
Interior Width (maximum)	96"	96"	96"	96"
Interior Storage (cu. ft.)	166	140	170	170
Exterior Storage (cu. ft.)	140	133	161	161
Fresh Water Holding Tank (gal)	88	88	88	88
Grey Water Holding Tank (gal)	60	60	60	60
Black Water Holding Tank (gal)	32	32	32	32
Appliance Propane Tank (gal) (WC) ⁷	28.2	28.2	28.2	28.2
Water Heater Tank (gal)	6	6	6	6

ADDENDUMS

- GVWR (Gross Vehicle Weight Rating) is the maximum permissible weight of this fully loaded motorhome. The GVWR is equal to or greater than the sum of the (UVW) unloaded vehicle weight plus the (OCCC) occupant cargo-carrying capacity.
- GAWR (Gross Axle Weight Rating) is the maximum permissible loaded weight a specific axle is designed to carry.
- GCWR (Gross Combined Weight Rating) is the value specified by the motorhome manufacturer as the maximum allowable loaded weight of this motorhome with its towed vehicle. Towing and braking capacities may be different. Refer to Fleetwood and chassis manufacturer's manuals for complete information.
- Length measured from front bumper to rear bumper (excludes accessories).
- Excludes safety equipment and awnings.
- Motorhomes feature a body width over 96" which will restrict your access to certain roads. Before purchasing, you should research any state and/or province road laws which may affect your usage.
- Tank manufacturer's listed water capacity (WC). Actual propane capacity is 80% of water listing as required by the safety code.

† The chassis manufacturer recommends the installation of a supplemental brake control system to activate the brakes on the vehicle or trailer you are towing. Hitch receiver ratings expressed are maximum for the hitch receiver installed and may require the purchase of additional equipment that is dependent on the weight of the towed load. Consult with hitch receiver manufacturer for further information.

†† Minimum Towable Load is the available weight, up to GCWR, when the coach is fully loaded to maximum GVWR. However, if the coach is loaded to something less than maximum GVWR, that extra available weight can be added to your Towable Load. For example, if your coach is loaded to 1000lbs less than maximum GVWR, your Towable Load increases accordingly.

* UVW and OCCC are found on the label containing the federal certification tag in each RV.

IMPORTANT—PLEASE READ: Product information, photography and illustrations included in this publication were as accurate as possible at the time of printing. For further product information and changes, please visit our website at www.fleetwoodrv.com or contact your local Fleetwood RV dealer. Prices, materials, design and specifications are subject to change without notice. All weights, fuel, liquid capacities and dimensions are approximate. Fleetwood RV has designed its recreational vehicles to provide a variety of uses for its customers. Each vehicle features optimal seating, sleeping, storage and fluid capacities. The user is responsible for selecting the proper combination of loads (i.e., occupants, equipment, fluids, cargo, etc.) to ensure that the vehicle's capacities are not exceeded.

Excursion

WHY FLEETWOOD RV?



Quality

There's no cutting corners. Skilled craftsmen build every Fleetwood RV for maximum durability and longevity.



Trust

More people trust Fleetwood RV. After all, we've spent over 60 years perfecting RVs, earning the loyalty of generations of RVers.



Passion

We're truly passionate about the RV lifestyle. Fleetwood RV was founded by RV enthusiasts, and that tradition continues today.



Safety

You've got precious cargo. So we've engineered dozens of innovative safety features into our motor homes to give you more peace of mind.



Service

Help is nearby with 24/7 emergency Fleetwood RV Trusted Roadside Assistance*. And when you need an upgrade or repair, you'll find Fleetwood RV dealers all across North America ready to assist you.



Warranty

Exclusive RV OwnerCare warranty. See your Fleetwood RV dealer for details.

* All 2014 Fleetwood RV motorhomes include a 1-year emergency roadside assistance membership. For complete info, see your Fleetwood RV dealer.

**For complete info, see your Fleetwood RV dealer.

FLEETWOOD RV



Visit FleetwoodRV.com or find Fleetwood RV Tablet apps in the App Store or Google Play.

RV OWNERCARE**

Limited one-year/15,000-mile coach warranty and three-year/45,000-mile structural warranty, whichever occurs first, and it is fully transferable for the first 12 months. RV OWNERCARE is one of the RV industry's most comprehensive programs and includes systems, appliances, components and construction, with no deductible and no service charge. RV OWNERCARE coverage is provided by a company that will be around in the future to service your needs. See your nearest Fleetwood RV dealer for a full explanation of benefits and restrictions.

CONTACT US

To locate a dealer near you, visit our website at www.fleetwoodrv.com or call 1-800-322-8216. We can also be contacted at Fleetwood RV Customer Relations, P.O. Box 1007, Decatur, IN 46733.

FLEETWOOD MOTORHOME ASSOCIATION

As a Fleetwood RV owner, you're invited to become a member of the Fleetwood Motor Home Association (FMA). Becoming a member is the perfect way to meet other Fleetwood owners who love to travel across American and share in the RV lifestyle. Visit the FMA website at www.fma4fun.org to learn more and join the fun.



FLEETWOOD RV IS AN ALLIED SPECIALTY VEHICLE COMPANY.

LA MESA RV

EXPERIENCE LIFE

www.lamesarv.com
800-496-8778