

EXPEDITION®

EXPEDITION®



2015

CLASS A DIESEL



Surround yourself in the comforts of Expedition



In a hectic world, isn't it good to know an island of solace yet remains? Let Expedition lead you down the road of relaxation with its thoughtful amenities, comfortable interior and all-around beauty.

**Expedition Top Features**

- 360HP Cummins® ISB 6.7L Engine
- Sony® A/V Electronics
- Sony® LED TVs
- 8.0 kW Onan® Quiet Diesel Generator
- Quick Recovery Water Heater w/Direct Spark Ignition (Gas/Electric)
- Double-Roller Shades
- 84" Interior Ceiling Height
- Solid Surface Countertops
- Crown Molding
- Large Porcelain Hand-Laid Tile
- Molded Fiberglass Roof
- Chrome Mirrors w/Side View Cameras
- 22.5" Aluminum Wheels
- 10,000 lb. Hitch Rating
- Frameless Flush Mount Windows

EXPEDITION 38K SHOWN IN TUSCANY SUN DÉCOR WITH CINNABAR WOOD CABINERY

Go to [FleetwoodRV.com](http://FleetwoodRV.com) and build your own Expedition!



Shadow Cove



Tuscany Sun



Wisp of Willow

Both inside and out, there is a wide selection of colors, styles and finishes. From the moment you lay your eyes on an Expedition, the high-style graphics and décor collection welcome you with gracious beauty and contemporary design. We've paid attention to every detail. So wherever you are, you'll feel right at home.

## SHADOW COVE

SOFA	ACCENT	BEDSPREAD	COUNTERTOP	FLOORING	CARPET

## TUSCANY SUN

SOFA	ACCENT	BEDSPREAD	COUNTERTOP	FLOORING	CARPET

## WISP OF WILLOW

SOFA	ACCENT	BEDSPREAD	COUNTERTOP	FLOORING	CARPET

## CABINETRY



## INTERIOR THROUGHOUT

- 20,000/25,000 BTU Dual Furnaces (38B)
- 25,000/34,000 BTU Dual Furnaces (38S, 38K)
- 20,000/30,000 BTU Dual Furnaces (40X)
- 84" Interior Ceiling Height
- Complete PEX Plumbing System
- Crown Molding
- Manual Double Roller Shades
- Deluxe Roller Bearing, Full-Extension Drawer Guides & Transit-Ship Locks
- Solid-Surface Entry-Step w/ LED Accent Lights
- Demand Water Pump w/Filter
- Dual Roof A/C High-Efficiency w/Solar Panel, Chill Grills & Bedroom Heat Pump
- Fan-Tastic® Power Roof Vent w/ Wall Switch
- Hardwood Cabinet Doors/

### Optional

- CSA Package (Canadian Specs)\*\*
- Central Vacuum System
- Stackable Washer & Dryer
- Winegard® Stationary DSS System
- Satellite Radio (Subscription Required)
- Drawers
- Wall Sconces
- Wall Switches (Includes Switches for Ceiling Lights & Vents)
- Water Heater Bypass
- Whole Coach Water Filtration System
- Wood Finish Return Air Intake for Furnace
- Water Heater 16-Gallon Output

## DRIVER CONVENIENCE

- Adjustable 3-Point Seatbelts at Driver & Front Passenger Seats (w/Adjustable Shoulder Straps)
- Dual Monitors
- Auxiliary Start Circuit
- Battery Disconnect System
- Cruise Control
- Driver/Front Passenger Soft-Touch Captain's Chairs w/ Reclining Back/Slide Controls w/ Power Driver Seat
- Denso® High-Output Auto A/C Heater Combo
- Passenger Armrest
- Easy-Access Battery Disconnect Switch
- Front Power Roller Shades/Blinds
- Manual Driver/Passenger Roller Shades/Blinds
- Radio Switch
- Main/Auxiliary Power
- Tilt/Telescoping Steering Wheel
- 110V Power Outlet at Dash
- (2) 12V Power Outlets at Dash
- Power Passenger Seat w/Power Footrest
- Color Back-Up Monitor w/Side Cameras Integrated in Mirrors
- Touch Screen Radio w/Built-in GPS

## GALLEY

- GE 1 cu.ft. Convection Stainless Steel Microwave Oven w/Built-in Range Hood & Lights
- 3-Burner, High-Output Cooktop w/Sealed Burners
- Adjustable Cabinet Shelves (Select Cabinets)
- Fan-Tastic® Power Roof Vent w/ Wall Switch
- Dometic® 12.2 cu.ft. 4-Door Refrigerator w/Icemaker & Water Dispenser
- Single-Handle Galley Faucet w/ Pullout Sprayer
- Dinette Base Cabinet with Freestanding Chairs
- Solid-Surface Countertop w/Sink & Range Covers
- Solid-Surface Backsplash w/ Mosaic Glass Tiles
- Under-Galley Shelving & Wastebasket
- Window Over Sink
- Solid-Surface Dinette Table

### Optional

- 19 cu. ft. Residential Refrigerator w/Two Additional Batteries & 2800 watt Inverter
- 3-Burner, High-Output Cooktop w/Sealed Burners & Oven

## LIVING ROOM

- Sony® 40" LED HDTV (38B, 38K)
- Sony 48" LED HDTV (38S, 40X)
- Sony 5.1 Home Theater System w/Built-in AM/FM/DVD & Surround Sound Speakers
- Custom Fit (by Villa™) Residential Seat Styling
- TV Antenna
- Wall-to-Wall Porcelain Flooring

### Optional

- Sony® 32" LED HDTV in Front Overhead
- L-Shaped Sofa w/Incliners (38S)
- Expandable L-Sofa (40X)
- U-Shaped Dinette/Sofa (38B, 38K, 40X)
- Facing Dinette (38B, 40X)
- Dual Wardrobe (38B)
- Desk (38B)
- Electric Fireplace (38K)

## BEDROOM

- King Dream Easy Memory Foam Mattress (38S, 38K, 40X)
- Queen Dream Easy Memory Foam Mattress (38B)
- Bedspread w/Décor Pillows
- Sony® 32" LED HDTV
- Overhead Cabinets
- Remote Generator Start Switch
- Wardrobe w/Cedar Lining, Carpeted Floor
- Wardrobe Lighting
- Plush Wall-to-Wall Carpet w/Carpet Pad in Bedroom (38B, 40X)

### Optional

- Queen Air Mattress (38B)
- King Air Mattress (38S, 38K, 40X)

## BATHROOM

- A/C Venting
- Cabinet Toe Kicks
- Fan-Tastic® Power Roof Vent w/ Wall Switch
- Glass Shower w/Skylight and Low Threshold
- Single-Handle Faucet
- Hardwood Bath Door/Trims
- Porcelain Vacuum Flush Toilet (38S, 38K)
- Porcelain Toilet w/Water Saver
- Halogen Lighting Over Sink
- Decorative Backsplash

## SAFETY/CONVENIENCE (INTERIOR)

- Carbon Monoxide Detector/Alarm
- Fire Extinguisher
- Multiple Seatbelt Locations
- Propane Detector/Alarm
- Smoke Detector/Alarm
- Neutral Loss Protection

## EXTERIOR THROUGHOUT

- 120V/12V AC/DC Converter
- 2,000-Watt Pure Sine Wave Inverter w/Remote
- 4-Point Automatic Levelers
- 50-Amp Service
- 8.0 kW Onan® Quiet Diesel Generator
- Awning Rail/Drip Molding (Both Sides)
- Molded Fiberglass Roof
- Doorside Patio Receptacle
- DSS Pre-wire
- Dual-Pane Windows w/Screens
- Fiberglass Wheel-Well Trims
- Full-Body Paint
- Weather Pro Power Awnings (Patio Awning Includes Wind Sensor)
- Fiberglass Front/Rear Caps w/High-Mounted Taillights
- Water Pump Switch (Multiple Locations)

### Optional

- Heat Pump in Bedroom A/C
- Power Cord Reel
- Frameless Flush Mount Windows
- Exterior Entertainment Center w/Sony® 32" LED HDTV & High Output, Splashproof AM/FM/DVD Sound System
- Remote Keyless Entry
- Window Awning Package
- Rear Rockguard
- Protective Front Mask
- 1st Full Bay 90" Slide Tray
- 1st Full Bay 36"/54" Slide Trays
- 2nd Full Bay 54" Slide Trays (38B, 38K)
- DSS Stationary Satellite Dish
- Rear Ladder

## AUTOMOTIVE

- Aluminum Wheels
- Fog Lamps
- Mud Flaps
- Color Rear & Side-Vision Camera System
- Single-Motor Windshield Wipers w/Wet Arm
- Underhood Utility Light
- Large One-Piece Bonded-in Windshield
- Remote/Heated Rear-View Chrome Mirrors w/Turn Signals & Side-View Cameras

## SAFETY/CONVENIENCE (EXTERIOR)

- 20' Sewer Hose
- 4-Wheel ABS Brakes
- Automotive Safety Glass
- Automatic Generator Start System
- Daytime Running Lights
- Easy-Sweep Flooring at Entry Step
- Entry Door w/Screen Door & Deadbolt Lock
- Four 6V/Deep-Cycle House Batteries
- Lighted Entry Assist Handle
- Power Entry Step
- Toilet Tank San-T-Flush™ System
- Touch Sensor Tank Monitoring System
- Utility Compartment w/Exterior Shower
- Rear Side Marker Lights

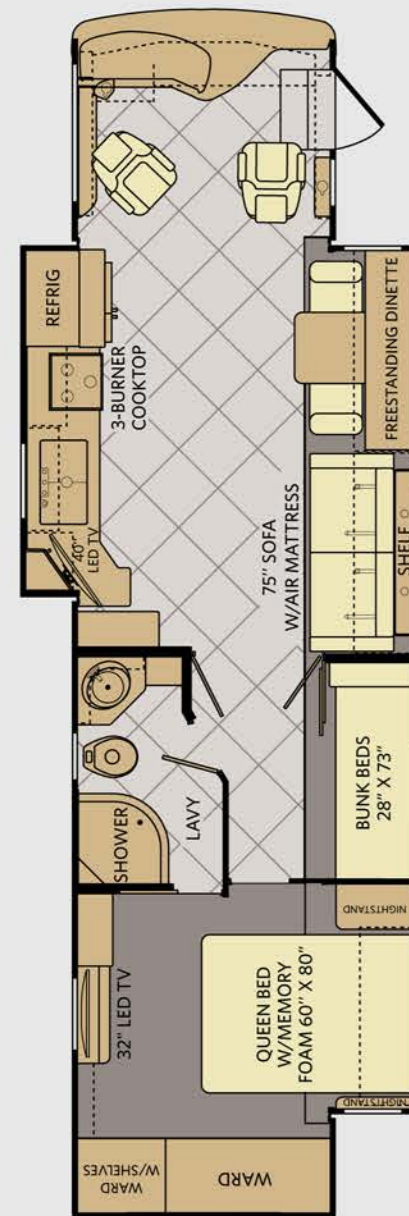
## STORAGE

- Continuous One-Piece Compartment Bulb Seal
- Pass-Through Storage
- Side Swinging Luggage Doors
- Large Compartment Doors
- Insulated Aluminum Luggage Doors w/Single-Paddle Metal Latches & Corrosion-Resistant Steel Hinges
- Lighted Luggage Compartments

## BODY STRUCTURE

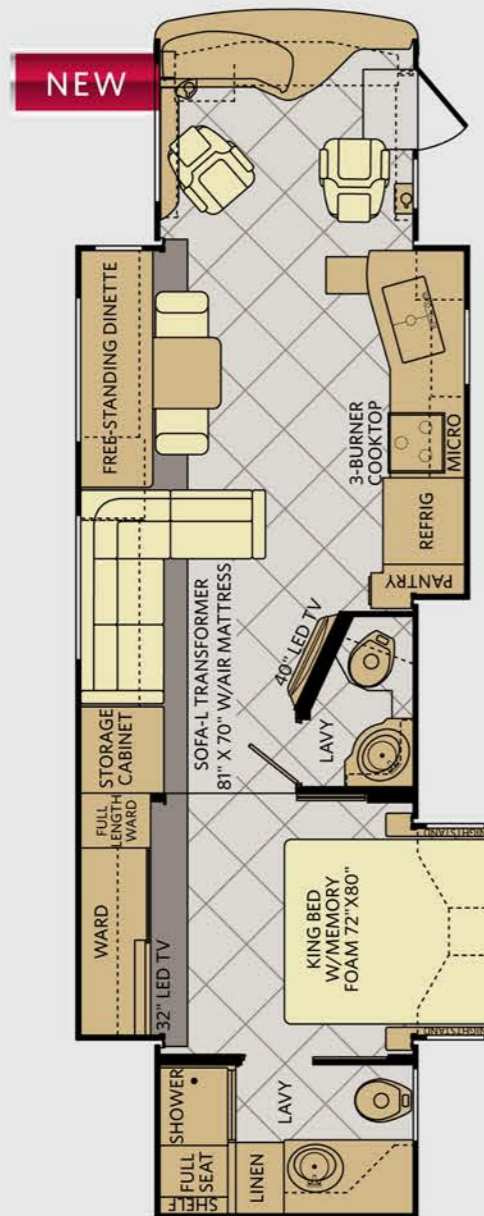
- Aluminum Interlocking Floor/Wall/Ceiling Framing
- Molded Fiberglass Roof
- Heated Water & Holding Tank Compartments
- Quiet Cool Ducted A/C
- Vacu-Bond® Upper/Lower Floors, Walls & Ceilings
- Power Bridge® Chassis Construction

\*Not all options are available on all floor plans. See your Fleetwood dealer for details.  
\*\*CSA standards may require substitution or deletion to achieve conformance.



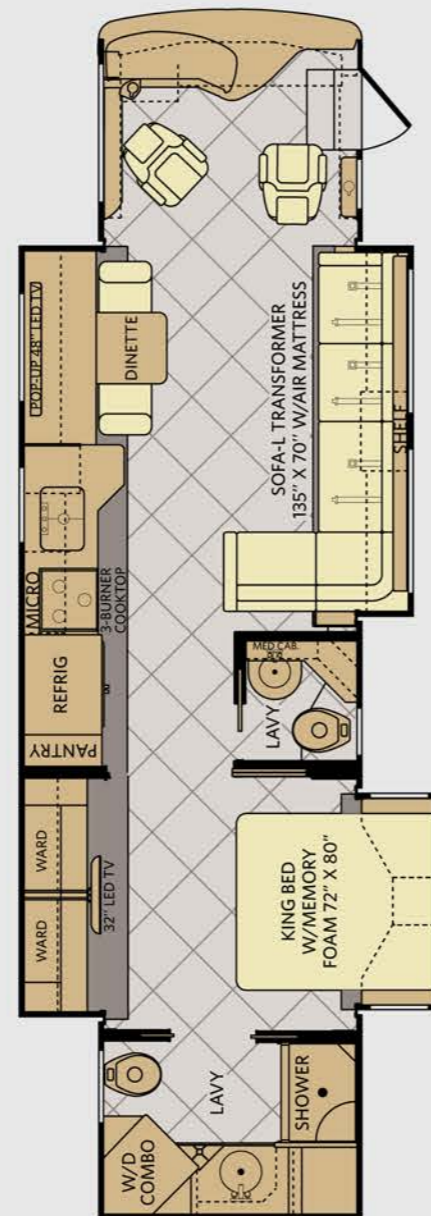
**38B**

Available options: 087, 093, 113, 131, 144, 635, 830, 855, 878, 883,



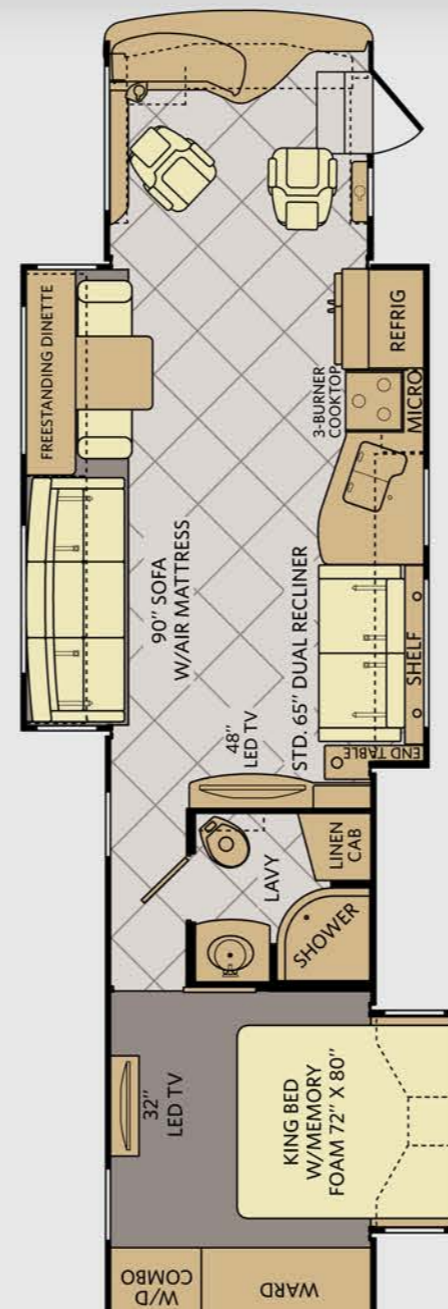
**38K**

Available options: 087, 093, 113, 131, 139, 144, 635, 856



**38S**

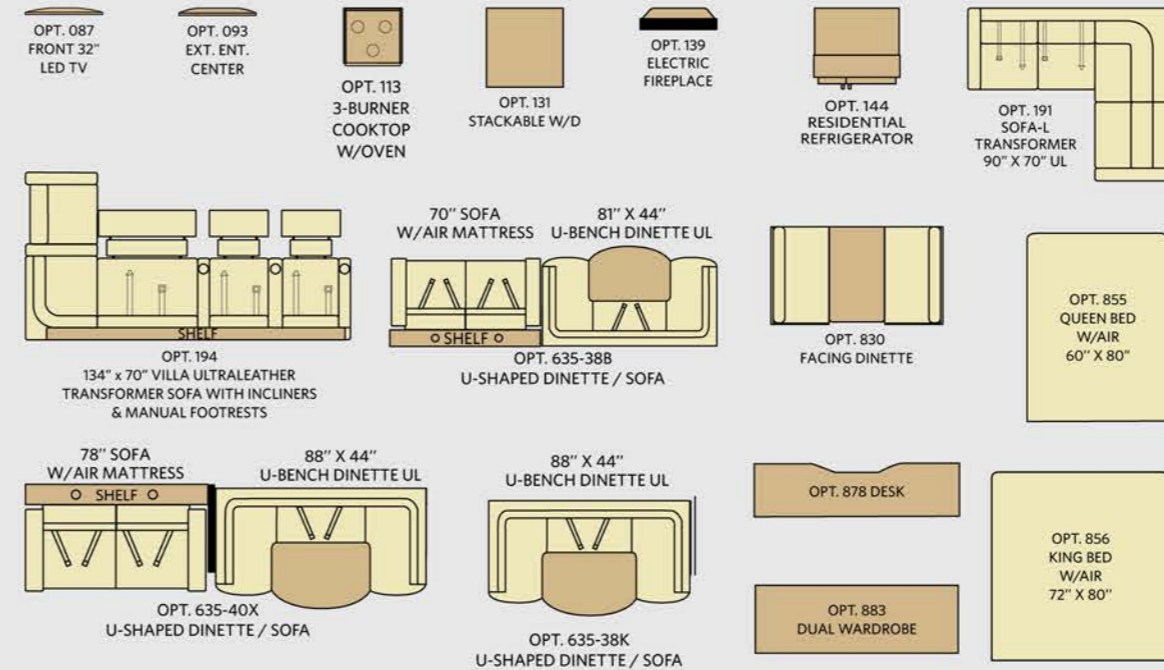
Available options: 087, 093, 113, 131, 144, 194, 635, 856



**40X**

Available options: 087, 093, 113, 131, 144, 191, 635, 830, 856,

## FLOOR PLAN OPTIONS



- Addendums
- GVWR (Gross Vehicle Weight Rating) is the maximum permissible weight of this fully loaded motorhome. The GVWR is equal to or greater than the sum of the (UVW) unloaded vehicle weight plus the (OCC) occupant cargo-carrying capacity\*.
  - GAWR (Gross Axle Weight Rating) is the maximum permissible loaded weight a specific axle is designed to carry.
  - GCWR (Gross Combined Weight Rating) is the value specified by the motorhome manufacturer as the maximum allowable loaded weight of this motorhome with its towed vehicle. Towing and braking capacities may be different. Refer to Fleetwood and chassis manufacturer's manuals for complete information.
  - Length measured from front bumper to rear bumper (excludes accessories).
  - Excludes safety equipment and awnings.
  - Motorhomes feature a body width over 96" which will restrict your access to certain roads. Before purchasing, you should research any state and/or province road laws which may affect your usage.
  - Tank manufacturer's listed water capacity (WC). Actual propane capacity is 80% of water listing as required by the safety code.
- \* The chassis manufacturer recommends the installation of a supplemental brake control system to activate the brakes on the vehicle or trailer you are towing. Hitch receiver ratings expressed are maximum for the hitch receiver installed and may require the purchase of additional equipment that is dependent on the weight of the towed load. Consult with hitch receiver manufacturer for further information.
- \* UVW and OCC are found on the label containing the federal certification tag in each RV.

CHASSIS	POWER BRIDGE®			
MODELS	38B	38K	38S	40X
Wheelbase (inches)	252"	252"	252"	276"
GVWR (lbs) <sup>1</sup>	32,400	32,400	32,400	32,400
Front GAWR (lbs) <sup>2</sup>	12,400	12,400	12,400	12,400
Rear GAWR (lbs) <sup>2</sup>	20,000	20,000	20,000	20,000
GCWR (lbs) <sup>3</sup>	42,400	42,400	42,400	42,400
Hitch Rating Weight (lbs) <sup>1</sup>	10,000	10,000	10,000	10,000
Tongue Weight (lbs) <sup>1</sup>	1,000	1,000	1,000	1,000
Fuel Capacity (gal)	100	100	100	100

## POWER BRIDGE® CHASSIS

Model: Freightliner® XCM Series  
 Engine: Cummins® ISB 6.7L  
 Transmission: Allison® 3000 MH 6-Speed w/Electronic Shifter

Alternator: Delco Remy 160 Amp  
 Torque: 800 lb-ft @ 1,800 RPM  
 Horsepower: 360HP

## DIMENSIONS & CAPACITIES

MODELS	38B	38K	38S	40X
Overall Length (inches) <sup>4</sup>	38' 7.5"	38' 7.5"	38' 7.5"	41' 7."
Overall Height (suspension inflated)	12' 10"	12' 10"	12' 10"	12' 10"
Overall Width (maximum) <sup>5,6</sup>	102"	102"	102"	102"
Interior Height (maximum)	84"	84"	84"	84"
Interior Width (maximum)	96"	96"	96"	96"
Interior Storage (cu. ft.)	217	138	138	197
Exterior Storage (cu. ft.)	181	224	112	208
Fresh Water Holding Tank (gal)	105	105	105	105
Grey Water Holding Tank (gal)	75	75	75	75
Black Water Holding Tank (gal)	50	50	50	50
Appliance Propane Tank (gal) (WC) <sup>7</sup>	38.7	38.7	38.7	38.7
Water Heater Tank (gal)	10	10	10	10



## WHY FLEETWOOD?



### Quality

There's no cutting corners. Skilled craftsmen build every Fleetwood RV for maximum durability and longevity.



### Trust

More people trust Fleetwood RV. After all, we've spent over 60 years perfecting RVs, earning the loyalty of generations of RVers.



### Passion

We're truly passionate about the RV lifestyle. Fleetwood RV was founded by RV enthusiasts, and that tradition continues today.



### Safety

You've got precious cargo. So we've engineered dozens of innovative safety features into our motor homes to give you more peace of mind.



### Service

Help is nearby with 24/7 emergency roadside assistance through **Coach-Net.**™ And when you need an upgrade or repair, you'll find Fleetwood RV dealers all across North America ready to assist you.



### Warranty

Exclusive RV ownercare warranty.  
See your Fleetwood RV dealer for details.

\*\*All 2015 Fleetwood RV motorhomes include a 1-year emergency roadside assistance membership. For complete info, see your Fleetwood RV dealer.

**FLEETWOOD RV**

ALLIED RECREATION GROUP



Visit [FleetwoodRV.com](http://FleetwoodRV.com).



### RV OWNERCARE\*\*

Limited one-year/15,000-mile coach warranty and three-year/45,000-mile structural warranty, whichever occurs first, and it is fully transferable for the first 12 months. RV OWNERCARE is one of the RV industry's most comprehensive programs and includes systems, appliances, components and construction, with no deductible and no service charge. RV OWNERCARE coverage is provided by a company that will be around in the future to service your needs. See your nearest Fleetwood RV dealer for a full explanation of benefits and restrictions.

### CONTACT US

To locate a dealer near you, visit our website at [www.fleetwoodrv.com](http://www.fleetwoodrv.com) or call 1-800-322-8216. We can also be contacted at Fleetwood RV Customer Relations, P.O. Box 1007, Decatur, IN 46733.

### FLEETWOOD RV MOTOR HOME CLUBS

As a Fleetwood RV owner, you're invited to become a member of several Fleetwood RV motor home clubs. Becoming a club member is the perfect way to meet other Fleetwood owners who love to travel across America and share in the RV lifestyle. Visit our website at [www.fleetwoodrv.com/owners\\_clubs](http://www.fleetwoodrv.com/owners_clubs) to learn more and join the fun.

**IMPORTANT—PLEASE READ:** Product information, photography and illustrations included in this publication were as accurate as possible at the time of printing. For further product information and changes, please visit our website at [www.fleetwoodrv.com](http://www.fleetwoodrv.com) or contact your local Fleetwood RV dealer. Prices, materials, design and specifications are subject to change without notice. All weights, fuel, liquid capacities and dimensions are approximate. Fleetwood RV has designed its recreational vehicles to provide a variety of uses for customers. Each vehicle features optimal seating, sleeping, storage and fluid capacities. The user is responsible for selecting the proper combination of loads (i.e., occupants, equipment, fluids, cargo, etc.) to ensure that the vehicle's capacities are not exceeded.

YOUR LOCAL FLEETWOOD RV DEALER IS:

