

2016

CLASS A GAS



SPECIAL ANNIVERSARY FEATURES

- Enhanced Interior Styling
 - New Furniture Styling
 - New Window Treatments
 - Solid Surface Tops & Backsplash in Bathroom(s)
 - Larger Stylish Headboard Design
 - New 12" x 24" Composite Tile Floor Throughout (Including Bedroom)
 - Galley Cabinetry w/Decorative Toe Kick Accents
 - Etched Glass Added to Overhead Doors (Select Locations)
- Driver/Passenger Cockpit Floor Mat & Engine Cover Tray
- Driver/Passenger Side Table Console/Magazine Rack w/Solid Surface Top & Cupholders
- Enclosed Interior Control Center
- Multi-Colored Textured Carpet
- Ozite-Lined Cabinet Interiors
- Power Driver Seat
- Glass & Stainless Steel Galley Tile Backsplash
- Recessed Cooktop w/Solid Surface Covers
- Oversized Window(s) in Galley and Living Room
- Bedroom Slide-Out w/Side Windows
- 120V/USB Port in Bedroom
- Stainless Steel Microwave/Convection Oven
- 3 New Decors

OPTIONAL 30TH ANNIVERSARY FEATURES

- Driver/Passenger Center Table
- King Bed Memory Foam Mattress (35K, 33C, 36H)
- King Bed (35K)
- Queen Bed Memory Foam Mattress
- Redesigned P2K For Comfort, Function, & Finish w/Front Overhead TV



BOUNDER 35K SHOWN IN ECLECTIC BRONZE DECOR WITH BUTTERNUT CHERRY CABINERY



SIDE TABLE CONSOLE/MAGAZINE RACK



DRIVER/PASSENGER CAPTAIN'S CHAIRS W/DIAMOND PATTERN LUMBAR, CONTRASTING BASEBALL STITCH, AND COMFORTABLE FOAM DESIGN



STAINLESS STEEL WHIRLPOOL® MICROWAVE



OVERSIZED GALLEY WINDOW, CABINERY W/TOE KICK ACCENTS AND RECESSED COOKTOP W/SOLID SURFACE COVERS

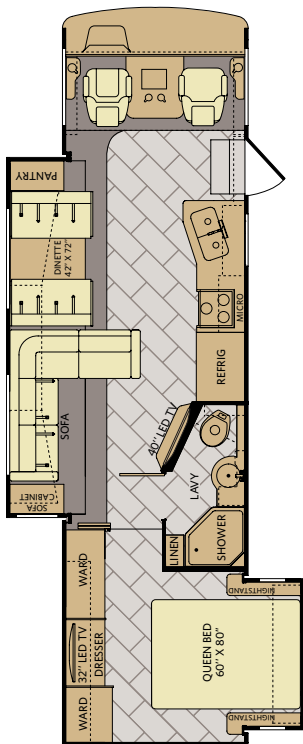


12" X 24" COMPOSITE TILE FLOOR

INTERIOR DÉCORS

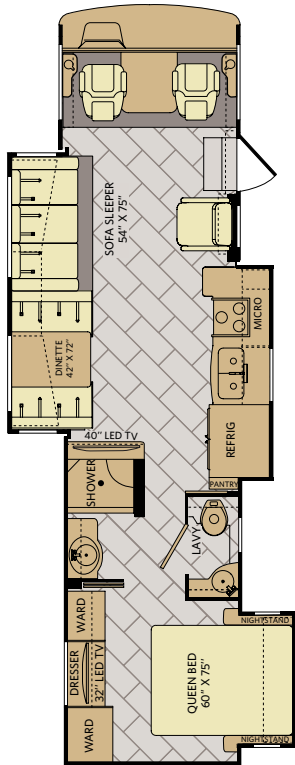
ECLECTIC BRONZE						CABINERY
SOFA	ACCENT	BEDSPREAD	COUNTERTOP	FLOORING	CARPET	
MESA GRANITE						BUTTERNUT
SOFA	ACCENT	BEDSPREAD	COUNTERTOP	FLOORING	CARPET	
REDWOOD						
SOFA	ACCENT	BEDSPREAD	COUNTERTOP	FLOORING	CARPET	

33C



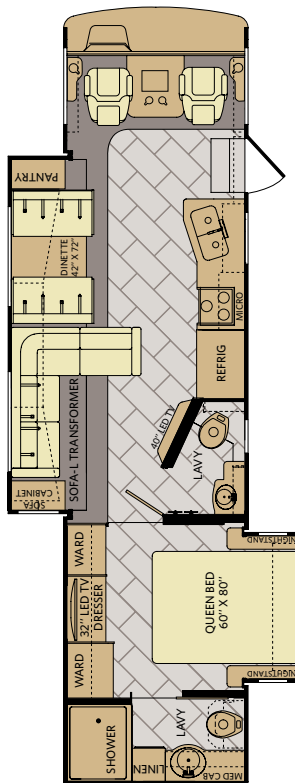
AVAILABLE OPTIONS: 087, 093, 113, 126, 139, 144, 186, 220, 830, 833, 852, 853, 854

34T



AVAILABLE OPTIONS: 087, 093, 113, 126, 139, 144, 186, 220, 830, 833, 853

35K



AVAILABLE OPTIONS: 087, 093, 113, 126, 139, 144, 186, 220, 830, 833, 852, 853, 854

OPTIONS



OPT. 087
FRONT 32"
LED TV



OPT. 093
EXTERIOR
ENTERTAINMENT
CENTER



OPT. 113
3-BURNER
COOKTOP
W/OVEN



OPT. 126
WASHER
/ DRYER



OPT. 139
ELECTRIC FIREPLACE



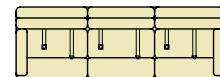
OPT. 144
RESIDENTIAL REFRIG



OPT. 157
DUAL
PANEL TV'S

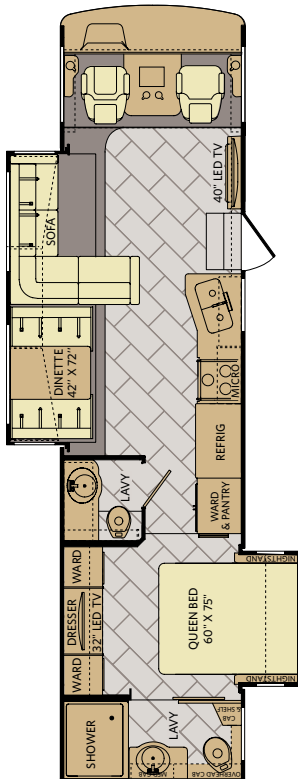


OPT. 186
DRIVER/PASSENGER
PEDESTAL TABLE



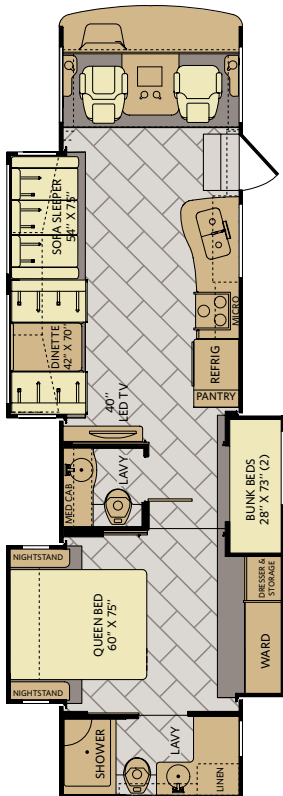
OPT. 192
SOFA SLEEPER
W/AIR MATTRESS
& FOOTREST

36E

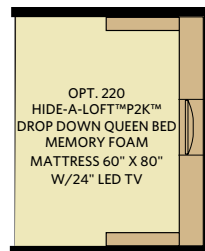


AVAILABLE OPTIONS: 093, 113, 126, 139, 144, 186, 192, 220, 830, 853

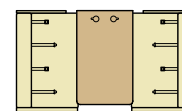
36H



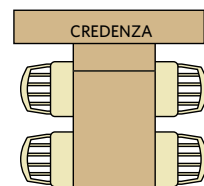
AVAILABLE OPTIONS: 087, 093, 113, 126, 139, 144, 157, 186, 220, 830, 833, 852, 853, 854



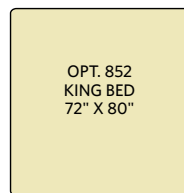
OPT. 220
HIDE-A-LOFT™ P2K™
DROP DOWN QUEEN BED
MEMORY FOAM
MATTRESS 60" X 80"
W/24" LED TV



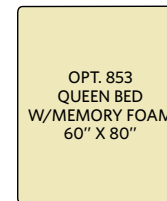
OPT. 830
FACING DINETTE



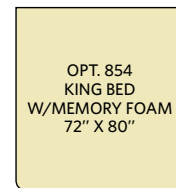
OPT. 833
FREE-STANDING DINETTE
WITH CRENZANA



OPT. 852
KING BED
72" X 80"



OPT. 853
QUEEN BED
W/MEMORY FOAM
60" X 80"



OPT. 854
KING BED
W/MEMORY FOAM
72" X 80"

LX PACKAGE

- Onan® 7.0kW Generator
- 15,000 Btu/h w/Heat Pump Front A/C
- Exterior Chrome Package (Luggage Compartment Handles & Mirrors w/Side View Cameras)
- Power Cord Reel
- Doorside & Front Undercarriage Lighting

CHASSIS

MODELS	33C	34T	35K	36E	36H
Wheelbase (inches)	208"	228"	228"	228"	242"
GVWR (lbs) ¹	22,000	22,000	22,000	22,000	22,000
Front GAWR (lbs) ²	8,000	8,000	8,000	8,000	8,000
Rear GAWR (lbs) ²	15,000	15,000	15,000	15,000	15,000
GCWR (lbs) ³	26,000	26,000	26,000	26,000	26,000
Hitch Rating Weight (lbs) [†]	5,000	5,000	5,000	5,000	5,000
Tongue Weight (lbs) [*]	500	500	500	500	500
Fuel Capacity (gal)	80	80	80	80	80

DIMENSIONS & CAPACITIES

MODELS	33C	34T	35K	36E	36H
Overall Length (inches) ⁴	34' 3"	35' 5"	36' 3"	36' 3"	37' 7"
Overall Height (with A/C)	12' 10"	12' 10"	12' 10"	12' 10"	12' 10"
Overall Width (maximum) ^{5, 6}	102"	102"	102"	102"	102"
Interior Height (maximum)	84"	84"	84"	84"	84"
Interior Width (maximum)	96"	96"	96"	96"	96"
Patio Awning Width	17'	17'	17'	17'	17'
Interior Storage (cu. ft.)	123	123	126	146	134
Exterior Storage (cu. ft.)	160	165	180	170	190
Fresh Water Holding Tank (gal)	100	100	100	100	100
Grey Water Holding Tank (gal)	58	58	58	58	58
Black Water Holding Tank (gal)	42	42	42	42	42
Appliance Propane Tank (gal) (WC) ⁷	25	25	25	25	25
Water Heater Tank (gal)	10	10	10	10	10

POWER PLATFORM® CHASSIS

Model: Ford®
Engine: 6.8L Triton V10
Transmission: Ford®, 5-Speed, Automatic w/Overdrive

Alternator: 175 Amp
Torque: 457 lb-ft @ 3,250 RPM
Horsepower: 362HP



AUTUMN BREEZE



CAMEL KISS



CHOCOLATE MALT



GLISTERING SLATE



WINTER HAVEN


 Visit FleetwoodRV.com

LA MESA RV
 EXPERIENCE LIFE
www.lamesarv.com
 800-496-8778

2016
 CLASS A GAS


Addendums

- GVWR (Gross Vehicle Weight Rating) is the maximum permissible weight of this fully loaded motorhome. The GVWR is equal to or greater than the sum of the (UVW) unloaded vehicle weight plus the (OCCC) occupant cargo-carrying capacity*.
- GAWR (Gross Axle Weight Rating) is the maximum permissible loaded weight a specific axle is designed to carry.
- GCWR (Gross Combined Weight Rating) is the value specified by the motorhome manufacturer as the maximum allowable loaded weight of this motorhome with its towed vehicle. Towing and braking capacities may be different. Refer to Fleetwood and chassis manufacturer's manuals for complete information.
- Length measured from front bumper to rear bumper (excludes accessories).
- Excludes safety equipment and awnings.
- Motorhomes feature a body width over 96" which will restrict your access to certain roads. Before purchasing, you should research any state and/or province road laws which may affect your usage.
- Tank manufacturer's listed water capacity (WC). Actual propane capacity is 80% of water listing as required by the safety code.

† The chassis manufacturer recommends the installation of a supplemental brake control system to activate the brakes on the vehicle or trailer you are towing. Hitch receiver ratings expressed are maximum for the hitch receiver installed and may require the purchase of additional equipment that is dependent on the weight of the towed load. Consult with hitch receiver manufacturer for further information.

* UVW and OCCC are found on the label containing the federal certification tag in each RV.

†† The Minimum Towable Load of this vehicle is the available weight capacity, up to GCWR, when the coach is fully loaded to maximum GVWR. However, if the coach is loaded to something less than maximum GVWR, that extra available weight capacity can be added to your Towable Load. For example, if your coach is loaded to 1000lbs less than maximum GVWR, your Towable Load increases accordingly. Do not exceed the hitch rating weight, GVWR or GCWR.

IMPORTANT—PLEASE READ

Product information, photography and illustrations included in this publication were as accurate as possible at the time of printing. For further product information and changes, please visit our website at www.fleetwoodrv.com or contact your local Fleetwood RV dealer. Prices, materials, design and specifications are subject to change without notice. All weights, fuel, liquid capacities and dimensions are approximate. Fleetwood RV has designed its recreational vehicles to provide a variety of uses for customers. Each vehicle features optimal seating, sleeping, storage and fluid capacities. The user is responsible for selecting the proper combination of loads (i.e., occupants, equipment, fluids, cargo, etc.) to ensure that the vehicle's capacities are not exceeded.

CONTACT US

To locate a dealer near you, visit our website at www.fleetwoodrv.com or call 1-800-322-8216. We can also be contacted at Fleetwood RV Customer Relations, P.O. Box 1007, Decatur, IN 46733.

** All 2016 Fleetwood RV motorhomes include a 1-year emergency roadside assistance membership. For complete info, see your Fleetwood RV dealer.

©2015 Allied Recreation Group Inc. Printed in USA.
 Inventory Control Number BNDR30TH_16F1, 08/15. Model Year 2016, First Edition.

ALLIED RECREATION GROUP

