

# MERIDIAN

**WINNEBAGO**



## WHY MERIDIAN?

Revolutionary Maxum Chassis®  
New front and rear styling  
with full-body paint

Infotainment Center with  
Rand McNally RV GPS  
MCD solar/blackout  
roller shades

Expansive exterior storage  
Premier clearcoat  
automotive finish

Multi-plex wiring  
system (NA 36M)  
TrueAir® Maximum Comfort  
air conditioning

Larger, frameless, dual-pane  
Contour™ windows to enhance  
natural light



On the Cover: 42E Firethorn Full-Body Paint

42E Waldorf with Coffee-Glazed Vienna Maple Cabinetry

## You *Can* Take It with You

There are many imitators, but there is only one Maxum Chassis® Built exclusively for Winnebago®, the lowered-rail design delivers unmatched ride and handling with up to 229 cubic-feet of storage. While a chassis may not wow your friends at the campsite, the new exterior styling and full-body paint schemes sure will. The unique Meridian® floorplans appeal to a

wide range of tastes. All models come with Contour™ frameless dual-pane coach windows for an open feel you have to see to believe. There's never been a better time to travel in diesel-pusher style. Accept nothing less than the performance, storage, and lifestyle afforded by the Meridian.



### Recognized Quality

The Recreation Vehicle Dealer Association annually rates RV manufacturers and awards the Quality Circle Award to manufacturers that provide exceptional products, service and support. Winnebago Industries is proud to be the only manufacturer that has received this award every year since its inception.



42E Waldorf with Coffee-Glazed Vienna Maple Cabinetry

The Meridian lifestyle is built around the comfort and class of a lounge featuring Ultraleather furniture, a fully loaded entertainment center with a big-screen HDTV, and generous cabinet storage with updated styling. Large Contour frameless windows create an open, inviting atmosphere while MCD solar/blackout roller shades let you effortlessly control the light and privacy levels. Stay comfortable all summer long using the TrueAir® maximum comfort air conditioning that delivers even cooling throughout the coach. Now that's a lifestyle worth celebrating.



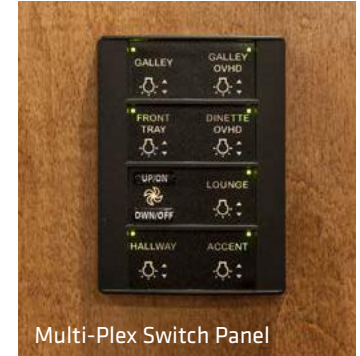
MCD Solar/Blackout Roller Shades



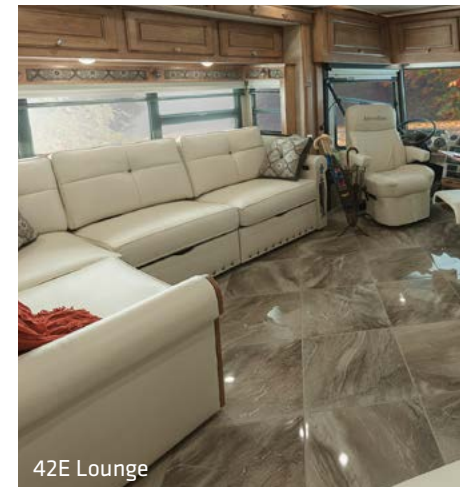
Euro Recliner and Fireplace



OnePlace Systems Center



Multi-Plex Switch Panel



42E Lounge



Rest Easy Extendable Sectional Sofa



Rest Easy Extendable Sectional Sofa as Bed



Glide & Dine as Desk

The Glide & Dine dining table is built on a hidden track, so the tabletop can slide along the buffet to accommodate a variety of activities. Slide it to the far end for maximum workspace, or keep it in the middle so diners can sit on both sides.



Glide & Dine Table and Chairs



Glide & Dine Table and Chairs



Glide & Dine Table and Chairs

From L-shaped galleys to U-shaped galleys to a unique front galley in the 40R, the three Meridian floorplans put their own spin on the kitchen. In each layout you'll find a microwave/convection oven, gorgeous Corian® solid-surface countertops, and a stunning residential stainless steel French door refrigerator with ice maker and water dispenser.



 42E Galley



42E Corian Sink Covers



42E Sink



Full-Extension Drawers



42E Residential Stainless Steel French Door Refrigerator/Freezer



42E 2-Burner Induction Range Top



Microwave/Convection Oven with Vented Range Fan



42E Bedroom

A great day starts with a great night's sleep. The Meridian has you covered with a variety of bed options, including the powered queen bed with Ideal Rest® *Natural Reserve*® digital comfort control mattress—standard in most models. Stay cool all night under the standard ceiling fan or add a fireplace in the 36M to stay cozy while you watch a movie on the bedroom HDTV.



42E Wardrobe



Bedroom Shirt Closet



Bedroom Storage Behind TV





42E Master Bath Vanity



42E Master Shower



42E Guest Bath



42E Available Washer/Dryer



42E Guest Bath Vanity



W

Dash

Six-way power pedestals on the driver and passenger seats provide maximum enjoyment of the smooth Maxum Chassis performance. Get turn-by-turn directions, monitor the rearview cameras, and adjust the stereo with touchscreen control on the Rand McNally RV GPS infotainment center. It even offers a second screen to let the passenger take control of the tunes.



Versa Driver Cab Seat with Passenger + Lounger Upgrade



Infotainment Center



+Lounger Passenger Cab Seat with Flip-Up Workstation



Power Mirror Defrost, with Turn Signal Indicator and Sideview Camera

# MERIDIAN Exterior

**WINNEBAGO**

The proprietary construction of the Maxum Chassis delivers cavernous storage for bulky items such as chairs, grills, golf clubs, and more. You'll appreciate all that extra space when you select the available entertainment center with HDTV and the available portable refrigerator/freezer mounted on a roll-out tray. All-new, full-body paint will grab your attention, but hidden conveniences like the Powerline® Energy Management System and multi-plex wiring (NA 36M) are what truly make the Meridian a one-of-a-kind coach.



Powered Patio Awning with LED Lighting



Stylized Aluminum Wheels



Automatic Entrance Steps



LED Awning Lights



42E Exterior Service Center



42E Electrical Exterior Service Center



Slideout Storage Compartment Tray



Available Portable Refrigerator/Freezer



Available Exterior Entertainment Center



Available Exterior Entertainment Center with Soundbar

**Fiberglass Roof** The crowned, one-piece fiberglass roof is backed by a 10-year limited parts-and-labor roof skin warranty.

**Thermo-Panel® Sidewalls** By layering fiberglass and high-density block foam insulation with welded aluminum support structures, we create some of the industry's strongest, most durable and lightweight sidewalls.

**E-Coating** An electrodeposition coating helps protect critical steel components.

**Embedded Steel** Metal substructures embedded into the sidewall provide solid attachment points to keep cabinets and appliances mounted securely in place.

**Solid Framework** Aluminum extruded in our own facility to our exacting standards creates an extremely strong and solid structural framework.

**Laser-Cut Tubing** Precision laser cutters create precise joints in structural steel that are stronger and require less welding.



**Interlocking Joints** Specially engineered interlocking joints connect the floor, sidewalls and roof where competitors often rely on simple screws to bear the weight.

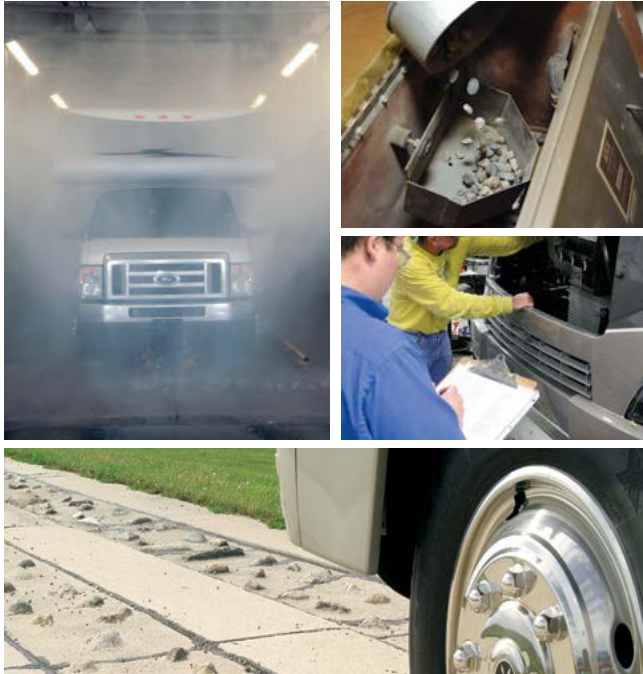


# SUPER STRUCTURE

BUILT TO LAST

Every coach—from our smallest Class C to our largest diesel-pusher model—is built to Winnebago's® legendary SuperStructure® construction standards. It's a process developed and refined over more than 50 years of building some of the strongest, most durable coaches in the industry.

**TESTING** Before rolling out of our factories, every coach undergoes an extensive 113-point inspection. Each coach also passes a high-pressure water test that simulates rain at a rate of 50-inches per hour to check for leaks. During the design process, our computer simulations, physical testing center, and rigorous test track ensure each model is built to last.



**DETAILS** At Winnebago, we treat the features you can't see with the same care as the ones you can. Look in the access panels of some of our competitors' coaches and you'll see loose insulation and wires haphazardly strewn about. Winnebago maintains a clean fit and finish throughout so your coach will last for the long haul.



**BUILT IN-HOUSE** We extrude our own aluminum. We rotocast our own plastic components. In fact, we manufacture most of our own parts so they are designed to fit the space, rather than fitting the space to an awkward off-the-shelf component size.



**SUPER  
STRUCTURE**  
BUILT TO LAST

**W** Visit [BetterBuiltRVs.com](http://BetterBuiltRVs.com) to gain real insight into what goes into a Winnebago motorhome.

**TAKE A TOUR** We're proud of our processes, state-of-the-art facilities, and the people who make Winnebago number one. We invite you to visit our complex in Forest City, Iowa, for a firsthand look at the dedication and technology behind every motorhome we build.

Call (641) 585-6936 or (800) 643-4892 or visit us online at [Winnebagolnd.com/company/visit](http://Winnebagolnd.com/company/visit) for more information.



3-point engine mounting reduces engine vibration.

Engine brake uses the engine to slow the coach, promoting longer brake life.

Allison® 3000 MH 6-speed automatic transmission includes a touchpad control for ease of use.

Rear axle incorporates proprietary gear machining for a smoother, quieter ride.

V-Ride rear air suspension provides superior ride and handling (NA 36M).

The lowered-rail design moves intrusive rails from storage areas, creating up to 229 cubic feet of storage.

## MAXUM CHASSIS

Extra space in critical areas allows for more pass-through storage.

Taller, 23.25" pass-through storage height accommodates bulky items compared to 19.5" similar raised-rail and 17" on a typical straight-rail.

55° wheel cut provides a tighter turning radius and better maneuvering.

Color-coded air lines make service easy.



10,000-pound trailer hitch<sup>6</sup> (36M)

15,000-pound trailer hitch<sup>6</sup> (40R, 42E)

"Clean Air Diesel" Cummins® engine delivers hill-climbing power when you need it most:

- Cummins ISB XT 6.7L 360-hp (36M)
- Cummins ISL 8.9L 400-hp (40R)
- Cummins ISL 8.9L 450-hp (42E)

Low frame rails create a lower center of gravity improving stability.

Winnebago's SuperStructure integrated with the lowered-rail design creates a chassis that is seven times stronger than typical raised-rail chassis designs.

Dual-fill fuel tank.

4-wheel ABS anti-lock air brakes provide fast stopping power.

Michelin® tires and polished aluminum wheels look sharp.

## A True Work of Art

You may not be able to see the Maxum Chassis® as you're driving through the Rockies or cruising the coast, but you'll know it's there. Its powerful Cummins® turbo-charged diesel engine and Allison® transmission go to work so you don't have to sweat the peaks and valleys ahead.

Through a strong partnership with Freightliner®, the undisputed leader in diesel

motorhome chassis, we set a new standard for handling, ride and performance in diesel chassis design.

But performance doesn't mean sacrificing storage. The innovative lowered-rail design of the Maxum Chassis opens up a cavernous basement storage compartment, offering up to 229 cubic feet of storage.

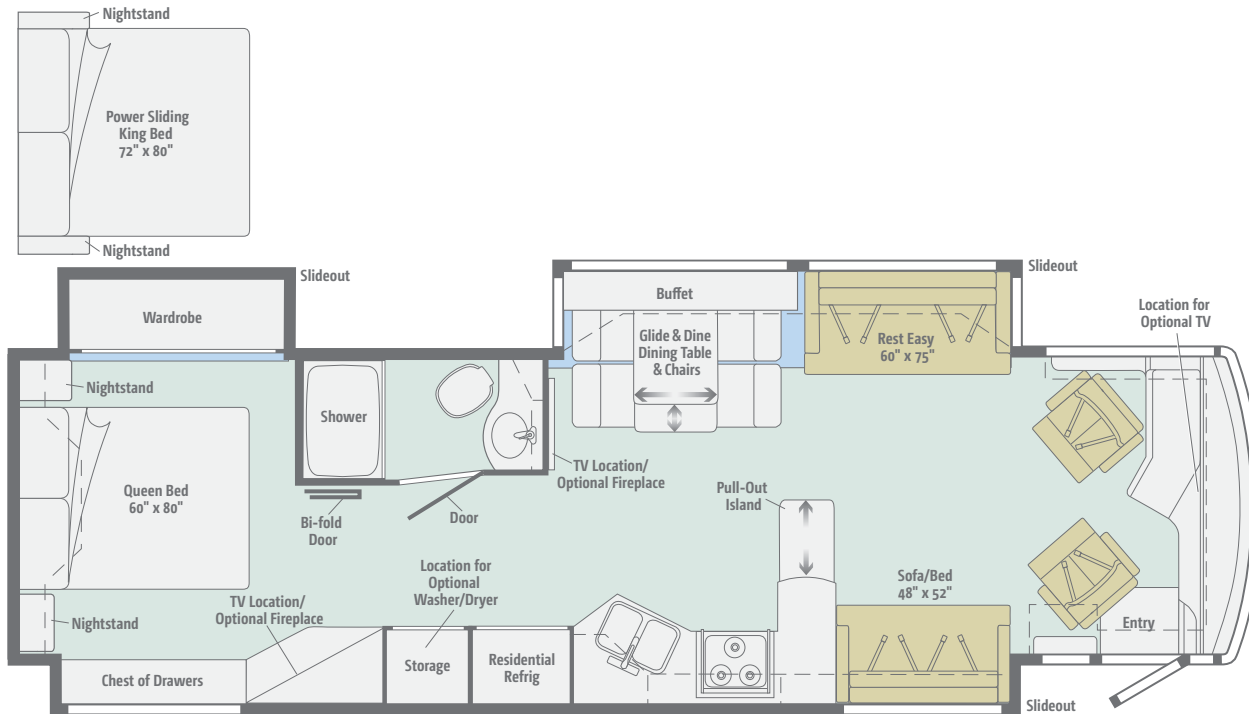




Click here to explore this floorplan's web page.

## 36M

Opposing Ultraleather™ sofas by the swivel cab seats are the perfect gathering space for family and friends. A pull-out galley island expands when you need extra countertop space for preparing sumptuous meals.



<b>Standard Ultraleather</b>	<b>Carpet</b>	<b>Porcelain Tile</b>

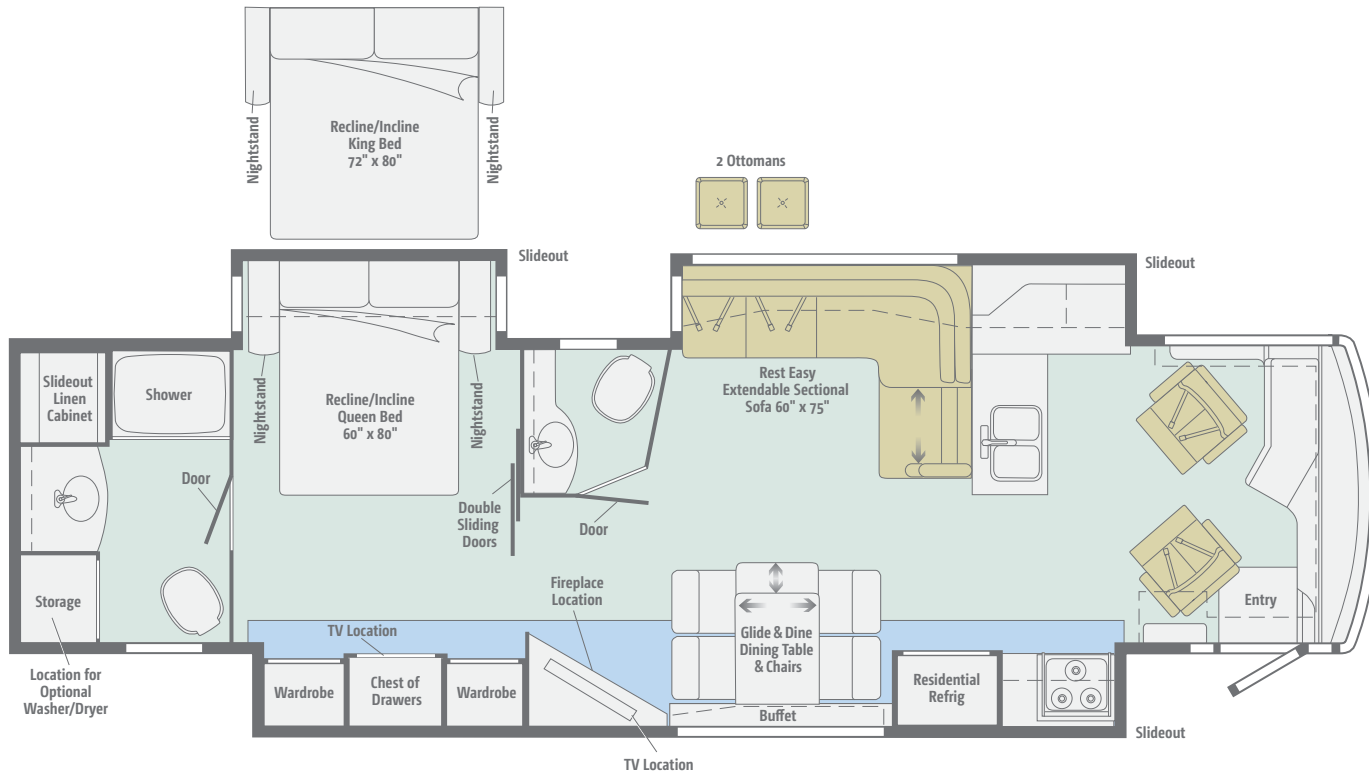
Dimensions shown are for sleeping space only and may vary due to styling differences. Dashed lines denote overhead storage areas. Floorplans and specifications are also available online at [WinnebagoInd.com](http://WinnebagoInd.com).



Click here to explore this floorplan's web page.

## 40R

With a front galley, guest bathroom, and Glide & Dine dining table/buffet, there's no coach like the 40R. The mid-coach lounge features the Rest Easy extendable sectional sofa facing a big-screen HDTV.



<b>Standard Ultraleather</b>	<b>Carpet</b>	<b>Porcelain Tile</b>

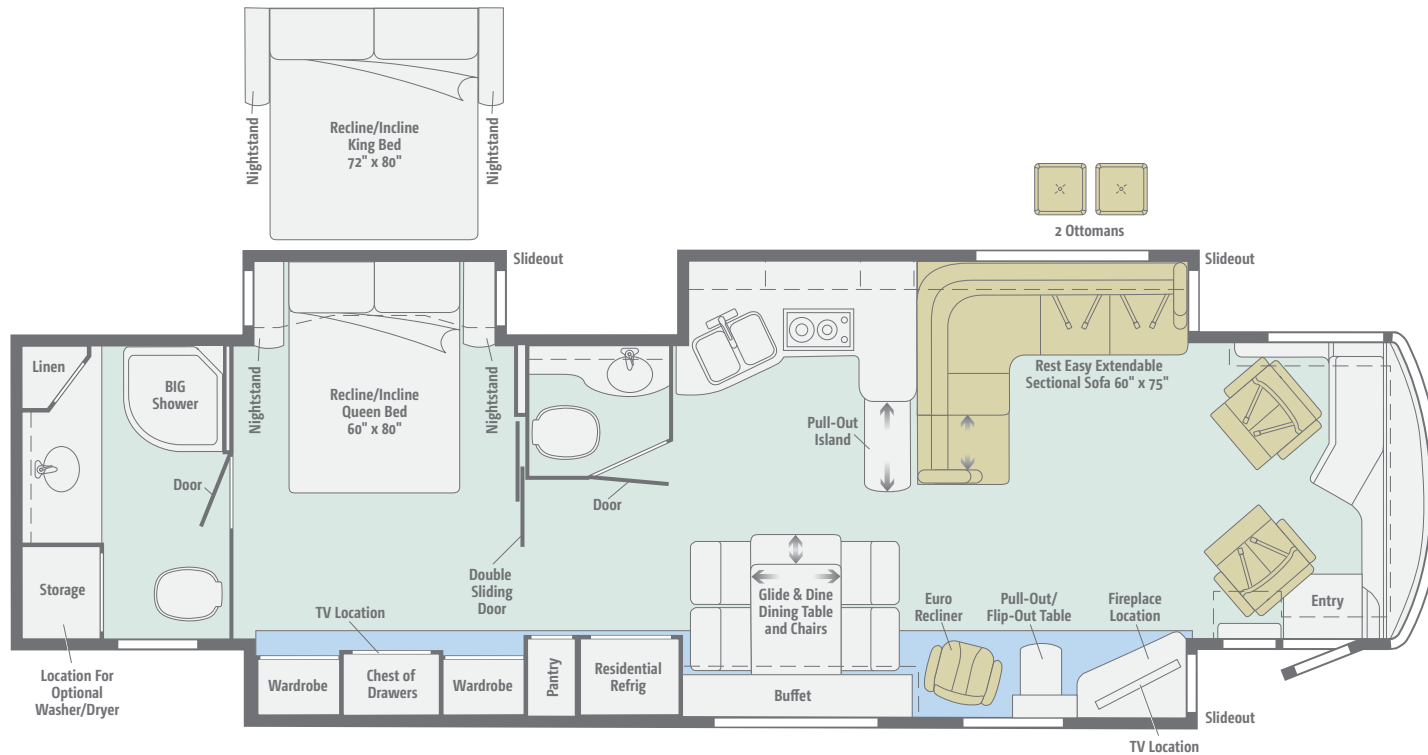
Dimensions shown are for sleeping space only and may vary due to styling differences. Dashed lines denote overhead storage areas. Floorplans and specifications are also available online at [WinnebagoInd.com](http://WinnebagoInd.com).



Click here to explore this floorplan's web page.

## 42E

The Rest Easy extendable sectional sofa, Euro recliner, and swivel Ultraleather cab seats provide plenty of options for chatting with friends or enjoying the large HDTV. An Aqua-Hot® hydronic heating system warms the coach and delivers on-demand hot water.

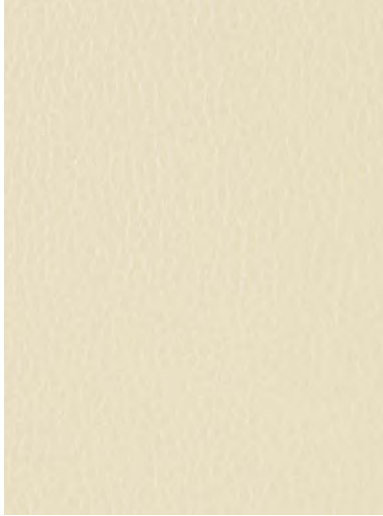


<b>Standard Ultraleather</b>	<b>Carpet</b>	<b>Porcelain Tile</b>

Dimensions shown are for sleeping space only and may vary due to styling differences. Dashed lines denote overhead storage areas. Floorplans and specifications are also available online at [WinnebagoInd.com](http://WinnebagoInd.com).

Choose from three fabric collections and four wood finishes.

## Waldorf



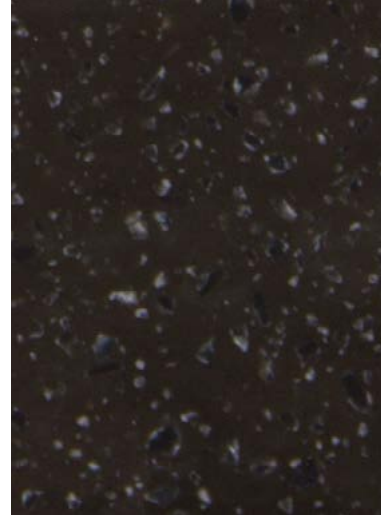
Ultraleather



Feature Fabric



Bedsread



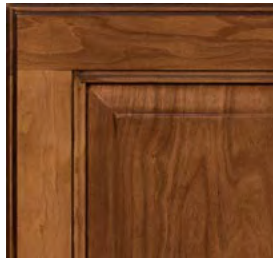
Corian Countertop



Porcelain Tile



Coffee-Glazed  
Vienna Maple



Coffee-Glazed  
Honey Cherry



Glazed Java



Glazed Driftwood

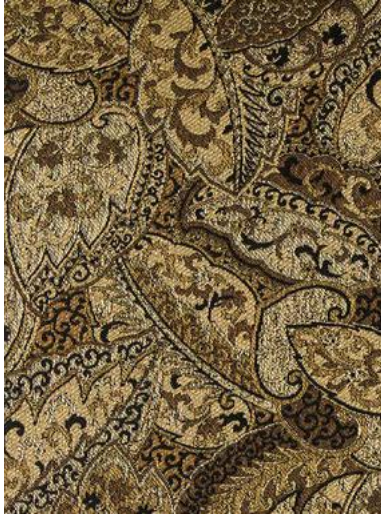
*Winnebago® reserves the right to change décor materials and specifications without notice or obligation. Décor is also available online at [WinnebagoInd.com](http://WinnebagoInd.com).*

Choose from three fabric collections and four wood finishes.

## Treasure



Ultraleather



Feature Fabric



Bedsread



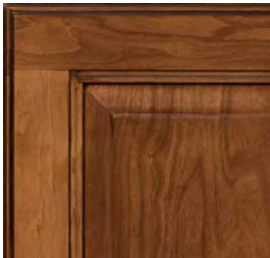
Corian Countertop



Porcelain Tile



Coffee-Glazed  
Vienna Maple



Coffee-Glazed  
Honey Cherry



Glazed Java



Glazed Driftwood

*Winnebago® reserves the right to change décor materials and specifications without notice or obligation. Décor is also available online at [Winnebagolnd.com](http://Winnebagolnd.com).*

Choose from three fabric collections and four wood finishes.

## Water Color



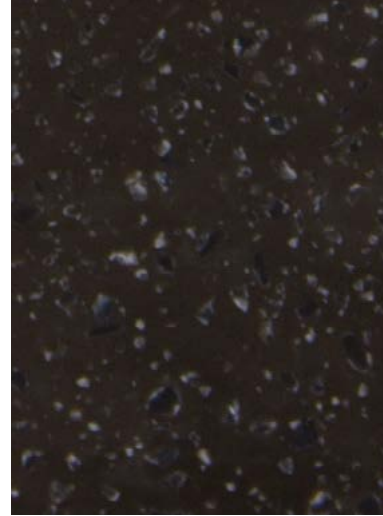
Ultraleather



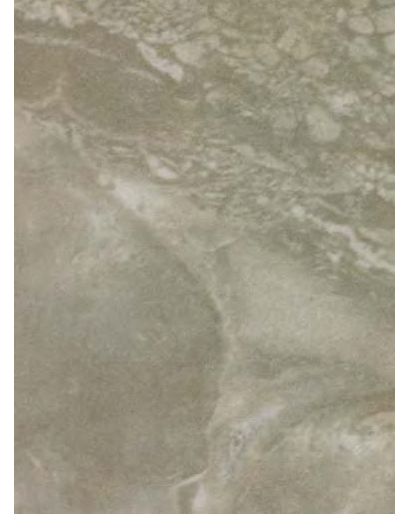
Feature Fabric



Bedsread



Corian Countertop



Porcelain Tile



Coffee-Glazed  
Vienna Maple



Coffee-Glazed  
Honey Cherry



Glazed Java



Glazed Driftwood

*Winnebago® reserves the right to change décor materials and specifications without notice or obligation. Décor is also available online at [WinnebagoInd.com](http://WinnebagoInd.com).*

Striking full-body paint with a premier automotive clearcoat finish brings more depth and shine to your Meridian.



**Beachwood**  
FULL-BODY PAINT



**Firethorn**  
FULL-BODY PAINT



**Sandstone**  
FULL-BODY PAINT

Striking full-body paint with a premier automotive clearcoat finish brings more depth and shine to your Meridian.



**Spiral Gray**  
FULL-BODY PAINT



**Titanium**  
FULL-BODY PAINT



**Windveil**  
FULL-BODY PAINT



## WEIGHTS & MEASURES

Length	37'3"	41'3"	43'7"
Exterior Height <sup>1</sup>	12'10"	12'9"	12'9"
Exterior Width <sup>2</sup>	8'5.5"	8'5.5"	8'5.5"
Exterior Storage <sup>3</sup> (cu. ft.)	183	229	196
Awning Length	20'	20'	20'
Interior Height	7'	7'	7'
Interior Width	8'0.5"	8'0.5"	8'0.5"
Freshwater Tank Capacity <sup>4</sup> (gal.)	85	85	85
Water Heater Capacity (gal.)	10	10	Continuous
Optional Water Heater Capacity	Continuous	Continuous	N/A
Holding Tank Capacity - Black/Gray <sup>4</sup> (gal.)	46/61	57/89	71/109
LP Capacity <sup>5</sup> (gal.)	28	28	5.6
Fuel Capacity (gal.)	100	100	100
GCWR <sup>6</sup> (lbs.)	42,350	53,520	59,320
GVWR (lbs.)	32,350	38,320	44,320
GAWR - Front (lbs.)	12,350	14,320	14,320
GAWR - Rear (lbs.)	20,000	24,000	30,000
Wheelbase	228"	276"	279"+ tag
Seating Capacity	6	4	4

<b>36M</b>	<b>40R</b>	<b>42E</b>
37'3"	41'3"	43'7"
12'10"	12'9"	12'9"
8'5.5"	8'5.5"	8'5.5"
183	229	196
20'	20'	20'
7'	7'	7'
8'0.5"	8'0.5"	8'0.5"
85	85	85
10	10	Continuous
Continuous	Continuous	N/A
46/61	57/89	71/109
28	28	5.6
100	100	100
42,350	53,520	59,320
32,350	38,320	44,320
12,350	14,320	14,320
20,000	24,000	30,000
228"	276"	279"+ tag
6	4	4

## Maxum Chassis<sup>®</sup>

360-hp Cummins<sup>®</sup> ISB XT 6.7L turbo-charged diesel engine (36M)

400-hp Cummins ISL 8.9L turbo-charged diesel engine (40R)

450-hp Cummins ISL 8.9L turbo-charged diesel engine (42E)

Allison<sup>®</sup> 6-speed automatic 3000 MH transmission

Information display center

160-amp. alternator

Air brakes w/ABS

Engine exhaust brake

QuickConnect<sup>®</sup> air connection w/manual shut off

Automatic hydraulic leveling jacks

7-pin trailer wiring

**Trailer Hitch<sup>®</sup>** 10,000-lb. drawbar/500-lb. maximum vertical tongue weight (36M)

**Trailer Hitch<sup>®</sup>** 15,000-lb. drawbar/1,500-lb. maximum vertical tongue weight (40R, 42E)

**Stylized aluminum wheels**

**NeWay<sup>®</sup> Front FCCC V-Ride™ rear axle/suspension** (40R, 42E drive axle)

**NeWay front and rear air suspension** (36M)

## Cab Conveniences

**Infotainment Center with Rand McNally RV GPS** 10.4" touch screen color monitor w/split screen function, 2nd monitor, Rand McNally RV GPS safe & easy routing, amenities & tools, trips & content, turn-by-turn voice guidance, AM/FM radio, steering wheel and handheld remotes, SiriusXM™ (subscription not included), compass, outside temperature, iPod®/iPhone® audio integration, Bluetooth™, color rearview camera, sideview cameras, and house mode feature (mirrors video and audio of radio screen to any TV in or on the coach)

**Cab seats** multi-position armrests, adjustable lumbar support, and multi-adjustable recline

**3-point seat belts**

**6-way power driver seat**

**6-way power passenger seat** w/manual footrest

**Cruise control**

**12-volt powerpoints**

**Powered stepwell cover**

**Powered MCD solar/blackout roller shades** (front windshield)

**Defroster fans**

**MCD solar/blackout roller shades** (driver and passenger windows)

**Chassis/house battery radio power switch**

**Power mirrors w/defrost, turn signal indicator, and sideview camera**

**TRW<sup>®</sup> tilt/telescopic steering column w/foot actuated pedal**

**Keyless entry w/remotes**

## OPTIONAL EQUIPMENT

+Lounge passenger cab seat w/flip-up workstation

## Interior

**40" HDTV** (mid-coach 36M)

**50" HDTV** (42E)

**55" HDTV** (mid-coach 40R)

**Satellite system ready**

**Digital TV amplified antenna system**

**HDMI Matrix central audio/video selection system**

**MCD solar/blackout roller shades**

**Soft vinyl ceiling**

**Accent rope lighting**

**OnePlace<sup>®</sup> systems center**

**Dual-pane, tinted, frameless windows**

**Powered ventilator fan** (galley)

**LED ceiling lights**

**Powered roof vent(s)** (bath(s))

**Washer/dryer prep**

**DVD player w/remote**

**Home theater soundbar system**

**Electric fireplace** (40R, 42E)

**Multi-plex wall switches** (NA 36M)

## OPTIONAL EQUIPMENT

Stackable washer washer/dryer

Electric fireplace (36M)

Winegard Trav'ler<sup>®</sup> automatic HDTV antenna

42" HDTV (front overhead 36M)

## Galley

Corian<sup>®</sup> countertops, sink covers, and decorative backsplash

Residential stainless steel French door refrigerator w/water dispenser, automatic icemaker, and bottom freezer drawer

Microwave/convection oven w/vented range fan (touch control)

**2-burner induction range top** (42E)

**3-burner range top w/storage below** (NA 42E)

**Pot-filler faucet** (40R)

**Cold water filtration system**

## OPTIONAL EQUIPMENT

3-burner range w/oven (NA 42E)

## Bath

Corian<sup>®</sup> countertop w/decorative backsplash

Flexible showerhead

Textured glass shower door

Skylight

Porcelain toilet w/foot pedal and sprayer (electric flush in rear bath 40R, 42E)

Area rug (40R, 42E)

## Bedroom

32" HDTV

Queen bed w/innerspring mattress and storage below (36M)

Powered queen bed w/Ideal Rest® *Natural Reserve*® digital comfort control mattress w/remotes (40R, 42E)

Bedsread and pillow shams

Headboard

Ceiling fan

### OPTIONAL EQUIPMENT

Powered, sliding king bed w/Ideal Rest *Natural Reserve* digital comfort control mattress w/remotes (36M)

Queen bed w/Ideal Rest *Natural Reserve* digital comfort control mattress w/remotes (36M)

Powered king bed w/Ideal Rest *Natural Reserve* digital comfort control mattress w/remotes (40R, 42E)

Fireplace (36M)

## Exterior

Powered patio awning w/motion sensor and LED lighting

KeyOne® lock system

Porch light w/interior switch

Powered entrance awning w/LED lighting

Lighted storage compartments

Driver's side docking/service light

Lighted stepwell w/interior switch

Slideout storage compartment tray

Storage containers w/lids (4)

Automatic entrance steps

Auxiliary side lamps

Full-width mudguard

Lower front protective mask

Premier clearcoat automotive finish

Rear mud flaps

### OPTIONAL EQUIPMENT

Entertainment Center w/HDTV (36M)

Entertainment Center w/HDTV, soundbar, and wireless subwoofer (NA 36M)

Portable refrigerator/freezer on roll-out tray Ladder (backwall)

## Heating & Cooling System

TrueAir® Maximum Comfort air conditioner, 13,500 BTU (2 cooling units 36M; 40R, 42E)

Air conditioner heat pumps

2-20,000 BTU ducted furnaces (36M)

1-20,000 BTU ducted furnace and 1-25,000 BTU ducted furnace (40R)

Multi-zone thermostat

Aqua-Hot® 400 hydronic dual-zone heating system w/continuous hot water (42E)

## Electrical System

Service Center lighted, cable TV input, 50-amp. power cord, QuickPort® shoreline/generator automatic changeover switch, portable satellite hookup

2,800-watt inverter/charger w/remote panel w/battery disconnect

8,000X-watt Cummins Onan® Quiet Diesel™ generator (able to operate 3 roof air conditioners) (40R, 42E)

8,000-watt Cummins Onan Quiet Diesel generator (36M)

Cummins Onan Energy Command™ automatic generator start system

Auxiliary start circuit

AC/DC electrical distribution system

6 deep-cycle Group 31 Marine/RV AGM batteries

Battery disconnect system (coach and chassis)

PowerLine® Energy Management System

Automatic dual-battery charge control

Exterior antenna jack and AC duplex

### OPTIONAL EQUIPMENT

100-watt solar panel battery charger

## Plumbing System

Service Center pressurized city water hookup w/diverter fill, freshwater drain, drainage valves, exterior wash station w/pump switch, black tank holding tank flushing system, 20' sewer hose w/QuickConnect®, QuickPort

On-demand water pump

10-gallon water heater 110-volt/LP gas w/motoraid (NA 42E)

TrueLevel™ holding tank monitoring system

Winterization Package water heater bypass valve, siphon tube, and diverter valve

Full-coach water filtration system

Permanent-mount LP tank w/gauge (NA 42E)

LPG accessory connection (patio area)

Heated holding tank compartment

### OPTIONAL EQUIPMENT

Tankless water heater (NA 42E)

## Safety

LP, smoke, and carbon monoxide detectors

10 BC fire extinguisher

Ground fault interrupter

Fog lamps

High-mount brake lamps

Daytime running lamps

## Warranty<sup>7</sup>

12-month/15,000-mile basic limited warranty<sup>8</sup>

36-month/36,000-mile limited warranty on structure<sup>8</sup>

10-year limited parts-and-labor warranty on roof skin<sup>8</sup>

### FOOTNOTES

- The height of each model is measured to the top of the tallest standard feature and is based on the curb weight of a typically equipped unit. The actual height of your vehicle may vary by several inches depending on chassis or equipment variations. Please check with your dealer for further information.
- Floorplans feature a wide-body design - over 96." In making your purchase decision, you should be aware that some states restrict access on some or all state roads to 96" in body width. Before making your purchase decision, you should confirm the road usage laws in the states of interest to you.
- The load capacity of your motorhome is designated by weight, not by volume, so you cannot necessarily use all available space when loading your motorhome.
- Capacities are based on measurements prior to tank installation. Slight capacity variations can result due to installation applications.

5. Capacities shown are tank manufacturer's listed water capacity (W.C.). Actual filled LP capacity is 80% of listing due to overfilling prevention device on tank.

6. Actual towing capacity is dependent on your particular loading and towing circumstances which includes the GVWR, GAWR, and GCWR as well as adequate trailer brakes. Please refer to the Operator's Manual of your vehicle for further towing information.

7. See separate chassis warranty.

8. See your dealer for complete warranty information.

NA Not Available

Not all items available in combination. See dealer for details.

Winnebago's® continuing program of product improvement makes specifications, equipment, model availability, and prices subject to change without notice. Published content reflects the most current product information at time of printing. Please consult your dealer for individual vehicle features and specifications.



Let us host your next

# Adventure



[WGOAdventures.com](http://WGOAdventures.com)

Connect with Winnebago (Click one of the following)



Like us



Follow us



Watch us



Show your Winnebago love with high-quality gifts and wearables.



Apparel | Gifts | Parts | Gear

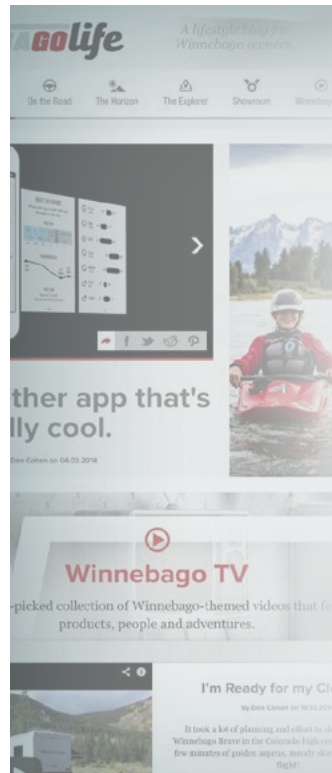
[WinnebagoOutdoor.com](http://WinnebagoOutdoor.com)

Find your style



## WinnebagoInd.com Has All The Answers

Visit [WinnebagoInd.com](http://WinnebagoInd.com) on your computer, smartphone, or tablet for the latest product information and updates.



## Welcome to GoLife!

Visit our lifestyle blog for motorhome news, personal travelogues, and community stories.

[WinnebagoLife.com](http://WinnebagoLife.com)

# GoLife

# **PREFERRED CARE PROGRAM**

We back our motorhomes with best-in-class support both before and after the sale:

- 12-month/15,000-mile basic limited warranty
- 36-month/36,000-mile limited warranty on structure
- 10-year limited parts-and-labor warranty on fiberglass roof
- Complimentary 24-hour roadside assistance program
- TripSaver® Fast Track Parts guarantees that in-stock warranty parts ship directly to your dealer within 24 hours
- National dealer service network



For more information:  
[WGOService.com](http://WGOService.com)



From RV to personal insurance, Winnebago RV Insurance can provide all the coverage and services you need to feel at home on the road.

**For more information:**  
**(800) 642-4892**



## CONTACT US

### GENERAL INQUIRIES

Corporate Switchboard  
(641) 585-3535

### CURRENT PRODUCT OWNER AND SERVICE-RELATED INQUIRIES

(800) 537-1885  
or [winnebagoind.com](mailto:winnebagoind.com)

### NEW VEHICLE SALES INQUIRIES

[sales@winnebagoind.com](mailto:sales@winnebagoind.com)

### FAX

(641) 585-6966

### POSTAL ADDRESS

Winnebago Industries, Inc.  
P.O. Box 152  
Forest City, IA 50436

### STREET ADDRESS

Winnebago Industries, Inc.  
605 West Crystal Lake Road  
Forest City, IA 50436



## Join the Club, Join the Fun

Here's the perfect way to begin your life on the road as the owner of a new Winnebago – by joining the exclusive WIT Club. Start your adventure with other fun-loving WIT Club members from across the country and get the most out of your new Winnebago motorhome.



### Members enjoy:

- Caravans and rallies
- Newsletters
- Local and state group activities
- RV travel benefits

See more at  
[WITClub.com](http://WITClub.com)



## Grand National Rally

Each year, thousands of Winnebago owners descend upon Forest City, Iowa. Rally-goers enjoy an unforgettable week reconnecting with friends, taking tours, participating in activities, and more. Join the adventure next July!



[LaMesaRV.com](http://LaMesaRV.com)  
**800-496-8778**