

**Dutchmen**  
Legendary Innovation. Trailblazing Value.

TOY HAULERS BY

**EPIC**  
SERIES



THE **ADVENTURE** THAT  
WILL LAST A **LIFETIME**



VOLTAGE  
**EPIC**  
SERIES



Voltage Epic 3970 | HAZEL

## THE FEATURE HEAVY HAULER

From solid-surface quartz countertops to a full-size 21" oven and 3-burner range with convection microwave, your kitchen space is just a glimpse of what our passengers can expect to find inside and out.

## MEET THE **ALL-NEW** EPIC SERIES

You won't find a toy hauler on the market offering more for your money than Voltage's Epic Series, with its highly adaptable garage space and feature-rich living areas. Paired with top of the line MORryde features, like a Zero-Gravity ramp door, "pin-less" patio system and easy entry steps. The Epic Series is your step up to the ultimate RV experience.



## HIGH-END FINISHES

The large stainless-steel kitchen sink is perfect for all of your food washing and mealtime preparations, even doubling as an extended countertop with included sink covers.



## AMPLE FOOD STORAGE

An 18 cu. ft. refrigerator is complemented by a hefty pantry space to store on-the-go snacks and in-depth meal ingredients, all without bogging down overall kitchen space.

## A CONTEMPORARY LIVING SPACE

Once the toys have been stored away and the day has come to an end, Epic's upgraded residential furniture greets you with massaging seats that are also heated and LED-lit to produce a comforting environment flush with spa-like qualities.

Voltage Epic 3970 | HAZEL



VOLTAGE  
**EPIC**  
SERIES

S T E P U P Y O U R A D V E N T U R E

## DELUXE ENTERTAINMENT

The Epic provides a large LCD HD main TV with a Kenwood three-zone sound system, upgraded soundbar and wireless subwoofer. Your entertainment comes complete with HDMI, DVD and multi-sourced entertainment capabilities.



# EPIC

## ADVENTURE READY

When you take to the road in an Epic Series toy hauler, you're not the only one benefiting from a luxury ride. The extreme toys you take along will also enjoy a sheltered, secure and smooth trip that delivers innovative operating systems and all the right tools for the haul, making this one completely epic ride.



## FIRST-CLASS SLEEPING QUARTERS

You'll come to expect restful nights in a large master bedroom with a memory foam mattress, residential duvet covers and blackout roller shades.



Voltage Epic 3970 | HAZEL

## DOVETAIL STORAGE



### ROOM FOR YOUR GEAR

These haulers come with space to store all you need for your travels, all out of sight and secure.

## YOU'RE IN COMMAND

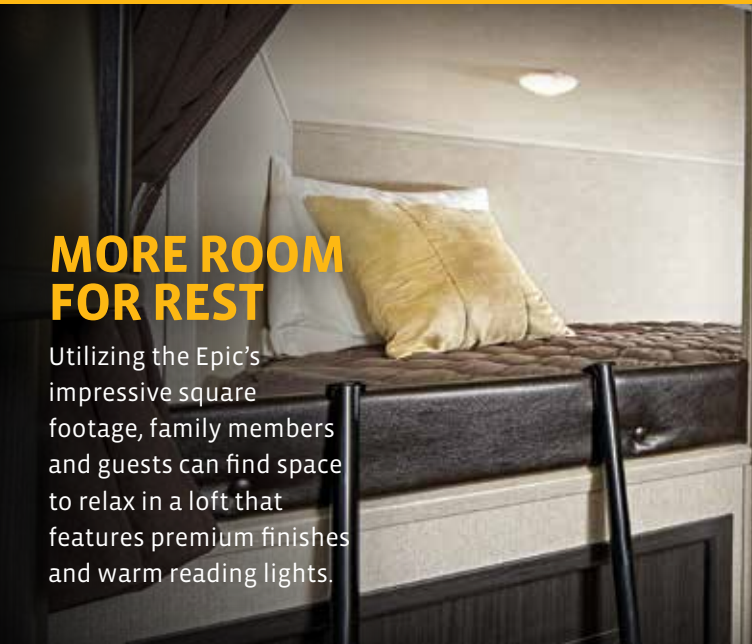


## WHOLE-HOME TECHNOLOGY

Your Epic comes with iN-Command, the most in-depth remote operating system in towable RVs.

## MORE ROOM FOR REST

Utilizing the Epic's impressive square footage, family members and guests can find space to relax in a loft that features premium finishes and warm reading lights.



## A SLEEK BATHROOM

Your bathroom features amenities found in luxury homes, like solid-surface countertops, a sizable vessel bowl sink, as well as ample storage behind pillow style hardwood cabinet doors.



## PLENTY OF BREATHING ROOM

This multi-functional garage space and living area was designed to provide families with options. Whether it's a place to store toys, an area to unwind or a space reserved for mealtime gatherings, you'll never have to worry about running out of room.

Voltage Epic 3970

SPACIOUS LOFT

QUARTZ COUNTERTOPS

CONVECTION MICROWAVE

EVERY DETAIL ACCOUNTED FOR

Dollar for dollar, the Epic is the most heavily featured toy hauler in the industry, with numerous premiums packed inside and out, including a Quiet Cool A/C with 15,000-BTU.

# EPIC

## ZERO-GRAVITY RAMP DOOR

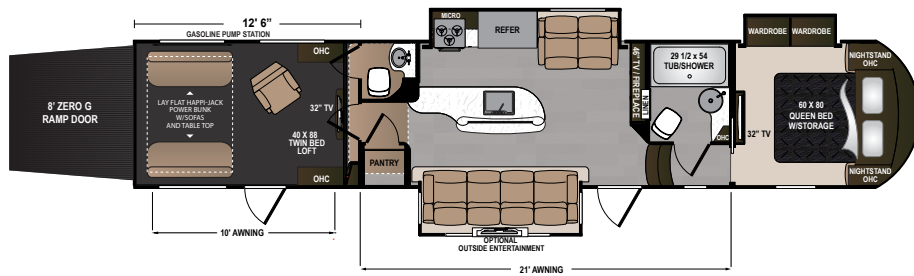
Raise and lower the ramp door with just one finger. MORryde's Zero-Gravity ramp door handles as if the door is weightless, creating the safest ramp door in the industry. Now with an electric locking system and a re-designed hinging system, setup and teardown is easier than ever.

ZERO-GRAVITY IN ACTION  
EFFORTLESS OPERATION WITH  
ADDED SAFETY AND SECURITY

STEP UP YOUR  
ADVENTURE

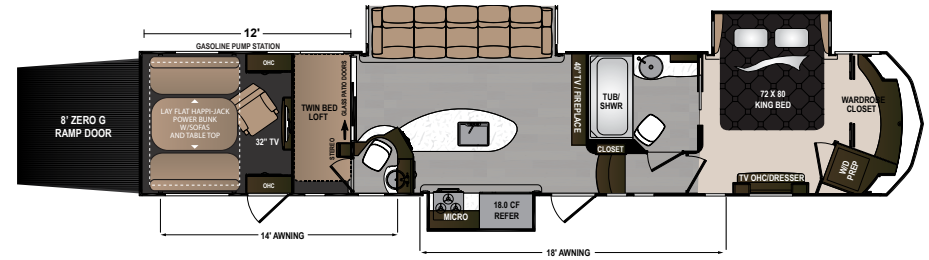


# EPIC FLOOR PLANS



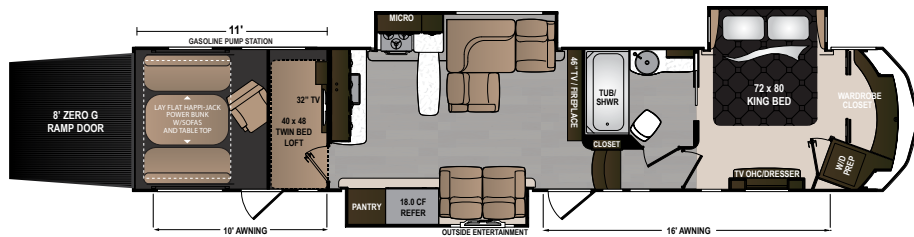
## VOLTAGE EPIC SERIES | 3890

Ext. Length: 42' 11" Ext. Height: 13' 3" Average Shipping Weight: 15,880 Sleeps: 8



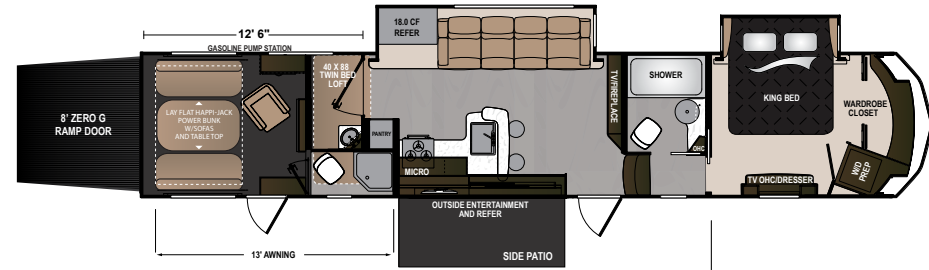
## VOLTAGE EPIC SERIES | 3990

Ext. Length: 43' 9" Ext. Height: 13' 4" Average Shipping Weight: 16,257 Sleeps: 8



## VOLTAGE EPIC SERIES | 3970

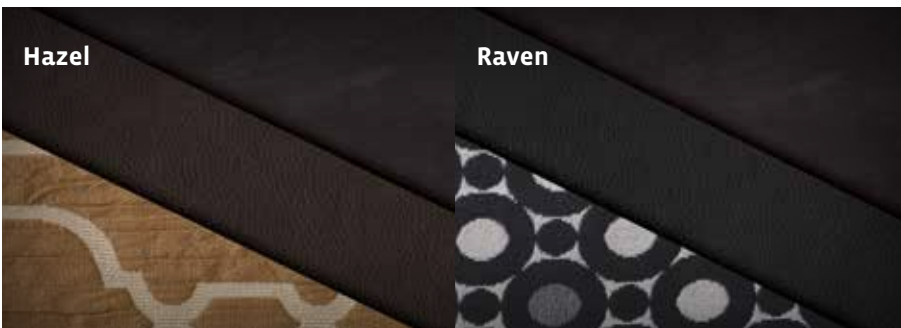
Ext. Length: 43' 10" Ext. Height: 13' 4" Average Shipping Weight: 16,171 Sleeps: 8



## VOLTAGE EPIC SERIES | 4150

Ext. Length: 44' 1" Ext. Height: 13' 4" Average Shipping Weight: 16,464 Sleeps: 8

## INTERIOR DÉCOR CHOICES



**DISCLAIMER:** Product information is as accurate as possible as of the brochure publication date. All features, floorplans and specifications in this brochure are subject to change without notice. Please consult Dutchmen's website at [www.Dutchmen.com](http://www.Dutchmen.com) for current product information and specifications. Tow Vehicle Disclaimer. **CAUTION:** Owners of Dutchmen recreational vehicles are solely responsible for the selection and proper use of tow vehicles. All customers should consult with a motor vehicle manufacturer or their dealer concerning the purchase and use of suitable tow vehicles for Dutchmen products. Dutchmen disclaims any liability or damages suffered as a result of the selection, operation, use or misuse of a tow vehicle. DUTCHMEN'S LIMITED WARRANTY DOES NOT COVER DAMAGE TO THE RECREATIONAL VEHICLE OR THE TOW VEHICLE AS A RESULT OF THE SELECTION, OPERATION, USE OR MISUSE OF THE TOW VEHICLE. REFERENCE DUTCHMEN MANUFACTURING OWNERS MANUAL FOR LIMITED WARRANTY DETAILS.

## EPIC STANDARDS AND OPTIONS

### MANDATORY FEATURES

12V Tank Heater with Interior Switches
18 cu. ft. Four Door Refrigerator
2nd A/C - Bedroom Ducted 15k-BTU with Thermostat Sensor
2nd Awning Over Garage Entrance Door
3rd A/C with Power Management System
6-Point Hydraulic Auto-Leveling System
Central Vacuum with Tools and Dust Pan
Exterior Entertainment Center - 24" LED TV in Locking Cabinet w/ Upgraded Speakers
Lay Flat HappiJac Power Bunk
MORryde Rubber Pin Box
NitroFill - Nitrogen Filled Tires
Ramp Door Patio with Entry Steps and Awning
Removable Edged Cargo Carpet
Residential Convection Microwave Oven
Voltage Chair
Voltage Exterior Package
Voltage Logo Deck Chairs
Voltage Luxury Interior Package
<b>VOLTAGE LUXURY INTERIOR PACKAGE</b>
15k Main A/C with Quiet Cool Technology
2 Indoor/Outdoor Speakers
Adjustable TV Bracket
Atwood 10-Gallon DSI Water Heater w/19.7 GPH Recovery

Atwood 3-Burner Range & Range Cover
Back Lighted Backsplash
Bathroom Power Fan with Rain Sensor and Thermostat
Galley Power Fan with Rain Sensor
Garage Power Fan with Rain Sensor and Thermostat
I Relax Memory Foam Mattress
Jensen iN-Command Operating System
Klipsch Sound Bar with Subwoofer
Large HD LED Living Area TV
LED Puck Lighting
MCD Roller Blinds in the Main Living Area and Bedroom
Night Shades in the Garage
Pendant Lighting
Pressed Wood Steps (Select Models)
Quartz Countertops
Residential Convection Microwave Oven
Residential Duvet Covers
Residential Furniture w/LED Lighted, Massaging, and Heated Seats
Satellite Prep at Every TV Location
Touch Screen Stereo with Remote on Exterior Wall and Zoned Volume Control
Tuff Ply Flooring in Garage and Pass Through Storage Area
USB Power Stations by the Night Stand and in the Outside Pass Through Storage Area

Washer and Dryer Prep
<b>EXTERIOR PACKAGE</b>
1" Thick Metal Slam Latch Baggage Doors
16" Aluminum Wheels
40,000-BTU Furnace
50-amp Service with 50 ft. Cord and Indicator Lights
7,000-lb Axles with Ultra Lube
7,040-lb Load Range E-Rated HD Tires
Aluminum Quad Entry Steps
Dual Gas Tanks (40- and 30-Gallon)
Exterior Convenience Center with Hidden Water Connections
Fiberglass Front Cap
Fold Down Exterior Roof Ladder
Full Size 30" Entry Door with Slider Window
Fully Walkable Roof
Generator Prep with Hour Meter and Interior Start/Stop Switch
Ground Effects Light Package
Heated and Enclosed Underbelly (Forced Heat)
Large Electric Awning with LED Lights
LED Exterior Lighting
LED Front Cap Lights
MORryde CRE 3000 Suspension
Nitro Fill Tires
Omni Direction Cable/Satellite Antenna

Outdoor Speakers
Partially Painted Front Cap
Pillow Style Cherry Hardwood Cabinet Doors
Pump Station Timer Switch
Solar Prep
Spare Tire with Carrier
Tinted Safety Glass Frameless Windows
Upgraded Graphics
Upgraded Graphics with 3-Year Warranty
Vented Attic
Water Heater By-Pass
Zero G Ramp Door by MORryde
<b>GARAGE PACKAGE</b>
LED TV
2 Indoor and Outdoor Speakers
2,500-lb Tiedowns
22" Diamond Plate
5' Safety Glass Patio Door with Screen (Select Models)
Full Size 30" Entry Door with Screen and Gas Strut
Indoor/Outdoor Speaker On/Off Switch
Insulated Heat and A/C Ducts
Metal Ram Air Vents (2)
Privacy Curtain with Tieback (Select Models)
Tuff Ply Gas and Oil Resistant Flooring
Upgraded Wood Entrance Door with

Glass Insert (Select Models)
Wall To Wall Dovetail Storage
Washer/Dryer Prep
<b>GENERATOR OPTIONS</b>
Generator Ready (Generator Prep)
Onan 5.5-kw Gas Generator
<b>OPTIONS</b>
Dual Pane Safety Glass Windows
G-Rated Radial Tires
Ramp Door Patio w/ Entry Steps and Awning
Removable, Edged Cargo Carpet
Three Season Patio Door IPO Screen Wall
Voltage Chair
Voltage Logo Deck Chairs (2 per Box)
<b>CUSTOM FULL BODY PAINT OPTIONS</b>
Black and Blue Paint
Black and Red Paint
Earth Tone and Burgundy Paint
Gel Coat Glass Upgrade
<b>CODES &amp; SEALS</b>
CSA Construction and Seal
RVIA Seal
State Seal (where applicable)
Winterization (Oct - April)

## EPIC SPECIFICATIONS

FLOORPLAN	DIMENSIONS			WEIGHTS (LBS.)			TANKS (GALS.)		
	*EXTERIOR TRAVEL LENGTH	EXTERIOR WIDTH	EXTERIOR HEIGHT (WITH A/C)	**AVERAGE SHIPPING WEIGHT	DRY HITCH WEIGHT	CARGO CARRYING CAPACITY	***FRESH WATER CAPACITY	GREY WATER CAPACITY	BLACK WATER CAPACITY
3890	43', 0"	100"	159"	15,988	3,481	4,012	160	114	96
3970	43', 10"	100"	160"	16,244	3,546	3,756	160	90	45
3990	43', 9"	100"	160"	16,340	3,432	3,660	160	90	90
4150	44', 1"	100"	160"	16,820	3,913	3,180	160	107	83

\*Length is defined as the distance from the centerline of hitch pin/coupler to rear bumper of trailer. \*\*Our weights represent how most units are built, inclusive of many commonly-ordered options. \*\*\*Fresh water capacity includes water heater capacity.

STEP UP **YOUR  
ADVENTURE**

VOLTAGE  
**EPIC**  
SERIES



**Dutchmen—A North American Campground Classic**

Few manufacturers have built RVs for 25+ years, and only one has set the standard for innovation AND value. Dutchmen IS “A North American Campground Classic.”



**Dutchmen**<sup>®</sup>

*Legendary Innovation. Trailblazing Value.*

# MORE STANDARD FEATURES MORE VALUE

Dutchmen RVs turn more heads on the lot and in the campground than any other. Why? While other manufacturers offer features as options, Dutchmen tends to make those same features standard. Call it “bang for the buck,” “more for your money,” or simply “more value.” **We’ve built a reputation for bringing RV owners more standard features for less money** for more than 25 years... and it’s a reputation we plan to keep.

PO BOX 2000 • 2164 Caragana Court • Goshen, Indiana 46527 • Sales: 574.537.0600 • [www.dutchmen.com](http://www.dutchmen.com)

EPIC-HM0117-24K

**3000**  
**STRONG**  
**NATION WIDE DEALER NETWORK**

More than 300 Dutchmen dealers across North America and our industry-leading service center in Goshen, Indiana, combine for your peace of mind before, during and after the sale. Rest assured no matter where your travels take you, **the best-resourced RV manufacturing company in the world is behind you all the way.**

To check for recent updates to floorplans and specifications. Scan this QR CODE with your favorite QR Reader application.



**[www.dutchmen.com](http://www.dutchmen.com)**

Visit us online to see all of the Dutchmen brands, innovative models and spacious floor plans.



At Dutchmen, quality is our standard. **Every single Dutchmen RV that comes off the line receives its own pre-delivery inspection.** Typically, a competitor performs random inspections, meaning you won’t find this commitment to quality anywhere else.

Your local dealer

**LAMESA RV**  
EXPERIENCE LIFE  
[www.lamesarv.com](http://www.lamesarv.com)  
**800-496-8778**

From giving advice to servicing products, we consider our loyal dealers the best resource for learning about Dutchmen products.