

*Legacy*

CHOOSE YOUR LEGACY.



A BERKSHIRE HATHAWAY COMPANY



## COMFORT AND CONVENIENCE

WITH THE LEGACY FROM FOREST RIVER YOU GET THE BEST OF BOTH WORLDS, COMFORT AND CONVENIENCE. THE COCKPIT IS DESIGNED TO BE BOTH COMFORTABLE AND EASY TO ADJUST FOR ANY DRIVER TYPE. THE LIVING AREA IS OPEN AND INVITING, WHICH IS GREAT FOR BOTH ENTERTAINING FAMILY AND FRIENDS OR WINDING DOWN AFTER A LONG DAYS JOURNEY TO YOUR FAVORITE DESTINATION.

NATIVE CHERRY SIERRA MAPLE

WOOD GRAIN  
OPTIONS



# 38C

ALL PICTURES  
STONECREST PUTTY DECOR  
NATIVE CHERRY WOOD GRAIN







## RESIDENTIAL THROUGHOUT

ENJOY THE WARM AND RICH RESIDENTIAL LOOK AND CONVENIENT FEATURES FOUND THROUGHOUT THE LEGACY. THE KITCHEN BOASTS A 30" OTR CONVECTION MICROWAVE, STAINLESS STEEL SINK, SEALED 3 BURNER COOK TOP AND IS LUXURIOUSLY FINISHED WITH HANDCRAFTED ALL HARDWOOD CABINETY.

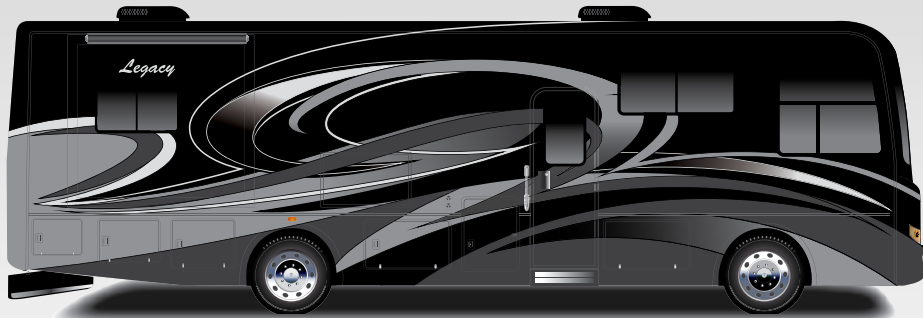
# ABOVE AND BEYOND

WITH OUR ATTENTION TO DETAIL, NOTHING ABOUT THE LEGACY HAS BEEN LEFT TO CHANCE. THE LEGACY HAS BEEN DESIGNED TO MAXIMIZE SPACE AND DELIVER COMPLETE CONVENIENCE. THE OPTIONAL OVERHEAD BED LIFT PROVIDES EXTRA SLEEPING QUARTERS, THE WILLIAMSBURG DOUBLE STITCH SOFA IS COMFORTABLE AND CONTEMPORARY AND THE RAISED PANEL HARDWOOD CABINET DOORS ARE SURE TO MAKE A LASTING IMPRESSION.

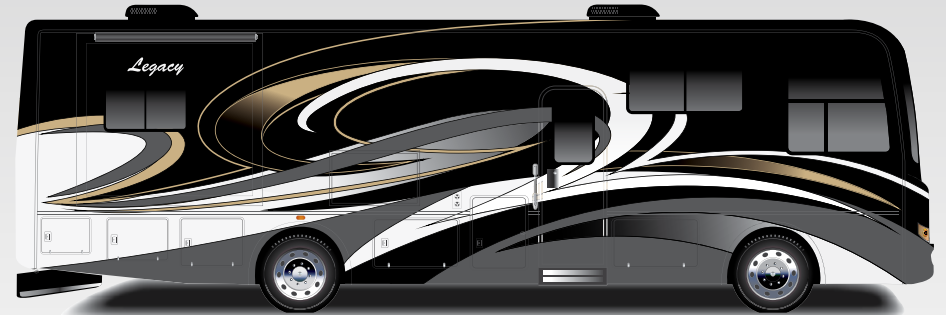


# EXTERIOR PAINT OPTIONS

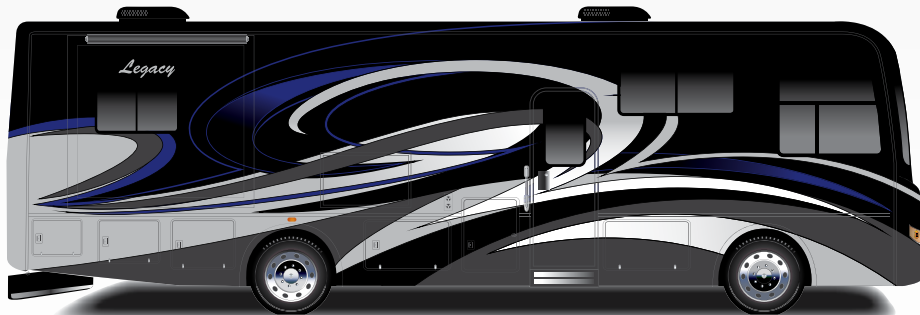
THE LEGACY DESIGN TEAM HAS DEVELOPED FOUR EXCITING EXTERIOR FULL BODY SIKKENS® PAINT OPTIONS THAT INCLUDE A 4X CLEAR COAT FOR DURABILITY. COMBINE ONE OF THESE GREAT PAINT SCHEMES WITH YOUR CHOICE OF ONE OF OUR SIX PROFESSIONALLY DESIGNED INTERIORS AND CREATE YOUR PERFECT COACH.



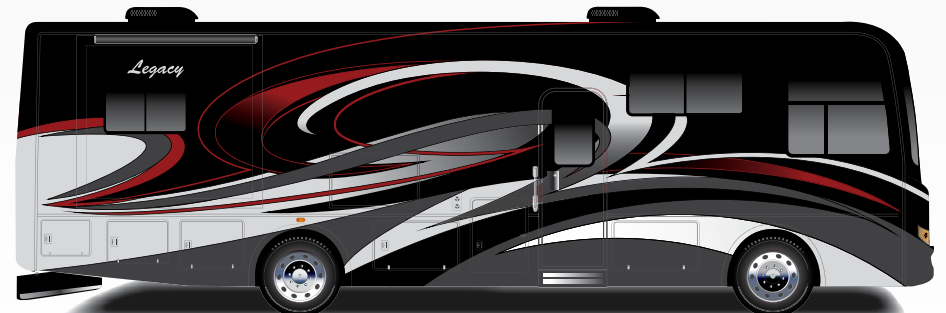
SILVER BLADE



BRONZE



JET BLUE



VIPER



**6.**

INSTANT CONSTANT ENDLESS

**Truma AquaGo® - the revolutionary instant water heater**

The Truma AquaGo® hybrid instant water heater gives you a superior experience that starts with endless hot water. But that's just the start. Multitask German engineering has taken the revolutionary Truma AquaGo® to a truly higher level with innovations that better accommodate your lifestyle.

For more information visit [www.truma.com](http://www.truma.com) or call 888-888-7863

**Exclusive desulfurization technology - Extends life and maintains performance**

- The AquaGo's only instant water heater that has desulfurized
- Removes sulfur that can build up in the tank to help eliminate and prevent
- Water heater maintenance costs
- It's the only instant water heater that

**Truma hybrid technology keeps temperature constant - No waiting**

- The only instant water heater providing
- Constant hot water through 97 constant
- Operating temperatures and flow
- Without waiting

**Simple name "Easy Drain Lever" - Winterization done**

- It's now been so easy to winterize your
- Truma AquaGo® that you can do it
- yourself. No need to call a professional
- and pay for the Truma AquaGo®
- and your Truma AquaGo®
- throughout the winter.

**truma**  
More comfort. No less.

## EXTERIOR FEATURES

1. STANDARD EXTERIOR ENTERTAINMENT CENTER BUILT INTO THE SIDEWALL 2. EASILY ACCESSIBLE ELECTRICAL FUSES WITH LEGACY'S NO FUSS SCHEMATIC 3. STANDARD SIDE HINGE COMPARTMENT DOORS WITH PASS-THRU STORAGE 4. WHOLE COACH WATER FILTER, DOCKING STATION AND EXTERIOR SHOWER 5. CONVENIENT GENERATOR ACCESS 6. TRUMA CONTINUOUS FLOW HOT WATER HEATER

# DECOR OPTIONS / STANDARDS AND OPTIONS



## TIGERS EYE KHAKI

FLOORPLAN	34A	340BH	360RB	38C
<b>AUTOMOTIVE &amp; COCKPIT STANDARDS</b>				
Freightliner XCS Straight Rail Chassis	S	S	S	S
Cummins ISB Turbo Diesel 6.7 liter 340 HP at 2800 RPM, 700 ft. lbs. Torque at 1600 RPM	S	S	S	S
Allison MH-2500 6-Speed Automatic Transmission w/ Push Button Shifter	S	S	S	S
120v Engine Heater 750W	S	S	S	S
22.5" Polished Aluminum Wheels	S	S	S	S
Michelin XRV 255/80R22.5 14 Ply Radial Tires	S	S	S	S
Trailer Hitch	S	S	S	S
90 Gallon, Locking Dual Fill Fuel Tank	S	S	S	S
Driver Side Mounted 13 Gallon DEF Tank	S	S	S	S
LCD Engine Message Center	S	S	S	S
Day Time Running Lights	S	S	S	S
7-Pin Tow Power Connector	S	S	S	S
18.7 CFM Air Compressor	S	S	S	S
Farr Eco-air Cleaner	S	S	S	S
Air Filter Restriction Indicator	S	S	S	S
Fuel/Water Separator	S	S	S	S
Brake Line Air Dryer w/ Heater	S	S	S	S
Automatic, Heated Moisture Ejectors	S	S	S	S
Power Steering	S	S	S	S
Washer/Wiper w/ Intermittent Function	S	S	S	S
160 Amp Alternator	S	S	S	S
Two (2) 1900 CCA at 0 degree Fahrenheit, Maintenance Free Batteries	S	S	S	S
Full Air ABS Brakes w/ Auto Slack Adjuster	S	S	S	S
Variable Exhaust Brake	S	S	S	S
Telescopic/Tilt Steering Wheel	S	S	S	S
Suspension Neway Front and V-ride Rear	S	S	S	S
Heavy Duty Front Shock Absorbers	S	S	S	S
55 degree Wheel cut	S	S	S	S
Air Suspension Deflation System	S	S	S	S
Cross Flow, Rear Mounted Radiator	S	S	S	S
Transmission Oil Cooler	S	S	S	S
5 year / 100,000 Mile Coolant (some maintenance required)	S	S	S	S
4-Spoke VIP Black Steering Wheel	S	S	S	S
Electronic Cruise Control w/ High Idle	S	S	S	S
Multiple Auxiliary Charging Ports at Dash	S	S	S	S
<b>CONSTRUCTION &amp; EXTERIOR STANDARDS</b>				
Fiberglass Front and Rear Caps	S	S	S	S
Full Body Painted Exterior (4x clear coat)	S	S	S	S



## TIGERS EYE PUTTY

FLOORPLAN	34A	340BH	360RB	38C
<b>FLOORPLAN</b>				
Four (4) Point Fully Auto Equalizer	S	S	S	S
Hydraulic Leveling System w/ Manual Dump	S	S	S	S
Steel Basement Structure	S	S	S	S
Rust Resistant Aluminized Steel Chassis Skirts	S	S	S	S
Diamond Shield Front Mask Protective Film	S	S	S	S
1 Piece Fiberglass Roof	S	S	S	S
Top-mount Remote Exterior/Heated/Mirrors w/ Cameras	S	S	S	S
Frameless Dual Pane, Dark Tint Windows	S	S	S	S
Automotive Foam and Ziebart Seal Undercoating	S	S	S	S
Carefree Latitude Dual Pitch Patio Awning w/ LED Lighting & Wind Sensor	S	S	S	S
Carefree S/O Topper w/ Covers	S	S	S	S
Strut Assisted Side-Hinged Ext/Baggage Doors w/ Full Pass Through Storage	S	S	S	S
"One Key" System, Ext-Compartment, Entry Door & Fuel Fill Doors	S	S	S	S
Ducted A/C System	S	S	S	S
Crowned and Layered Vacuum Bonded Fiberglass Roof	S	S	S	S
Vacuum Bonded 3" Floor w/ Tubular Frame	S	S	S	S
Gel Coated Vacuum Bonded Aluminum Tube w/ Fiberglass & Block Foam Insulation	S	S	S	S
Sidewalls	S	S	S	S
One Piece 1/2" Structure Wood Flooring	S	S	S	S
Block Foam Polystyrene Insulation	S	S	S	S
In Wall Channeled Drains for A/Cs	S	S	S	S
Tubular Steel Firewall w/ Polystyrene Insulation	S	S	S	S
Auxiliary LP Supply, Quick Connect (Passenger Side)	S	S	S	S
Two Piece Rear Ladder	S	S	S	S
82" Interior Ceiling Height	S	S	S	S
30" Mid-entry Entrance Door w/ Exterior Assist Handle	S	S	S	S
LED Marker Lights	S	S	S	S
<b>ELECTRICAL STANDARDS</b>				
50A Service w/ Auto Transfer Switch & 30' Power Cord	S	S	S	S
6kW Onan Diesel Generator w/ Manual Slide Tray	S	S	S	S
Electronic Battery Disconnect Switch	S	S	S	S
Remote Generator Start Switch (In Dash & Bedroom)	S	S	S	S



## MOONSTONE KHAKI

FLOORPLAN	34A	340BH	360RB	38C
<b>FLOORPLAN</b>				
Multi-Plex Lighting	S	S	S	S
Dimmer Control Lighting Throughout	S	S	S	S
LED Ceiling Light Package	S	S	S	S
Driver & Passenger LED Ceiling Map Lights	S	S	S	S
Individual Reading Lights Bed Overhead	S	S	S	S
Cosmetic Bathroom Lighting	S	S	S	S
Decorative Wall & Dinette Lighting w/ Applicable	S	N/A	S	S
Auxiliary Engine Start Switch at Dash	S	S	S	S
2000w Pure Sine Wave Inverter/Charger	S	S	S	S
Auto Generator Start Control	S	S	S	S
Four (4) Six Volt House Batteries	S	S	S	S
Two (2) Master Electric Shut Off Switches	S	S	S	S
Led Porch & Patio Lights	S	S	S	S
Easy Read 12v Circuit House Load Center	S	S	S	S
Solar Panel Controller w/ Roof Prep	S	S	S	S
Automotive Chassis Fuse Panel	S	S	S	S
<b>PLUMBING STANDARDS</b>				
Variable Speed Constant Pressure Water Pump	S	S	S	S
Individual Zoned Hot/Cold Manifold Water Supply System	S	S	S	S
4-way Water Management Valve	S	S	S	S
Bath - Solid Surface Under Mount Sink	S	S	S	S
Kitchen - Stainless Steel Under Mount Sink	S	S	S	S
One Piece Fiberglass Shower w/ Tempered Door & Skylight	S	S	S	S
Whole House Water Filter	S	S	S	S
Black Water Tank Flush System	S	S	S	S
Kitchen-Single Lever Faucet w/ Pull-out Sprayer	S	S	S	S
Double Lever Lavatory Faucets	S	S	S	S
Porcelain China Bowl Toilet w/ Foot Flush	S	S	S	S
Techma Macerator Toilet (Rear Bath)	N/A	N/A	S	S
Clean-easy Exterior Shower Hose	S	S	S	S
Monitor Panel in Water Bay Compartment	S	S	S	S
360 Roof Vent Caps	S	S	S	S
<b>DRIVER/PASSENGER AREA STANDARDS</b>				
One Piece Windshield	S	S	S	S
Power Front Day/Night Shade	S	S	S	S
Manual Passenger & Driver Window	S	S	S	S
Night Shades	S	S	S	S
Fog Lights	S	S	S	S
6" Dash Radio w/ Integrated Color Back-up and Side Camera Package w/ Navigation	S	S	S	S
Wrap Around Cockpit w/ 6 Gauges	S	S	S	S



## MOONSTONE PUTTY

## STONECREST KHAKI

## STONECREST PUTTY

FLOORPLAN	34A	340BH	360RB	38C
Driver 360 Degree Swivel and Recline Seat w/ 6-Way Power Adjustment	S	S	S	S
Passenger 360 Degree Swivel w/ Recline Seat	S	S	S	S
Leatherette Driver/Passenger Seat	S	S	S	S
Lighted Step Well	S	S	S	S
Cockpit table between Driver/Passenger Seats	S	S	S	S
Two (2) Defroster Fans w/ High and Low Settings	S	S	S	S
Driver/Passenger Cup Holders	S	S	S	S
Multiple USB Charging Ports	S	S	S	S
Automotive Dash AC/heater w/ Deluxe Controls	S	S	S	S

### ENTERTAINMENT STANDARDS

40" LED TV, Living Room	S	S	N/A	N/A
32" LED TV, Living Room	N/A	N/A	S	S
32" LED TV, Bedroom	N/A	N/A	S	S
28" LED TV, Bedroom	S	S	N/A	N/A
32" LED TV, Exterior	S	S	S	S
19" LED TV, (2) Each Bunk w/ Easy Access HDMI Jack	N/A	S	N/A	S
Sound Bar w/ Integrated Sub & Bluetooth	S	S	S	S
Roof Mount Winegard Trav'ler Satellite Prep	S	S	S	S
Cable TV Prep	S	S	S	S
High Definition Cat6 Matrix Signal Distribution	S	S	S	S
Hi-Definition Digital TV Antennae w/ Signal Strength Indicator	S	S	S	S
Upconverting DVD Player	S	S	S	S

### INTERIOR STANDARDS

12"X 24" Vinyl Tile Throughout	S	S	S	S
Hardwood Cabinetry & Slideout Fascia	S	S	S	S
Raised Panel Hardwood Cabinet Doors	S	S	S	S
Hidden Hinges and Bar Pull Style Cabinet Hardware	S	S	S	S
Carpeted Living Room and Dining Slide-outs	S	S	S	S
Window Valances	S	S	S	S
Visionary Hide-A-Bed Sofa	S	N/A	S	S
Soft touch sofa	S	S	N/A	N/A
Polished Solid Surface Kitchen/Dinette C-tops w/ Flush Mount Sink and Stove Covers	S	S	S	S
Decor Laminate on All Other Countertops	S	S	S	S
Soft Close Ball Bearing Drawer Guides in Kitchen	S	S	S	S
Full Extension Ball Bearing Metal Drawer Guides	S	S	S	S

FLOORPLAN	34A	340BH	360RB	38C
Galley Storage Compartment for Range and Sink Covers	S	N/A	S	S
Kitchen Pantry	S	N/A	S	S
Bi-fold Doors w/ Bunk Beds	N/A	S	N/A	S
"Soft Touch" Dream Booth Dinette w/ Storage Underneath	S	S	S	S
"Soft Touch" Padded Ceiling	S	S	S	S
Roller Style Day/Night Shades	S	S	S	S
Dresser Drawers and Wardrobe Cabinets	S	S	S	S
72" x 80" King Pillow Top Bed w/ Decor Bedding	N/A	N/A	S	N/A
60" x 80" Queen Pillow Top w/ Bedspread and Decorative Pillows	S	S	N/A	S
Decorative Padded Headboard	S	S	S	S
Bed Night Stands and Overhead Cabinetry	S	S	S	S
Mirrored Medicine Cabinets	S	S	S	S
Towel Bar, Toilet Paper Holder & Towel Ring	S	S	S	S

### APPLIANCE STANDARDS

15,000 BTU w/ Heat Pump (front), 15,000 BTU A/C (rear)	S	S	S	S
Holding Tank Heat Pads	S	S	S	S
*Continuous Flow Tankless Gas Hot Water Heater	S	S	S	S
35,000 BTU Furnace	S	S	N/A	N/A
42,000 BTU Furnace	N/A	N/A	S	S
30" OTR Convection Microwave Oven	S	S	S	S
2 Door Residential Refrigerator	S	S	S	S
Sealed 3-burner Stainless Recessed Cook Top	S	S	S	S
Power Fan in Bathroom w/Rain Cover	S	S	S	S
Maxxair in Galley w/ Wireless Remote Control w/ Cover	S	S	S	S
Washer/dryer Prep	S	N/A	S	S

### OPTIONS

Stackable Washer/Dryer	O	N/A	O	O
Electric Easy-Bed, cockpit Area	O	O	O	O
Plank Wood Vinyl Flooring	O	O	O	O
Theater Seating w/Twin Sleepers ILO	O	N/A	N/A	N/A
Visionary HAB Sofa				

### SAFETY STANDARDS

110 GFI Protected Circuits	S	S	S	S
Carbon Monoxide Detector	S	S	S	S
LP Gas Detector	S	S	S	S

FLOORPLAN	34A	340BH	360RB	38C
Smoke Alarm	S	S	S	S
Egress Window's	S	S	S	S
Surface Mounted Fire Extinguisher	S	S	S	S

**GVWR (Gross Vehicle Weight Rating)** - is the maximum permissible weight of the unit when fully loaded. It includes all weights, inclusive of all fluids, occupants, cargo, optional equipment and accessories. For safety and product performance do NOT exceed the GVWR.

**UVW (Unloaded Vehicle Weight)\*** - is the typical weight of the unit as manufactured at the factory. It includes all weight at the unit's axle(s), including full fuel, all fluids and LP Gas. The UVW does not include cargo, fresh potable water, additional optional equipment or dealer installed accessories.

\*Estimated Average based on standard build optional equipment.

**CCC (Cargo Carrying Capacity)\*\*** - is the amount of weight available for fresh potable water, cargo, passengers, additional optional equipment and accessories. CCC is equal to GVWR minus UVW. Available CCC should accommodate fresh potable water (8.3 lbs per gallon). Before filling the fresh water tank, empty the black and gray tanks to provide for more cargo capacity.

\*\* Estimated average based on standard build optional equipment

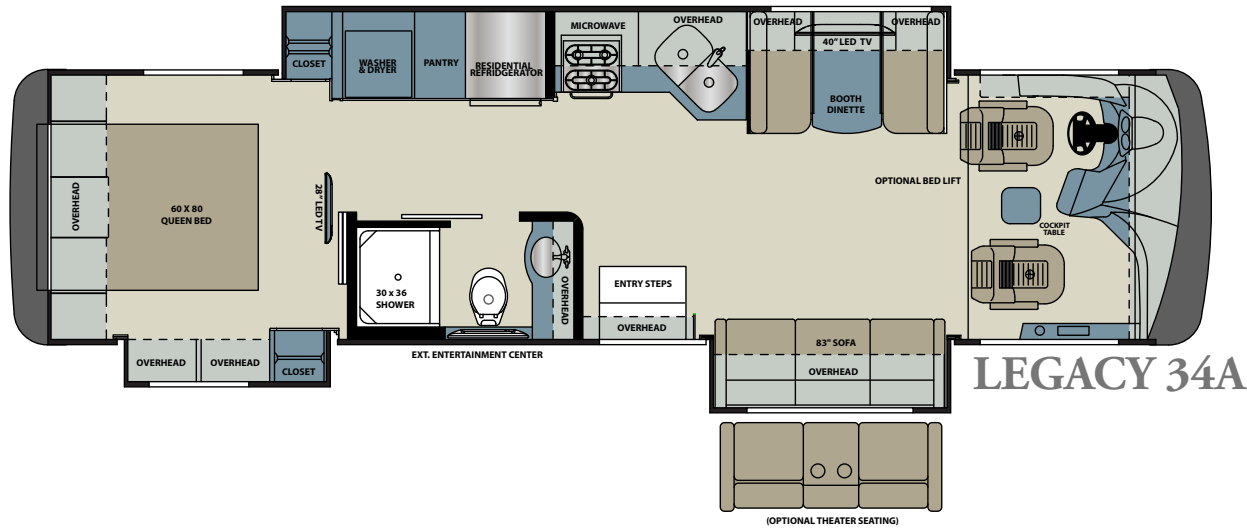
Each Forest River RV is weighed at the manufacturing facility prior to shipping. A label identifying the unloaded vehicle weight of the actual unit and the cargo carrying capacity is applied to every Forest River RV prior to leaving our facilities.

The load capacity of your unit is designated by weight, not by volume, so you cannot necessarily use all available space when loading your unit.

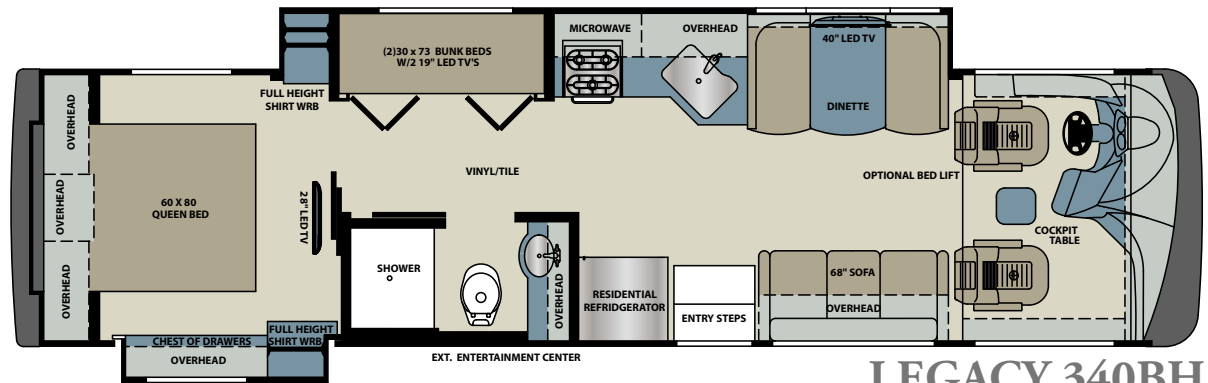
Actual towing capacity is dependent upon your particular loading and towing circumstances, which includes the GVWR, GAWR and GCWR as well as adequate trailer brakes. Please refer to the Operator's Manual of your vehicle for further towing information.



# FLOORPLANS AND SPECIFICATIONS



LEGACY 34A

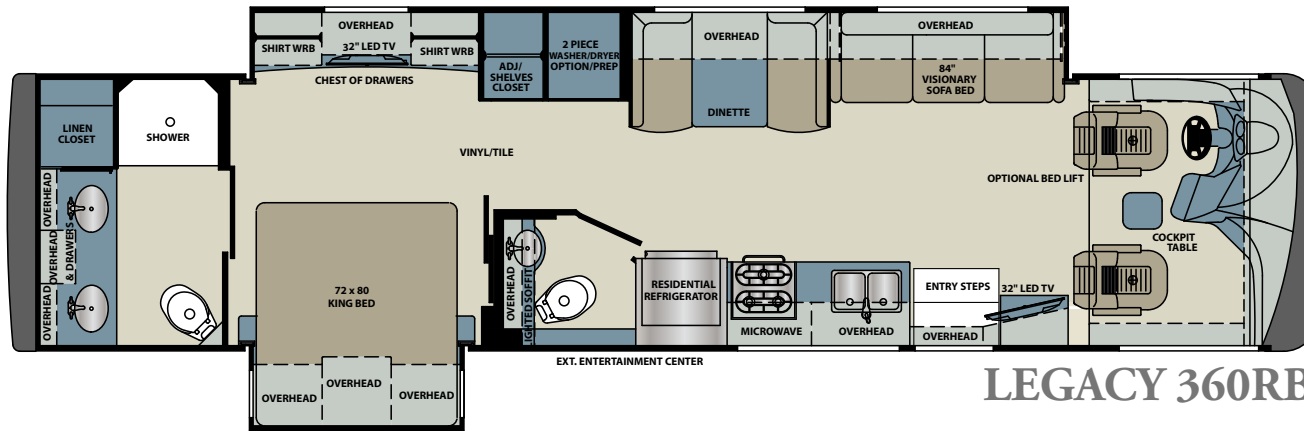


LEGACY 340BH

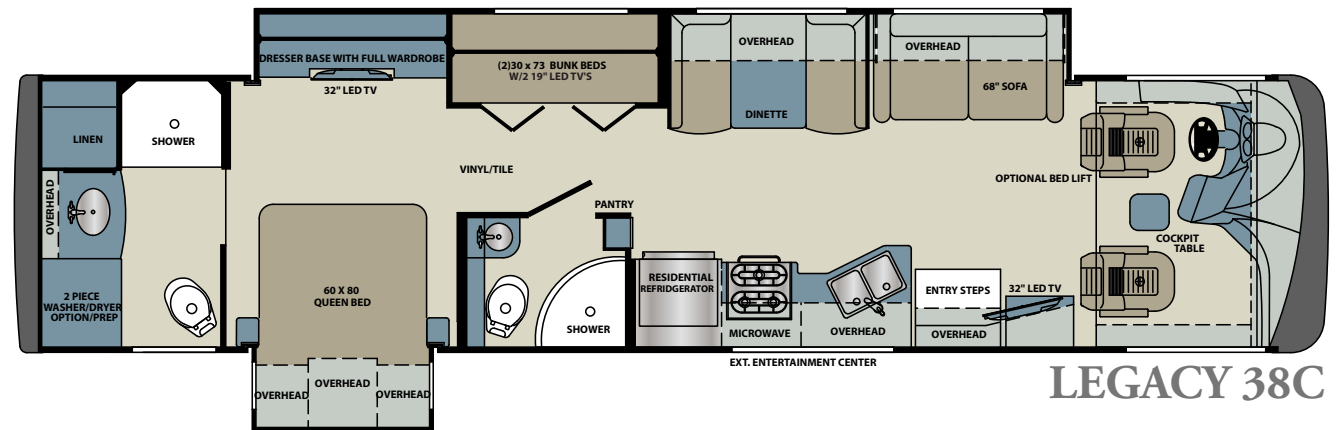
## LEGACY SPECIFICATIONS

Floorplan	Length* (Feet)	GVWR (Lbs.)	GCWR (Lbs.)	GAWR Front (Lbs.)	GAWR Rear (Lbs.)	Wheelbase (Inches)	Height* (Feet)	Width* (Inches)	Basement storage* (Cu. Ft.)	Awning (Feet)	Fresh Tank (Gal.)	Gray Tank (Gal.)	Black Tank (Gal.)	LP Tank	Furnace (BTU's)	TRUMA Hot Water Heater
34A	36' 2"	27,910	32,910	10,410	17,500	208"	12' 4"	100"	110'	10' 4"	86	44	44	24.5	35,000	Continuous
340BH	36' 2"	27,910	32,910	10,410	17,500	208"	12' 4"	100"	110'	18' 0"	86	44	44	24.5	35,000	Continuous

# Legacy



LEGACY 360RB



LEGACY 38C

## LEGACY SPECIFICATIONS

Floorplan	Length* (Feet)	GVWR (Lbs.)	GCWR (Lbs.)	GAWR Front (Lbs.)	GAWR Rear (Lbs.)	Wheelbase (Inches)	Height* (Feet)	Width* (Inches)	Basement storage* (Cu. Ft.)	Awning (Feet)	Fresh Tank (Gal.)	Gray Tank (Gal.)	Black Tank (Gal.)	LP Tank	Furnace (BTU's)	TRUMA Hot Water Heater
360RB	39' 10"	27,910	32,910	10,410	17,500	252"	12' 4"	100"	152'	18' 0"	86	44	44	24.5	42,000	Continuous
38C	39' 10"	27,910	32,910	10,410	17,500	252"	12' 4"	100"	152'	18' 0"	86	44	44	24.5	42,000	Continuous

# Legacy

CHOOSE YOUR LEGACY.



## BEAUTIFUL INSIDE AND OUT

ATTENTION TO DETAIL HAS NEVER LOOKED SO GOOD. THE OUTSIDE OF THE LEGACY LOOKS MORE LIKE AN EXPENSIVE PIECE OF ART THAN A MOTORHOME WITH ITS FOUR COLOR FULL BODY PAINT AND CLEAR COAT FINISH. ON THE INSIDE THE ART CONTINUES WITH PROFESSIONALLY DESIGNED INTERIORS THAT FEATURE HANDMADE CABINETRY AND CUSTOM MADE FURNITURE. LIFE REALLY DOES IMITATE ART WITH THE LEGACY.

**GVWR (Gross Vehicle Weight Rating)** - is the maximum permissible weight of the unit when fully loaded. It includes all weights, inclusive of all fluids, occupants, cargo, optional equipment and accessories. For safety and product performance do NOT exceed the GVWR.

**GCWR (Gross Combined Weight Rating)** - Is the maximum permissible loaded weight of your motor home and any towed trailer or towed vehicle. Actual GCWR of this vehicle may be limited by the sum of the GVWR and the installed hitch receiver maximum capacity rating; see hitch rating label for detail.

**GAWR (Gross Axle Weight Rating)** - is the maximum permissible weight, including cargo, fluids, optional equipment and accessories that can be safely supported by each axle.

**UVW (Unloaded Vehicle Weight)\*** - is the typical weight of the unit as manufactured at the factory. It includes all weight at the unit's axle(s), including full fuel, all fluids and LP Gas. The UVW does not include cargo, fresh potable water, additional optional equipment or dealer installed accessories.

\*Estimated Average based on standard build optional equipment.

**CCC (Cargo Carrying Capacity)\*\*** - is the amount of weight available for fresh potable water, cargo, passengers, additional optional equipment and accessories. CCC is equal to GVWR minus UVW. Available CCC should accommodate fresh potable water (8.3 lbs per gallon). Before filling the fresh water tank, empty the black and gray tanks to provide for more cargo capacity.

\*\* Estimated average based on standard build optional equipment.

Each Forest River RV is weighed at the manufacturing facility prior to shipping. A label identifying the unloaded vehicle weight of the actual unit and the cargo carrying capacity is applied to every Forest River RV prior to leaving our facilities.

The load capacity of your unit is designated by weight, not by volume, so you cannot necessarily use all available space when loading your unit.

Actual towing capacity is dependent upon your particular loading and towing circumstances, which includes the GVWR, GAWR and GCWR as well as adequate trailer brakes. Please refer to the Operator's Manual of your vehicle for further towing information.



**PRE-DELIVERY INSPECTION FACILITY**  
20,000 square feet of quality assurance. The bare essentials for a premium product. This state-of-the-art facility gives immediate daily feedback to production for quality assurance in every unit built.



Forest River, Inc. encourages our customers to purchase their Forest River products from a local dealership whenever possible for the following reasons:

It is the goal of Forest River, Inc. that all of our RV owners fully enjoy the RV experience and that customer satisfaction meets or exceeds their expectations!



- 1) Forest River, Inc. dealers are independently owned and operated businesses so priority service and scheduling is at their discretion and is often provided to customers that purchased their unit at that dealership.
- 2) Purchasing locally allows customers to establish meaningful relationships with a dealer, enhancing the RV experience through assistance with product questions, user tips or RV regulations for your state or country, and much more!
- 3) Canadian customers must meet requirements to bring an RV purchased out of the country to their home. These requirements may involve additional inspections and certifications, taxes and fees. Your local Canadian Dealer is a professional at meeting these requirements.
- 4) Scheduling timely warranty repairs and adjustments through a local dealership provides far greater flexibility and convenience to you, the customer!

**Forest River, Inc. - Diesel Motorized Division**  
1800 West Hively Avenue, Elkhart, IN 46515  
(574) 522-3693 [www.forestriverinc.com/legacy](http://www.forestriverinc.com/legacy)

All information contained in this brochure is believed to be accurate at the time of publication. However, during the model year, it may be necessary to make revisions and Forest River, Inc., reserves the right to make all such changes without notice, including prices, colors, materials, equipment and specifications as well as the addition of new models and the discontinuance of models shown in this brochure. Therefore, please consult with your Forest River dealer and confirm the existence of any materials, design or specifications that are material to your purchase decision.



**Learn More**  
Scan this barcode using a QR Reader on your smart phone to learn more about Forest River.



A Berkshire Hathaway company.

**LAMESA RV**  
EXPERIENCE LIFE  
[www.lamesarv.com](http://www.lamesarv.com)  
800-496-8778

