



LASTING DEPENDABILITY | FAMILY FAVORITE | FEATURE PACKED

[www.fleetwoodrv.com](http://www.fleetwoodrv.com)

# SOUTHWIND

2018 FLEETWOOD CLASS A GAS

2018 FLEETWOOD SOUTHWIND

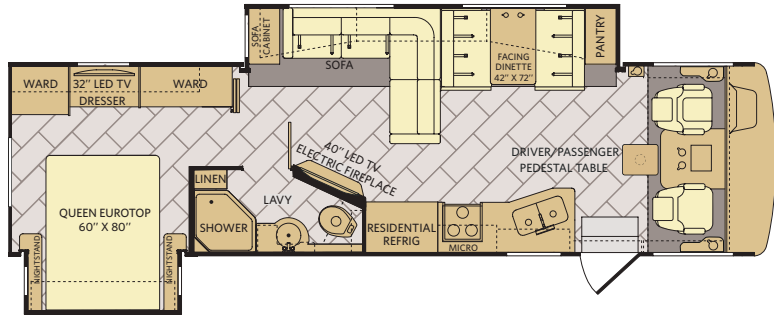


OUR VEHICLES CONNECT AND PROTECT  
PEOPLE AROUND THE WORLD EVERYDAY.  
[www.revgroup.com](http://www.revgroup.com)

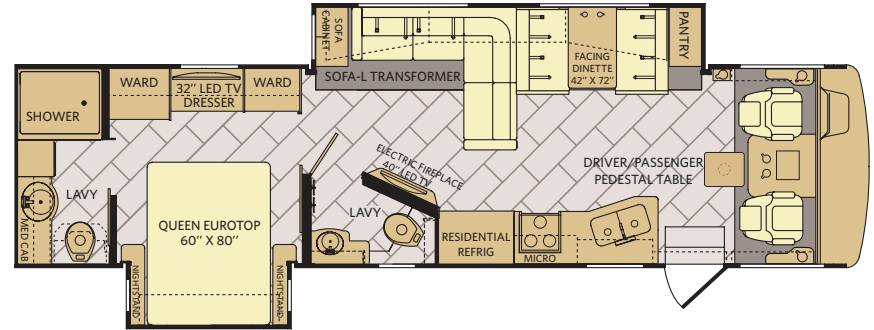


# FLOORPLANS & EXTERIOR OPTIONS

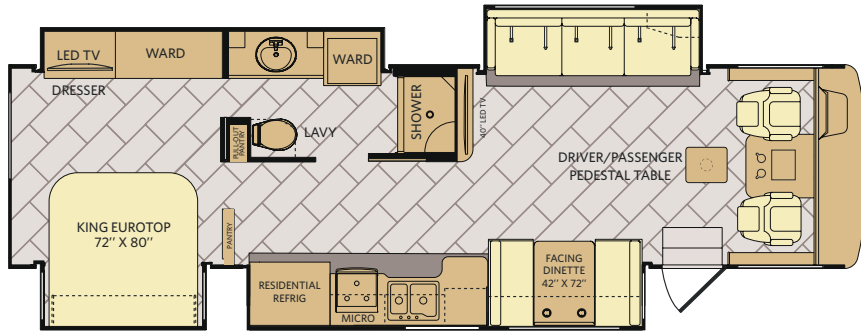
**34C** Options: 113, 126, 220, 833, 852



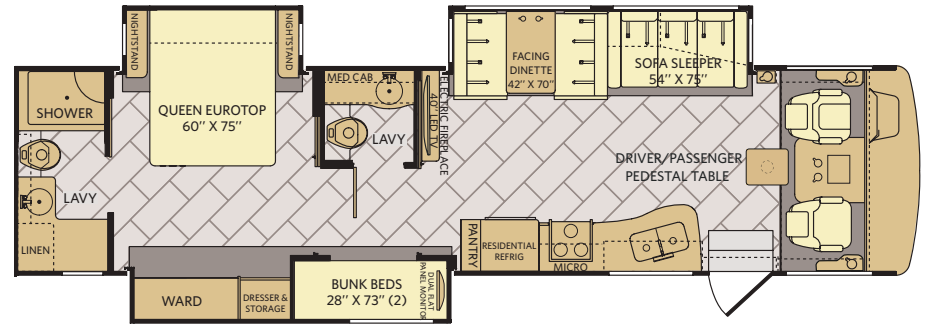
**35K** Options: 113, 126, 220, 833, 852




**36P** Options: 113, 131, 208, 220, 833

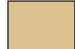


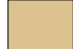
**37H** Options: 113, 126, 220, 833, 852

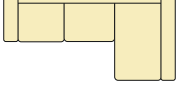



## Available Options

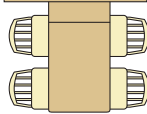
- 

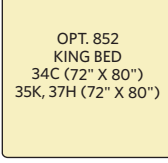
OPT. 113  
3-BURNER  
COOKTOP  
W/OVEN
- 

OPT. 126  
WASHER  
/DRYER
- 

OPT. 131  
STACKABLE W/D
- 

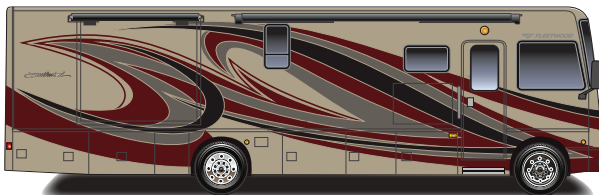
OPT. 208  
L-SOFA W/FREE-STANDING  
DINETTE  
W/CRENZA (36P ONLY)
- 

OPT. 220  
HIDE-A-LOFT™  
DROP-DOWN QUEEN  
BED MEMORY FOAM  
MATTRESS 52" X 72"
- 

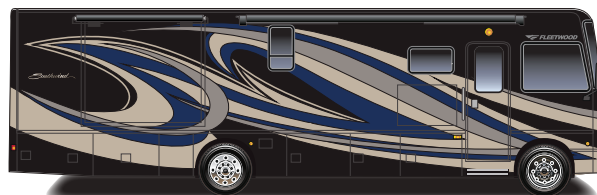
OPT. 833  
FREE-STANDING  
DINETTE  
WITH CRENZA
- 

OPT. 852  
KING BED  
34C (72" X 80")  
35K, 37H (72" X 80")

## Gateway



## Polar



## Ridge



# DÉCOR OPTIONS

## CHASSIS

MODEL	34C	35K	36P	37H
Wheelbase (inches)	208"	228"	252"	242"
Front GAWR (lbs) <sup>2</sup>	8,000	8,000	9,000	9,000
Rear GAWR (lbs) <sup>2</sup>	15,000	15,000	15,500	15,500
GCWR (lbs) <sup>3</sup>	26,000	26,000	30,000	30,000
GVWR (lbs) <sup>1</sup>	22,000	22,000	24,000	24,000
Hitch Rating Weight(lbs) <sup>†</sup>	5,000	5,000	5,000	5,000
Tongue Weight (lbs)*	500	500	500	500
Fuel Capacity (gal)	80	80	80	80

## POWER PLATFORM® CHASSIS

Model: Ford®

Engine: 6.8L Triton V10

Transmission: Ford®, 6-Speed, Automatic w/Overdrive

Alternator: 175 Amp

Torque: 460 lb.-ft. @ 3,000 RPM

Horsepower: 320 HP @ 3,900 RPM

## DIMENSIONS AND CAPACITIES

MODEL	34C	35K	36P	37H
Overall Length (inches) <sup>4</sup>	34' 3"	36' 3"	36' 3"	37' 3"
Overall Height (with A/C)	12' 10"	12' 10"	12' 10"	12' 10"
Overall Width (maximum) <sup>5,6</sup>	102"	102"	102"	102"
Interior Height (maximum)	84"	84"	84"	84"
Interior Width (maximum)	96"	96"	96"	96"
Patio Awning Width (feet & inches)	17'	17'	15'	17'
Interior Storage (cu. ft.)	123	126	144	146
Exterior Storage (cu. ft.)	160	180	138	170
Fresh Water Holding Tank (gal)	100	100	100	100
Grey Water Holding Tank (gal)	58	58	46	58
Black Water Holding Tank (gal)	42	42	30	42
Appliance Propane Tank (gal) (WC) <sup>7</sup>	25	25	25	25
Water Heater Tank (gal)	10	10	10	10

# America's Favorite Motorhomes

Mile after mile, decade after decade, more families trust Fleetwood. The open road is our proof. With more Fleetwood motorhomes on the road today than any other manufacturer, our brand prides itself on building dependable products that help families reconnect one journey at a time – over and over again. At Fleetwood, we constantly redefine value because understanding your every need is just the start to delivering peace-of-mind at every turn.



REV GROUP



Fleetwood RV is part of REV Recreation Group, a division of REV Group, Inc., a family of 29 industry-leading motor vehicle brands. At REV Group, we innovate, design and build products that connect and protect thousands of people every day—our trusted vehicles are engineered with the utmost rigor and precision to deliver the highest levels of performance, reliability, durability and safety.

YOUR LOCAL DEALER



## DISCLAIMERS

1. GVWR (Gross Vehicle Weight Rating) is the maximum permissible weight of this fully loaded motor home. The GVWR is equal to or greater than the sum of the (UVW) unloaded vehicle weight plus the (OCCC) occupant cargo-carrying capacity.
  2. GAWR (Gross Axle Weight Rating) is the maximum permissible loaded weight a specific axle is designed to carry.
  3. GCWR (Gross Combined Weight Rating) is the value specified by the motor home manufacturer as the maximum allowable loaded weight of this motor home with its towed vehicle. Towing and braking capacities may be different. Refer to Fleetwood and chassis manufacturer's manuals for complete information.
  4. Length measured from front bumper to rear bumper (excludes accessories).
  5. Excludes safety equipment and awnings.
  6. Motor homes feature a body width over 96" which will restrict your access to certain roads. Before purchasing, you should research any state and/or province road laws which may affect your usage.
  7. Tank manufacturer's listed water capacity (WC). Actual propane capacity is 80% of water listing as required by the safety code.
- † The chassis manufacturer recommends the installation of a supplemental brake control system to activate the brakes on the vehicle or trailer you are towing. Hitch receiver ratings expressed are maximum for the hitch receiver installed and may require the purchase of additional equipment that is dependent on the weight of the towed load. Consult with hitch receiver manufacturer for further information.
- \* UVW and OCCC are found on the label containing the federal certification tag in each RV.
- \*\* Seatbelts and locations are shown in the brochure for display purposes only. Actual numbers and locations will vary by model.
- \*\*\* All 2018 REV Recreation Group motorhomes include a limited one year/15,000-mile coach warranty and three-year/45,000-mile structural warranty, whichever occurs first, and is fully transferable for the first 12 months.

## FLEETWOOD MOTORHOME ASSOCIATION

As a Fleetwood RV owner, you're invited to become a member of the Fleetwood Motorhome Association (FMA). Becoming a member is the perfect way to meet other Fleetwood owners who love to travel across America and share in the RV lifestyle. Visit the FMA website at [www.fma4fun.org](http://www.fma4fun.org) to learn more and join the fun.

## CONTACT US

To locate a dealer near you, visit our website at [www.fleetwoodrv.com](http://www.fleetwoodrv.com) or call 1-800-322-8216. We can also be contacted at Fleetwood RV Customer Relations, P.O. Box 1007, Decatur, IN 46733.

**IMPORTANT—PLEASE READ:** Product information, photography and illustrations included in this publication were as accurate as possible at the time of printing. For further product information and changes, please visit our website at [www.fleetwoodrv.com](http://www.fleetwoodrv.com) or contact your local Fleetwood RV dealer. Prices, materials, design and specifications are subject to change without notice. All weights, fuel, liquid capacities and dimensions are approximate. Fleetwood RV has designed its recreational vehicles to provide a variety of uses for its customers. Each vehicle features optimal seating, sleeping, storage and fluid capacities. The user is responsible for selecting the proper combination of loads (i.e., occupants, equipment, fluids, cargo, etc.) to ensure that the vehicle's capacities are not exceeded.

[www.fleetwoodrv.com](http://www.fleetwoodrv.com)

©2017 REV Group, Inc. Printed in the USA. Inventory Control Number SW18B1, 08/17. Model Year 2018, First Edition.