

# Allegro RED<sup>®</sup>





COCKPIT



LIVING AREA





# TAKE A POWER TRIP

The 2019 Allegro RED may be the MVP of the Tiffin line-up. Always a top-seller, this coach delivers incredible luxury, quality, and value at an entry-level price range. Powered by a Rear Engine Diesel (RED), the Allegro RED is a pleasure to drive, rewarding you with each press of the accelerator. You'll also be transported by its comfortably spacious living areas, with 7' ceilings, and four slide-out rooms. From bumper to bumper, this model is packed with standard features considered luxury upgrades by other RV manufacturers. With the Allegro RED, you'll have the power to get away anytime you want.





BED/BATH



MASTER BEDROOM





## MASTER SUITE

While away from home, you'll enjoy the comfort of sleeping in your own bed every night on a luxury memory foam mattress, available in standard queen-sized or optional king. Open side windows for a refreshing cross breeze. Custom-built hardwood cabinets offer a high-end ambiance, complementing designer fabrics and finishes. Master bath features a one-piece molded fiberglass shower, a superior, easy-to-clean material for RV travel.



MASTER BATHROOM



MASTER BEDROOM STORAGE



Woodwork is created from solid hardwood by Red Bay master craftsmen. The multitude of cabinets, drawers, and closets adds up to more storage than many larger size models.



## MAIN COMPARTMENT

The Allegro RED enables you to personalize living areas for the space you need. The modern transitional décor is purposefully neutral to complement your style. A host of upscale amenities enhances the feeling of home, from the energy-efficient LED lighting to luxurious Ultraleather furniture and handsome hardwood cabinetry.



DINETTE



LIVING AREA



SOFA BED

All interiors shown are 37 BA with Amber Glazed Cabinets and Batik Interior. To learn more about all of our décor and floor plan options, visit [tiffinmotorhomes.com](http://tiffinmotorhomes.com).





The cool brightness of LED lighting illuminates interiors, using a fraction of the energy of incandescent bulbs to preserve the coach's battery life.



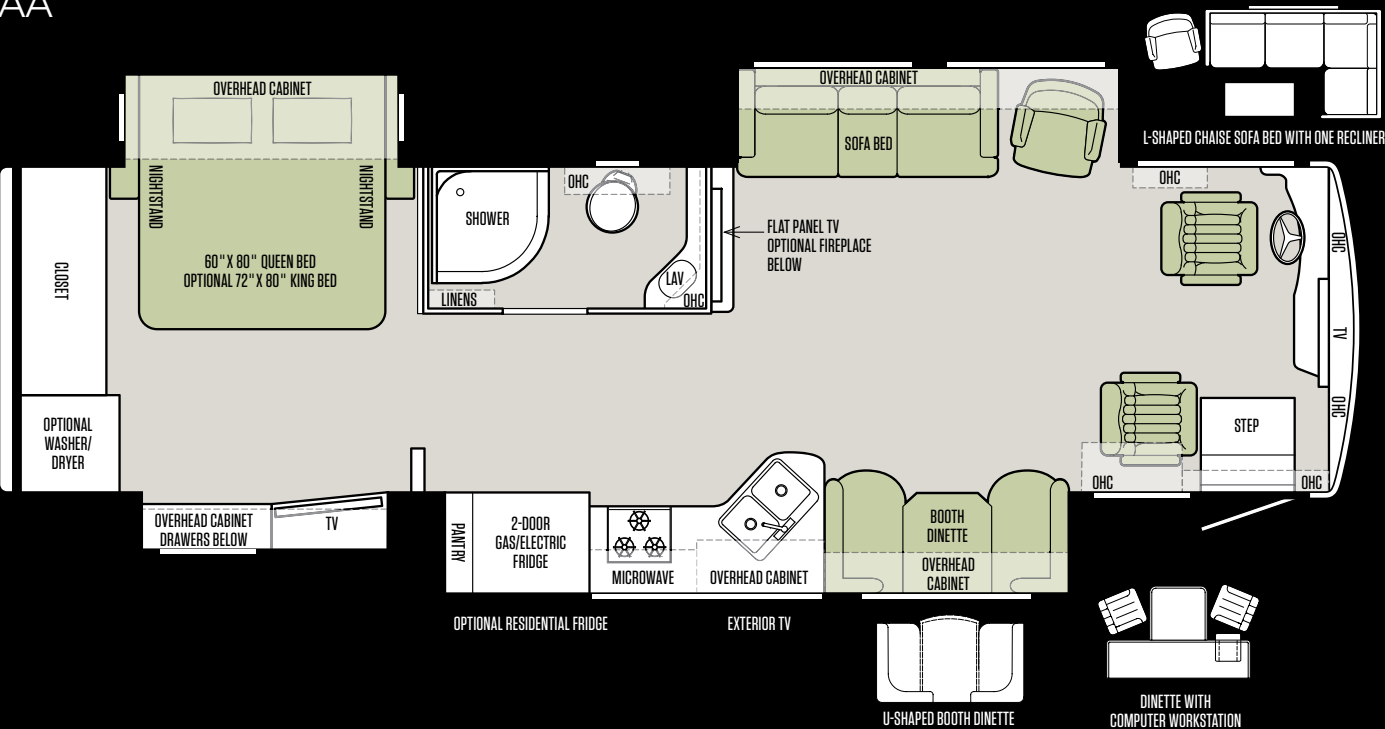
KITCHEN COOKTOP AND GALLEY WINDOW



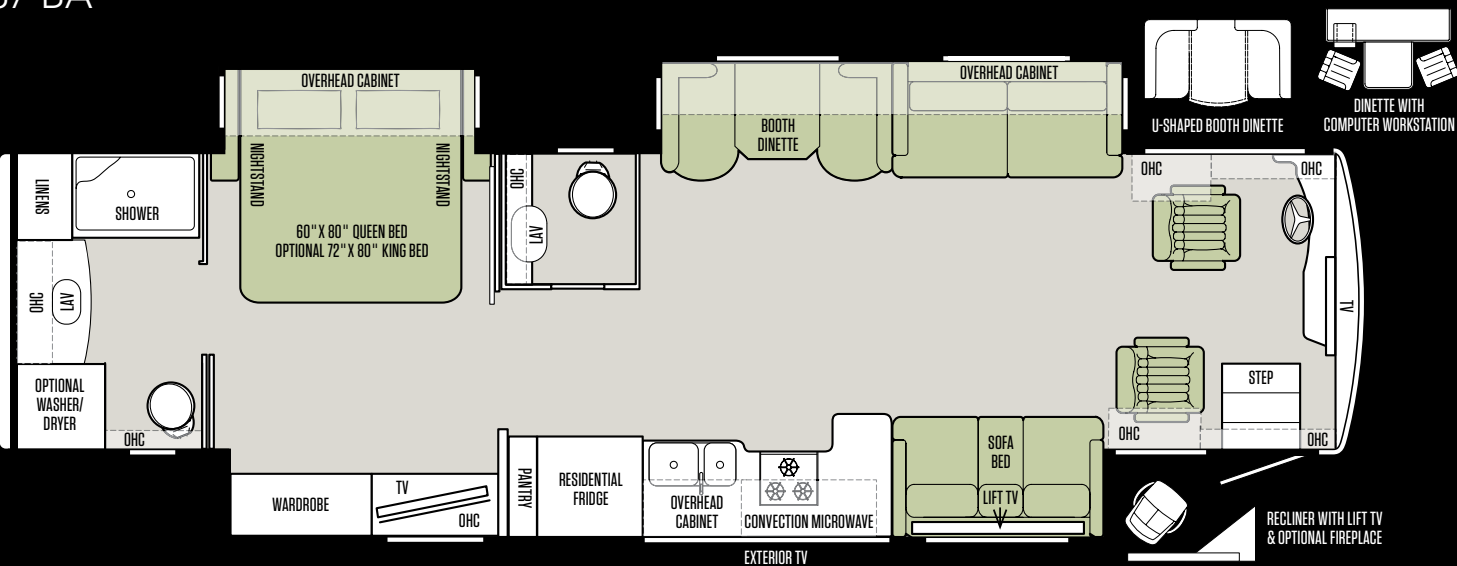
KITCHEN SINK

FLOOR PLANS

33 AA



37 BA



All options may not be available in every model. Because of progressive improvements, specifications, standard and optional equipment are subject to change without notice or obligation. For a complete and up-to-date list of available options and specifications, visit [tiffinmotorhomes.com](http://tiffinmotorhomes.com)





The design of every Tiffin floor plan must meet four essential criteria:  
Maximum space. Optimal organization. Relaxation plus. Elegant atmosphere.  
MORE plans offer your family the most comfortable layout for life on the road.

37 PA



Note: If optional furniture combinations are selected, window locations may vary from diagram shown.



INTERIOR DÉCOR

CABINETS



AMBER GLAZED



ENGLISH CHESTNUT

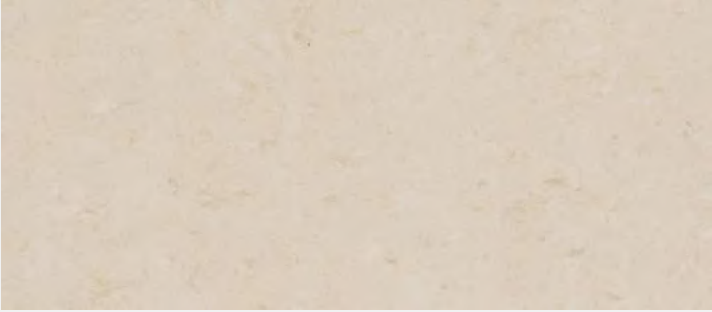


MOCHA

FLOORING



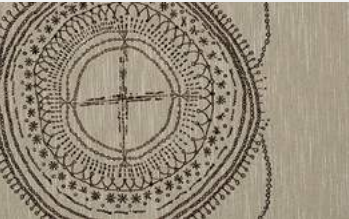
STANDARD TILE



OPTIONAL TILE

BATIK

LIVING AREA



PILLOWS



VALANCE

KITCHEN



BACKSPLASH

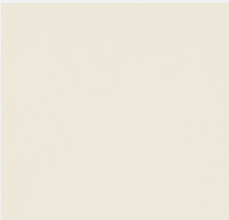


COUNTERTOP

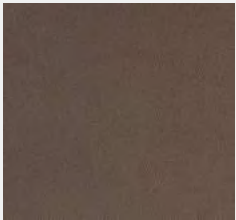
ULTRALEATHER OPTIONS



BROWN SUGAR



IRISH LACE



MOLASSES

BEDROOM





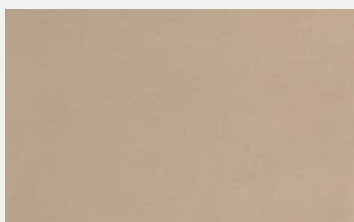
Make your experience on the road all your own. Express yourself by choosing one of our three designer inspired décor packages including cabinet finishes, flooring and fabric textures. In the 2019 RED, you'll be able to travel in style wherever you go.

## CRÈME FRAÎCHE

### LIVING AREA



PILLOWS



VALANCE

### KITCHEN

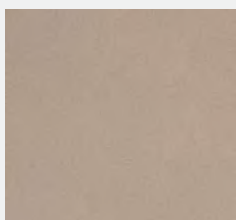


BACKSPLASH

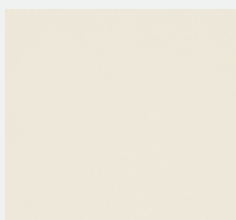


COUNTERTOP

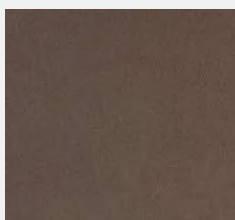
### ULTRALEATHER OPTIONS



BROWN SUGAR



IRISH LACE



MOLASSES

### BEDROOM

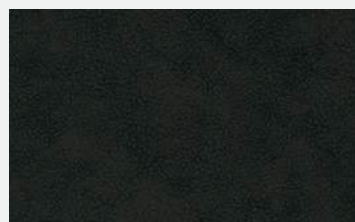


## LUXE

### LIVING AREA



PILLOWS

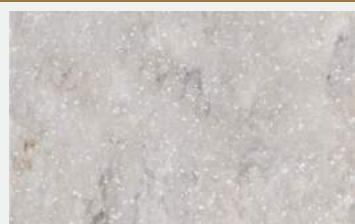


VALANCE

### KITCHEN

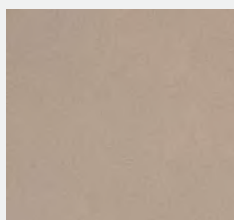


BACKSPLASH

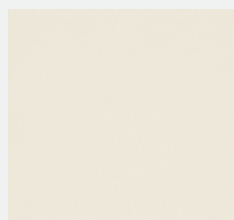


COUNTERTOP

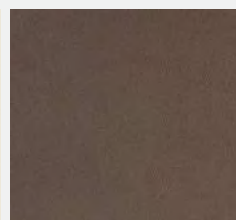
### ULTRALEATHER OPTIONS



BROWN SUGAR



IRISH LACE



MOLASSES

### BEDROOM



Because of progressive improvements, specifications, standard and optional equipment are subject to change without notice or obligation.

For a complete and up-to-date list of available options and specifications, visit [tiffinmotorhomes.com](http://tiffinmotorhomes.com).



## PREMIUM PAINT SYSTEM

Our eight-step full-body paint system features premium grade paints sealed with four layers of superclear coat with ultraviolet protection. An additional layer of scratch-resistant plastic coating protects the front of the coach, stairwell, and entry door lock.



CRIMSON



NASA



LAPIS SKY



SUNLIT SAND



MAROON CORAL



WHITE MAHOGANY

To learn more about our premium paint system or for a complete and up-to-date list of available options and specifications, as well as information on Tiffin's full line of motorhomes, visit [tiffinmotorhomes.com](http://tiffinmotorhomes.com).

## 2019 SPECIFICATIONS



### AUTOMOTIVE

#### STANDARD ON ALL MODELS:

- Raised Rail Chassis Frame
- Full Air Brakes
- Four Aluminum Wheels
- Air Ride Suspension
- Exhaust Brake

### CHASSIS OPTIONS

FREIGHTLINER® REAR ENGINE DIESEL CHASSIS:	33 AA	37 BA	37 PA
Cummins ISB 6.7-liter Electronic Diesel, Turbocharged, Aftercooled Engine	S	S	S
Allison 3000 MH 6-speed Automatic Transmission with Lock-up	S	S	S
Peak HP 360 HP @ 2,600 RPM	S	S	S
Peak Torque (lb – Ft. Max Net) 800 @ 1,800 RPM	S	S	S
GAWR — Front	12,000 lb	12,000 lb	12,000 lb
GAWR — Rear	20,000 lb	20,000 lb	20,000 lb
GVWR	32,000 lb	32,000 lb	32,000 lb
GCWR	42,000 lb	42,000 lb	42,000 lb
Wheel Base	198"	234"	252"
Tire Size	275/80R22.5	275/80R22.5	275/80R22.5
Fuel Tank (Gallons) — Dual Fuel Fill	100	100	100
DEF Tank* (Gallons)	13	13	13
Alternator Amps	160	160	160

\* Diesel Exhaust Fluid (DEF) is the active component used in Selective Catalytic Reduction (SCR) engines to reduce nitrogen oxide emissions by 90% to meet EPA standards.

### WEIGHTS AND MEASURES

OVERALL:	33 AA	37 BA	37 PA
Overall Length (Approximate**)	35' 2"	38' 6"	39'
Overall Height with Roof Air (Maximum)	12' 10"	12' 10"	12' 10"
Interior Height	84"	84"	84"
Overall Width**	101"	101"	101"
Interior Width	96"	96"	96"
Fresh Water (Gallons)	90	90	90
Black Water (Gallons)	50	50	50
Grey Water (Gallons)	70	70	70
LPG Tank (Gallons; can only be filled to 80% capacity)	24	24	24
Basement Storage (Cubic Feet — Approximate)	83.75	119	119
Minimum Garage Height	14'	14'	14'
Hitch Rating***	10,000 lb	10,000 lb	10,000 lb

\*\* The approximated coach width and length does not include side-view mirrors and rear ladders.

\*\*\* Maximum Trailer Weight is dependent on the loading and towing variables which include the GVWR, GAWR, and GCWR, as well as adequate trailer brakes. Please refer to the operator's manual of your vehicle chassis for further towing information.



2019 SPECIFICATIONS

EXTERIOR

STANDARD ON ALL MODELS:			
<ul style="list-style-type: none"><li>Fiberglass Front and Rear Caps</li><li>Tinted One-piece Windshield</li><li>8.0 kw Onan® Generator</li><li>Horizontal Mounted Wipers</li><li>Heated Power Mirrors</li><li>Exterior Patio Light</li><li>Power Patio Awning</li><li>Automatic Entry Door Awning</li><li>Awning(s) over Slide-outs</li><li>Two Low Profile Roof ACs with Heat Pumps (15,000 BTUs)</li><li>Double Electric Step</li><li>1/4" Thick Single Pane Windows</li></ul>	<ul style="list-style-type: none"><li>Convenient Access Doors with Gas Shocks</li><li>Single Handle Lockable Storage Door Latches</li><li>Heated Holding Tank Compartment</li><li>Four 6 V House Batteries</li><li>Digital TV Antenna</li><li>Cable TV Ready</li><li>50 Amp Service</li><li>Black Holding Tank Flush System</li><li>Exterior Rinse Hose/Shower</li><li>Gravity Water Fill</li><li>Color Back-up Monitor</li><li>Undercoating</li></ul>	<ul style="list-style-type: none"><li>Roof Ladder</li><li>External Tripod Satellite Hook-up</li><li>Exterior Storage Compartment Lights</li><li>Chrome Mirror Heads with Integrated Turn Signal Cameras</li><li>Full-body Paint</li><li>Hydraulic Automatic Leveling Jacks</li><li>110 V Exterior Receptacle</li><li>Front Cap Protective Film</li><li>Exterior Flat Panel TV</li><li>Air Horns</li><li>Mud Flap with Diffuser</li></ul>	

AVAILABLE OPTIONS:	33 AA	37 BA	37 PA
In-motion Satellite Dish*	O	O	O
Exterior Slide-out Tray**	O	O	O
Prep for One or Two Solar Panels	O	O	O
CB Antenna	O	O	O
Winegard Connect	O	O	O
Prep for Winegard® TRAV'LER***	O	O	O

\* High-definition programming is not available on a dome satellite antenna unless you subscribe to DISH Network®.

\*\* Exterior Slide-out Tray and Central Vacuum Cleaner cannot be optioned together on the 33 AA.

\*\*\* In-motion Satellite Dish and Prep for Winegard TRAV'LER cannot be optioned together on the 33 AA.

INTERIOR

STANDARD ON ALL MODELS:			
<ul style="list-style-type: none"><li>High Gloss Raised Panel Hardwood Cabinet Doors</li><li>Solid Wood Cabinet Fascias</li><li>Soft Touch Vinyl Ceiling</li><li>Flat Panel TV in Entertainment Center</li><li>Ceramic Tile Flooring in Living Room Area and Bath Area</li><li>Treated Carpet and Fabrics</li><li>Ball Bearing Drawer Slides</li></ul>	<ul style="list-style-type: none"><li>Solar and Privacy Shades</li><li>Power Roof Vents</li><li>Tank Level Monitor System</li><li>Smoke Detector</li><li>10-gallon DSI Gas/Electric Water Heater</li><li>Power Step Well Cover</li><li>2000 Watt Sine Wave Inverter</li></ul>	<ul style="list-style-type: none"><li>Carbon Monoxide Detector</li><li>LED Lighting</li><li>Extraordinaire™ AC System</li><li>LPG Leak Detector</li><li>Home Theater Surround Sound System (Includes DVD Player)</li></ul>	

AVAILABLE OPTIONS:	33 AA	37 BA	37 PA
Stacked Washer/Dryer	O	O	O
Central Vacuum Cleaner****	O	O	O
Cabinets			
Amber Glazed Solid Cabinet Doors and Drawer Fronts	O	O	O
English Chestnut Solid Cabinet Doors and Drawer Fronts	O	O	O
Mocha Solid Cabinet Doors and Drawer Fronts	O	O	O
Fabric Suites			
Batik	O	O	O
Crème Fraîche	O	O	O
Luxe	O	O	O
Floor Tiles			
Prospective Tile Floor	S	S	S
Pietre Del Norde Alaska Tile Floor	O	O	O
Leathers			
Toscana Brown Sugar Ultraleather	O	O	O
Toscana Irish Lace Ultraleather	O	O	O
Toscana Molasses Ultraleather	O	O	O

\*\*\*\* Exterior Slide-out Tray and Central Vacuum Cleaner cannot be optioned together on the 33 AA.

All options may not be available on every model. Because of progressive improvements, specifications, standard and optional equipment are subject to change without notice or obligation. For a complete and up-to-date list of available options and specifications, visit [tiffinmotorhomes.com](http://tiffinmotorhomes.com).

Visit us on the web for more information on the 2019 Allegro RED and all 2019 Tiffin Motorhomes, along with the latest product and specification updates at [tiffinmotorhomes.com](http://tiffinmotorhomes.com).

## LIVING AREA/DINETTE

AVAILABLE OPTIONS:	33 AA	37 BA	37 PA
Ultraleather Booth Dinette on Passenger Side	S	NA	S
Ultraleather Booth Dinette/Sleeper on Driver Side	NA	S	NA
Ultraleather Hide-A-Bed Sofa and One Recliner on Driver Side	S	NA	S
Ultraleather DE Sofa/Sleeper and Lift TV on Passenger Side	NA	S	NA
Ultraleather L-shaped Sofa and One Recliner on Driver Side	O	NA	O
Ultraleather Air Coil Sofa on Driver Side	NA	S	NA
Ultraleather U-shaped Dinette on Passenger Side	O	NA	O
Ultraleather U-shaped Dinette (Non-sleeper) on Driver Side	NA	O	NA
Ultraleather Recliner and Lift TV on Passenger Side	NA	O	NA
Dinette with Computer Workstation on Passenger Side	O	NA	O
Dinette with Computer Workstation on Driver Side	NA	O	NA
Fireplace Below Flat Panel TV in Entertainment Center	O	NA	O
Fireplace on Passenger Side (only available with Ultraleather Recliner with Lift TV)	NA	O	NA

## KITCHEN

STANDARD ON ALL MODELS:			
<ul style="list-style-type: none"> <li>Double Bowl Kitchen Sink with Single Lever Satin Nickel Faucet</li> <li>Solid Surface Backsplashes</li> <li>Panoramic Galley Window</li> <li>Solid Surface Galley Countertop</li> <li>3-burner Cooktop with Convection Microwave</li> </ul>			
AVAILABLE OPTIONS:	33 AA	37 BA	37 PA
Oven with Convection Microwave	O	O	O
4-door Gas/Electric Refrigerator with Icemaker	NA	NA	NA
2-door Gas/Electric Refrigerator with Pantry and Panels	S	NA	NA
Residential Refrigerator	O	S	S

## BEDROOM

STANDARD ON ALL MODELS:			
<ul style="list-style-type: none"> <li>Wardrobe with Automatic Light</li> <li>Carpeted Flooring</li> <li>Bedroom Ceiling Fan</li> <li>Bed Comforter with Throw Pillows</li> <li>Memory Foam Queen Mattress (60" x 80")</li> <li>Flat Panel TV</li> <li>Solar/Privacy Shades</li> </ul>			
AVAILABLE OPTIONS:	33 AA	37 BA	37 PA
Memory Foam King Bed Mattress (72" x 80")	O	O	O

## BATHROOM

STANDARD ON ALL MODELS:			
<ul style="list-style-type: none"> <li>Medicine Cabinet</li> <li>Molded One-piece Fiberglass Shower</li> <li>Roof Vent Fan</li> <li>Skylight and LED Light in Shower</li> <li>Solid Surface Vanity Top</li> </ul>			

## COCKPIT

STANDARD ON ALL MODELS:			
<ul style="list-style-type: none"> <li>Tilt and Telescoping Steering Wheel</li> <li>Power Solar and Privacy Windshield Shades</li> <li>Adjustable Seatbelt Brackets</li> <li>Wood Drawers in Dash</li> <li>House Battery Disconnect Switch</li> <li>Ultraleather Power Driver and Passenger Seats</li> <li>Lighted Instrument Panel</li> <li>USB Dash Receptacle</li> <li>Satellite-ready Radio (Subscription Required)</li> <li>CD Player and AM/FM Stereo</li> <li>Fire Extinguisher</li> <li>Overhead Flat Panel TV</li> <li>12 V Dash Receptacle</li> <li>Manual Solar and Privacy Shades on Side Windows</li> </ul>			
AVAILABLE OPTIONS:	33 AA	37 BA	37 PA
In-dash Navigation System	O	O	O
Ultraleather Power Passenger Seat with Footrest	O	O	O





## LET YOUR JOURNEY BEGIN

Tiffin Motorhomes is proud to be one of the few family-owned manufacturers in the industry, and it makes a significant difference in how our company operates. For starters, with the Tiffin name on every coach, building a superior motorhome isn't just our occupation. It's a matter of personal pride, a pursuit we have committed our lives to perfecting.

We know it's not just about where a coach will take you, but the experience you take from the journey. That's why every Tiffin motorhome is made to move you.

### TIFFIN LIMITED WARRANTY

---

10

YEAR CONSTRUCTION  
LIMITED WARRANTY

---

5

YEAR DELAMINATION  
LIMITED WARRANTY

---

1

YEAR  
LIMITED WARRANTY

---

1

YEAR COACH  
ROADSIDE SERVICE

---

ONGOING  
CUSTOMER  
SUPPORT



[TIFFINMOTORHOMES.COM](http://TIFFINMOTORHOMES.COM)

---

FOR PARTS & SERVICE CALL  
256/356.8661

---

 /TIFFINMOTORHOMES

 /TIFFINMOTORHOMES

 /TIFFINMOTORHOME

 /TIFFINMOTORHOME

Some interior furnishings not included. Unless where noted, all content ©2019 Tiffin Motorhomes, Inc. Allegro®, Allegro Breeze®, Allegro Red®, Phaeton®, Allegro Bus®, Zephyr®, Wayfarer®, Roughing It Smoothly®, Open Road®, PowerGlide®, and Pusher® are registered trademarks of Tiffin Motorhomes, Inc. All rights reserved. For all information concerning the limited warranty provided by Tiffin, please refer to the full written limited warranty set forth on the Tiffin website or held by our authorized dealerships.

**LaMESA RV & CAN**  
LaMesaRV.com  
800-496-8778