

2019 | DISCOVERY LXE

CLASS A DIESEL



LASTING DEPENDABILITY | FAMILY FAVORITE | FEATURE PACKED



www.fleetwoodrv.com



DISCOVERY LXE 40G
Shown in Rhine

EXPLORATION WITH AN UPGRADE

The Discovery LXE is Fleetwood RV's most luxurious Class A Diesel Motorhome. For 2019, we take luxury to the next level. Before even going inside you'll find an integrated roofline Girard® patio awning and exterior entertainment center with a 48" LED TV. Inside you're greeted by residential polished porcelain tile, front zone heated flooring, and beautiful residential style furniture. Opt for the Technology Package on this Class A Diesel, and you'll get numerous advancements, like a 160-watt solar panel and the Mobile Eye collision avoidance system. It is easy to see why this ultramodern Class A Diesel has been one of the best-selling Class A Diesel motorhomes for over 20 years.

YOU WANT EVERY SINGLE ADVANTAGE WHEN IT COMES TO YOUR RV.

At REV, we don't settle for anything less than the best, and neither should you. That's why every Fleetwood RV motorhome features industry-leading materials and construction. With these REV brands, you'll also find the ultimate in RV convenience and strength, like our auto hydraulic leveling system, Vacu-Bond™ construction, Dryseal™ edge coating, and much more – all coming standard to elevate your travels.

Each of these advantages have been engineered to deliver superior reliability, durability, and most of all, customer satisfaction.

1. Power Bridge™ (Diesel Motorhomes)

REV's Power Bridge chassis is exclusive and provides customers with superior handling; cavernous storage, enormous holding tank capacities and a better ride. With its modern-engineers all-steel structure, the Power Bridge creates a true side-to-side, front-to-rear and belly-to-beltline bridging platform that is custom designed for each Class A Diesel floorplan. This is a vast improvement over standard rail technology, and it's the perfect pairing with the Freightliner XCM chassis.

**Construction modifications on Power Bridge

2. Auto Hydraulic Leveling System

More reliable than electric leveling jacks, our automatic hydraulic leveling system is reliable, durable and easy to use. The operating procedure is clean and easy, the results are smooth, simple leveling at the push of a button.

3. Powerlock System™ (Interlocking Floors, Walls, and Ceiling)

REV's interlocking aluminum extrusion wall-joint system integrates floor, sidewall, and roof assembly into one locked-together overall structure for long-term performance and durability.

4. Powerframe System™

(Precision-Welded Aluminum Walls, Floor, and Roof Structures)

Our wall, floor, and roof frames are designed and engineered to fit precisely with interlocking extrusions on the steel-reinforced bridge structure. No "hammer-it-to-fit" stick and frame construction here.

5. Vacu-Bond™ Construction

Vacuum-bonded assemblies combine industry-leading materials and construction for a straight and flat integrated wall that's better suited to the rigors of the road. It applies up to 415,000-pounds of vacuum pressure to our already strong welded-aluminum sidewall frame, bead-foam panel insulation, Tuff-Coat fiberglass skin, and inner wall materials for over 30 minutes – far exceeding industry standards.



Five Layer Wall

Our Vacu-Bond™ walls feature an adhesive bonding process that applies up to 415,000-pounds of vacuum pressure to the welded-aluminum sidewall frame, bead-foam panel insulation, and Tuff-Coat fiberglass skin for more than 30 minutes – far exceeding industry standards.



Weld Joint

Every joint found in the frame of your Fleetwood motorhome has been welded by a certified welder to add strength to the frame, unlike the stick and nail construction found on other RVs.



Ceiling Interlock

You won't find stick and frame construction here. Our exclusive extruded aluminum allows the ceiling to "lock" with the wall structure, creating one solid aluminum assembly.



Floor Interlock

To give your RV's structure a precise, seamless fit, our extruded aluminum, an exclusive feature, "locks" the wall structure and floor together to create a solid aluminum shell that maximizes overall strength.

6. Solid Bead-Foam Engineered Fit Insulation™

In some RVs, you may find air holes in the insulation. Not in a REV RV. Using exact measurements, bead-foam is placed between every structural support to eliminate any gaps and provide insulation from both exterior temperature and noise.

7. Dryseal™ Edge Coating

This water-wicking coating is applied to every edge of the walls and windows for long-lasting durability. It helps to seal out moisture, prevent delamination, swelling, and mold.

8. Tuff-Coat Fiberglass Walls

REV RV seeks to use the highest quality exterior fiberglass on our Class A gas and Class A diesel products. The impressive tuff-coat fiberglass skin is extremely weather resistant and UV resistant. Most importantly, there is no wood substrate on the exterior of the REV Class A products. Delamination is a major concern for manufacturers using the composite or wood backer in their walls. Not at REV RV, our exterior skin has no composite and no wood, just the fiberglass.

9. Tuff-Ply Engineered Vinyl Roofing

As the name implies, this "Tuff-Ply" or Thermoplastic Poly Olefin is as tough as it comes and is very low maintenance. Tuff-Ply is flexible, pliable and easily conforms with the roofline radius with little to no stress at the awning rail connection seam. Tuff-Ply is a clean, non-streaking, non-chalking engineered vinyl material that is easy to maintain.

10. Tuff-PEX™ Plumbing System

It's a complete system of flexible, yet durable, Oetiker tubing, fittings, and stainless-steel rings – all with sub-zero ratings. Colors of red for hot and blue for cold make servicing simple.

11. Tapered Slideout Box Tops

Our slideouts include a tapered roofline that directs water away from the RV to provide an additional level of moisture protection. There are also multiple bead-seals, as well as our debris awning protection.

12. Seamless Metallic Slide Room Underbelly

What's underneath is just as important as what's on top. Our metallic slide bottom goes above the standard wood bottom for protection against the elements, and adds yet another level of durability.

13. Roto-Cast Molded Luggage Bays

Instead of the industry-standard plywood, these molded bays are more durable, look great, and can be washed with a hose.

14. Dedicated Full-Length Metallic A/C Ducting

Instead of cut-out foam channels, REV provides insulated A/C ducting that runs the entire length of your motorhome with carefully placed outlets in the most occupied places to assure cool comfort.

15. Sure-Glide Flush Floor Aluminum Slide Transition Ramp

Pinewood ramps that absorb moisture, crack and rot are the industry standard. Not here! Our aluminum ramps will stay straight, extend and retract easily, and will provide you with years of trouble-free operation.

16. Automotive Inspired Bonded Windshield

REV RV's bonded windshields surpass the standard "floating" windshield in durability. The entire perimeter of glass is bonded to a frame that provides more support and is much more conducive to the demands of the road.

17. Bus-Style Cargo Doors

We far exceed the industry standards of exposed seals and hinges with a more durable design taken from our luxury motorcoaches.

18. Premium Full-Body Paint

Just like the cars, trucks, motorcycles and most any other automotive product produced today, our motorhomes receive the same premium painted protection on the exterior. Unlike the cars of today, our motorhomes are typically more than just one color. The REV RV family of painted motorhomes receive up to four different colors and as many as two separate coats of clear. Our REV RV family of Class A motorhomes are painted and clear coat protected in a state-of-the-art facility located right on the REV manufacturing campus. The results are easy to see...Better protection, better looks, and higher resale value after years of enjoyment.

19. Radiused and Cambered Entry Door

The industry standard square corner door allows for too much wind noise. So, we use a higher-end solution that fits your motorcoach's body better, latches more securely, and seals tighter.

20. Hide-A-Loft™ Overhead Bed System

A REV RV exclusive, our Hide-A-Loft™ Bed System offers a capacity of up to 500 lbs. The bed includes a queen mattress and is incredibly comfortable and easy to operate.

21. Dealer Partnership

REV's dealer relationship goes beyond the expected. We listen to our dealers and are able to provide you with a motorhome you can be proud to own and that fits your needs. This partnership allows the dealer to be a bridge between the customer and REV Group.

Build your own Discovery LXE at <https://www.fleetwoodrv.com/build-your-own>



DISCOVERY LXE Shown in Rhine

You seek the latest technology, ultimate comfort, upscale styling, handling, and you expect it all in one elite, magnificently designed, economical package. Introducing the 2019 Discovery LXE by Fleetwood.

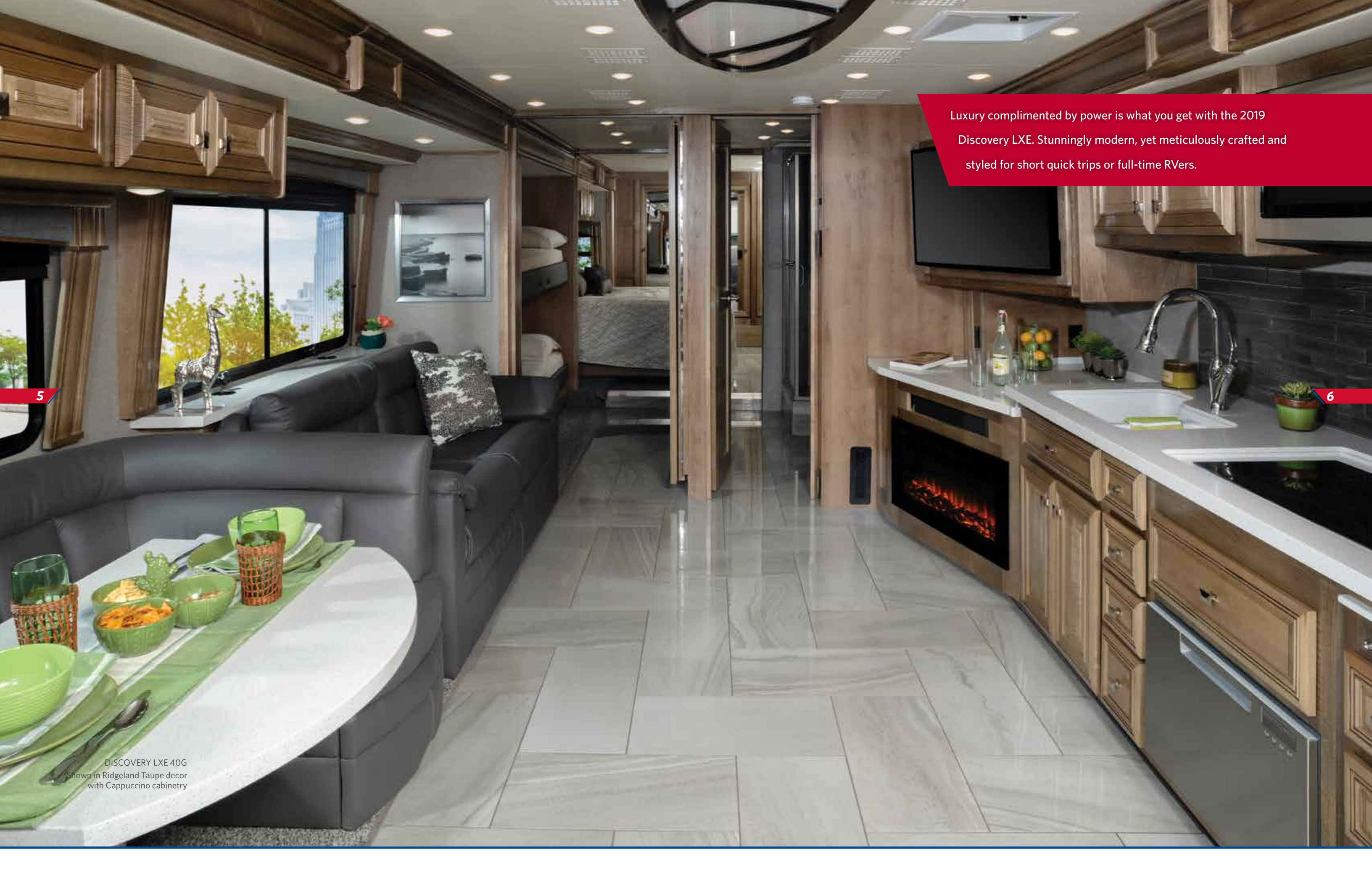
FLEETWOOD RV
www.fleetwoodrv.com



4

DISCOVERY LXE 40G
Shown in El Dorado





Luxury complimented by power is what you get with the 2019 Discovery LXE. Stunningly modern, yet meticulously crafted and styled for short quick trips or full-time RVers.

5

6

DISCOVERY LXE 40G
Shown in Ridgeland Taupe decor
with Cappuccino cabinetry



7

DISCOVERY LXE 40G
Shown in Ridgeland Taupe decor
with Cappuccino cabinetry



8



Shown in Savoy Tan decor





9

DISCOVERY LXE 40G
Shown in Ridgeland Taupe decor
with Cappuccino cabinetry



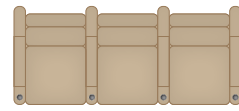
TOP SELLING FEATURES

- 380HP Cummins® w/Allison 3000 Transmission
- Power Bridge chassis V-Ride rear suspension
- Aqua-Hot® heating 400D
- Front zone floor heat
- 12x24 hand-laid porcelain tile flooring
- 48" Exterior entertainment center with soundbar
- Residential refrigerator w/2800W Pure Sine inverter
- Safe-T-View camera system
- Front generator slide
- 15,000 BTU roof A/C's (3)
- Firefly house electronics command controls
- Fischer Paykal drawer style dishwasher optional
- Magnadyne M-10 10" touch screen-stereo w/navigation
- Roofline integrated Girard awning
- Molded fiberglass roof



FLOORPLANS

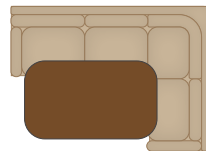
AVAILABLE OPTIONS



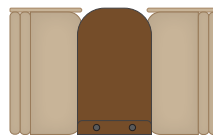
194 THEATRE SEATING (40D)



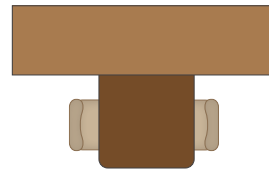
194 THEATRE SEATING



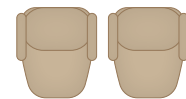
809 L-SHAPED DINETTE (40D)



830 FACING DINETTE (44B, 44H)



833 FREE STANDING DINETTE W/CREDENZA (40M, 44B, 44H)

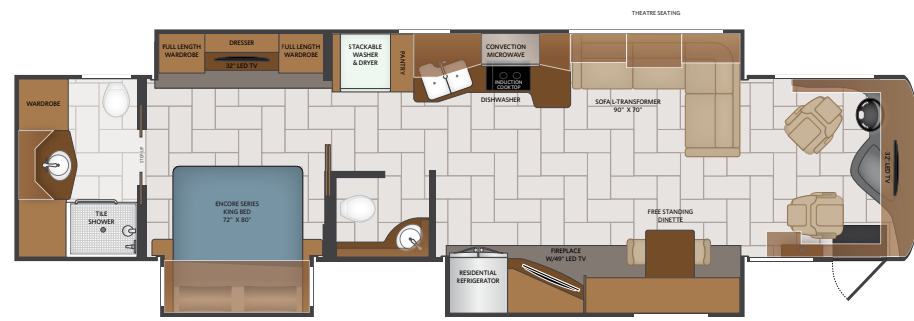


498 DUAL EURO RECLINERS (40M, 44B, 44H)

099	SATELLITE DELETE
111	EXTERIOR FREEZER
194	THEATRE SEATING
272	WINDOW AWNING PACKAGE
345	49" MID-SHIP LED TV
436	CSA-FREIGHTLINER PACKAGE
498	DUAL EURO RECLINERS
563	TECHNOLOGY PACKAGE
809	L-SHAPED DINETTE
830	FACING DINETTE
833	FREE STANDING DINETTE w/CREDENZA
967	2ND FULL BAY 90" S/O TRAY
970	2ND FULL BAY 54" S/O TRAY

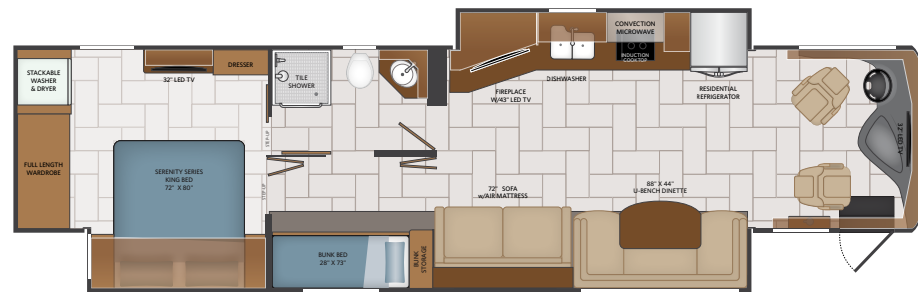
40D

Options: 099, 111, 194, 272, 436, 563, 809, 970



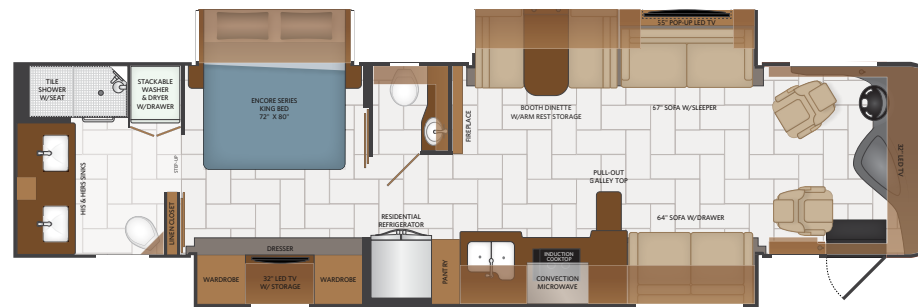
40G

Options: 099, 111, 194, 272, 436, 563, 970



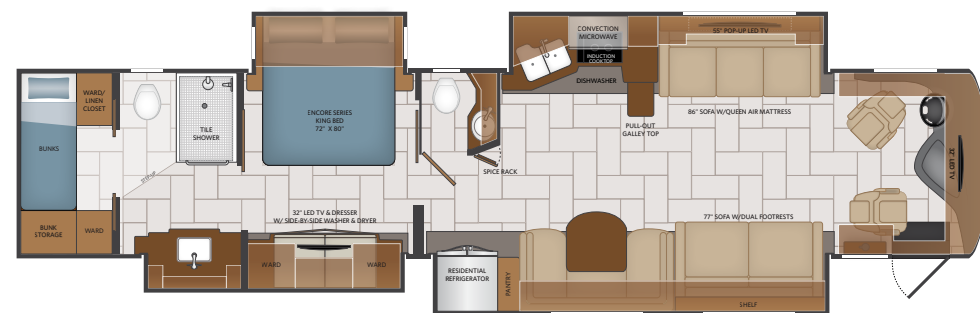
40M

Options: 099, 111, 194, 272, 345, 436, 563, 833, 970



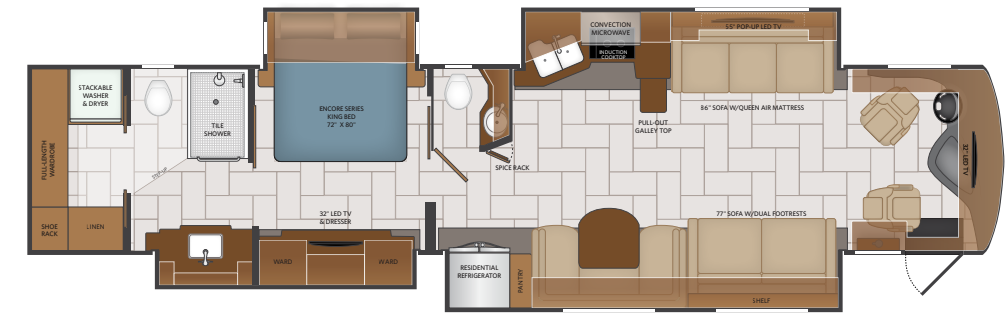
44B

Options: 099, 111, 194, 272, 436, 498, 563, 830, 833, 967



44H

Options: 099, 111, 194, 272, 436, 498, 563, 830, 833, 967



CHASSIS

MODEL	40D	40G	40M	44B	44H
Wheelbase (inches)	276"	276"	263"	309"	309"
Front GAWR (lbs) ²	12,400	12,400	12,400	13,200	13,200
Rear GAWR (lbs) ³	24,000	24,000	24,000	20,000	20,000
Rear Tag GAWR (lbs)	NA	NA	NA	10,000	10,000
GCWR (lbs) ³	46,400	46,400	46,400	52,200	52,200
Hitch Rating Weight (lbs)*	10,000	10,000	10,000	15,000	15,000
Tongue Weight (lbs)	1,000	1,000	1,000	1,500	1,500
Fuel Capacity (gal)	100	100	100	100	100

12

DIMENSIONS AND CAPACITIES

MODEL	40D	40G	40M	44B	44H
Overall Length (inches) ⁴	41' 4"	41' 4"	40' 1"	44' 0"	44' 0"
Overall Height (with A/C)	12' 10"	12' 10"	12' 10"	12' 10"	12' 10"
Overall Width (maximum) ^{5,6}	102"	102"	102"	102"	102"
Interior Height (maximum)	84"	84"	84"	84"	84"
Interior Width (maximum)	96"	96"	96"	96"	96"
Patio Awning Width (feet & inches)	20'	20'	20'	20'	20'
Interior Storage (cu. ft.)	196	196	160	227	227
Exterior Storage (cu. ft.)	182	182	156	190	190
Fresh Water Holding Tank (gal)	100	100	100	100	100
Grey Water Holding Tank (gal)	75	75	75	75	75
Black Water Holding Tank (gal)	50	50	50	50	50
Aqua-Hot 400	S	S	S	S	S

POWER BRIDGE® CHASSIS 44B, 44H

Model: Freightliner® XCM Series
 Engine: Cummins ISL 9L
 Transmission: Allison® 3,000 MH 6-Speed w/Electronic Shifter
 Alternator: Delcom Remy 160 Amp
 Torque: 1,250 lb.-ft. @ 1,400 RPM
 Horsepower: 450HP

POWER BRIDGE® CHASSIS 40D, 40G, 40M

Model: Freightliner® XCM Series
 Engine: Cummins ISL 9L
 Transmission: Allison® 3,000 MH 6-Speed w/Electronic Shifter
 Alternator: Delcom Remy 160 Amp
 Torque: 1,150 lb.-ft. @ 1,400 RPM
 Horsepower: 380HP

EXTERIOR CHOICES



CASTLE



LaMesaRV.com
800-496-8778



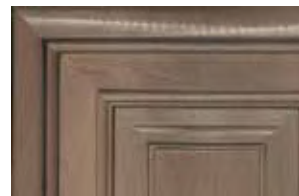
RHINE



SENTINEL

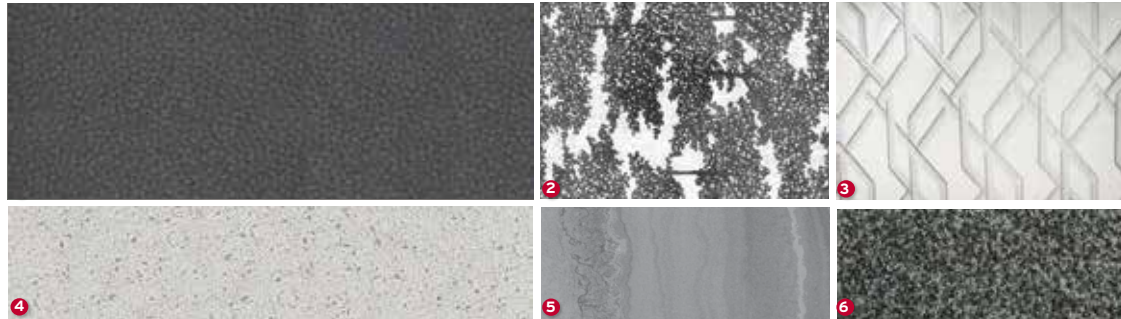
INTERIOR DECOR CHOICES

CELESTIAL GREY



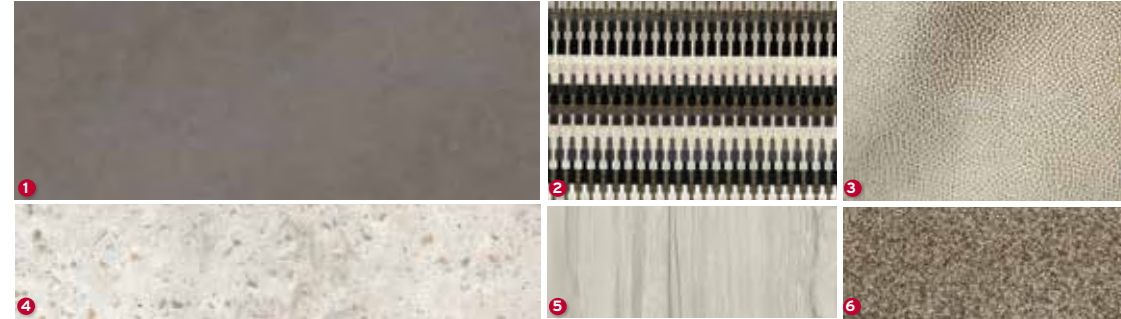
CAPPUCCINO

RIDGELAND TAUPE



GREYSTONE

SAVOY TAN



NOTTINGHAM CHERRY

- 1 SOFA
- 2 LIVING ACCENT
- 3 BEDSPREAD
- 4 COUNTERTOP
- 5 FLOORING
- 6 CARPET

DESIGNER RECOMMENDS THE FOLLOWING INTERIOR AND EXTERIOR COMBINATIONS

Celestial Grey Décor	+	Whispering Wind Cabinetry	+	Rhine or Sentinel Graphics
Ridgeland Taupe Décor	+	Cappuccino Cabinetry	+	Castle or El Dorado Graphics
Savoy Tan Décor	+	Nottingham Cabinetry	+	El Dorado Graphics
Savoy Tan Décor	+	Cappuccino Cabinetry	+	Castle Graphics

Product information, photography and illustrations included in this publication were as accurate as possible at the time of printing.

	40D	40G	40M	44H	44B
One-Piece Front & Rear Fiberglass Cap	S	S	S	S	S
One-Piece Generator Access	S	S	S	S	S
Chrome Power/Heated Mirrors w/ Turn Signals & Side Cameras	S	S	S	S	S
One-piece Windshield w/wipers	S	S	S	S	S
LED Hi/Low Headlights	S	S	S	S	S
Daytime Running Lights	S	S	S	S	S
Fog Lamps	S	S	S	S	S
Slider Driver Window	S	S	S	S	S
Frameless Passenger Window	S	S	S	S	S
Under-Hood Light	S	S	S	S	S
Lower Front Protective Mask	S	S	S	S	S
Dash Inserts - Instrument Panels	S	S	S	S	S
Black Instrument Gauges w/Electronic Information Center	S	S	S	S	S
High-Output Dash Air Cond/Heat	S	S	S	S	S
Air Suspension Deflation System	S	S	S	S	S
Electronic Cruise Control	S	S	S	S	S
Windshield Wipers w/Delay	S	S	S	S	S
Keyless Entry w/Remotes	S	S	S	S	S
Power/Heated Chrome Mirrors Switch	S	S	S	S	S
Utility Service Compartment Switch	S	S	S	S	S
Driver Console w/Lower Storage Bin	S	S	S	S	S
Powerlocks w/Key FOB Control	S	S	S	S	S
Backup Monitor Color 7"	S	S	S	S	S
Sirius/XM Satellite (Requires Subscription)	S	S	S	S	S
Magnadyne Stereo 10" Touch Screen w/AM/FM/CD/DVD/Bluetooth/Navigation/APP Store/WiFi	S	S	S	S	S
Driver & Passenger Chair-Ultra Leather w/Reclining Back, Swivel & 6-way Power Controls	S	S	S	S	S
Seat Belts - Three Point Driver & Passenger w/Adjustable Straps	S	S	S	S	S
12V & USB Accessory Ports	S	S	S	S	S
110-Volt AC Outlet Dash/Passenger Area	S	S	S	S	S
Passenger Armrest w/Solid Surface Top	S	S	S	S	S
Driver/Passenger Cupholders	S	S	S	S	S
Front Power Roller Shades & Blinds	S	S	S	S	S
Driver/Passenger Side Manual Roller Shades & Blinds	S	S	S	S	S
Radio Switch Main/Auxiliary Power	S	S	S	S	S
Battery Disconnect Switch	S	S	S	S	S
Momentary Battery Booster Switch - Connecting Chassis & House Batteries	S	S	S	S	S
Map Lights	S	S	S	S	S
Driver/Passenger Overhead Storage Cabinetry	S	S	S	S	S
Air Horns	S	S	S	S	S
Automatic Leveling Jacks w/Touchpad Controls	S	S	S	S	S
Full Coverage Heavy Duty Undercoating	S	S	S	S	S
Fiberglass Wheel Well Trims	S	S	S	S	S
One-piece Molded Fiberglass Domed Roof	S	S	S	S	S
Awning - Electric Patio Awning w/LED Lighting & Wind Sensor Retract - Girard	S	S	S	S	S
Powered Entrance Awning w/LED Lighting	S	S	S	S	S
Slideout Awning Toppers	S	S	S	S	S
Acrylic Lighted Grab Handle at Entry Door	S	S	S	S	S
Side Swing Aluminum Bus-Style Baggage Doors w/Chrome Handles	S	S	S	S	S
Windows - Tinted Frameless	S	S	S	S	S
LED Patio Lights (Both Sides)	S	S	S	S	S
Porch Light w/Interior Switch	S	S	S	S	S
Automatic Hydraulic Leveling Jacks	S	S	S	S	S
Front/Side/Rear LED Clearance & Marker Lighting	S	S	S	S	S
Exterior Service Station	S	S	S	S	S
Water Filtration System	S	S	S	S	S
Exterior Park Cable & Satellite Hookup	S	S	S	S	S
Seven-Way Round Tow Connection	S	S	S	S	S
Front & Rear Mudflaps	S	S	S	S	S
Rear Underhood Utility Light	S	S	S	S	S
Antenna - Unidirectional King Controls Jack	S	S	S	S	S
Satellite Dish - Prep Roof-Mounting	S	S	S	S	S
Lighted Storage Compartments	S	S	S	S	S
Heated Holding Tank Compartment	S	S	S	S	S
Basement Pass-Through Storage	S	S	S	S	S

	40D	40G	40M	44H	44B
Winegard Satellite Dish in-Motion	S	S	S	S	S
Roof Vent Rain Covers	S	S	S	S	S
Exterior Entertainment Center 48"	S	S	S	S	S
Full Bay 54" SlideTrays - 1st Bay	S	N/A	N/A	N/A	N/A
Full Bay 90" SlideTrays - 1st Bay	N/A	S	S	S	S
Undercarriage LED Lights	S	S	S	S	S
Full Bay 90" SlideTrays - 2nd Bay	N/A	N/A	N/A	O	O
Full Bay 54" SlideTrays - 2nd Bay	O	O	O	N/A	N/A
Power Entry Step Cover	S	S	S	S	S
Solid Surface Interior Entry Step w/LED Accent Lighting	S	S	S	S	S
Battery Disconnect at Passenger Cabinet	S	S	S	S	S
Metal Interior Grab Handle at Entry	S	S	S	S	S
Entry Door Manual Roller Shades/Blinds	S	S	S	S	S
Lighted Stepwell	S	S	S	S	S
Automatic Exterior Entrance Steps	S	S	S	S	S
Sofa - 86" Sofa w/Air Bed	N/A	N/A	N/A	S	S
Sofa - 90"x70" L-Sofa w/Footrest & Jack-knife	S	N/A	N/A	N/A	N/A
Sofa - 72" Sofa w/Air Bed	N/A	S	N/A	N/A	N/A
Sofa - 77" Sofa w/Dual Footrest	N/A	N/A	N/A	S	S
Sofa - 67" Sofa w/Full Air Bed	N/A	N/A	S	N/A	N/A
Sofa - 64" Sofa w/Drawer	N/A	N/A	S	N/A	N/A
Free Standing Dinette w/Credenza	S	O	S	S	S
U-Shape Dinette	N/A	S	N/A	S	S
Electric Fireplace	S	S	S	N/A	N/A
Interior Flat Soft-Touch Vinyl Ceiling	S	S	S	S	S
Polished Porcelain Tile Flooring	S	S	S	S	S
Floor Heat in Living Area	S	S	S	S	S
Full Extension Drawer Guides w/Latches	S	S	S	S	S
Hardwood Cabinetry Throughout	S	S	S	S	S
Hardwood Ceiling Feature Trim w/Lighting	S	S	S	S	S
Coordinating Valance w/Lambrequins	S	S	S	S	S
Manual Day/Night Roller Shades	S	S	S	S	S
Safe-T-View Camera System	S	S	S	S	S
110V/USB Ports Throughout	N/A	N/A	N/A	S	S
Energy Efficient LED 3" Puck Flush Mount Ceiling & Accent Wall Lighting	S	S	S	S	S
Washer/Dryer	S	S	S	S	S
Accent Rope Lighting	S	S	S	S	S
Sleeper Sofa	O	N/A	N/A	N/A	N/A
Dual Recliners	N/A	N/A	N/A	O	O
Theater Seating	O	O	O	O	O
Facing Dinette Booth	N/A	N/A	O	O	O
L-Shape Dinette	O	N/A	N/A	N/A	N/A
FS Dinette w/Credenza	N/A	O	N/A	O	O
Whirlpool Refrigerator - 22 cu.ft. French Door Residential SS	S	S	S	S	S
Two Burner High Output Induction Electric Cooktop (Recessed w/Covers)	S	S	S	S	S
SS Over-the-Range 1000W Convection Microwave	S	S	S	S	S
Dishwasher	S	S	S	S	S
Polished Solid Surface Galley Countertop w/Sink Covers	S	S	S	S	S
Glass Tile Backsplash	S	S	S	S	S
Deep Double Bowl Undermount Gemstone Sink	S	S	S	S	S
Feature Lighting at Galley Top	S	S	S	S	S
Residential Single Handle Faucet w/pullout Sprayer	S	S	S	S	S
Manual Night Roller Shade	S	S	S	S	S
Adjustable Kitchen Shelves	S	S	S	S	S
Full Extension Drawer Guides w/Latches	S	S	S	S	S
Fantastic® Power Vent w/Wall Switch	S	S	S	S	S
Waste Basket	S	S	S	S	S
Pantry	S	S	S	S	S
King Size Encore Series Memory Foam Mattress w/Adjustable Head	S	N/A	S	S	S
King Size Serenity Series/Memory Foam Mattress	N/A	S	N/A	N/A	N/A
Lift-Up Bed w/Under Bed Storage	S	S	S	S	S
Bunk Beds w/5" Foam Mattress 28" x 73"	N/A	S	N/A	N/A	S
Headboard w/Designer Bedspread, Pillow Shams & Pillows	S	S	S	S	S

	40D	40G	40M	44H	44B
Coordinating Fabric Window Treatments & Lambrequins	S	S	S	S	S
Manual Day/Night Roller Shades	S	S	S	S	S
Remote Generator Start Switch	S	S	S	S	S
Solid Surface Nightstand Tops	S	S	S	S	S
Hardwood Raised Panel Doors	S	S	S	S	S
Hardwood Wardrobe Doors w/Mirrors	S	S	S	S	S
Cedar Lined Rear Wardrobe Closet	S	S	S	S	S
Wire Organizer's Wardrobe Closet	N/A	S	N/A	N/A	N/A
Dual Rear Wardrobe w/Hanging Rod	S	N/A	S	N/A	N/A
Full Rear Wardrobe w/Hanging Rod	N/A	N/A	N/A	S	S
Bunk Bed w/Privacy Shade	N/A	S	N/A	N/A	N/A
USB at Nightstands	S	S	S	S	S
Reading Lights Overhead the Bed	S	S	S	S	S
Polished Solid Lavy Countertop & Shelf	S	S	S	S	S
Feature Lighting Lavy Top	S	S	S	S	S
Tile Backsplash	S	S	S	S	S
Gemstone Undermount Lavy Sink	S	S	S	S	S
Residential Chrome Double Handle Faucet	S	S	S	S	S
Medicine Cabinet w/Mirror	S	S	S	S	S
Tile Shower	S	S	S	S	S
Glass Shower Door	S	S	S	S	S
Shower Skylight	S	S	S	S	S
Chrome Shower Head w/On/Off Sliding Adj Bar, Soap Dish & Matching Single Valve Faucet	S	S	S	S	S
Porcelain Foot-flush Toilet w/Water Saver	N/A	S	N/A	N/A	N/A
Porcelain Maserator Toilet	S	N/A	S	S	S
Fantastic® Power Vent w/Wall Switch	S	S	S	S	S
Coordinating Fabric Window Treatment	S	S	S	S	S
Manual Night Roller Shade	S	S	S	S	S
LG 32" Flat Screen LED TV (Bedroom)	S	S	S	S	S
LG 43" Flat Screen LED TV (Bedroom)	N/A	N/A	N/A	N/A	N/A
LG 43" Flat Screen LED TV (Living Area)	N/A	S	N/A	N/A	N/A
LG 49" Flat Screen LED TV (Living Area)	S	N/A	N/A	N/A	N/A
49" Pop-up TV (Living Area)	N/A	N/A	S	N/A	N/A
55" Pop-up TV (Living Area)	N/A	N/A	N/A	S	S
Bose® Solo 5 TV Sound System	S	S	S	S	S
Blu-Ray Player w/Remote	S	S	S	S	S
LG 32" Flat Screen LED TV (Front Overhead)	S	S	S	S	S
LG 49" Flat Screen LED TV (Living Area)	N/A	N/A	O	N/A	N/A
Air Conditioner: (3) Roof Mount High Efficiency Ducted 15,000 BTU Rear has Heat Pump	S	S	S	S	S
Aqua Hot 400D	S	S	S	S	S
Firefly Multiplex Wiring	S	S	S	S	S
Service: 50-amp, 120-volt Service Panel	S	S	S	S	S
Converter: 60 AMP Power Converter - Precision Circuits	S	S	S	S	S
Inverter: Single 2800W Pure Sine w/Remote - Magnum	S	S	S	S	S
Prewired - Roof Mounted Solar Panel	S	S	S	S	S
Energy Management System (EMS) w/Soft Start - Precision Circuits	S	S	S	S	S
Nuetral Loss Protection	S	S	S	S	S
Generator: 8kW Onan Quiet Diesel	S	S	S	S	S
Generator Auto Changeover	S	S	S	S	S
Auto Gen Start	S	S	S	S	S
Batteries: (6) 6V Deep Cycle House	S	S	S	S	S
Water Pump: 12V 3GPM High Cap Shurflo	S	S	S	S	S
Water Purification System	S	S	S	S	S
Black Water Tank Flush	S	S	S	S	S
Gravity Water Fill DS/RS	S	S	S	S	S
Cable TV/Satellite Hookup	S	S	S	S	S
Toilet Tank San-T-Flush System	S	S	S	S	S
GFCI Receptacle in Exterior Storage	S	S	S	S	S
Central Vacuum System	S	S	S	S	S
Surge Guard Transfer Switch	S	S	S	S	S
Power Water Hose Reel	S	S	S	S	S
Power Cord Reel	S	S	S	S	S
Technology Package	O	O	O	O	O

**CSA standards may require substitution or deletion to achieve conformance

DISCOVERY LXE STANDARD FEATURES AND OPTIONS

RV OWNERCARE

Limited one-year/15,000-mile coach warranty and three-year/45,000-mile structural warranty, whichever occurs first, and it is fully transferable for the first 12 months. RV OWNERCARE is one of the RV industry's most comprehensive programs and includes systems, appliances, components and construction, with no deductible and no service charge.

Chassis Warranty provided by Freightliner Custom Chassis Corporation®

YOUR LOCAL DEALER



OUR VERY OWN FLEETWOOD RV MOTORHOME SERVICE CENTERS

At Fleetwood RV, we strive to deliver peace-of-mind at every turn. Our devotion to customer service starts with our trusted dealer network and spans to our own staff of motorhome service professionals at REV Recreation Group's regional technical centers. The motorhome service centers are strategically located throughout the United States to provide you convenient service wherever the road takes you.

Below, you'll find the closest motorhome service center, as well as a list of the other centers. Please visit www.fleetwoodrv.com/motorhome-service-centers to schedule a Service Appointment.

East Coast REV Technical Center
800-509-3417

West Coast REV Technical Center
877-466-6226

ROADSIDE ASSISTANCE. ANYWHERE. ANYTIME.



24/7 CUSTOMER SUPPORT FOR:

- FUEL
- BATTERY
- LOCKSMITH
- TOWING
- SLIDE-OUT ISSUES
- AND MUCH MORE!

1-855-268-0414

REV GROUP

Fleetwood RV is part of REV Recreation Group, a division of REV Group, Inc., a family of 33 industry-leading motor vehicle brands. At REV Group, we innovate, design and build products that connect and protect thousands of people every day—our trusted vehicles are engineered with the utmost rigor and precision to deliver the highest levels of performance, reliability, durability and safety.

DISCLAIMERS

1. GVWR (Gross Vehicle Weight Rating) is the maximum permissible weight of this fully loaded motor home. The GVWR is equal to or greater than the sum of the (UVW) unloaded vehicle weight plus the (OCCC) occupant cargo-carrying capacity.
 2. GAWR (Gross Axle Weight Rating) is the maximum permissible loaded weight a specific axle is designed to carry.
 3. GCWR (Gross Combined Weight Rating) is the value specified by the motor home manufacturer as the maximum allowable loaded weight of this motor home with its towed vehicle. Towing and braking capacities may be different. Refer to Fleetwood and chassis manufacturer's manuals for complete information.
 4. Length measured from front bumper to rear bumper (excludes accessories).
 5. Excludes safety equipment and awnings.
 6. Motor homes feature a body width over 96" which will restrict your access to certain roads. Before purchasing, you should research any state and/or province road laws which may affect your usage.
 7. Tank manufacturer's listed water capacity (WC). Actual propane capacity is 80% of water listing as required by the safety code.
- † The chassis manufacturer recommends the installation of a supplemental brake control system to activate the brakes on the vehicle or trailer you are towing. Hitch receiver ratings expressed are maximum for the hitch receiver installed and may require the purchase of additional equipment that is dependent on the weight of the towed load. Consult with hitch receiver manufacturer for further information.
- * UVW and OCCC are found on the label containing the federal certification tag in each RV.
- ** Seatbelts and locations are shown in the brochure for display purposes only. Actual numbers and locations will vary by model.
- *** All 2019 REV Recreation Group motorhomes include a limited one year/15,000-mile coach warranty and three-year/45,000-mile structural warranty, whichever occurs first, and is fully transferable for the first 12 months.

FLEETWOOD MOTORHOME ASSOCIATION

As a Fleetwood RV owner, you're invited to become a member of the Fleetwood Motorhome Association (FMA). Becoming a member is the perfect way to meet other Fleetwood owners who love to travel across America and share in the RV lifestyle. Visit the FMA website at www.fma4fun.org to learn more and join the fun.

CONTACT US

To locate a dealer near you, visit our website at www.fleetwoodrv.com or call 1-800-322-8216. We can also be contacted at Fleetwood RV Customer Relations, P.O. Box 1007, Decatur, IN 46733.

IMPORTANT—PLEASE READ: Product information, photography and illustrations included in this publication were as accurate as possible at the time of printing. For further product information and changes, please visit our website at www.fleetwoodrv.com or contact your local Fleetwood RV dealer. Prices, materials, design and specifications are subject to change without notice. All weights, fuel, liquid capacities and dimensions are approximate. Fleetwood RV has designed its recreational vehicles to provide a variety of uses for its customers. Each vehicle features optimal seating, sleeping, storage and fluid capacities. The user is responsible for selecting the proper combination of loads (i.e., occupants, equipment, fluids, cargo, etc.) to ensure that the vehicle's capacities are not exceeded.

www.fleetwoodrv.com

©2018 REV Group, Inc. Printed in the USA, 10/18. Model Year 2019, First Edition.