



2019 QWEST | ESTEEM | ODYSSEY

2019 CLASS C



ENTEGRA  
COACH®

*enjoy the journey*



YOUR VOYAGE  
BEGINS HERE



**QWEST** PG 3-4

**ESTEEM** PG 5-6

**ODYSSEY** PG 7-8

## ODYSSEY



EZ

## ESTEEM



EZE



ENTEGRA  
COACH®

E-Z Drive® is a powerful blend of precise handling and renowned stability. Hands down, it's the best ride. **Experience E-Z Drive for yourself—visit your local dealer and take a test drive.**

EZ EZE

### HELLWIG® HELPER SPRINGS

Work with the chassis' existing springs to give the RV more support, improving stability under heavy loads

EZ EZE

### RUBBER ISOLATION MOUNTS

Positioned near the tires to absorb road shock, dampen noise and minimize vibrations

EZ EZE

### COMPUTER-BALANCED DRIVESHAFT

Ensures smooth and efficient power transfer to the wheels

EZ EZE

### STABILIZER BAR(S)

Reduces the body roll of a vehicle during fast cornering or over road irregularities

EZE

### HEAVY-DUTY REAR STABILIZER BAR

A larger bar and polyurethane bushings, instead of rubber, transfer power faster for extra support, more stability and easier handling

EZE

### BILSTEIN® SHOCK ABSORBERS

Feature a unique monotube gas-pressure design, providing optimum ride quality and vehicle control

# QWEST

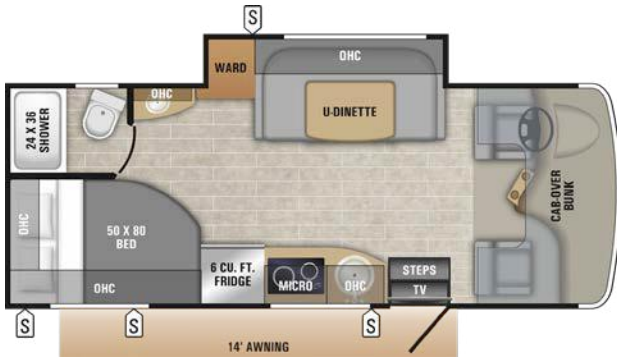


## TOP FEATURES

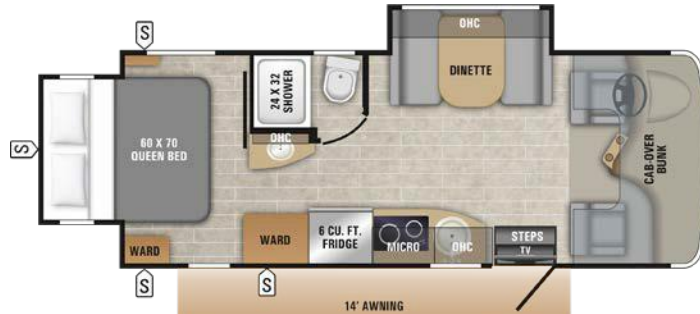
- Luxury Woven Vinyl Flooring
- European Style Curved Cabinetry
- 3-Way (Gas/Electric/12V) Refrigerator
- Stainless Convection Microwave



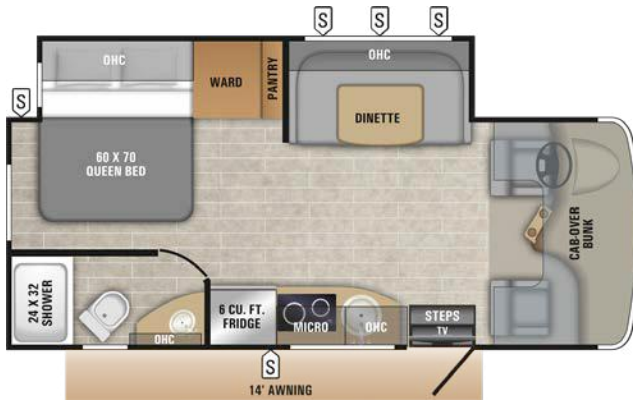
## FLOORPLANS



24A



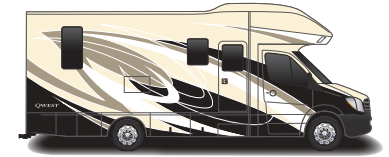
24K



24L

| Floorplan | GVWR (lbs.) | GCWR (lbs.) | Wheel Base | Overall Length | Exterior Height w/ A/C | Exterior Width | Interior Height | Fresh Water Capacity (gal.) | Grey Waste Water Capacity (gal.) | Black Waste Water Capacity (gal.) | Propane (gal.) |
|-----------|-------------|-------------|------------|----------------|------------------------|----------------|-----------------|-----------------------------|----------------------------------|-----------------------------------|----------------|
| 24A       | 11,030      | 15,250      | 170"       | 25' 2"         | 10' 11"                | 96"            | 80"             | 39                          | 31                               | 31                                | 12.2           |
| 24K       | 11,030      | 15,250      | 170"       | 25' 2"         | 10' 11"                | 96"            | 80"             | 43                          | 31                               | 31                                | 12.2           |
| 24L       | 11,030      | 15,250      | 170"       | 25' 2"         | 10' 11"                | 96"            | 80"             | 43                          | 31                               | 31                                | 12.2           |

## EXTERIOR OPTIONS



CLIFF CREST



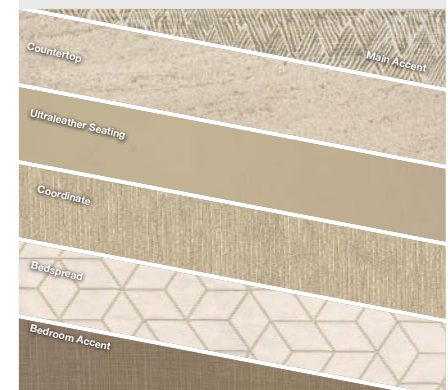
ESCAPE



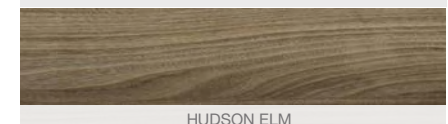
SKY WATCH

## INTERIOR OPTIONS

SOLSTICE



WOOD



HUDSON ELM

# ESTEEM

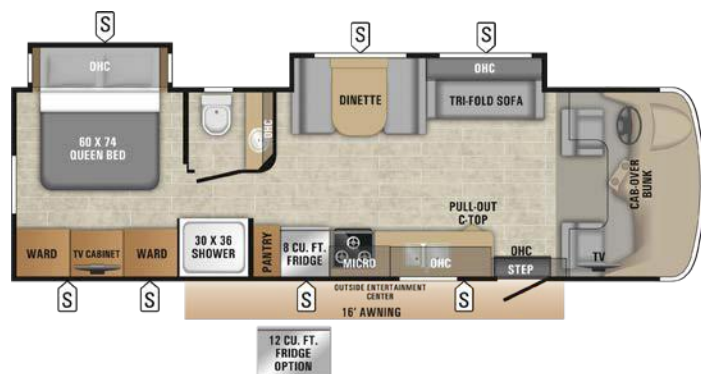


## TOP FEATURES

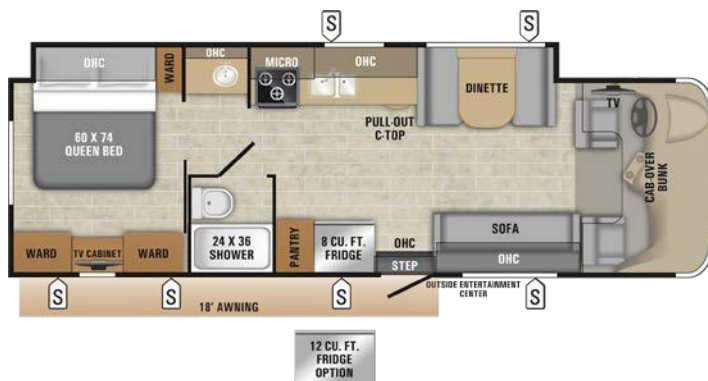
- Raised Panel Cabinetry
- Stainless Appliance Package
- Pull-Out Countertop Extension (Select Models)
- Solid-Surface Countertops



## FLOORPLANS



29V



30X



31L

| Floorplan | GVWR (lbs.) | GCWR (lbs.) | Wheel Base | Overall Length | Exterior Height w/ A/C | Exterior Width | Interior Height | Fresh Water Capacity (gal.) | Grey Waste Water Capacity (gal.) | Black Waste Water Capacity (gal.) | Propane (gal.) |
|-----------|-------------|-------------|------------|----------------|------------------------|----------------|-----------------|-----------------------------|----------------------------------|-----------------------------------|----------------|
| 29V       | 14,500      | 22,000      | 223"       | 32' 6"         | 11' 6"                 | 100"           | 84"             | 47                          | 41                               | 32                                | 16.5           |
| 30X       | 14,500      | 22,000      | 223"       | 32' 6"         | 11' 6"                 | 100"           | 84"             | 47                          | 41                               | 31                                | 16.5           |
| 31L       | 14,500      | 22,000      | 223"       | 32' 6"         | 11' 6"                 | 100"           | 84"             | 47                          | 41                               | 32                                | 16.5           |

## EXTERIOR OPTIONS



CAREFREE



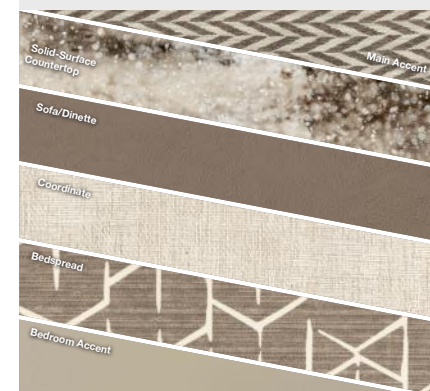
CHAMPAGNE



VOYAGE

## INTERIOR OPTIONS

BELMONT



WOOD



VAGABOND

# ODYSSEY



## TOP FEATURES

- 30" x 82" Panoramic Front Window
- Stainless Steel Sinks
- Front Overhead Bunk Rated 750Lb. Capacity
- Stainless Appliance Package



## FLOORPLANS



22J



24B



25R



26D



29V



31L

| Floorplan | GVWR (lbs.) | GCWR (lbs.) | Wheel Base | Overall Length | Exterior Height w/ A/C | Exterior Width | Interior Height | Fresh Water Capacity (gal.) | Grey Waste Water Capacity (gal.) | Black Waste Water Capacity (gal.) | Propane (gal.) |
|-----------|-------------|-------------|------------|----------------|------------------------|----------------|-----------------|-----------------------------|----------------------------------|-----------------------------------|----------------|
| 22J       | 14,500      | 22,000      | 158"       | 24' 8"         | 11' 6"                 | 100"           | 84"             | 43.5                        | 40                               | 31                                | 12.2           |
| 24B       | 14,500      | 22,000      | 181"       | 26' 8"         | 11' 6"                 | 100"           | 84"             | 47                          | 40                               | 31                                | 12.2           |
| 25R       | 14,500      | 22,000      | 181"       | 28' 8"         | 11' 6"                 | 100"           | 84"             | 47                          | 41                               | 32                                | 12.2           |
| 26D       | 14,500      | 22,000      | 181"       | 28' 8"         | 11' 6"                 | 100"           | 84"             | 42.5                        | 42.5                             | 41                                | 12.2           |
| 29V       | 14,500      | 22,000      | 223"       | 32' 6"         | 11' 6"                 | 100"           | 84"             | 47                          | 41                               | 32                                | 12.2           |
| 31L       | 14,500      | 22,000      | 223"       | 32' 6"         | 11' 6"                 | 100"           | 84"             | 47                          | 41                               | 32                                | 12.2           |

## EXTERIOR OPTIONS



STANDARD

## INTERIOR OPTIONS



## QWEST STANDARDS & OPTIONS

### CUSTOMER VALUE PACKAGE

Sony® infotainment dash radio with GPS  
One-piece seamless fiberglass front cap  
Automatic electric stabilizer jacks  
Remote control and heated mirrors  
backup camera with monitor  
12V tank heating pads  
Frameless windows  
Girard® armless electric patio awning with LED light strip  
Swivel driver and passenger seats  
Keyless cab entry

### STANDARD DRIVING EQUIPMENT

Mercedes 3500 chassis 170" wheelbase  
V-6 Turbo 188 HP diesel engine with electronic fuel injection and 325 lb.-ft. torque  
5-speed automatic transmission  
11,030-lb GVWR chassis  
7-pin trailer hitch plug  
26.4-gallon fuel tank  
5,000-lb. rear hitch receiver with dual connector  
220-amp alternator  
Front and rear disc, 4-wheel anti-lock brakes  
Ultraleather® driver passenger seats  
12V chassis battery  
Cab area privacy curtain

### STANDARD EXTERIOR EQUIPMENT

Full-Body Paint  
One-piece fiberglass front cap  
One-piece fiberglass roof  
Electric-powered, single-entrance step  
Fiberglass running boards  
Flush-mount LED marker lights  
Backup/Reverse lights  
Brake lights  
Third brake light  
Aluminum skirt-hung baggage doors  
110V GFCI exterior receptacles  
1,000-Watt Inverter  
Battery disconnect  
30-amp detachable electrical service cord  
60 amp 12V converter  
3.6 KW Onan® LP generator  
2-12V house batteries  
12.2-gal. propane tank  
Black tank sprayer  
Outside shower  
LP quick-connect hookup  
Aluminum rims

### STANDARD INTERIOR EQUIPMENT

Soft touch vinyl ceiling  
Ball bearing drawer guides  
European style curved cabinetry  
6 cu. ft. gas/electric/12 volt refrigerator  
Suburban black 2-burner drop-in cooktop with flush cover  
Stainless convection microwave  
Stainless steel sink  
Wooden sink cover/cutting board  
12V demand water pump  
6 gallon gas/electric water heater and water heater bypass  
Digital antenna with signal booster  
15,000-BTU low-profile air conditioner  
Auto-ignition 20,000-BTU ducted furnace  
Water filtration system  
12V USB charging station  
Entegra-exclusive easy operation legless dinette table (24K)  
U-shaped dinette with stow away pedestal legs (24L, 24A)  
Lap safety belts on living area seats  
Woven Vinyl Flooring  
High-intensity LED ceiling lights  
Day/Night roller shades  
Vent fan in living room  
32" LED living room TV  
Cable TV hookup with RG-6 coax  
Satellite dish prep  
Porcelain toilet  
Shower skylight  
Bathroom electric roof vent  
Queen size bed with bedspread  
Bedroom TV Prep  
Overhead bunk (750-lb. rating)

### OPTIONS

Sun folding windshield shade  
3.2 KW diesel generator  
B-Plus front cap

## ESTEEM STANDARDS & OPTIONS

### CUSTOMER VALUE PACKAGE

EZDRIVE ELITE: Computer balanced drive shaft, Bilstein® shocks, heavy-duty rear stabilizer bar, standard front stabilizer bar, Hellwig® helper springs, rubber isolation mounts  
Sony Infotainment Dash Radio with GPS  
One-piece seamless fiberglass front cap

Automatic hydraulic leveling jacks  
Chrome, remote-controlled and heated mirrors  
Backup and side-view cameras  
Frameless Windows  
1000-watt inverter  
Electric awning with LED lights  
Exterior 32" LED TV  
24" LED TV in Bedroom  
Solid-surface kitchen countertops with sink covers  
One-piece seamless front cap with 30"x82" automotive-bonded panoramic front window  
Keyless cab entry

### STANDARD DRIVING EQUIPMENT

Ford® E-450 chassis  
Triton® 6.8L EFI V-10 305HP engine with 420 lb.-ft. torque  
6-speed automatic TorqShift series transmission with overdrive  
14,500-pound GVWR  
22,000-pound GCWR  
7,500-pound hitch with 750-lb tongue capacity and 7-pin plug  
55-gallon fuel tank  
120-amp alternator  
Driver and passenger air bags  
Power anti-lock brakes with power steering  
Tilt steering wheel  
Auxiliary start switch  
A/C and cruise control  
Power windows and door locks  
Wheel liners  
Custom dash applique

### STANDARD EXTERIOR EQUIPMENT

TuffShell™ vacuum-bonded, laminated floor, sidewalls and roof  
White fiberglass exterior with vinyl graphics  
Bead-foam insulation (R-24 max roof, R-9 max floor, R-5 max walls)  
One-piece seamless fiberglass roof  
Fiberglass, radius-cornered entrance door with large window  
Electric-powered entrance step  
Fiberglass running boards and transition wings  
LED taillights  
Third brake light  
Locking exterior storage compartments  
120V GFCI-protected exterior receptacle  
12V electrical system with 120V, 60-amp power converter  
Illuminated battery disconnect switch

30-amp power cord  
32" Exterior TV  
High-output, marine grade exterior speakers  
Onan 4,000-watt MicroQuiet™ generator with auto-changeover  
12V house battery  
16.5 gal. propane tank  
Black tank sprayer  
Outside shower  
4-inch bumper-tube with sewer hose storage  
Heated holding tanks (12V pads)

### STANDARD INTERIOR EQUIPMENT

Raised panel cabinetry  
Hardwood fascia  
8-cubic-foot, flush-mount, double door refrigerator  
3-burner range with 9,000-BTU SuperBurner™ recessed with solid-surface covers  
Oven  
Stainless steel sink in kitchen  
12V demand water pump  
6 gallon gas/electric DSI auto-ignition water heater  
Interior command center  
15,000-BTU A/C with heat pump  
31,000-BTU auto-ignition furnace with wall thermostat  
Light in wardrobe  
Water filtration system  
Entegra-exclusive easy operation legless dinette table  
Vinyl flooring throughout  
High-intensity, recessed LED ceiling lights  
Black out night roller shades  
32-inch digital LED HDTV  
Cable TV hookup with RG-6 coax  
Satellite dish prep  
Stainless steel sink in bathroom  
Porcelain toilet with foot flush  
Shower with decorative surround and glass shower door  
Skylight in shower  
Queen-sized bed with bedspread  
Under-bed storage  
24" LED TV in bedroom  
Fan-Tastic Fan in bedroom  
Full 750-pound overhead bunk capacity

### OPTIONS

Carefree full body paint  
Voyage full body paint  
Champagne full body paint

(2) 24" LED TV's in bunk area with CD/DVD players (31L Only)  
 12 cu.ft. Refrigerator (29V, 30X)  
 11,000-BTU A/Cs (2) with energy management system  
 Aluminum rims

## ODYSSEY STANDARDS & OPTIONS

### CUSTOMER VALUE PACKAGE

EZDRIVE: Computer-balanced driveshaft, standard front and rear stabilizer bars, Hellwig helper springs, rubber isolation body mounts  
 Soundstream Infotainment Dash Radio with GPS and CD/DVD Player  
 One-piece seamless fiberglass front cap with 30"x82" front windshield  
 12V electric patio awning  
 Black holding tank sprayer  
 Rear back-up camera and monitor  
 Heated holding tanks (12V pads)  
 8 cu. ft. flush-mount, double-door refrigerator  
 32" LED HDTV  
 Keyless cab entry

### STANDARD DRIVING EQUIPMENT

Ford E-450 chassis  
 Triton 6.8L EFI V-10 305 HP engine with 420 lbs.-ft. torque  
 6-speed automatic TorqShift® series transmission with overdrive  
 Ford Chassis – 14,500-pound GVWR  
 Ford Chassis – 22,000-pound GCWR  
 Ford Chassis – 7,500-pound hitch with 750-lb tongue capacity and 7-pin plug  
 120-amp alternator  
 55-gallon fuel tank  
 Driver and passenger air bags  
 Power anti-lock brakes with power steering  
 Tilt steering wheel  
 Auxiliary start switch  
 A/C and cruise control  
 Remote-controlled, side-view mirrors  
 Power windows and door locks  
 Third brake light

### STANDARD EXTERIOR EQUIPMENT

TuffShell™ vacuum-bonded, laminated floor, sidewalls and roof  
 Bead-foam insulation (R-15 max roof, R-9 max floor, R-5 max walls)  
 Aluminum running boards  
 Fiberglass, radius-cornered entrance door

with screen door  
 Electric-powered entrance step  
 Pass-through storage compartment with light (select models)  
 Onan 4,000-watt MicroQuiet generator  
 42-lb. propane tank (12.2 GAL)  
 120V G.F.C.I.-protected exterior receptacle  
 12V electrical system with 120V, 60-amp power converter  
 30-amp power cord  
 Outside shower  
 4" bumper-tube sewer hose storage  
 Roof ladder  
 Leveling jack prep  
 One-piece seamless fiberglass roof

### STANDARD INTERIOR EQUIPMENT

84" ceiling height  
 Ball bearing drawer guides  
 3-burner range with 9,000-BTU SuperBurner and piezo igniter  
 Convection microwave oven (N/A 31L)  
 12V demand water pump  
 6 gallon gas/electric DSI auto-ignition water heater  
 Water filtration system  
 Entegra-exclusive easy operation legless dinette table (N/A 24B)  
 Lap safety belts on all living area seats  
 Linoleum flooring  
 Interior command center  
 Cable TV hookup with RG-6 coax  
 Digital antenna with signal booster  
 15,000-BTU ducted air conditioner  
 30,000-BTU furnace with wall thermostat with auto-ignition  
 Shower with decorative surround and glass shower door  
 Removable clothing rod in shower  
 Skylight in shower  
 Porcelain toilet with foot flush  
 Queen-sized bed with bedspread  
 Under-bed storage (select models)  
 Large wardrobes  
 Full cab-over bunk with headboard (750-lb. rating)  
 Bunk beds (300-lb. rating) (31L)

### OPTIONS

Hydraulic leveling jacks  
 Bedroom TV  
 (2) 24" LED TV's in bunk area



## THE ENTEGRA DIFFERENCE

- One-piece seamless front cap** for increased durability and protection
- 82-inch x 30-inch automotive-bonded panoramic front window**
- 750-pound overhead bunk capacity** offers nearly 250 pounds more than the industry average for greater safety and peace of mind
- One-piece seamless fiberglass roof**
- Integrated third brake light** improves safety on the road
- Seatbelts** in every seating position
- Frameless windows** make exterior maintenance easier than ever and give the unit a sleek, modern look
- Full pass-through storage** for easy packing and unpacking (select models)

For a full list of standards and options, use your camera app to scan code.

#### QWEST



#### ESTEEM



#### ODYSSEY



ENTEGRACOACH, INC., P.O. BOX 460, MIDDLEBURY, IN 46540

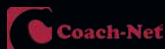
WWW.ENTEGRACOACH.COM



Gross Vehicle Weight Rating (GVWR): The maximum permissible weight of the motorcoach, including the Unloaded Vehicle Weight (UVW) plus passengers, personal items, all cargo, fluids, options and dealer-installed accessories. The GVWR is equal to or greater than the sum of the UVW and the Cargo Carrying Capacity. Gross Axle Weight Rating (GAWR): The maximum allowable weight each axle assembly is designed to carry, as measured at the tires, therefore including the weight of the axle assembly itself. Gross Combined Weight Rating (GCWR): The maximum allowable combined weight of the motorcoach used as a tow vehicle and the attached towed vehicle.

Entegra Coach, Inc. | P.O. Box 460 | Middlebury, IN 46540 See dealer for further information and prices. All information in this brochure and on [www.entegracoach.com](http://www.entegracoach.com) is the latest available at the time of publication approval. Entegra Coach reserves the right to make changes and to discontinue models without notice or obligation. Photography may show optional equipment or props used for decoration purposes only. RVs built for sale in Canada may differ to conform to Canadian codes. ENTEGRA COACH, JAYCO and the JAYCO BIRD IN FLIGHT are registered trademarks of Jayco, Inc. Printed in U.S.A. 39K 7/18 © 2018 Entegra Coach, Inc. 274889

A year's access to Coach-Net™—the country's largest RV emergency road service.



**LaMESA REC  
VAN**

LaMesaRV.com  
800-496-8778