

2019 | FLAIR
CLASS A GAS



LASTING DEPENDABILITY | FAMILY FAVORITE | FEATURE PACKED

 **FLEETWOOD RV**

www.fleetwoodrv.com



FLAIR 29M
Shown in River Mist
Partial Paint

THE PERFECT FIT

The Fleetwood classic just got a makeover. Not just redesigned, the 2019 Flair features top-to-bottom changes to make first-time Class A owners feel like long-time professionals. With your choice of five modern floorplans, this Class A Gas is spacious, comfortable and ready for the open road with a 600-lb. capacity Hide-A-Loft™ drop down queen bed, soft-touch ceilings, a heated wet-bay, and a low profile, modern front cap. But, that's just the beginning. The 2019 Flair also brings a host of practical features, such as 50-amp service, a 15K-BTU ducted A/C, enclosed and heated holding tanks, and pass-thru storage.

YOU WANT EVERY SINGLE ADVANTAGE WHEN IT COMES TO YOUR RV.

At REV, we don't settle for anything less than the best, and neither should you. That's why every Fleetwood RV motorhome features industry-leading materials and construction. With these REV brands, you'll also find the ultimate in RV convenience and strength, like our auto hydraulic leveling system, Vacu-Bond™ construction, Dryseal™ edge coating, and much more – all coming standard to elevate your travels.

Each of these advantages have been engineered to deliver superior reliability, durability, and most of all, customer satisfaction.

1. Power Platform™ (Gas Motorhomes)

Designed to deliver the best in storage, strength, balance and control, the exclusive Power Platform provides a significant enhancement to the Ford® drivetrain.

2. Auto Hydraulic Leveling System

More reliable than electric leveling jacks, our automatic hydraulic leveling system is reliable, durable and easy to use. The operating procedure is clean and easy, the results are smooth, simple leveling at the push of a button.

3. Powerlock System™ (Interlocking Walls and Ceiling)

REV's interlocking aluminum extrusion wall-joint system integrates sidewall and roof assembly into one locked-together overall structure for long-term performance and durability.

4. Powerframe System™ (Precision-Welded Aluminum Walls, Floor, and Roof Structures)

Our wall and roof frames are designed and engineered to fit precisely with interlocking extrusions on the steel-reinforced bridge structure. No "hammer-it-to-fit" stick and frame construction here.

5. Vacu-Bond™ Construction

Vacuum-bonded assemblies combine industry-leading materials and construction for a straight and flat integrated wall that's better suited to the rigors of the road. It applies up to 415,000-pounds of vacuum pressure to our already strong welded-aluminum sidewall frame, bead-foam panel insulation, Tuff-Coat fiberglass skin, and inner wall materials for over 30 minutes – far exceeding industry standards.

6. Solid Bead-Foam Engineered Fit Insulation™

In some RVs, you may find air holes in the insulation. Not in a REV RV. Using exact measurements, bead-foam is placed between every structural support to eliminate any gaps and provide insulation from both exterior temperature and noise.



Five Layer Wall

Our Vacu-Bond™ walls feature an adhesive bonding process that applies up to 415,000-pounds of vacuum pressure to the welded-aluminum sidewall frame, bead-foam panel insulation, and Tuff-Coat fiberglass skin for more than 30 minutes – far exceeding industry standards.



Weld Joint

Every joint found in the frame of your Fleetwood motorhome has been welded by a certified welder to add strength to the frame, unlike the stick and nail construction found on other RVs.

7. Dryseal™ Edge Coating

This water-wicking coating is applied to every edge of the walls and windows for long-lasting durability. It helps to seal out moisture, prevent delamination, swelling, and mold.

8. Tuff-Coat Fiberglass Walls

REV RV seeks to use the highest quality exterior fiberglass on our Class A gas and Class A diesel products. The impressive tuff-coat fiberglass skin is extremely weather resistant and UV resistant. Most importantly, there is no wood substrate on the exterior of the REV Class A products. Delamination is a major concern for manufacturers using the composite or wood backer in their walls. Not at REV RV, our exterior skin has no composite and no wood, just the fiberglass.

9. Tuff-Ply Engineered Vinyl Roofing

As the name implies, this "Tuff-Ply" or Thermoplastic Poly Olefin is as tough as it comes and is very low maintenance. Tuff-Ply is flexible, pliable and easily conforms with the roofline radius with little to no stress at the awning rail connection seam. Tuff-Ply is a clean, non-streaking, non-chalking engineered vinyl material that is easy to maintain.

10. Tuff-PEX™ Plumbing System

It's a complete system of flexible, yet durable, Oetiker tubing, fittings, and stainless-steel rings – all with sub-zero ratings. Colors of red for hot and blue for cold make servicing simple.

11. Tapered Slideout Box Tops

Our slideouts include a tapered roofline that directs water away from the RV to provide an additional level of moisture protection. There are also multiple bead-seals, as well as our debris awning protection.

12. Seamless Metallic Slide Room Underbelly

What's underneath is just as important as what's on top. Our metallic slide bottom goes above the standard wood bottom for protection against the elements, and adds yet another level of durability.

13. Roto-Cast Molded Luggage Bays

Instead of the industry-standard plywood, these molded bays are more durable, look great, and can be washed with a hose.

14. Dedicated Full-Length Metallic A/C Ducting

Instead of cut-out foam channels, REV provides insulated A/C ducting that runs the entire length of your motorhome with carefully placed outlets in the most occupied places to assure cool comfort.

15. Sure-Glide Flush Floor Aluminum Slide Transition Ramp

Pinewood ramps that absorb moisture, crack and rot are the industry standard. Not here! Our aluminum ramps will stay straight, extend and retract easily, and will provide you with years of trouble-free operation.

16. Automotive Inspired Bonded Windshield

REV RV's bonded windshields surpass the standard "floating" windshield in durability. The entire perimeter of glass is bonded to a frame that provides more support and is much more conducive to the demands of the road.

17. Pass-Through Storage

We far exceed the industry standards of exposed seals and hinges with a more durable design taken from our luxury motor coaches.



Ceiling Interlock

You won't find stick and frame construction here. Our exclusive extruded aluminum allows the ceiling to "lock" with the wall structure, creating one solid aluminum assembly.



Build your own Flair at
<https://www.fleetwoodrv.com/build-your-own>



2

FLAIR 29M
 Shown in River Mist
 Partial Paint



The 2019 Flair has been completely redesigned for 2019. Changes are meant to better serve entry-level gas customers and offers more amenities as standards on each Flair.

3

FLAIR 29M
Shown in Desert Ridge
Partial Paint

4

FLEETWOOD RV
www.fleetwoodrv.com





Each Flair floorplan has all the well-thought out amenities of home. Your adventures are as endless as your imagination when you and your family make memories in a Flair!

5

6

FLAIR 29M
Shown in French Toast decor
with Nottingham Cherry cabinetry



FLAIR 29M
Shown in French Toast decor
with Nottingham Cherry cabinetry



FLAIR 28A
Optional Theatre Seating
Shown in Cobblestone decor



FLAIR 28A
Optional Theatre Seating
Shown in Cobblestone decor
with Greystone cabinetry





FLAIR 29M
Shown in French Toast decor
with Nottingham Cherry cabinetry

9



FLAIR 28A
Shown in Cobblestone decor
with Greystone cabinetry

10

TOP SELLING FEATURES

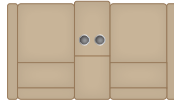
- Low profile modern design front cap
- Clean bright oyster exterior
- 50 AMP service
- 15K BTU ducted air conditioner
- Hide-A-Loft™ drop down queen bed w/600lb capacity and industry leading headroom
- 50" exterior TV
- Electric entry step
- Doggy/safety window
- Heated wet-bay
- Soft-touch ceilings
- 1.7 cu/ft microwave
- Porcelain toilet
- Auto generator start (N/A 28A)



For more photos and information visit
www.fleetwoodrv.com

FLOORPLANS

AVAILABLE OPTIONS



194 THEATRE SEATING
(28A, 32S, 34J)

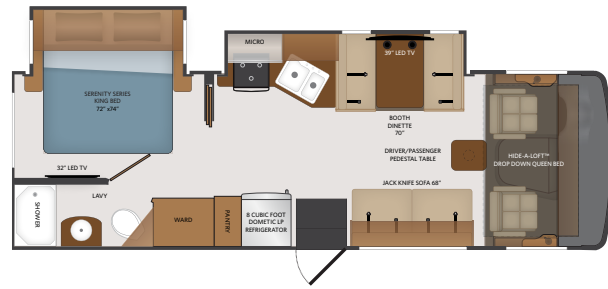


126 WASHER AND DRYER COMBO
(35R)

096	KING STATIONARY SATELLITE SYSTEM w/DISH NETWORK RECEIVER(S)
126	WASHER AND DRYER COMBO (35R)
194	THEATRE SEATING (28A, 32S, 34J)
230	ROOF VENT RAIN COVERS
331	5.5 GENERATOR w/DUAL A/C (29M, 32S)
435	CSA-PKG FORD®
447	CSA FORD® INSTRUMENT PANEL
605	DUAL GLAZED WINDOWS
756	SUSPENSION UPGRADE
953	POWER DRIVER SEAT

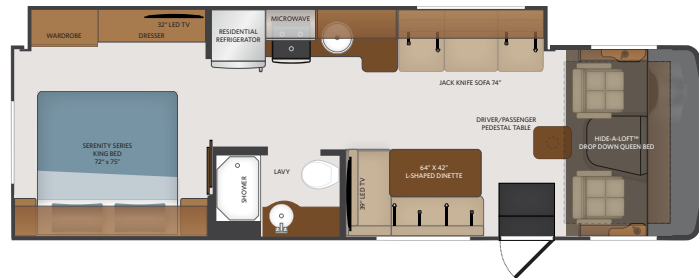
28A

Options: 096, 194, 230, 435, 447, 605, 756, 953



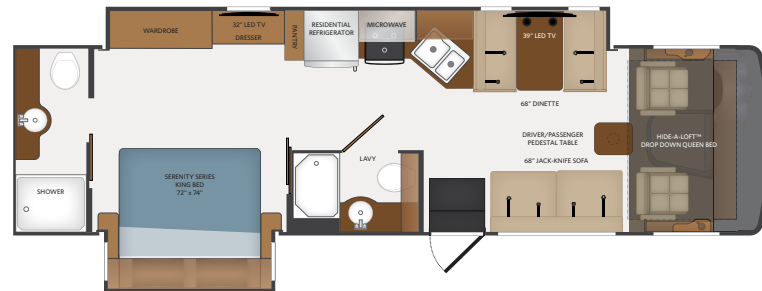
29M

Options: 096, 230, 331, 435, 447, 605, 756, 953



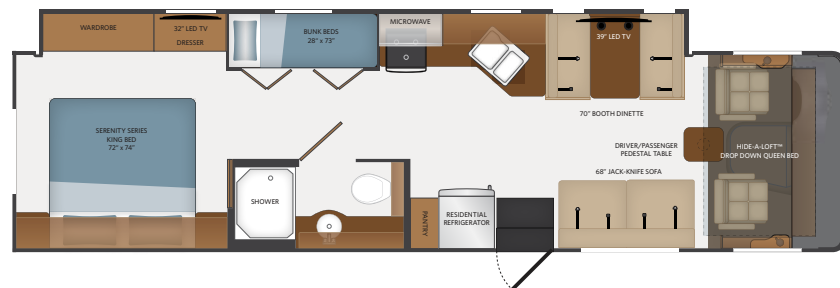
32S

Options: 096, 194, 230, 331, 435, 447, 605, 756, 953



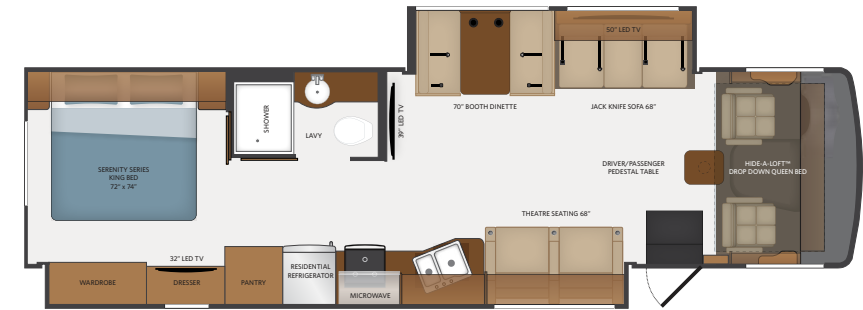
34J

Options: 096, 194, 230, 435, 447, 605, 756, 953



35R

Options: 096, 126, 230, 435, 447, 605, 756, 953



CHASSIS

MODEL	28A	29M	32S	34J	35R
Wheelbase (inches)	190"	190"	208"	228"	228"
GVWR (lbs) ¹	16,000	18,000	22,000	22,000	22,000
Front GAWR (lbs) ²	6,500	7,000	8,000	8,000	8,000
Rear GAWR (lbs) - 320HP ²	11,000	12,000	15,000	15,000	15,000
GCWR (lbs) - 320HP ³	21,000	23,000	26,000	26,000	26,000
Hitch Rating Weight (lbs) ^{††}	8,000	8,000	8,000	8,000	8,000
Tongue Weight (lbs)	800	800	800	800	800
Fuel Capacity (gal)	80	80	80	80	80

DIMENSIONS AND CAPACITIES

MODEL	28A	29M	32S	34J	35R
Overall Length (inches) ⁴	29' 3"	31' 0"	33' 6"	36' 0"	36' 0"
Overall Height (with A/C) ^{5,6}	12' 6"	12' 6"	12' 6"	12' 6"	12' 6"
Overall Width (maximum) ^{5,6}	102"	102"	102"	102"	102"
Interior Height (maximum)	82"	82"	82"	82"	82"
Interior Width (maximum)	96"	96"	96"	96"	96"
Patio Awning Width (feet & inches)	20'	20'	14'	22'	18'
Interior Storage (cu. ft.)	81	92	97	110	130
Exterior Storage (cu. ft.)	70	45	83	82	160
Fresh Water Holding Tank (gal)	50	50	50	50	50
Grey Water Holding Tank (gal)	37	37	74	37	37
Black Water Holding Tank (gal)	37	37	37	37	37
Appliance Propane Tank (gal) (WC)	14	14	14	14	14
Water Heater Tank (gal)	6	6	10	6	6

FORD® CHASSIS

Model: FORD®
Engine: 6.8L Triton V10
Transmission: Ford® 6-Speed, Automatic w/Overdrive

Alternator: 175 Amp
Torque: 460 lb.-ft. @ 3,000 RPM
Horsepower: 320 HP @ 3,900 RPM

EXTERIOR CHOICES

VINYL OPTION



ARTIC



SADDLEBROOK

PARTIAL PAINT
*(PARTIAL PAINT IS NOT AVAILABLE ON 28A)



RIVER MIST



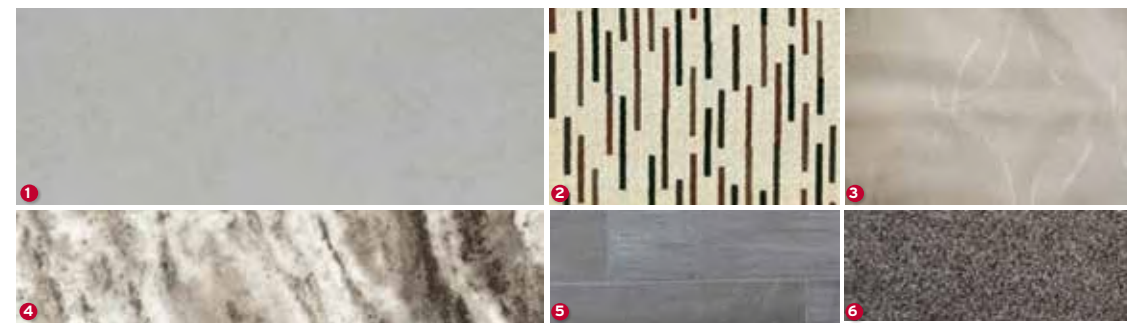
DESERT RIDGE

INTERIOR DECOR CHOICES

COBBLESTONE



FRENCH TOAST



- 1 SOFA
- 2 LIVING ACCENT
- 3 BEDSPREAD
- 4 COUNTERTOP
- 5 FLOORING
- 6 CARPET

DESIGNER RECOMMENDS THE FOLLOWING INTERIOR AND EXTERIOR COMBINATIONS

Cobblestone Décor	+	Greystone Cabinetry	+	Artic or River Mist Graphics
French Toast Décor	+	Cappuccino Cabinetry	+	Saddlebrook or Desert Ridge Graphics
French Toast Décor	+	Nottingham Cherry Cabinetry	+	Saddlebrook or Desert Ridge Graphics



CAPPUCCINO



GREYSTONE



NOTTINGHAM CHERRY

	28A	29M	32S	34J	35R	
CAB EXTERIOR	Automotive One-Piece Windshield	S	S	S	S	S
	Daytime Running Lights	S	S	S	S	S
	Remote Power/Heated Mirrors w/Sidewall Cameras	S	S	S	S	S
	Tinted Slider Driver/Passenger Windows	S	S	S	S	S
	Passenger Doggy Window	S	S	S	S	S
	Automotive Style Windshield Wiper System	S	S	S	S	S
	Dash/Engine Cover	S	S	S	S	S
CAB INTERIOR	Black Instrument Gauges w/Electronic Info Center	S	S	S	S	S
	Driver/Passenger Center Table	S	S	S	S	S
	High Output Dash Air Conditioning and Heat	S	S	S	S	S
	USB and Auxiliary Inputs	S	S	S	S	S
	12V Accessory Ports	S	S	S	S	S
	110-Volt AC Outlets	S	S	S	S	S
	Electronic Cruise Control	S	S	S	S	S
	Windshield Wipers w/Delay	S	S	S	S	S
	Steering Wheel w/Tilt Column	S	S	S	S	S
	Boss Stereo w/AM/FM/Bluetooth® w/Backup Camera Screen	S	S	S	S	S
EXTERIOR	Driver Chair w/Reclining Back, Swivel (Nonpower)	S	S	S	S	S
	Power Driver Seat	0	0	0	0	0
	Passenger Chair w/Reclining Back & Swivel (Nonpower)	S	S	S	S	S
	Seat Belts - Three Point Driver/Passenger w/Adjustable Straps	S	S	S	S	S
	Driver and Passenger Side Panels w/Cupholders	S	S	S	S	S
	Driver/Passenger Windshield Roller Shade (Electric)	S	S	S	S	S
	Driver/Passenger Window Shades (Manual)	S	S	S	S	S
	Auto Leveling Jacks Controls	S	S	S	S	S
	Fiberglass Front Cap w/Automotive Headlighting	S	S	S	S	S
	Hood Insert	S	S	S	S	S
	Rear Laminated Wall w/Automotive Lighting	S	S	S	S	S
	ABS Wheel Well Trims	S	S	S	S	S
	TPO Roof-Thermoplastic Polyolefin	S	S	S	S	S
	Partial Automotive Paint w/Vinyl Graphics	N/A	0	0	0	0
	Leg Electric Patio Awning w/LED	S	S	S	S	N/A
	Legless Electric Patio Awning w/LED	N/A	N/A	N/A	N/A	S
	Entry Awning	N/A	N/A	N/A	N/A	S
	Radius Door w/Screendoor, w/Latch, Deadbolt Lock	S	S	S	S	S
	Window Above Entry Door	S	S	S	S	N/A
	Windows - Large Single Pane Frameless	S	S	S	S	S
	Windows - Large Dual Glazed Frameless	0	0	0	0	0
	Exterior Entertainment Center w/50" TV w/Speakers	S	S	S	S	S
	Exterior Kitchen	N/A	S	N/A	S	N/A
	Front, Side & Rear Clearance & Marker Lighting	S	S	S	S	S
	Gravity Fresh Water Fill	S	S	S	S	S
Exterior Service Station-Water Pump Switch, Exterior Hose & City Water, Park Cable & Satellite Hookups & Black Tank Flush	S	S	S	S	S	
Rear Ladder	S	S	S	S	S	
Exterior Shower	S	S	S	S	S	
Enclosed Exterior Waste Station w/Discharge Valves	S	S	S	S	S	
Hitch - Capacity 8,000 # w/7-Way Round Tow Connection	S	S	S	S	S	
Antenna - Unidirectional King Controls Jack Antenna	S	S	S	S	S	
Prep for Roof-mounting Satellite Dish	S	S	S	S	S	
Slideout Box Topper Awnings	S	S	S	S	S	
KING Satellite System w/Dish Network Receiver	0	0	0	0	0	

	28A	29M	32S	34J	35R	
INTERIOR	Main Battery Disconnect - House and Chassis	S	S	S	S	S
	Theatre Seating	0	N/A	0	0	S
	Hide-A-Loft™ Drop Down Queen Bed (Electric)	S	S	S	S	S
	Manual Night Roller Shades	S	S	S	S	S
	Energy Efficient LED Surface-mount Ceiling, Under Cabinet Lighting	S	S	S	S	S
KITCHEN	Residential Refrigerator w/Inverter	N/A	S	S	S	S
	Refrigerator Dometic 8' cu. ft.	S	N/A	N/A	N/A	N/A
	Three Burner Range w/Oven	S	S	S	S	S
	OTR Microwave	S	S	S	S	S
	Surf-X Countertop	S	S	N/A	N/A	N/A
	Solid Surface Countertop	N/A	N/A	S	S	S
	Top-Mount Single Bowl Sink	N/A	S	N/A	N/A	N/A
	Top-Mount Dual Rectangle Sink	S	N/A	S	S	S
	Residential Single Handle Faucet w/Pullout Sprayer	S	S	S	S	S
	Power Ceiling Vent	S	S	S	S	S
BEDROOM OR BUNK AREA	King Bed w/Bed in Bag Bedding	S	S	S	S	S
	Manual Night Roller Shades	S	S	S	S	S
	120V/USB Port	S	S	S	S	S
	Energy Efficient LED Flush Mount Ceiling Lighting	S	S	S	S	S
	Under Cabinet Reading Lights	S	S	S	S	S
	Washer & Dryer Prep	N/A	N/A	N/A	N/A	S
	Residential Brushed Nickel Faucet	S	S	S	S	S
	Vanity Mirror & Glass Shower Door	S	S	S	S	S
	ABS Shower Pan & Surround	S	S	S	S	S
	Shower Skylight	S	S	S	S	S
	Metal Shower Head and Matching Single Valve Faucet	S	S	S	S	S
	Plastic/Porcelain Foot Flush Toilet	S	S	S	S	S
	Medicine Cabinet	S	S	S	S	S
	Power Roof Vent	S	S	S	S	S
	ENTERTAINMENT	32" Flatscreen LED TV (Bedroom)	S	S	S	S
39" Flatscreen LED TV (Living Area)		S	S	S	S	S
50" Flatscreen LED TV (Living Area)		N/A	N/A	N/A	N/A	S
Ceiling Speakers - Living Room		S	S	S	S	S
Bluetooth Coach System in Bedroom w/Exterior Speakers		S	S	S	S	S
Exterior Entertainment Center w/50" TV		S	S	S	S	S
Single Roof Mount 15,000 AC w/Chille Grill		S	S	S	N/A	N/A
Dual 13,500 BTU Air Conditioners		N/A	0	0	S	S
30,000 BTU Furnace		S	S	S	S	N/A
34,000 BTU Furnace		N/A	N/A	N/A	N/A	S
Service: 50-amp		S	S	S	S	S
Converter: 55 AMP Power Converter		S	S	S	S	S
Inverter: Single 1000-2000W (Electronics)		N/A	S	S	S	S
Auto Generator Start		N/A	S	S	S	S
Generator: 4.0kW Onan Quiet		S	S	S	N/A	N/A
Generator: 5.5kW Onan Quiet	N/A	0	0	S	S	
ELECTRIC & UTILITIES	Batteries: 6V Deep Cycle House Batteries (2)	S	S	S	S	S
	Master Battery Disconnect Switch	S	S	S	S	S
	Water Pump: 12V 3GPM High Capacity Shurflo	S	S	S	S	S
	Cable TV/Satellite Hookup	S	S	S	S	S
	Toilet Tank San-T-Flush System	S	S	S	S	S
	Single Location Monitor Panel w/Touch Sensor Tank Monitoring & Battery Readout	S	S	N/A	N/A	N/A
	LP/CO & Smoke Detectors, Fire Extinguisher	S	S	S	S	S
	Solar Pre-wire	S	S	S	S	S
	Exterior GFCI Receptacle in Exterior Storage	S	S	S	S	S
	Illumiplex System w/Touchscreen	N/A	N/A	S	S	S

Product information, photography and illustrations included in this publication were as accurate as possible at the time of printing.

**CSA standards may require substitution or deletion to achieve conformance

RV OWNERCARE

Limited one-year/15,000-mile coach warranty and three-year/45,000-mile structural warranty, whichever occurs first, and it is fully transferable for the first 12 months. RV OWNERCARE is one of the RV industry's most comprehensive programs and includes systems, appliances, components and construction, with no deductible and no service charge.

Chassis Warranty provided by Ford®

YOUR LOCAL DEALER



OUR VERY OWN FLEETWOOD RV MOTORHOME SERVICE CENTERS

At Fleetwood RV, we strive to deliver peace-of-mind at every turn. Our devotion to customer service starts with our trusted dealer network and spans to our own staff of motorhome service professionals at REV Recreation Group's regional technical centers. The motorhome service centers are strategically located throughout the United States to provide you convenient service wherever the road takes you.

Below, you'll find the closest motorhome service center, as well as a list of the other centers. Please visit www.fleetwoodrv.com/motorhome-service-centers to schedule a Service Appointment.

East Coast REV Technical Center
800-509-3417

West Coast REV Technical Center
877-466-6226

ROADSIDE ASSISTANCE. ANYWHERE. ANYTIME.



24/7 CUSTOMER SUPPORT FOR:

- FUEL
- BATTERY
- LOCKSMITH
- TOWING
- SLIDE-OUT ISSUES
- AND MUCH MORE!

1-855-268-0414

REV GROUP

Fleetwood RV is part of REV Recreation Group, a division of REV Group, Inc., a family of 33 industry-leading motor vehicle brands. At REV Group, we innovate, design and build products that connect and protect thousands of people every day—our trusted vehicles are engineered with the utmost rigor and precision to deliver the highest levels of performance, reliability, durability and safety.

DISCLAIMERS

1. GVWR (Gross Vehicle Weight Rating) is the maximum permissible weight of this fully loaded motor home. The GVWR is equal to or greater than the sum of the (UVW) unloaded vehicle weight plus the (OCCC) occupant cargo-carrying capacity.

2. GAWR (Gross Axle Weight Rating) is the maximum permissible loaded weight a specific axle is designed to carry.

3. GCWR (Gross Combined Weight Rating) is the value specified by the motor home manufacturer as the maximum allowable loaded weight of this motor home with its towed vehicle. Towing and braking capacities may be different. Refer to Fleetwood and chassis manufacturer's manuals for complete information.

4. Length measured from front bumper to rear bumper (excludes accessories).

5. Excludes safety equipment and awnings.

6. Motor homes feature a body width over 96" which will restrict your access to certain roads. Before purchasing, you should research any state and/or province road laws which may affect your usage.

7. Tank manufacturer's listed water capacity (WC). Actual propane capacity is 80% of water listing as required by the safety code.

† The chassis manufacturer recommends the installation of a supplemental brake control system to activate the brakes on the vehicle or trailer you are towing. Hitch receiver ratings expressed are maximum for the hitch receiver installed and may require the purchase of additional equipment that is dependent on the weight of the towed load. Consult with hitch receiver manufacturer for further information.

* UVW and OCCC are found on the label containing the federal certification tag in each RV.

** Seatbelts and locations are shown in the brochure for display purposes only. Actual numbers and locations will vary by model.

*** All 2019 REV Recreation Group motorhomes include a limited one year/15,000-mile coach warranty and three-year/45,000-mile structural warranty, whichever occurs first, and is fully transferable for the first 12 months.

FLEETWOOD MOTORHOME ASSOCIATION

As a Fleetwood RV owner, you're invited to become a member of the Fleetwood Motorhome Association (FMA). Becoming a member is the perfect way to meet other Fleetwood owners who love to travel across America and share in the RV lifestyle. Visit the FMA website at www.fma4fun.org to learn more and join the fun.

CONTACT US

To locate a dealer near you, visit our website at www.fleetwoodrv.com or call 1-800-322-8216. We can also be contacted at Fleetwood RV Customer Relations, P.O. Box 1007, Decatur, IN 46733.

IMPORTANT—PLEASE READ: Product information, photography and illustrations included in this publication were as accurate as possible at the time of printing. For further product information and changes, please visit our website at www.fleetwoodrv.com or contact your local Fleetwood RV dealer. Prices, materials, design and specifications are subject to change without notice. All weights, fuel, liquid capacities and dimensions are approximate. Fleetwood RV has designed its recreational vehicles to provide a variety of uses for its customers. Each vehicle features optimal seating, sleeping, storage and fluid capacities. The user is responsible for selecting the proper combination of loads (i.e., occupants, equipment, fluids, cargo, etc.) to ensure that the vehicle's capacities are not exceeded.

www.fleetwoodrv.com

©2018 REV Group, Inc. Printed in the USA, 10/18. Model Year 2019, First Edition.