

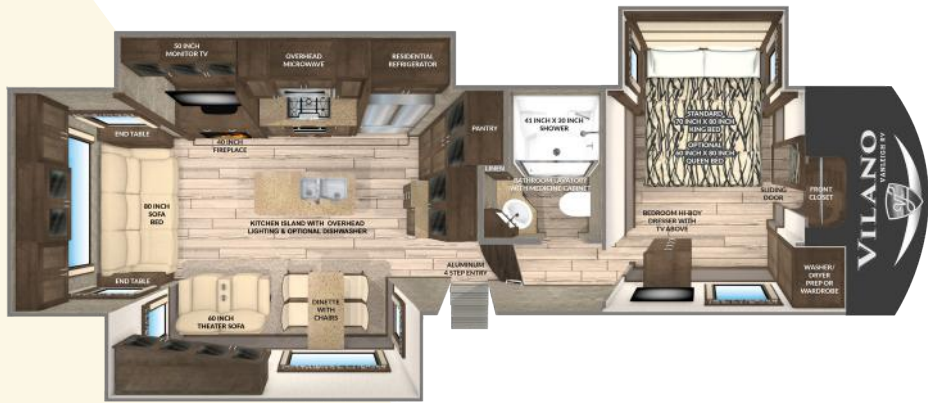
VILANO

2 0 1 9

W A K E U P A N Y W H E R E



320GK VILANO GOURMET KITCHEN



GVWR 16,000
 Dry Weight 12,400*
 Cargo Carrying 3,600
 Width 101"
 Height 12' 11" **
 Length 34' 11" ***
 Fresh Water Cap. 70 gal
 Grey Water Cap. 90 gal
 Black Water Cap. 45 gal
 Water Heater 10 gal
 Furnace 42K BTU
 LP Cap. 60 lbs
 Hitch Weight 2,600***

- * unloaded and based off of an average
- ** to top of A/Cs
- *** from pinbox to rear ladder based on standard build, no options
- **** unloaded and based off of an average

STANDARD SOLID WOOD Cabinetry

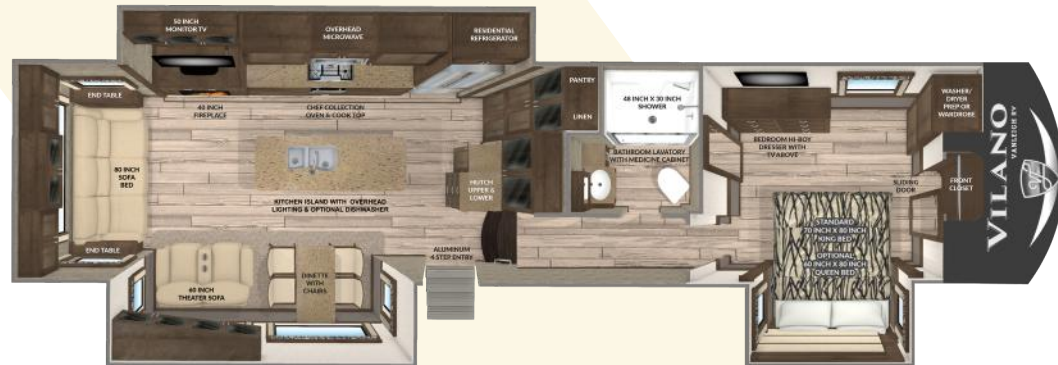
FOR MORE INFORMATION GO TO: vanleighrv.com



All of our wood cabinetry is made of solid wood and is manufactured on-site in the Vanleigh Cabinet Shop.



360RL VILANO REAR LIVING



GVWR 16,000
 Dry Weight 13,800*
 Cargo Carrying 2,200
 Width 101"
 Height 12' 11" **
 Length 39' 11" ***
 Fresh Water Cap. 70 gal
 Grey Water Cap. 90 gal
 Black Water Cap. 45 gal
 Water Heater 10 gal
 Furnace 42K BTU
 LP Cap. 60 lbs
 Hitch Weight 2,800****

- * unloaded and based off of an average
- ** to top of A/Cs
- *** from pinbox to rear ladder based on standard build, no options
- **** unloaded and based off of an average

370GB VILANO GRAND BAR



GVWR 16,000
 Dry Weight 14,000*
 Cargo Carrying 2,000
 Width 101"
 Height 12' 11" **
 Length 38' 11" ***
 Fresh Water Cap. 70 gal
 Grey Water Cap. 90gal
 Black Water Cap. 45gal
 Water Heater 10gal
 Furnace 42K BTU
 LP Cap. 60lbs
 Hitch Weight : 3100****

- * unloaded and based off of an average
- ** to top of A/Cs
- *** from pinbox to rear ladder based on standard build, no options
- **** unloaded and based off of an average

369FB VILANO FRONT BATH & HALF



GVWR 16,000
 Dry Weight 14,100*
 Cargo Carrying 1,900
 Width 101"
 Height 12' 11" **
 Length 38' 11" ***
 Fresh Water Cap. 70 gal
 Grey Water Cap. 90gal
 Black Water Cap. 45gal
 Water Heater 10gal
 Furnace 42K BTU
 LP Cap. 60lbs
 Hitch Weight : 3100****

- * unloaded and based off of an average
- ** to top of A/Cs
- *** from pinbox to rear ladder based on standard build, no options
- **** unloaded and based off of an average

375FL VILANO FRONT LIVING



GVWR 16,500
 Dry Weight 14,800*
 Cargo Carrying 1,700
 Width 101"
 Height 12' 11" **
 Length 40' 6" ***
 Fresh Water Cap. 54 gal
 Grey Water Cap. 90 gal
 Black Water Cap. 45 gal
 Water Heater 10 gal
 Furnace 42K BTU
 LP Cap. 60 lbs
 Hitch Weight 3,300****

- * unloaded and based off of an average
- ** to top of A/Cs
- *** from pinbox to rear ladder based on standard build, no options
- **** unloaded and based off of an average

LIVING AREA

- Full Profile Ceiling Throughout
- Full Overlay Hardwood Cabinetry and Faceframes
- Hardwood Slide-Out Fascia Throughout
- Hardwood Window Valances Throughout
- 8'0" Main Floor Slideout Boxes
- Multiplex Wiring System w/ Digital Homescreen
- Soft Touch Padded Vinyl Ceiling Throughout
- Recessed LED Ceiling Lighting Throughout
- Roller Shades (Night)
- Dimming Function on Living and Bedroom Area Lighting
- High Quality Franklin Furniture, Made in the U.S.A.
- Ceiling Fan
- Dirt Devil Central Vac System

KITCHEN

- Solid Surface Kitchen Countertops
- Solid Surface Sink and Range Covers
- Residential Kitchen Faucet with Pull Down
- Stainless Steel Microwave and Oven
- Residential Chef Collection Burner Range
- 18 Cu Ft. Samsung French Door Refrigerator
- 1,000 Watt Pure Sine Wave Inverter
- Stainless Drawer Guides
- Freestanding, Solid Surface Dinette Table with 4 Chairs
- New Galley Window Featured in all Vanleigh Floorplans
- Oversized 70/30 Stainless Steel Sink
- Galley Area Air Automatic Ceiling Vent
- Hardwood Ceiling Décor Package with Recessed LED Lighting
- Tile Backsplashes
- Convection Microwave
- Residential Kitchen Faucet with Pull-Down Sprayer

HOME ENTERTAINMENT

- 50 in LED TV in Living Area (55" LED TV in the 375FL Living Area)
- Sound Bar with Surround Sound in Living Area
- Entertainment Center with Bluetooth, DVD, Aux Controls
- Exterior Speakers
- 32" LED Bedroom TV
- PreWire for Solar Panels
- King Jack Digital Antennae

BEDROOM

- Memory Foam King Mattress
- Dual USB Ports in Nightstands
- Backlit Handrail to Bedroom
- Solid Vinyl Flooring Throughout Bedroom
- Hardwood Window Valances
- Residential Hardwood Headboard
- Hardwood Dresser
- Full Sized Wardrobe with Motion Sensored Lighting
- Full-Sized Underbed Storage Area

HEATING AND COOLING

- Dual Low-Pro 15K BTU A/Cs Standard
- Prewire for Third 15K BTU A/C with Triple Zone Thermostat
- 42K BTU Furnace
- 7200 BTU Electric Fireplace
- R-45 Floor and Roof Insulation
- Whisper Quiet A/C System
- Fully Enclosed and Heated Underbelly with Heat Return
- 12V Electric Tank Heaters
- 10 Gallon Gas/Electric Quick Recovery Hot Water Heater
- 16" Wide Return A/C Ducts for Max Airflow

EXTERIOR AND CONSTRUCTION

- Noble T60 High Gloss Fiberglass Exterior
- Tubular Aluminum Framed Sidewalls
- 12V Electric Dump Gates for Black and Gray Tank with Manual Override
- 16" on Center Tubular Aluminum Floor
- 16" on Center Aluminum Roof Joists
- Framed, Laminated, and Insulated Slide Box Floors and Ceilings
- Laminated Slide Box End Walls
- Aluminum A/C Boxes Welded to Frame
- Roof Backer For All Crown Molding
- Tubular Aluminum Upper Support Wall
- Dual Copper Water Manifolds
- Powdercoated Aluminum Wet-Bay
- Standard "G" Rated Tires
- Labeled Wire Harnesses
- Protective Wire Looms
- LED Exterior Lighting System
- Pre-Wire for Backup Camera
- Slam-Latch Baggage Doors
- Motion Sensored Lighting in Pass Thru Compartment
- Electric Power Cord Reel

OPTIONAL EQUIPMENT

- Generator Prep
- 5.5 Onan Marquis Gold LP Generator w/ Prep
- Truma "On-Demand" Water Heater
- Pre Wire for Traveler Satellite
- Residential Dishwasher (excluding the 375FL)
- Splendide Front Load Washer & Dryer
- 3rd 15K BTU Low Profile A/C
- Heat Pump (per A/C)
- Second Awning Mounted to Slidebox
- Dual Pane Windows
- Solar Shades (Day Shades)
- 4 Door Gas/Electric RV Refrigerator
- Queen Bed
- Ultra Sheen Cabinet Finish

Some interior furnishings not included. Some photos shown in literature have optional equipment. All options may not be available in every model. Because of progressive improvements, specifications, standard and optional equipment are subject to change without notice or obligation. For a complete and up-to-date list of available options and specifications, as well as Vanleigh's full line of RVs, visit vanleighrv.com.

FOR MORE INFORMATION GO TO:

vanleighrv.com

26 Industrial Drive | Burnsville, MS 38833
Phone 662-612-4040 | Fax 662-655-0913

customercare@vanleighrv.com · www.vanleighrv.com



VANLEIGH

TIFFIN