

# QUANTUM™



HOT STREAM **HD**



LET IT RIDE **HD**



JOKERS WILD PARTIAL PAINT



DOUBLE DOWN PARTIAL PAINT



BLACK ONYX FULL-BODY PAINT (LF31, PD31 & WS31)



TOPAZ BLUE FULL-BODY PAINT (LF31, PD31 & WS31)

SPRINTERS



HOT STREAM **HD**



LET IT RIDE **HD**



BLACK ONYX FULL-BODY PAINT



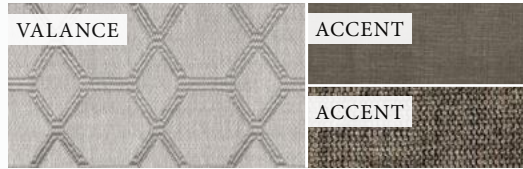
TOPAZ BLUE FULL-BODY PAINT



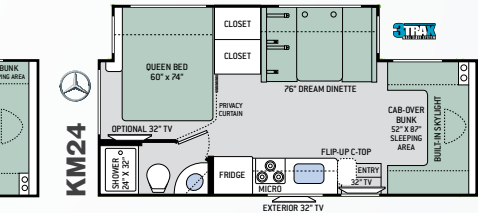
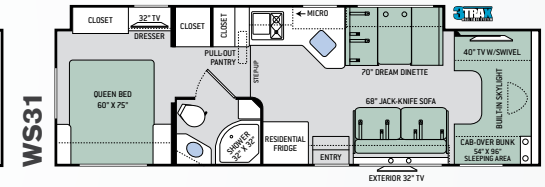
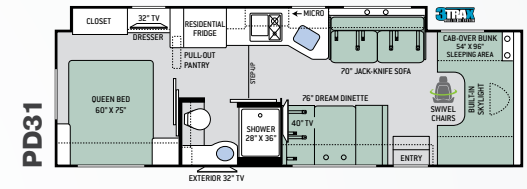
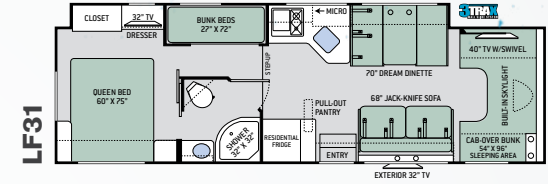
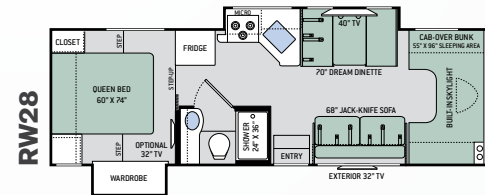
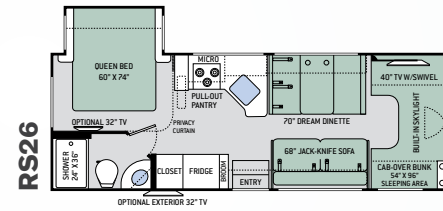
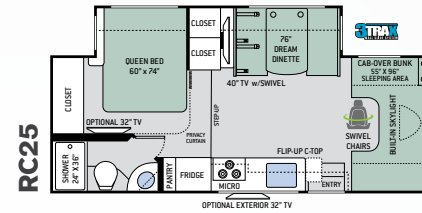
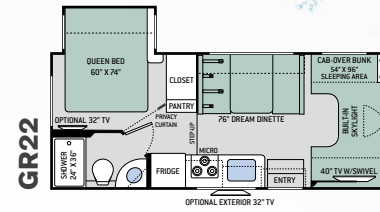
ARTIC FROST



CLOUD NINE



MID TOWN TAUPE



# Class C Featured Highlights

## CONSTRUCTION & EXTERIOR

- Automatic Leveling Jacks (LF31, PD31 & WS31)
- HD-MAX™ Exterior with Graphics Package (GR22, RC25, RS26 & RW28)
- MEGA-Storage™ Compartment (GR22, RC25, RS26 & RW28)
- Portable Table in MEGA-Storage™ Compartment (RW28)
- Framed Slider Windows (GR22, RC25, RS26 & RW28)
- Frameless Slider Windows (PD31, LF31 & WS31)

## CONSTRUCTION & EXTERIOR OPTIONS

- Electric Stabilizing System (OPT GR22, RS26 & RW28 / STD RC25)
- Partial Paint on HD-MAX™ Exterior with Graphics Package (STD LF31, PD31 & WS31)
- Full Body Paint Package with Gel-Coat Sidewalls & Invisible Front Mask Paint Protection - Requires Heated/Remote Exterior Mirrors with Integrated Side View Cameras\*\* (N/A GR22)

## AUTOMOTIVE & COCKPIT

- Touchscreen Dash Radio with Back-Up Monitor & Integrated Camera
- Leatherette Captain's Chairs (GR22, RS26, RW28, LF31 & WS31)
- Leatherette Swivel Captain's Chairs with Filler Cushions (RC25 & PD31)
- Deluxe Exterior Mirrors (GR22, RC25 & RS26)
- Emergency Engine Start Switch
- Aluminum Running Boards
- Stainless Steel Wheel Liners
- Valve Stem Extenders

## AUTOMOTIVE & COCKPIT OPTIONS

- Heated/Remote Exterior Mirrors w/Integrated Side View Cameras\*\* (OPT GR22, RC25, & RS26 / STD RW28, LF31, PD31 & WS31)
- Power Driver's Seat (LF31 & WS31)
- Cockpit Carpet Mat

## INTERIOR

- Leatherette Jack-Knife Sofa (RS26, RW28, LF31, PD31 & WS31)
- Leatherette Dream Dinette® Booth
- Double Door Gas/Electric RV Refrigerator with Smoked Acrylic Panel Inserts (GR22, RC25, RS26 & RW28)
- 40" TV on Manual Swivel in Cab-Over (GR22, RS26, LF31 & WS31)
- 40" TV in Living Area (RC25, RW28, & PD31)
- 32" TV in Bedroom (LF31, PD31 & WS31)
- Two (2) 15" TVs w/DVD Player in Bunk Bed Area (LF31)
- Blu-Ray Player in Living Area
- 11 cu. ft. Residential Refrigerator with Ice Maker (PD31 & LF31)
- 16 cu. ft. Residential Refrigerator with Ice Maker (WS31)
- Recessed 3-Burner Gas Cooktop with Glass Cover (GR22, RC25, RS26 & RW28)
- 2-Burner Gas w/Single Induction Cooktop (LF31, PD31 & WS31)
- Microwave Oven (GR22, RC25, RS26 & RW28)
- 30" Over-the-Range Convection Microwave Oven (LF31, PD31 & WS31)
- Flip-Up Countertop Extension (RC25)
- Pop-Up Countertop Outlet & Charging Center for Electronics (LF31, PD31 & WS31)
- Pantry (GR22, RC25, RS26, LF31, PD31 & WS31)
- Solid Surface Kitchen Countertops
- 12-volt Attic Fan with Cover in Kitchen
- Denver Mattress® Queen Size Bed
- Bedroom Charging Station and Dedicated CPAP Machine Outlet with Storage Location
- 12-volt Attic Fan with Cover in Bedroom
- Power Bath Vent with Wall Switch in Bathroom

## INTERIOR OPTIONS

- Cab-Over Child Safety Net
- 12-volt Attic Fan with Cover in Cab-Over Bunk
- Single Child Safety Tether in Dinette
- Recessed 3-Burner Gas Cooktop/Over with Glass Cover (GR22, RC25, RS26 & RW28)

- Convection Microwave Oven (GR22, RC25, RS26 & RW28)
- 32" LED TV in Bedroom (GR22, RC25, RS26 & RW28)
- 32" LED Exterior TV on Manual Swivel with Bluetooth® Sound Bar (STD - RW28, LF31, PD31 & WS31)

## ELECTRICAL & PLUMBING

- Onan® RV QG 4000 Gas Generator
- Automatic Generator Start (LF31, PD31 & WS31)
- 30-amp Shoreline Power Cord
- 1800-watt Inverter (LF31, PD31 & WS31)
- Dual Auxiliary House Batteries with Tray that Holds up to 4 Batteries (LF31, PD31 & WS31)
- Solar Charge Controller - Solar Panel Ready
- 13,500 BTU Roof Front Air Conditioner (GR22, RC25 & RS26)
- 15,000 BTU Roof Front Air Conditioner (RW28, LF31, PD31 & WS31)
- Exterior LP Connection
- Whole Coach Water Filtration System (LF31, PD31 & WS31)
- 1" Fresh Water Tank Drain
- 360° Siphon RV Holding Tank Vent Cap
- Black Tank Flush System (LF31, PD31 & WS31)
- Enclosed Sewer Area for Sewer Tank Valves (LF31, PD31 & WS31)
- Outside Shower
- Rapid Camp™ Wireless Control System (LF31, PD31 & WS31)

## ELECTRICAL & PLUMBING OPTIONS

- 15,000 (IPO 13,500) BTU Roof Front Air Conditioner (GR22, RC25 & RS26)
- Holding Tanks with Heat Pads (STD LF31, PD31 & WS31)
- Second Auxiliary House Battery (STD RW28, LF31, PD31 & WS31)

For a complete listing of available features visit [thormotorcoach.com/quantum](http://thormotorcoach.com/quantum).



# Sprinter Featured Highlights

## CONSTRUCTION & EXTERIOR

- Electric Stabilizing System
- One-Piece Fiberglass Front Cap with LED Accent Lighting
- HD-MAX™ Exterior with Graphics Package
- Lighted Rotocast Storage Compartments
- Flush Mount Radius Compartment Doors
- Power Patio Awning with Integrated LED Lighting

## CONSTRUCTION & EXTERIOR OPTIONS

- Full-Body Paint Package with Invisible Front Mask Paint Protection

## AUTOMOTIVE & COCKPIT

- Touchscreen Dash Radio with Back-Up Monitor & Integrated Camera
- Deluxe Heated/Remote Exterior Mirrors
- Tilt Leather Steering Wheel with Audio Buttons to Control Dash Radio
- Leatherette Swivel Captain's Chairs
- Cockpit Carpet Mat
- Stainless Steel Wheel Liners
- Keyless Entry System
- Valve Stem Extenders

## INTERIOR

- 40" TV in Living Area
- 32" Exterior TV on Manual Swivel with Bluetooth® Sound Bar
- Blu-Ray Player in Living Area
- Cab-Over Bunk Ladder
- Leatherette Dream Dinette® Booth
- Double Door Gas/Electric RV Refrigerator with Smoked Acrylic Panel Inserts
- 3-Burner Gas Cooktop with Glass Cover
- Convection Microwave Oven
- Solid Surface Kitchen Countertop
- 12-volt Attic Fan with Cover in Kitchen
- Denver Mattress® Queen Size Bed
- Bedroom Charging Station and Dedicated CPAP Machine Outlet with Storage Location
- 12-volt Attic Fan with Cover in Bathroom & Bedroom

## INTERIOR OPTIONS

- 32" TV in Bedroom
- Cab-Over Child Safety Net
- 12-volt Attic Fan with Cover in Cab-Over Bunk
- Single Child Safety Tether in Dinette

## ELECTRICAL & PLUMBING

- Onan® RV QG 3600 LP Generator
- 30-amp Shoreline Power Cord
- Automatic Shoreline-to-Generator Transfer Switch
- Battery Disconnect Switch
- 13,500 BTU Roof Front Air Conditioner
- Systems Control Center
- Exterior LP Connection
- Solar Charge Controller - Solar Panel Ready
- Tankless Water Heater
- 1" Fresh Water Tank Drain
- 360° Siphon RV Holding Tank Vent Cap
- Black Tank Flush System
- Outside Shower

## ELECTRICAL & PLUMBING OPTIONS

- Onan® RV QD 3200 Diesel Generator
- 15,000 (IPO 13,500) BTU Roof Front Air Conditioner
- Holding Tanks with Heat Pads
- Second Auxiliary House Battery



For a complete listing of available features, visit [thormotorcoach.com/quantum-sprinter](http://thormotorcoach.com/quantum-sprinter).

|                                     | CLASS C         |              |                 |              |              |              |              | SPRINTER      |
|-------------------------------------|-----------------|--------------|-----------------|--------------|--------------|--------------|--------------|---------------|
|                                     | GR22            | RC25         | RS26            | RW28         | LF31         | PD31         | WS31         | KM24          |
| Chassis                             | Ford / Chevy    | Ford         | Ford / Chevy    | Ford         | Ford         | Ford         | Ford         | Mercedes-Benz |
| Gross Vehicle (GVWR)                | 12,500 / 12,300 | 14,500       | 12,500 / 14,200 | 14,500       | 14,500       | 14,500       | 14,500       | 11,030        |
| Gross Combined (GCWR)               | 18,500 / 18,000 | 22,000       | 18,500 / 20,000 | 22,000       | 22,000       | 22,000       | 22,000       | 15,250        |
| Wheel Base                          | 158" / 159"     | 178"         | 183" / 184"     | 212"         | 223"         | 212"         | 223"         | 170.3"        |
| Exterior Length (w/o ladder)        | 24' / 24'-6"    | 26'-3"       | 27'-6" / 28'    | 30'-2"       | 32'-7"       | 31'-3"       | 32'-2"       | 25'-8"        |
| Exterior Height (w/AC)              | 11"             | 11'-2"       | 11'-2"          | 11'-2"       | 11'-2"       | 11'-2"       | 11'-2"       | 12'-1"        |
| Exterior Width (w/o mirrors)        | 99"             | 99"          | 99"             | 99"          | 99"          | 99"          | 99"          | 90"           |
| Interior Height (living area)       | 84"             | 84"          | 84"             | 84"          | 84"          | 84"          | 84"          | 84"           |
| Awning Size                         | 15'             | 16'          | 18'             | 14'          | 16'          | 16'          | 16'          | 15'           |
| Fuel (gal)                          | 55 / 57         | 55           | 55 / 57         | 55           | 55           | 55           | 55           | 26.4          |
| LPG (lbs)                           | 40.9            | 40.9         | 40.9            | 40.9         | 40.9         | 40.9         | 40.9         | 68.2          |
| Fresh/Waste/Gray Water (gal)        | 40 / 29 / 25    | 40 / 34 / 37 | 40 / 29 / 25    | 40 / 26 / 32 | 40 / 28 / 28 | 40 / 28 / 28 | 40 / 28 / 28 | 30 / 24 / 38  |
| Water Heater (gal)                  | Tankless        | Tankless     | Tankless        | Tankless     | Tankless     | Tankless     | Tankless     | Tankless      |
| Furnace (BTUs)                      | 19,000          | 30,000       | 30,000          | 30,000       | 30,000       | 30,000       | 30,000       | 30,000        |
| Exterior Storage Capacity (cu. ft.) | 30.9            | 45.1         | 40.0            | 99.9         | 57.5         | 52.9         | 54.6         | 48.5          |
| Hitch Weight Rating (lbs)           | 8,000           | 8,000        | 8,000           | 8,000        | 8,000        | 8,000        | 8,000        | 5,000         |



IMPORTANT-PLEASE READ: This brochure reflects product design, fabrication, material, components and specifications at the date of printing, which date is disclosed below. Please visit us online at [ThorMotorCoach.com](http://ThorMotorCoach.com) or consult with your selling dealership for the latest in standards, options, specification and technical information. Photographs in the brochure may depict optional equipment or may only be available in certain floor plans. Components, appliances and the chassis may have been manufactured in a calendar year before the vehicle's designated model year. All capacities are approximate. The actual length of the vehicle may differ from that indicated in the brochure due to variances in the manufacturing processes and/or installed components. All dry weights are based on standard model features and do not include optional features or equipment. Component part and appliance manufacturers issue limited warranties covering portions of the vehicle not covered under the limited warranty we issue. Copyright Thor Motor Coach, Inc. © MY 04/13/2018

Made to fit.

P.O. Box 1486, Elkhart, IN 46515 Sales Department: 800.860.5658

[thormotorcoach.com](http://thormotorcoach.com)

