

# WAYFARER

2021









## Ready when you are.

The all-new Wayfarer offers more of everything you want in a Class C, along with the luxurious styling and amenities synonymous with Tiffin. Designed inside and out with your every need in mind, it features a spacious interior, industry-standard safety features, and high-performance handling with the Mercedes-Benz® chassis. Plus, the Wayfarer's standout style gets a striking boost, thanks to its all-new redesigned look.



Clockwise from top: MBUX infotainment center; Dashboard smartphone integration; Queen sofa Murphy bed; Driver's compartment. All interiors shown are 25 RW with Linen cabinets, Soho décor.

## Living Area

Relaxing is a breeze in the Wayfarer. With distinct floor plans offering a variety of sleep options to choose from, as well as, our ample storage and closet spaces mean you can bring along clothing and gear for every type of adventure and occasion. And our new electric Murphy bed in the 25 RW allows for a walk around bed, electric controls, and over-the-bed cabinets.

**Clockwise from top:** Convection microwave and 6.5 cubic foot refrigerator; Living area; Kitchen; Bathroom sink. All interiors shown are 25 RW with Linen cabinets, Soho décor.





## Premium Paint System

Our eight-step full-body paint system features premium grade paints sealed with three layers of superclear coat with ultraviolet protection. An additional layer of scratch-resistant plastic coating protects the front of the coach, stairwell, and entry door lock.



HARMONY



CONQUEST



PEBBLE CREEK



PERDIDO



REGAL BLUE

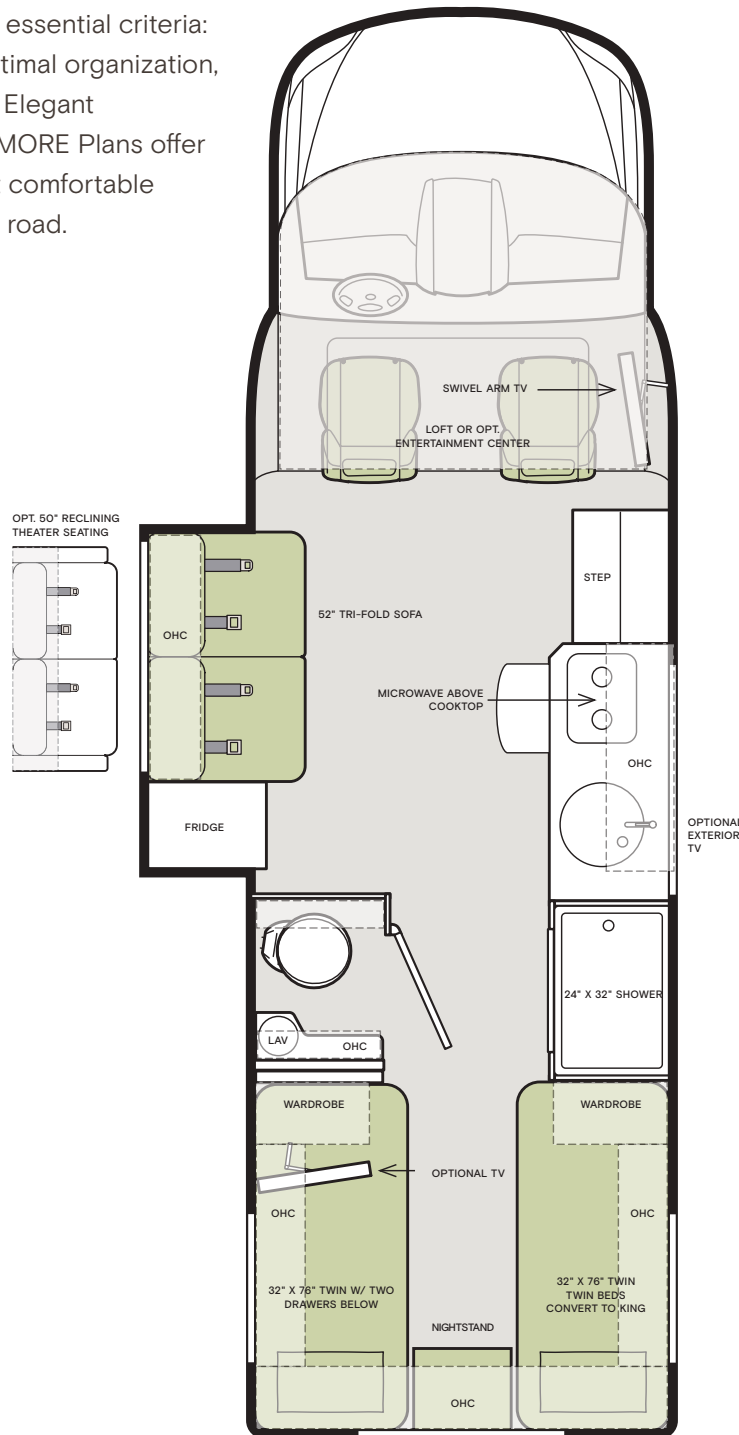


SEA MIST

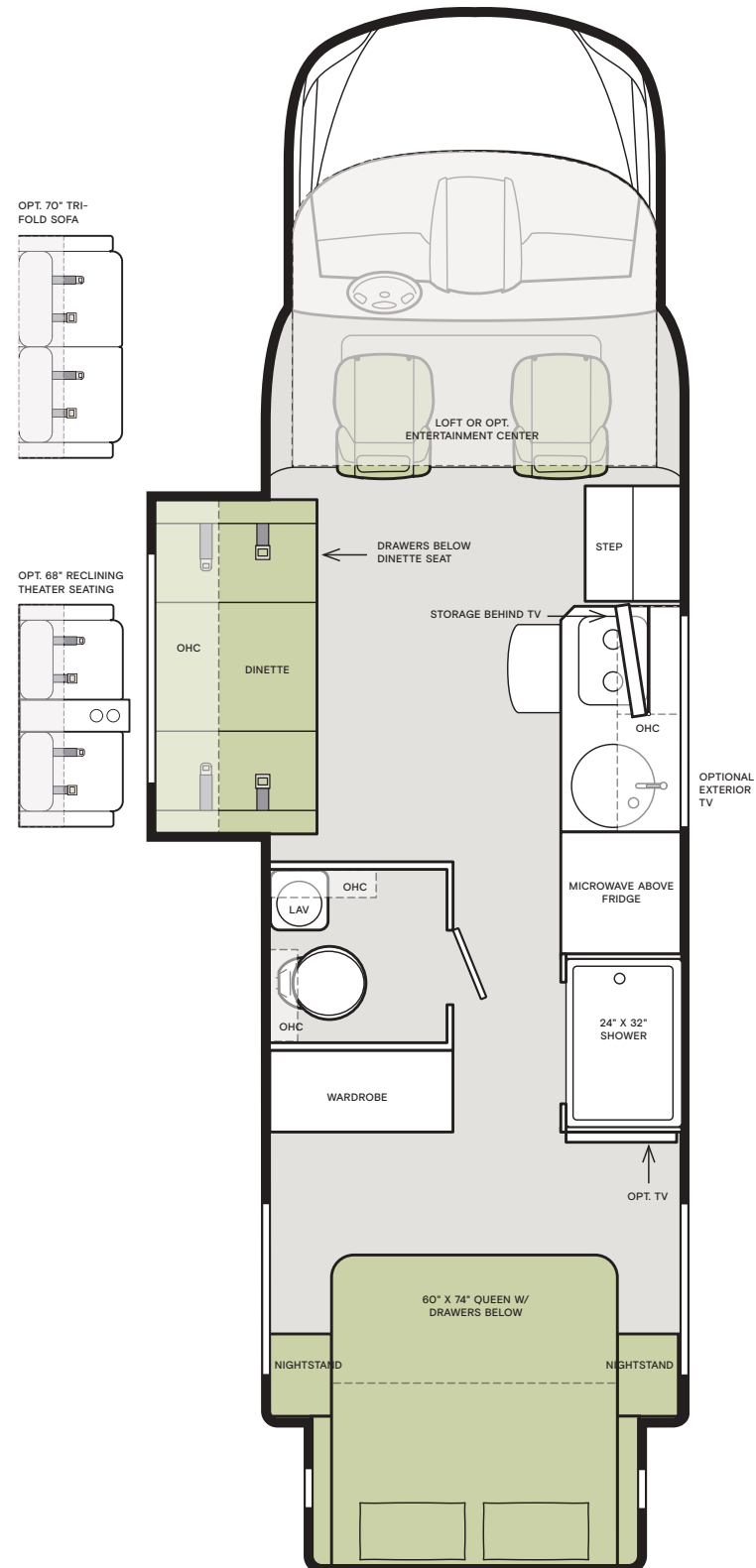
## Floor Plans

The design of every Wayfarer floor plan must meet four essential criteria: Maximum space, Optimal organization, Relaxation plus, and Elegant atmosphere. Tiffin's MORE Plans offer your family the most comfortable layout for life on the road.

### 25 TW

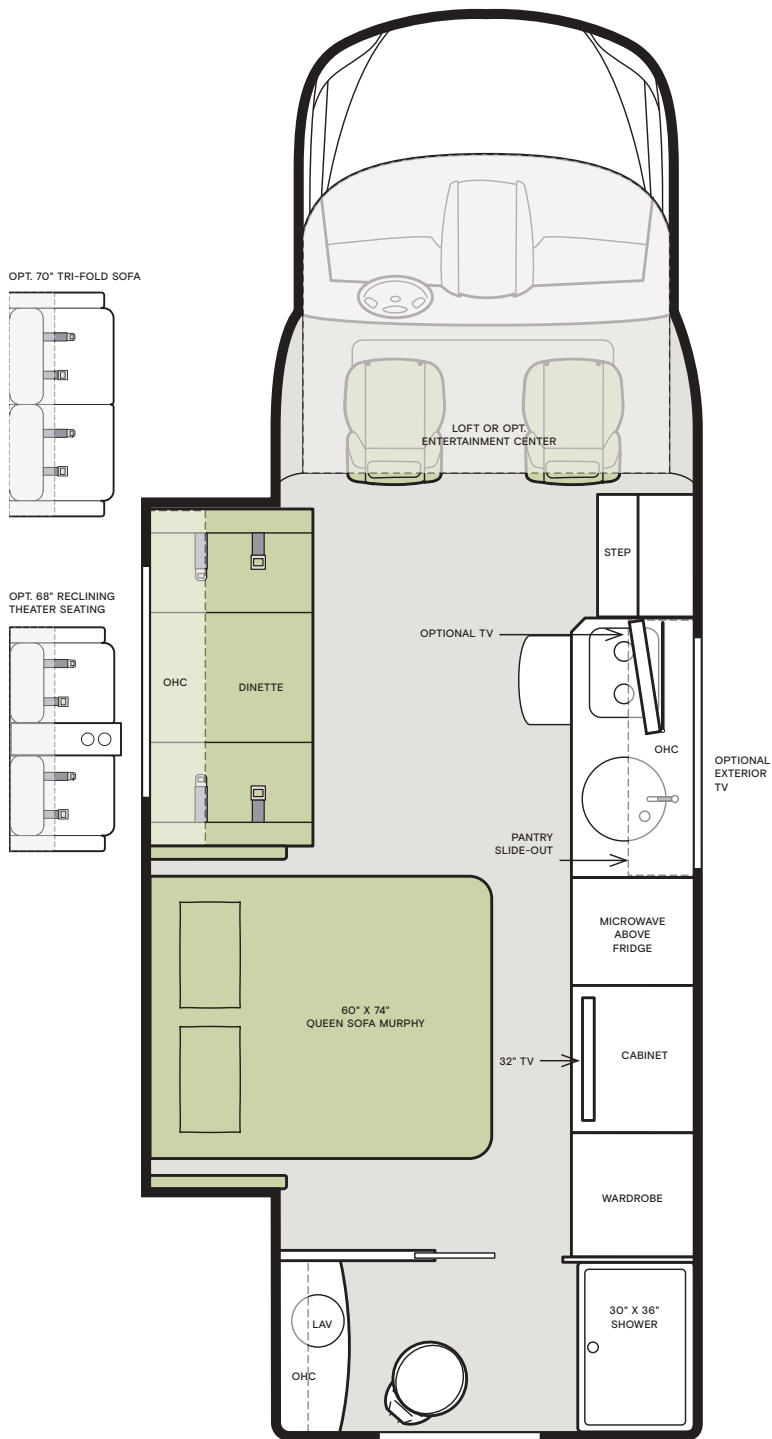


### 25 SW

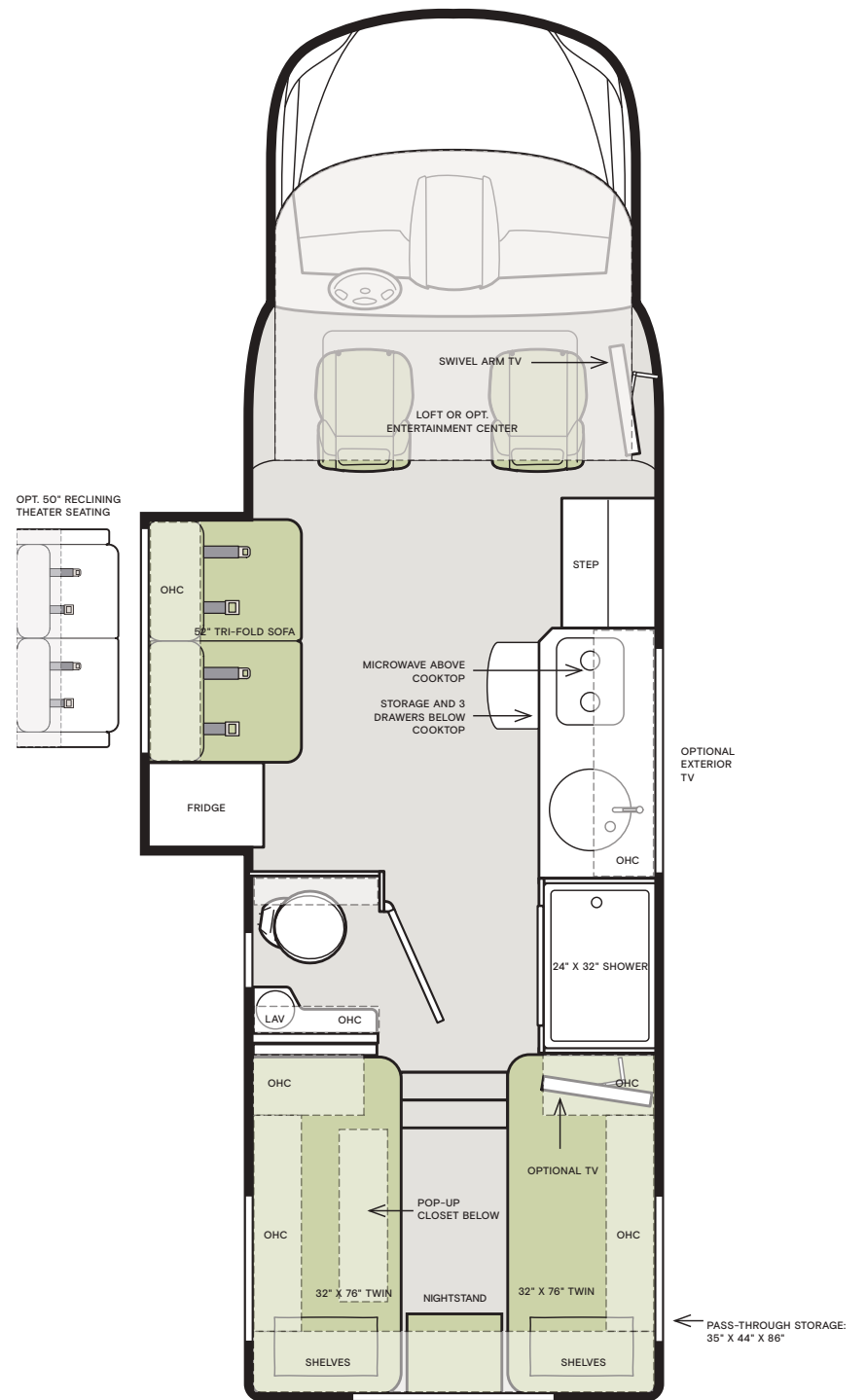


If optional furniture combinations are selected, window locations may vary from diagram shown. All options may not be available in every model. Because of progressive improvements and specifications, standard and optional equipment are subject to change without notice or obligation. For a complete and up-to-date list of available options and specifications, visit [tiffinmotorhomes.com](http://tiffinmotorhomes.com).

# 25 RW



# 25 LW



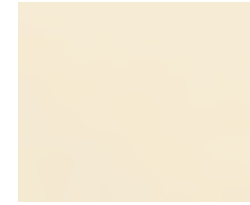
## Interior Décor

Make it all yours. Personalize your décor experience with the Wayfarer's customization options. Choose between our four décor packages, as well as handcrafted wood cabinetry. The Wayfarer's luxury design options allow you to arrive and live in style, wherever your travels and adventures take you.

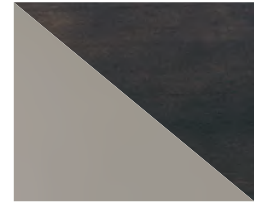
## CABINETS



RUSSETT



LINEN



ACIER GREY/CHATEAU

## OASIS



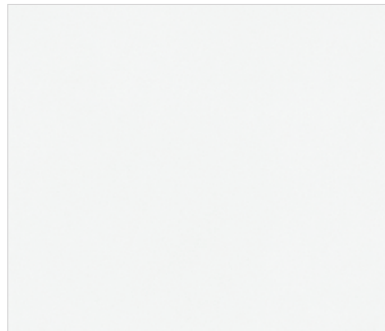
WINDOW TREATMENT



LEATHER - WHITE SAND<sup>1</sup>



FLOOR

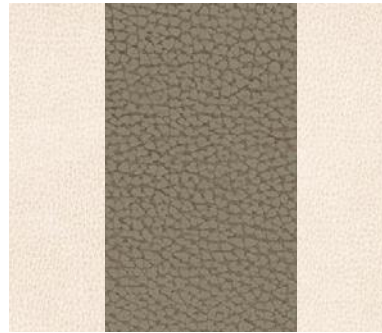


COUNTERTOP



MASTER SUITE

## SOHO



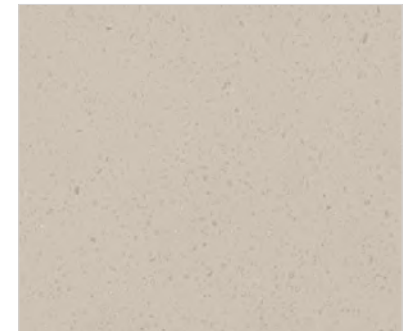
WINDOW TREATMENT



LEATHER - TAVERN<sup>1</sup>



FLOOR



COUNTERTOP



MASTER SUITE

<sup>1</sup> Recommended leather option for this suite. Other leather options available.



## WALLCOVERING



RESTON IVORY

## CHAMPAGNE



WINDOW TREATMENT



LEATHER - LINEN <sup>1</sup>

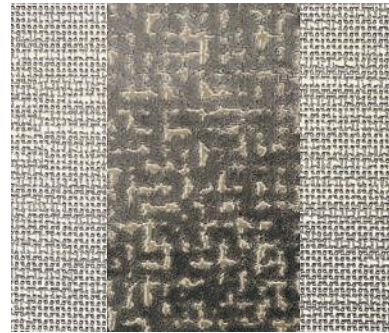


FLOOR



COUNTERTOP

## STERLING



WINDOW TREATMENT



LEATHER - GRAY <sup>1</sup>



FLOOR



COUNTERTOP



MASTER SUITE



MASTER SUITE



The 2021 Wayfarer is built on the Mercedes Sprinter chassis. This chassis helps keep drivers safe with attention assist, lane keeping assist, collision prevention assist, and load adaptive electronic stability (esp).

- Automatic Transmission 7G-Tronic™
- 24.5 Gallon Fuel Tank
- Improved Lane Keeping Assist
- Instrument Cluster with Color Display

- Traffic Sign Assist
- Electronically Adjustable Driver and Passenger Seat
- Free Map Data Updates for Three Years

- Distance Regulator Distronic Plus
- Adaptive Cruise Control
- Command Online
- Heated Driver and Passenger Seat

For a complete and up-to-date list of available options and specifications, visit [tiffinmotorhomes.com](http://tiffinmotorhomes.com).



# Specifications

WEIGHTS AND MEASURES	25 TW	25 RW	25 LW	25 SW
Overall Length (approximately) <sup>1</sup>	25' 8"	25' 8"	25' 8"	25' 8"
Overall Height (max.)	11' 4"	11' 4"	11' 4"	11' 4"
Interior Height	80"	80"	80"	80"
Overall Width <sup>1</sup>	90"	90"	90"	90"
Interior Width	87"	87"	87"	87"
Fresh Water (gal.)	38	30	32	38
Black Water (gal.)	28	28	28	28
Grey Water (gal.)	32	36	32	33
LPG Tank (gal.)	12	12	12	12
Basement Storage (cubic ft – app.)	68	37	130	54
Trailer Hitch Capacity <sup>2</sup>	5,000 lb	5,000 lb	5,000 lb	5,000 lb

<sup>1</sup> The approximated coach width and length does not include side view mirrors.

<sup>2</sup> Tow ratings and ability are subject to gross combined weight ratings on the tow vehicle.

PLUMBING AND ELECTRICAL				
<ul style="list-style-type: none"> <li>Truma® Comfort Plus Instant Hot Water Heater</li> <li>Spyder Multiplex Coach Control System</li> <li>HD TV Antenna with Amplifier</li> <li>Two 12 V House Batteries (Group 27/180 Amp Hours)</li> <li>30 Amp 110 V House Service</li> <li>Power Cord – 30'</li> </ul>	<ul style="list-style-type: none"> <li>Permanently Attached</li> <li>3.2 kw Diesel Generator</li> <li>1000 Watt Inverter Pure Sine</li> <li>110 V and 12 V House Load Center with Power Converter</li> <li>HD Over-the-air TV Antenna</li> <li>Prep for Satellite</li> <li>Pre-wired for Solar Panels</li> </ul>	<ul style="list-style-type: none"> <li>13.5 K Mid Air Conditioner</li> <li>Park Cable and Ground Satellite Hook-up</li> <li>Wall-mount Thermostat with Built-in Temperature Sensor</li> <li>30 K BTU Propane Ducted Furnace</li> <li>12 V Engineered Wiring Harnesses</li> <li>Heated Holding Tanks</li> </ul>		

ELECTRICAL OPTIONS	25 TW	25 RW	25 LW	25 SW
15 K Mid Air Conditioner with Heat Pump	O	O	O	O
Complete Solar System with 190 Watt Solar Panel	O	O	O	O
2000 Watt Inverter Pure Sine	O	O	O	O
Wi-Fi Ranger	O	O	O	O
In-motion Satellite	O	O	O	O
Lithium Battery Drop-in Solution	O	O	O	O

EXTERIOR		
<ul style="list-style-type: none"> <li>Girard® 16' Wind Sensor Awning with Speakers</li> </ul>	<ul style="list-style-type: none"> <li>Automatic Lights in Exterior Compartment Doors</li> </ul>	<ul style="list-style-type: none"> <li>Entrance Door Assist Handle</li> </ul>

INTERIOR					
<ul style="list-style-type: none"> <li>Separate Speaker Zones</li> <li>Stereo System</li> <li>LED Lights</li> </ul>	<ul style="list-style-type: none"> <li>Privacy Shades</li> <li>2 Captain's Chair Lounge Cushions</li> <li>Soft Vinyl Ceiling</li> </ul>	<ul style="list-style-type: none"> <li>Combination Carbon Monoxide and Propane Detector</li> <li>Fan-Tastic Vent Fan</li> </ul>			
INTERIOR OPTIONS		25 TW	25 RW	25 LW	25 SW
Handcrafted Cabinetry	Russet <sup>3</sup>	O	O	O	O
	Acier Grey/Chateau <sup>4</sup>	O	O	O	O
	Linen <sup>5</sup>	O	O	O	O
Fabric Suites	Oasis	O	O	O	O
	Soho	O	O	O	O
	Champagne	O	O	O	O
	Sterling	O	O	O	O
Wallcovering	Reston Ivory	S	S	S	S
Central Vacuum System with Retractable Hose		O	O	O	O

<sup>3</sup> offered with Oasis, Soho, or Champagne

<sup>4</sup> offered with Sterling only

<sup>5</sup> offered with Oasis, Soho, Champagne, or Sterling

MERCEDES CHASSIS		
<ul style="list-style-type: none"> <li>3.0 6-Cylinder Turbo Diesel Engine with 7-speed Automatic Tip Shift Speed Transmission 188 HP/325 lb Torque</li> <li>Attention Assist</li> <li>Multifunction Steering with Trip Computer</li> <li>Light and Rain Sensor</li> <li>Heated/Electric Adjustable Mirrors</li> <li>Windshield with Filter Band</li> <li>Stainless Steel Wheel Liners</li> </ul>	<ul style="list-style-type: none"> <li>Overhead Control Panel with Reading Lamps</li> <li>Improved Lane Keeping Assist</li> <li>Collision Prevention Assist</li> <li>Load Adaptive Electronic Stability (ESP)</li> <li>High Beam Assist</li> <li>GVWR- 11,030 lb</li> <li>GCWR- 15,250 lb</li> <li>GAWR Front- 4,410 lb</li> <li>GAWR Rear- 7,720 lb</li> </ul>	<ul style="list-style-type: none"> <li>5,000 lb Rated Hitch with 500 lb Vertical Tongue Weight and 7-pin Connector</li> <li>170.3" Wheel Base</li> <li>24.5 Gallon Fuel Tank</li> <li>4.8 Gallon DEF Tank<sup>6</sup></li> <li>SumoSprings Ride Assist System</li> <li>BigFoot® Hydraulic Leveling System</li> <li>Optional Aluminum Wheels</li> </ul>
<p><sup>6</sup> Diesel Exhaust Fluid (DEF) is the active component used in Selective Catalytic Reduction (SCR) engines to reduce nitrogen oxide emissions by 90% to meet EPA standards.</p>		

DRIVER'S COMPARTMENT		
<ul style="list-style-type: none"> <li>USB Port</li> <li>Radio</li> <li>Back-up Camera</li> <li>Power Cab Door Locks</li> <li>Power Cab Door Windows</li> <li>Adaptive Cruise Control</li> <li>Tilt Telescoping Steering Wheel</li> <li>Sun Visors</li> <li>12 V Power Outlet</li> </ul>	<ul style="list-style-type: none"> <li>Central Cab Locking with 2 Remotes</li> <li>Keyless Start</li> <li>Windshield Shades</li> <li>Black Leather Seats</li> <li>Heated Seats</li> <li>Leather Wrapped Steering Wheel Cover</li> <li>Power Adjustable Driver and Passenger Seat</li> </ul>	<ul style="list-style-type: none"> <li>Swivel Seat Base for Both Driver and Passenger Seat</li> <li>Driver and Passenger Door Courtesy Lights</li> <li>10.25" MBUX Infotainment System with In-dash Nav</li> <li>Chassis/House Battery Radio Power Swtich</li> <li>Traffic Sign Assist</li> <li>Optional Side-view Cameras</li> </ul>

LIVING AREA				
<ul style="list-style-type: none"> <li>House Radio/DVD/Bluetooth</li> </ul>	<ul style="list-style-type: none"> <li>Flush Mount Windows</li> </ul>	<ul style="list-style-type: none"> <li>Overhead Bunk</li> </ul>		
LIVING AREA OPTIONS	25 TW	25 RW	25 LW	25 SW
Living Area TV	S	O	S	S
Face-to-face Booth Dinette – Driver Side	–	S	–	S
70" Sofa w/Trifold Hide-a-bed (54" x 74") – Driver Side	–	O	–	O
50" Sofa w/ Trifold Hide-a-bed (42" x 74") – Driver Side	S	–	S	–
68" Electric Theater Seats – Driver Side	–	O	–	O
50" Electric Theater Seats (No Cupholders) – Driver Side	O	–	O	–
Overhead Entertainment Center	O	O	O	O

KITCHEN				
<ul style="list-style-type: none"> <li>LP Cooktop with Built-in Cover</li> <li>Convection Microwave</li> <li>Single Bowl Sink</li> </ul>	<ul style="list-style-type: none"> <li>Designer Faucet</li> <li>Over-the-counter Lighting</li> <li>Under-the-counter Lighting</li> </ul>	<ul style="list-style-type: none"> <li>Fire Extinguisher</li> <li>110 V Outlet</li> <li>Countertop Extension</li> </ul>		
KITCHEN OPTIONS	25 TW	25 RW	25 LW	25 SW
12 V 5 Cubic Foot Refrigerator	S	–	S	–
12 V 6.5 Cubic Foot Refrigerator	–	S	–	S
Gas/Electric 5 Cubic Foot Refrigerator	O	–	O	–
Gas/Electric 6.5 Cubic Foot Refrigerator	–	O	–	O

BEDROOM				
<ul style="list-style-type: none"> <li>Inverted Outlets in Bedroom for CPAP Machine</li> </ul>	<ul style="list-style-type: none"> <li>USB Port with 110 V Plug</li> <li>Wardrobe</li> </ul>	<ul style="list-style-type: none"> <li>LED Reading Lights</li> </ul>		
BEDROOM OPTIONS	25 TW	25 RW	25 LW	25 SW
Bedroom TV	O	S	O	O
Queen Sofa Murphy Bed (60" x 74")	–	S	–	–
Two Twin Mattresses (32" x 76") Converts into King Bed (86" x 76")	S	–	–	–
Two Twin Mattresses (32" x 76") Pop-up Closet Storage on Driver Side	–	–	S	–
Queen Mattress (60" x 74")	–	–	–	S

BATHROOM				
<ul style="list-style-type: none"> <li>Vanity Storage</li> </ul>	<ul style="list-style-type: none"> <li>Porcelain Vessel Sink with Chrome Faucet</li> </ul>	<ul style="list-style-type: none"> <li>Fan-Tastic Vent Fan</li> </ul>		
BATHROOM OPTIONS	25 TW	25 RW	25 LW	25 SW
One-piece Fiberglass Shower (30" x 36") with Skylight	–	S	–	–
One-piece Fiberglass Shower (24" x 32") with Skylight	S	–	S	S



FOR PARTS & SERVICE CALL 205.487.4710 OR VISIT [TIFFINMOTORHOMES.COM](http://TIFFINMOTORHOMES.COM)  
625 FAWN GROVE ROAD WINFIELD, AL 35594 [f](#) [t](#) [i](#) [p](#)



©2021 Tiffin Motorhomes, Inc. Allegro®, Allegro Breeze®, Allegro RED®, Phaeton®, Allegro Bus®, Zephyr®, Wayfarer®, Roughing It Smoothly®, Open Road®, PowerGlide®, and Pusher® are registered trademarks of Tiffin Motorhomes, Inc. All rights reserved. For all information concerning the limited warranty provided by Tiffin, please refer to the full written limited warranty set forth on the Tiffin website or held by our authorized dealerships. Please note, some interior furnishings not included.

1

YEAR OR 12,000 MILES  
LIMITED WARRANTY

3

YEAR  
PAINT DELAMINATION  
LIMITED WARRANTY

5

YEAR OR 100,000  
MILES CHASSIS POWERTRAIN  
LIMITED WARRANTY

3

YEAR OR 36,000 MILES  
MERCEDES-BENZ CHASSIS  
LIMITED WARRANTY

1

YEAR  
COACH ROADSIDE  
SERVICES



**TIFFIN**  
MOTORHOMES