

## QUALITY

Winnebago RVs are designed and built around you, with superior craftsmanship, advanced manufacturing technologies and steel-focused construction to enhance safety and reliability.

## INNOVATION

From groundbreaking RVs to game-changing features to the spacious floorplans made possible by our SmartSpace™ design, our heritage is unrivaled for continuous industry firsts in vehicle technology and design.

## SERVICE

Our carefully chosen dealers are supported by factory training and our advanced parts supply system, while owners benefit from excellent real-world customer support as well as 24/7 access to online technical information.

**WINNEBAGO**



©2021 Winnebago. Printed in USA 06/20

**WINNEBAGO**

**REVEL**



## Treat roads more like suggestions.

When the going gets tough, the tough turn to the Winnebago® Revel™, the most capable camper van we've ever built.

Off-road and off-grid ready, the fully-equipped Revel is the ideal launch pad for outdoor adventures of all kinds.

- » 4WD Mercedes-Benz® Sprinter chassis
- » LiFePO4 Energy system / Second alternator / Solar
- » Power Lift platform bed & gear garage
- » User-configurable storage
- » Hydronic heating system that runs off chassis fuel

**WINNEBAGO**



Engineered  
to help you  
get out. And  
stay out.



#### PERFORMANCE WHEELS & ALL-TERRAIN TIRES

Augment the Revel's off-road capability with optional performance wheels from Method Race Technology featuring Bead Grip Technology and BF Goodrich® T/A® KO2 all-terrain tires.



#### POWER TO GO

To keep the two 125-amp-hour lithium-ion batteries charged while off-grid, the Revel comes standard with two solar panels. The batteries are also charged while driving using a second, dedicated alternator or via plugging in to shorepower.



#### GALLEY ACCESS WITH EXTERIOR TABLE

A new take on dining out. The Revel galley offers easier access from outside the van, with a fold-down exterior table and a portable induction cooktop that can be used indoors or out.



#### (KEEP THE) CHILL OUT

In addition to its extensive insulation, the Revel features a diesel-powered hydronic heating system designed to provide heating and hot water in even the most adverse climates. A quiet, efficient Bluetooth® controlled air conditioner is also available.



#### SUPERIOR SAFETY AND CONVENIENCE FEATURES

Driving aids include adaptive cruise control, blind-spot monitoring, lane-keeping and active brake assist, plus a MBUX® touchscreen multimedia infotainment center with navigation, voice control and rear camera.

Superbly  
equipped for  
adventures  
that begin  
where the  
pavement  
ends.

With 188 horsepower, on-demand  
4WD with Hi/Lo range, electronic  
stability and traction control,  
the Revel can take you almost  
anywhere — and back again.





## Functional meets comfortable.

### 1. Flexible galley

The galley adapts to your needs, with a removable counter extension, adjustable exterior table and easy access to the refrigerator from inside or outside the coach.

### 2. Swivel cab seats & pedestal table

Swivel the cab seats around for an instant lounge, then deploy the pedestal table and voila! An instant dining room or workspace.

### 3. Wet bath/Gear closet

The bath features a swiveling cassette toilet, flexible showerhead and powered roof vent. Adjustable shelves and a removable clothes rod make it ideal for storage or drying wet gear.

### 4. Power Lift bed

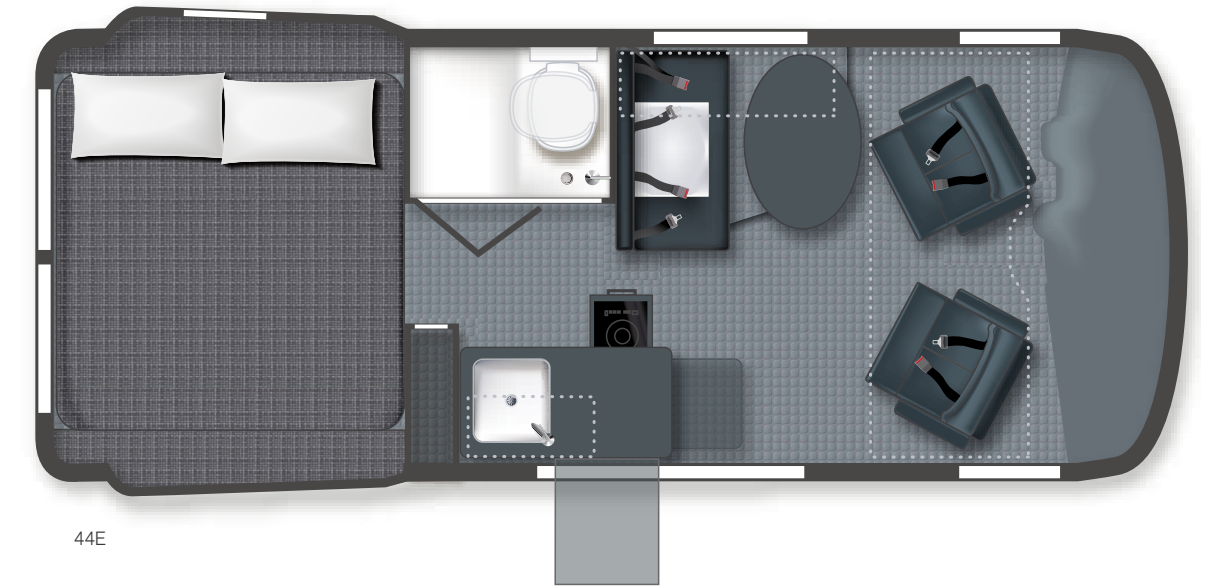
The large (49" x 79") Power Lift bed can be raised or lowered to your desired position with the push of a button, letting you customize the garage space to suit your needs.

### 5. Gear garage

The massive below-bed gear garage includes 6 removable tie-down anchors for securing gear, plus molded pockets, zippered storage and a cargo cubby with RAM® Tough-Track™ mounts.

### 6. Screen doors

The side screen door with magnetic closure offers easy access, while the rear screen has a blackout panel for privacy — and sleeping late.



Dotted lines denote overhead storage area.  
Floorplans are representations only and are subject to change.  
Please contact a certified Winnebago dealer for more information.

# WINNEBAGO REVEL / Specifications

WEIGHTS & MEASURES	44E
Length	19'7"
Exterior Height <sup>1</sup>	10'
Exterior Width	7'1"
Awning Length	9'6"
Interior Height	6'3"
Interior Width	5'9.75"
Freshwater Tank Capacity <sup>2</sup> (gal.)	21
Water Heater Capacity (gal.)	Continuous
Cassette Toilet Capacity <sup>2</sup> (gal.)	5
Holding Tank Capacity - Gray <sup>2</sup> (gal.)	21
LP Capacity (gal.)	NA
Fuel Capacity (gal.)	24.5
GCWR <sup>3</sup> (lbs.)	13,550
GVWR (lbs.)	9,050
GAWR - Front (lbs.)	4,101
GAWR - Rear (lbs.)	5,360
Wheelbase	144"

Power mirrors w/defrost and turn signals  
Power door locks w/remote  
Power windows  
12-volt powerpoints  
Sunvisors  
Folding privacy screens for cab door windows  
Appliqué package  
Keyless entry w/remote  
Entry door assist handle w/RAM® Tough-Track™ mounts  
Rain sensor w/integrated wet wiper system  
High beam assist  
Active brake assist  
Dash charging station  
Active lane keeping assist  
Blind spot assist  
Traffic sign assist

## Interior

LED ceiling lights w/dimmer switch  
Tinted dual-pane euro acrylic windows w/cassette shades  
Deluxe powered ventilator fan w/rain cover  
Systems monitor panel  
USB charging points  
RAM® Tough-Track™ mounts throughout  
Heavy-duty vinyl flooring throughout

## OPTIONAL EQUIPMENT

Front cab air mattress 30"x65" w/support base, cordless pump, repair kit and storage bag

## Galley

Removable counter extension  
Laminate countertop  
Portable single burner induction range top  
3.0 cu. ft. 12V compressor driven refrigerator/freezer  
Stainless steel sink w/single control faucet  
Pantry  
Removable, pedestal table  
Full-extension drawers

## Bath

Flexible showerhead  
Shower curtain  
Shower w/wall surround  
Wet bath 31"x26"  
2 removable shelves convert to wet storage cabinet  
Removable clothes rod  
Swiveling cassette toilet  
Powered roof vent

## Bedroom

Power lift bed w/molded pockets and zip storage below  
Under-bed gear garage storage w/six removable cargo tie-down anchors  
Powered roof vent (NA w/air conditioner)  
Reading lights

## Exterior

Side screen door w/magnetic closure system  
Rear screen door w/blackout panel  
Powered patio awning w/LED lighting and Bluetooth® control  
Porch light w/interior switch  
Running boards w/ground effect lighting and rubber trim  
Rear mud guards  
Movable ladder  
Luggage rack  
Fold-down exterior table

## Heating & Cooling System

Hydronic Heating System w/LED touchscreen panel

## OPTIONAL EQUIPMENT

Coleman®-Mach® 10 NDQ air conditioner w/directional vents, Bluetooth® control and built-in thermostat

## Electrical System

AC/DC load center/converter  
(2) 125-amp.-hour Lithium ion batteries w/dedicated second alternator to charge system  
Coach battery disconnect system  
Dual-battery charge system  
30-amp. power cord  
Solar panel/battery charger  
2,000-watt inverter/charger  
Roof port wiring access

## Plumbing System

Water center control panel includes all control valves, connection points and exterior wash station w/pump switch  
Winterization Package w/valve and siphon tube  
On-demand water pump  
Galley drain pump  
Heated gray water holding tank  
Potable water tank

## Safety

Smoke and carbon monoxide detector  
Fire extinguisher  
Ground fault interrupter  
High-mount brake lamp  
Daytime running lamps

## Warranty<sup>4</sup>

12-month/24,000-mile basic warranty<sup>5</sup>

## FOOTNOTES

- The height of each model is measured to the top of the tallest standard feature and is based on the curb weight of a typically equipped unit. The actual height of your vehicle may vary by several inches depending on chassis or equipment variations. Please contact your dealer for further information.
- Capacities are based on measurements prior to tank installation. Slight capacity variations can result due to installation applications.
- Actual towing capacity is dependent upon your particular loading and towing circumstances, which includes the GVWR, GAWR and GCWR as well as adequate trailer brakes. Please refer to the Operator's Manual of your vehicle for further towing information.
- See separate chassis warranty.
- See your dealer for complete warranty information.

NA Not Available  
Not all items available in combination. See dealer for details.  
Because features, specifications, equipment, and options may vary from those highlighted in this brochure, the buyer is responsible for confirming with the dealer the features, specifications, equipment, and options included on their specific vehicle. In addition, Winnebago's program of continuous product improvement may result in changes to vehicle specifications, equipment, model availability, and price without notice.  
Winnebago recommends following the winter use guidelines and winterization procedures outlined in your owner's manual whenever camping in freezing conditions.

## EXTERIORS



BLUE GREY



BLUE GREY WITH GRAPHICS



PEBBLE GREY



PEBBLE GREY WITH GRAPHICS



SILVER FOREST



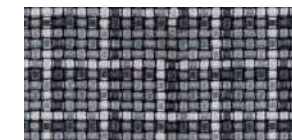
SILVER FOREST WITH GRAPHICS

## DECOR

### INTREPID



Ultraleather



Bed Cover



Wall Material



Cabinets - Silver Springs



Accent Fabric



Vinyl Flooring



Countertop



Cabinets - Pewter



What do you need to know before you go?

And how does that cassette toilet work again?

The answers to these and many more questions are literally at hand, thanks to HowToRevel.com, the app-based system of how-to videos that explains pretty much everything you need to know to get the most out of your Revel.

From adjusting seats and lowering (or raising) a bed, to operating major systems, to plumbing and electrical basics — it's all here. And it's all at your fingertips wherever your Revel takes you.



HowToRevel.com



Scan the QR code with your smartphone camera, or type in the URL, to download the app and learn more about the Revel.

**LaMESA RECREATION VAN**  
LaMesaRV.com  
800-496-8778