

## QUALITY

Winnebago RVs are designed and built around you, with superior craftsmanship, advanced manufacturing technologies and steel-focused construction to enhance safety and reliability.

## INNOVATION

From groundbreaking RVs to game-changing features to the spacious floorplans made possible by our SmartSpace™ design, our heritage is unrivaled for continuous industry firsts in vehicle technology and design.

## SERVICE

Our carefully chosen dealers are supported by factory training and our advanced parts supply system, while owners benefit from excellent real-world customer support as well as 24/7 access to online technical information.

**WINNEBAGO**

©2023 Winnebago. Printed in USA 04/23



**WINNEBAGO**

SOLIS



## Designed for Adventure

In a world where roles can change by the hour, flexibility is paramount. And when it comes to flexibility, few vehicles can match the remarkable Winnebago® Solis®. Seating up to six, the Solis can easily function as a family car — a car equipped with kitchen, dinette and bathroom. Yet when the time comes, load up your favorite outdoor gear and head out, knowing the versatile Solis is ready for whatever adventure lies around the next bend.





No matter where your road leads you, at the end of the day, simply turn the key off and you're home.



**PRACTICAL, MEET VERSATILE**

Seating up to six, the Solis easily transitions from a practical family car during the week to a comfortable, self-contained retreat once the weekend arrives.



**A HOME FOR YOUR GEAR, TOO**

The large gear garage (36A, 59PX) includes a durable L-track storage system that can be customized with mounts and tie-downs to secure bicycles or other gear and cargo.



**BRING THE FAMILY, NOT THE TENT**

Thanks to its pop-top and Murphy+ bed (or available rear sofa/bed, 59P), the Solis offers generous sleeping space for a family of campers.



**WORK REMOTELY – EMPHASIS ON REMOTE**

With the Murphy+ bed raised up, the movable pedestal table becomes a workstation-with-a-view for road warriors (59P, 59PX).



**SLEEP CLOSER TO THE STARS**

The 59P and 59PX include a standard (with option to remove) fiberglass pop-top with FROLI® Sleep System that comfortably sleeps two, while the 36A features our Murphy+ bed as well as a multi-use dinette that converts to a sofa, daybed or single bed.



## We've engineered more into your Solis, so you get the most out of every adventure

### 1. Versatile lounge living

Swivel cab seats, the adjustable/removable dinette table, and a multitude of storage options let you customize the Solis lounge for dining, relaxing or working from the road.

### 2. Quiet, efficient heating for chilly nights

The high performance, LP-powered Truma system provides quiet comfortable heating, all controlled by the temperature set on the digital control panel.

### 3. Galley with indoor/outdoor functionality

With its forward-facing refrigerator, pullout counter extension, and adjustable exterior table (36A), the Solis galley is designed to allow easy access from inside or outside the coach.

### 4. Cross-coach Murphy+ bed

The comfortable, supportive Murphy+ bed (59"x77", 59P, 59PX or 52"x75", 36A) is set to accommodate storage for bicycles or other gear below the bed. On the 36A, removable cushions on the passenger side reveal a countertop surface that's ideal for food prep or as a stand-up workspace.

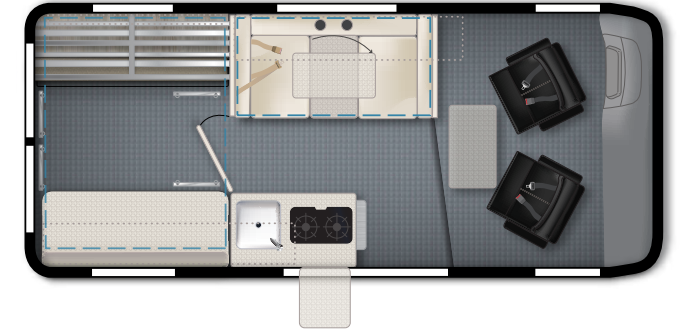
### 5. Pop-top sleeping for two

The easily operated pop-top offers panoramic views and provides a restful night's sleep with its innovative, comfortable 52"x79" FROLI® sleep system, which conforms to your body and allows greater air flow below the mattress (NA 36A).

### 6. Bathroom

The wet bath in the 59P and 59PX makes the most of its compact space, with a cassette toilet, flexible showerhead and removable closet rod that provides extra hanging space.

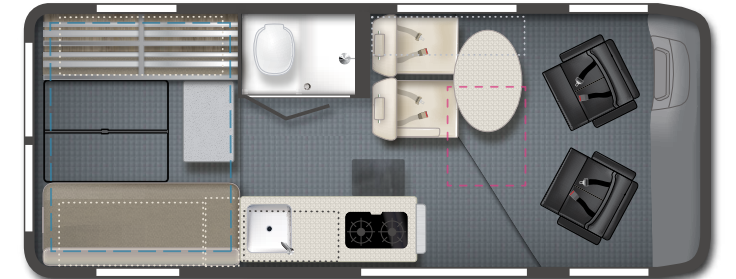
Dinette Conversions



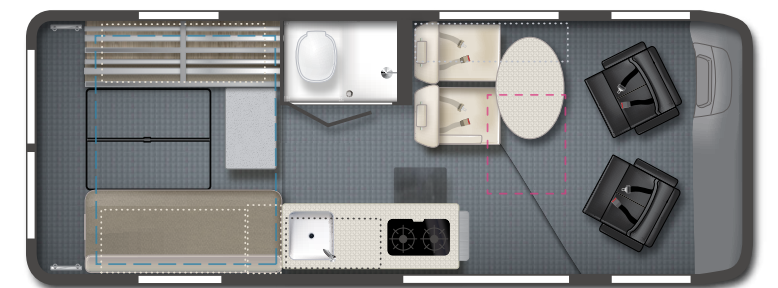
36A



Optional Sofa/Bed



59P



59PX

Dotted lines denote overhead storage area. Blue dashed lines denote sleeping areas. Magenta dashed lines denote access to pop-top sleeping. Floorplans are representations only and are subject to change. Please contact a certified Winnebago dealer for more information.





Winnebago's smart design and advanced technology enhance safety on the road, and provide added comfort and convenience in camp.



#### TAKE A SEAT AND TAKE COMMAND

The fuel-efficient Promaster® chassis is easy to maneuver, with advanced safety features and an automotive driving experience that will have you feeling right at home.



#### 3 POINT SEATBELTS FOR 4 PASSENGERS

Both dinette seats feature 3-point seatbelts, while the available sofa/bed with child seat tether anchors (59P) boosts seating capacity to six — all with 3-point seatbelts.



#### A CLEARER REAR VIEW

For more insight into what's happening outside, the innovative Digital Rearview Mirror converts from a reflective mirror to a real-time video stream at the touch of a button.



#### EASY LIVING

The rear annex extends your living space and can easily be used as an exterior shower space, awning, or clothesline for wet suits, laundry or other items.



# WINNEBAGO SOLIS / Specifications

WEIGHTS & MEASURES	36A	59P	59PX
Length	17'10"	19'9"	21'
Exterior Height <sup>1</sup>	9'5"	9'	9'5"
Exterior Width	6'9"	6'9"	6'9"
Interior Height	6'3"	6'3"	6'3"
Interior Width	6'2"	6'2"	6'2"
Freshwater Tank Capacity <sup>2</sup> (gal.)	20	20	20
Water Heater Capacity (gal.)	NA	2.6	2.6
Cassette Toilet Capacity <sup>2</sup> (gal.)	3.2	5	5
Holding Tank Capacity - Gray <sup>2</sup> (gal.)	20	20	20
LP Capacity <sup>3</sup> (lbs.)	20	25	25
Fuel Capacity (gal.)	24	24	24
GCWR <sup>4</sup> (lbs.)	12,000	12,000	12,000
GVWR (lbs.)	8,550	8,900	9,350
GAWR - Front (lbs.)	4,629	4,629	4,629
GAWR - Rear (lbs.)	5,291	5,291	5,291
Wheelbase	136"	159"	159"

\*Extended Wheelbase

## Optional Package Upgrade

Limited Edition National Park Foundation Package: Bright White exterior with exclusive National Park Foundation badging and graphics, Canyon w/weathered teak interior, SuperSprings<sup>®</sup> SumoSprings<sup>®</sup> (front & rear), all-terrain tires, stylized performance wheels, SmartSpace™ Overland drawer system, thermal cab and window coverings, galley storage pack and removable floor mat (59P)

## Chassis

Ram ProMaster<sup>®</sup> 280-hp, 3.6L V6 gas engine, 9-speed automatic 62TE transmission, 180-amp alternator  
4-wheel ABS brakes  
Trailer hitch<sup>4</sup>

## Cab Conveniences

Radio/Rearview Monitor System  
Swivel cab seats  
Airbags driver and passenger  
Cruise control  
3-point seat belts  
Electric power steering  
Power mirrors  
Power door locks  
Power windows  
12-volt powerpoints  
Sunvisors  
Digital rearview mirror  
Crosswind assist  
Front and cab window privacy panels  
Full-speed forward collision warning plus  
Pedestrian automatic emergency braking system

Post collision braking  
Push button start

## Interior

LED ceiling lights  
Tinted coach windows  
Systems monitor panel  
USB charging ports  
Zippered window coverings  
Roof vent (Pop-top sleeping area) (59P, 59PX)  
Below floor storage (lounge) (59P, 59PX)  
Forward facing dinette w/removable pedestal table (59P, 59PX)  
Dinette w/two facing seats (converts to sofa/daybed and includes one 3-point seatbelt) (36A)  
Multi-use storage area w/cupholders and charging center (36A)  
Removable/adjustable table w/two mounting locations (36A)  
MOLLE panel retention gate w/galley storage pack (36A)  
Reading lights  
Deluxe powered ventilator fan (36A, 59PX without pop-top)  
Roof access wiring port  
Heavy-duty vinyl flooring throughout  
Gear space (36A, 59PX)

## OPTIONAL

Front cab air mattress 30" x 65" w/support base, cordless pump, repair kit and storage bag

## Galley

Laminate countertop  
Pull-out countertop extension (59P, 59PX)

2-burner range top  
Single door compressor-driven refrigerator/freezer  
Stainless steel sink  
Spice rack (59P, 59PX)

## Bath

Flexible shower head (59P, 59PX)  
Removable clothes rod (59P, 59PX)  
Shower (59P, 59PX)  
Mirror (59P, 59PX)  
Shower curtain (59P, 59PX)  
Tissue holder (59P, 59PX)  
Swiveling cassette toilet (59P, 59PX)  
Portable toilet (stored under rear facing dinette seat) (36A)

## Bedroom

Murphy+ bed  
Slat bed system  
Deluxe powered ventilator fan (59P)  
Movable table (59P, 59PX) (Murphy+ bed option only, NA w/National Park Foundation Package)

## OPTIONAL

Sofa/Bed w/two 3-point seat belts (59P, NA w/National Park Foundation Package)

## Exterior

Pop-top sleeping area (NA w/36A)  
Assist bar handle  
Porch light  
Aluminum running board  
Driver side service light (59P, 59PX)  
Side screen door  
Rear screen door  
Rod and privacy screen  
Fold-down exterior table (36A)

## OPTIONAL

Remove Pop-top sleeping (59P, 59PX)

## Heating & Cooling System

Truma Combi<sup>®</sup> eco heating system (59P, 59PX)  
Coleman<sup>®</sup>-Mach<sup>®</sup> 10 NDQ air conditioner (36A, 59PX)  
Truma VarioHeat (36A)

## OPTIONAL

13,500 BTU air conditioner (59P)

## Electrical System

2 deep-cycle Group 31 batteries  
30-amp. power cord

Cummins Onan<sup>®</sup> QG 2,800-watt gas generator (59PX)  
220-watt flexible surface solar panel (with pop-top)  
170-watt solar panel w/controller (without pop-top)  
Auxiliary start circuit  
AC/DC load center, 55-amp. converter/charger  
Automatic dual-battery charge control  
Coach battery disconnect system

## Plumbing System

On-demand water pump  
Exterior wash station  
Water center control panel  
Eco-Hot™ water system (59P, 59PX)  
Fresh water sight glass  
Permanent-mount LP tank w/gauge (59P, 59PX)  
Removable LP cylinder (36A)  
10' sewer hose  
Heated drainage system (59P, 59PX)

## Safety

LP, smoke, and carbon monoxide detectors  
Fire extinguisher  
Ground fault interrupter  
Child seat tether anchor (36A, 59P sofa/bed option)  
Fog lamps (59PX)

## Warranty<sup>5</sup>

12-month/24,000-mile basic warranty<sup>6</sup>

## FOOTNOTES

- The height of each model is measured to the top of the tallest standard feature and is based on the curb weight of a typically equipped unit. The actual height of your vehicle may vary by several inches depending on chassis or equipment variations. Please contact your dealer for further information.
- Capacities are based on measurements prior to tank installation. Slight capacity variations can result due to installation applications.
- Capacities shown are tank manufacturer's listed water capacity (W.C.). Actual filled LP capacity is 80% of listing due to overfilling prevention device on tank.
- Actual towing capacity is dependent on your particular loading and towing circumstances which includes the GVWR, GAWR, and GCWR, as well as adequate trailer brakes. Please refer to the Operator's Manual of your vehicle for further towing information.
- See separate chassis warranty.
- See your dealer for complete warranty information.

NA Not Available  
Not all items available in combination. See dealer for details.

Because features, specifications, equipment, and options may vary from those highlighted in this brochure, the buyer is responsible for confirming with the dealer the features, specifications, equipment, and options included on their specific vehicle. In addition, Winnebago's program of continuous product improvement may result in changes to vehicle specifications, equipment, model availability, and price without notice.

Winnebago recommends following the winter use guidelines and winterization procedures outlined in your owner's manual whenever camping in freezing conditions.

## EXTERIORS



BRIGHT WHITE



CERAMIC GRAY



DEEP CHERRY RED



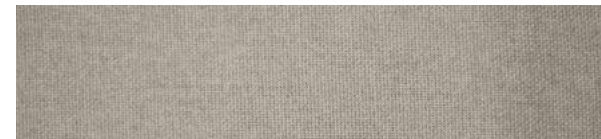
SPITFIRE ORANGE (59PX ONLY)

## DECOR

### NOMAD



Ultrafabrics UF Select



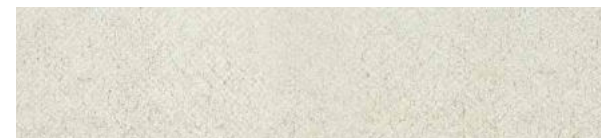
Luxury Linen (36A)



Bed Cover



Vinyl Flooring



Wall Board



Countertop



Wood - Weathered Teak

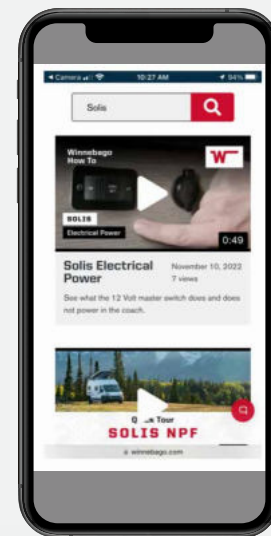


What do you need to know before you go?

And how does that cassette toilet work again?

You'll find the answers to these and many more questions in the Solis Video Library, a collection of informative and how-to videos that explains pretty much everything you need to know about the Solis.

From adjusting seats, to operating major systems, to plumbing and electrical basics — it's all here in the Solis Video Library.



## Solis Video Library



Scan the QR code with your smartphone camera, to access the Video Library and learn more about the Solis.

# MEET THE NEW **SOLIS NPF**

The Solis® National Park Foundation Limited Edition takes the family-friendly, adventure-ready Solis to a new level with exclusive features to enhance comfort, performance, functionality and style.



## **SmartSpace™ Overland Drawer System**

This durable drawer system provides easy access to gear, and features water resistant surfaces and removable dividers. The passenger-side drawer cover can be raised to use as a comfortable work space or meal prep area, and offers access to the water panel when using the collapsible sink.

## **Increased Performance**

Black stylized performance wheels paired with all-terrain tires let you tackle tougher trails, while the factory-installed SumoSprings® Suspension upgrade improves overall control and ride comfort.

## **Outdoor-Inspired Style**

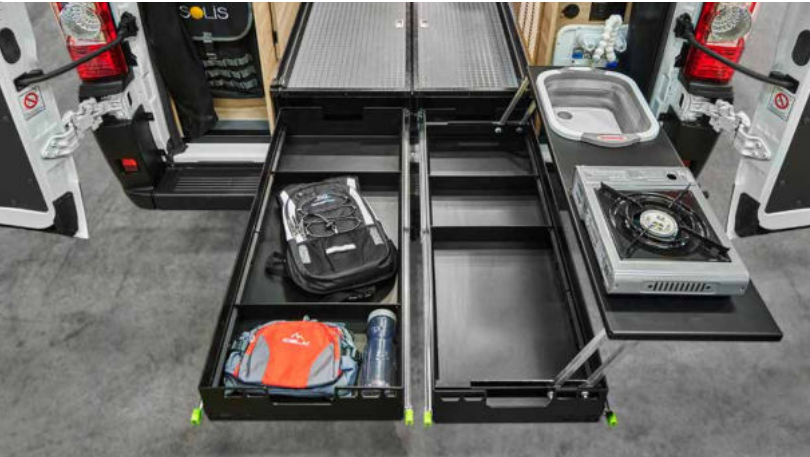
The NPF edition stands out with its special mountain graphic exterior paint scheme, colorful abstract mountain refrigerator graphic, topographical countertop surface, and surf-to-slope inspired embroidered window coverings.

## **Ground-Floor Innovation**

Innovative padded floor covering increases comfort, provides a non-slip surface that's easy to clean (just shake it out!), and provides an added thermal barrier for chilly mornings.

## **Blackout Thermal Shades**

Cab-window coverings provide near total blackout, and have improved thermal performance.

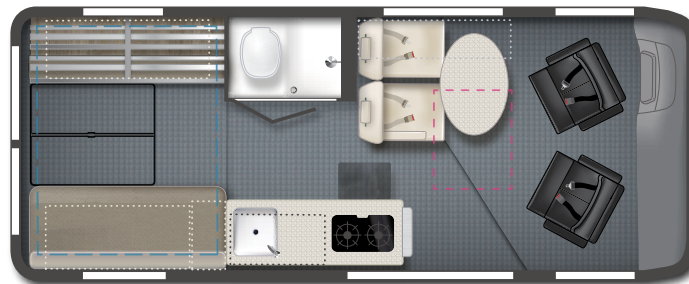


## Weights & Measurements

**59P**

Length	19'9"
Exterior Height	9'
Exterior Width	6'9"
Interior Height	6'3"
Interior Width	6'2"
Freshwater Tank Capacity (gal.)	20
Holding Tank Capacity - Gray (gal.)	20
Water Heater Capacity (gal.)	2.6
Fuel Capacity (gal.)	24
GCWR (lbs.)	12,000
GVWR (lbs.)	8,900
GAWR - Front (lbs.)	4,629
GAWR - Rear (lbs.)	5,291
Wheelbase	159"
Cassette Toilet Capacity (gal.)	5
Sleeps	4

Winnebago's® continuing program of product improvement makes specifications, equipment, model availability, and prices subject to change without notice. Published content reflects the most current product information at the time of printing. Please consult your dealer for individual vehicle features and specifications.



**59P**

Note: Dotted lines denote overhead storage area. Blue dashed lines denote sleeping areas. Magenta dashed lines denote access to pop-top sleeping. Floorplans are representations only and are subject to change. Please contact a certified Winnebago dealer for more information.



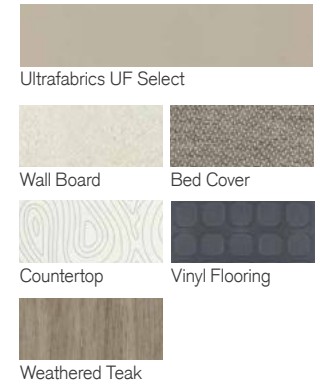
## Exterior



**BRIGHT WHITE**  
WITH MOONLIT GRAPHICS

## Décor

### CANYON



**SCAN THIS QR CODE**  
TO LEARN MORE ABOUT THIS MODEL



# MEET THE SOLIS POCKET

Winnebago's most affordable camper van, the Solis Pocket® is designed for life on the go, with extended-season capability and a flexible floorplan you can customize for relaxing, working, or socializing.



**Extended-season capability** lets you camp in comfort, thanks to the Truma® VarioHeat™ heating system, extensive insulation, and locating all water tanks, valves, lines and pump inside the coach.\* The Pocket has earned Truma's Gold Certification for cold weather capability.

**Versatile living space** features a dinette that converts to a sofa, daybed or love seat, an adjustable/removable table, swivel cab seats and plenty of storage options.

**Convenient, removable 20-pound propane cylinder** is securely located inside the coach for extended-season use, and can be easily filled or exchanged.

**Flexible galley** offers functionality inside and outside the coach, with exterior table, stainless steel sink, two-burner cooktop and forward-facing refrigerator. Remove the cushions on the passenger side to reveal an extended countertop surface that's ideal for food prep.

**Efficient RAM Promaster® chassis** provides significant ground clearance, is easy to maneuver and park with its 136-inch wheelbase, and features a digital rearview mirror that converts from a reflective mirror to a real-time video stream.

**MOLLE (Modular Lightweight Load-carrying Equipment)** panel can be used to secure the Pocket's removable galley storage pack, outdoor gear, or other accessories.

**Cross-coach Murphy+ platform bed** is set at a higher point to allow bicycle and other gear storage below the bed using the L-track cargo tie-downs and/or MOLLE panel.

**Multi-use storage** along the dinette sidewall supports remote workers with bottom-hinged storage cabinets for files, laptops or supplies, pockets for storing and charging electronics, and cupholders.

The Winnebago logo, featuring the word 'WINNEBAGO' in a bold, white, sans-serif font with a horizontal line above it, set against a dark background.

\* Winnebago recommends following the winter use guidelines and winterization procedures outlined in your owner's manual whenever camping in freezing conditions.



### WEIGHTS & MEASURES

**36A**

Exterior Length	17'10"
Exterior Height	9'5"
Exterior Width	6'9"
Interior Height	6'3"
Interior Width	6'2"
Freshwater Tank Capacity (gal.)	20
Water Heater Capacity (gal.)	NA
Cassette Toilet Capacity (gal.)	3.2
Holding Tank Capacity - Gray (gal.)	20
LP Capacity (lbs.)	20
Fuel Capacity (gal.)	24
GCWR (lbs.)	12,000
GVWR (lbs.)	8,550
GAWR - Front (lbs.)	4,629
GAWR - Rear (lbs.)	5,291
Wheelbase	136"

Winnebago's® continuing program of product improvement makes specifications, equipment, model availability, and prices subject to change without notice. Published content reflects the most current product information at the time of printing. Please consult your dealer for individual vehicle features and specifications.



**BRIGHT WHITE**



**DEEP CHERRY**



**CERAMIC GRAY**

### Dinette Conversions



Note: Dotted lines denote overhead storage areas. Blue dashed lines denote sleeping areas. Floorplans are representations only and are subject to change. Please contact a certified Winnebago dealer for more information.

©2023 Winnebago

