

QUALITY

Winnebago RVs are designed and built around you, with superior craftsmanship, advanced manufacturing technologies and steel-focused construction to enhance safety and reliability.

INNOVATION

From groundbreaking RVs to game-changing features to the spacious floorplans made possible by our SmartSpace™ design, our heritage is unrivaled for continuous industry firsts in vehicle technology and design.

SERVICE

Our carefully chosen dealers are supported by factory training and our advanced parts supply system, while owners benefit from excellent real-world customer support as well as 24/7 access to online technical information.

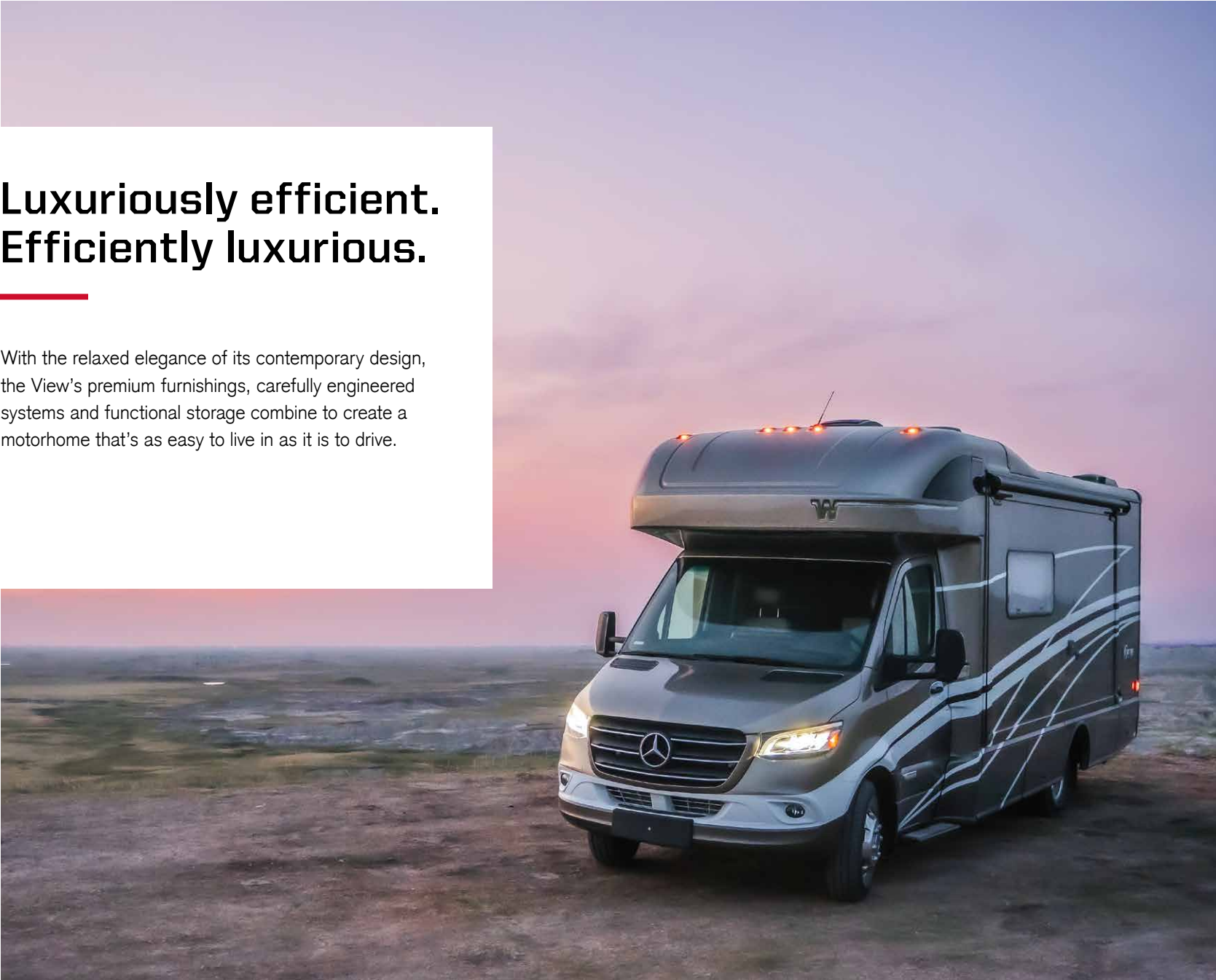


©2022 Winnebago Printed in USA 01/23



# Luxuriously efficient. Efficiently luxurious.

With the relaxed elegance of its contemporary design, the View's premium furnishings, carefully engineered systems and functional storage combine to create a motorhome that's as easy to live in as it is to drive.



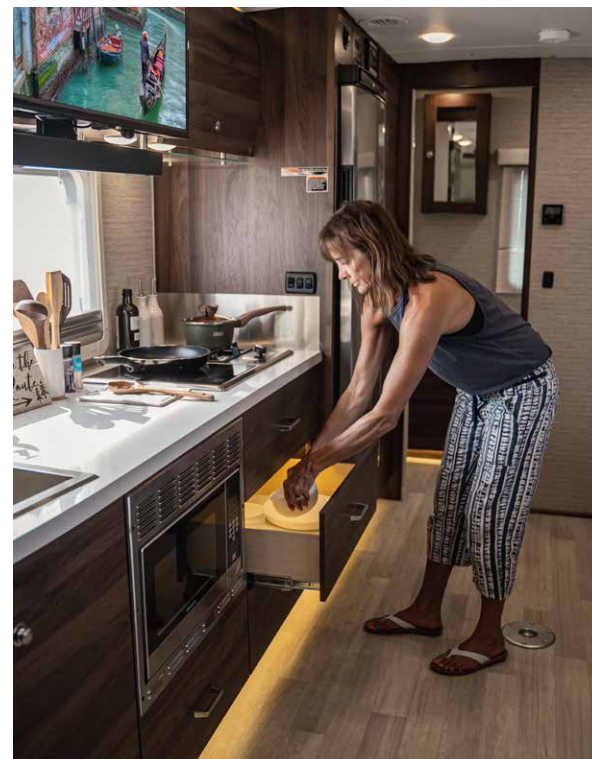


From its  
rock-solid  
foundation  
to the latest  
innovations,  
the View has  
never looked  
better.



### Mercedes-Benz Sprinter Chassis

The proven Sprinter chassis incorporates the latest Mercedes-Benz® safety features and, with its fuel-efficient turbo-diesel V6, provides plenty of towing power.



### Upscale interior

With premium components and contemporary design cues, you'll be proud to call your View® home everywhere you go.



### Extended escapes

Stay out longer, thanks to the View's standard 200-watt solar panels, available dual lithium-ion batteries and 2kW inverter, and some of the largest holding tanks in its class.



### SuperShell™ Sleeper Deck

The stylish lightweight fiberglass outer shell provides enhanced thermal and acoustic insulation, keeping things quieter and more comfortable, in camp and on the road.



### Exterior storage

No toy left behind: the View offers up to 43 cubic feet of exterior storage, including cross-coach storage (24D, 24J) for larger items.





## Thoughtfully designed spaces, highlighted with deluxe amenities.

### Gourmet-worthy galley

The enhanced galley features larger cabinets and drawers, more usable counter space, large 10 cu. ft. DC refrigerator/freezer, and hybrid LP/induction cooktop.

### Dining options to suit your taste

Dine and relax in comfort: the three View floorplans let you choose the seating and table options that work best for your style.

### Deluxe seating options

Available theater seating with hideaway swivel tables (24D, 24J) or dual recliners with table (24V), make an ideal spot to catch a movie or the big game.

### Attractive, functional storage solutions

Lightweight and durable, the curved Tecnoform® cabinets blend perfectly with the stylish interior, while thoughtful touches like the lighted soft-close drawers abound.

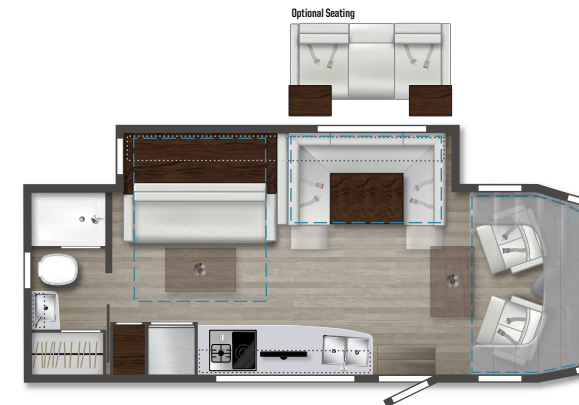
### Flexible sleep solutions

In addition to a cabover bunk, each floorplan offers a different bed configuration: Murphy+ bed (24D), rear corner bed (24J) or Flex bed twin/queen system (24V).

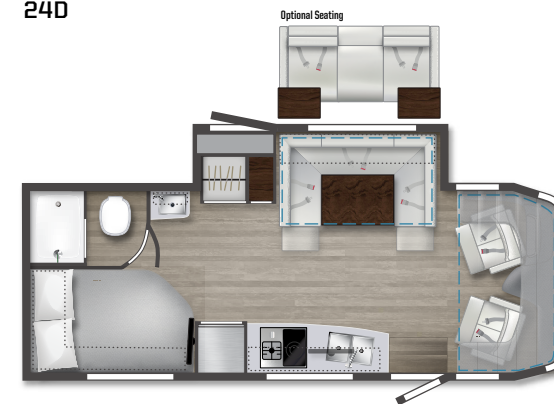
### Deluxe bath

The well-equipped bath includes a separate shower with Oxygenics® showerhead, stainless steel sink, lavatory and medicine cabinets, and gentle toe-kick lighting.

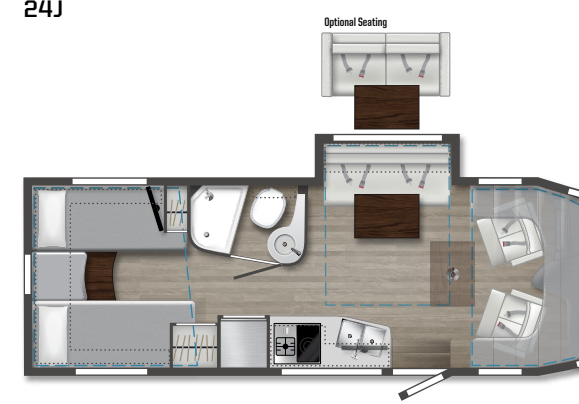
Dotted lines denote overhead storage area. Blue dashed lines denote sleeping areas. Floorplans are representations only and are subject to change. Please contact a certified Winnebago dealer for more information.



24D



24J



24V



Family getaways,  
weekends with  
friends or the  
trip of a lifetime:  
the View rises to  
every occasion.



#### **FROLI sleep system (24J, 24V)**

Developed in Europe, the FROLI® Sleep System relieves pressure and improves air circulation under the mattress for a better night's sleep.



#### **Entertainment Package**

The available entertainment system upgrade includes a Blu-Ray Disc® player and Bluetooth® soundbar for a more immersive experience.



#### **Enhanced entryway door**

It all starts here: the sleek entrance includes a streamlined screen door with a large window and built-in storage. And the double latching system reduces road and camp noise.





WEIGHTS & MEASURES	24D	24J	24V
Length	25'6"	25'6"	25'6"
Exterior Height <sup>1</sup>	11'	11'	11'
Exterior Width	7'6.25"	7'6.25"	7'6.25"
Exterior Storage <sup>2</sup> (cu. ft.)	30.0	43.0	33.6
Awning Length	16'	16'	16'
Interior Height	6'8"	6'8"	6'8"
Interior Width	7'3"	7'3"	7'3"
Freshwater Tank Capacity <sup>3</sup> (gal.)	30	37	31
Water Heater Capacity (gal.)	Continuous	Continuous	Continuous
Holding Tank Capacity - Black <sup>3</sup> (gal.)	41	41	41
Holding Tank Capacity - Gray <sup>3</sup> (gal.)	41	41	41
LP Capacity <sup>4</sup> (lbs.)	50.76	50.76	50.76
Fuel Capacity (gal.)	24.5	24.5	24.5
GCWR <sup>5</sup> (lbs.)	15,250	15,250	15,250
GVWR (lbs.)	11,030	11,030	11,030
GAWR - Front (lbs.)	4,410	4,410	4,410
GAWR - Rear (lbs.)	7,720	7,720	7,720
Wheelbase	170"	170"	170"

## Chassis

Mercedes-Benz® RWD Sprinter Chassis 2.0L high-output, turbo-diesel 4-cylinder engine, 9-speed automatic transmission w/overdrive, 250-amp. alternator

Adaptive ESP technology

Hydraulic brakes w/ABS

Trailer hitch<sup>5</sup> 5,000-lb. drawbar/500-lb. maximum vertical tongue weight w/7-pin connector

Stylized aluminum wheels

### OPTIONAL EQUIPMENT

Hydraulic leveling jacks w/automatic controls (front and rear)

## Cab Conveniences

MBUX® touchscreen multimedia infotainment center w/navigation, Wi-Fi hotspot, intelligent voice control and rear camera

Airbags driver, passenger, side and curtain

Heated power control cab seats w/armrest, adjustable lumbar support, headrest, recline, slide, and manual swivel

3-point seat belts

Climate control

Leather-wrapped steering wheel

Power door locks w/remote

Power windows

Power mirrors w/defrost and turn signals

Cruise control

Active brake assist

Power assist steering w/tilt wheel

Digital rearview mirror

Active lane keeping assist

Rain sensor w/integrated wet wiper system

Hill start assist

Crosswind assist

Attention assist

12V/USB powerpoints

Folding windshield and cab window blinds

Dash appliqué package

2 cab seat lounge cushions

### OPTIONAL EQUIPMENT

Cab seats w/Ultrafabrics® UF Select covering

## Interior

32" HDTV

LED lights

Satellite system ready

Amplified digital HDTV antenna

Powered roof vent w/rain cover, electric lift, remote control, thermostat operation (front bunk)

MCD solar/blackout roller shades

Systems monitor panel

Tinted coach windows

Assist bar

Vinyl flooring throughout

Soft vinyl ceiling

110V/12V/USB charging stations

Roof wiring access port

U-Shaped dinette (24D, 24J)

TrueComfort+ sofa w/table (24V)

### OPTIONAL EQUIPMENT

Dual recliners w/table (24V)

Dual-pane acrylic windows

Theater seating w/swivel tables (24D, 24J)

Entertainment system w/Blu-ray™ disc player and Bluetooth® soundbar

## Galley

Laminate countertops

Microwave/convection oven w/touch control

2-burner induction and LP range cooktop

Mini blinds

10.0 cu. ft. (12V) 2-door compressor driven refrigerator/freezer

Cold water filtration system (galley)

Water-pump switch w/light

Pantry (24D, 24J)

Cabinets w/accent lighting

Lighted soft-close drawers

Integrated paper towel holder

Double stainless steel sink w/2 sink covers

Toe kick lighting

## Bath

24" x 32" shower (24D, 24J)

19" x 28" x 34" shower (24V)

Retractable, self-cleaning shower screen

Oxygenics® flexible showerhead

Shower skylight

Porcelain toilet w/foot pedal and sprayer (24J, 24V)

Composite toilet (24D)

Powered roof vent w/rain cover

Lavatory cabinet

Medicine cabinet

Mini blinds (24D)

Towel rack (24V)

Towel bar(s) (24J, 24V)

Tissue holder

Removable clothes rod

Robe hook(s)

Integrated facial tissue holder

Toe kick lighting

## Bedroom

Murphy+ bed w/deluxe queen mattress, Euro-suspension system, gel foam topper (24D)

Corner bed w/headboard, foam mattress, mattress cover and access to storage below (24J)

Flex Bed System twin beds/king bed w/foam mattresses (24V)

FROLI® deluxe sleeping system (24J, 24V)

MCD blackout roller shades

Wardrobe cabinet

Metal clothes rod

Room divider curtain

Anything Keeper drop down storage above bed (24J, 24V)

110V/12V/USB charging stations (24J, 24V)

110V/USB charging station (24D)

24" LED HDTV (24J, 24V)

## Exterior

Automatic entrance door step

LED porch light w/interior switch

Stepwell light w/interior switch

Front and rear mud flaps

Aluminum cab steps w/logoed tread and loop attachment

Powered patio awning w/LED lights and Bluetooth® control

Large pass-through storage compartment (24D, 24J)

Ladder

## Heating & Cooling System

15,000 BTU air conditioner w/heat pump  
20,000 BTU low-profile ducted furnace





## Electrical System

**Service Center** w/light, cable TV input, 30-amp. power cord, portable satellite dish hookup, QuickPort® service connection hatch

**Automatic dual battery charge control**

**Exterior AC duplex**

**Exterior antenna jack**

**Generator auto transfer switch**

**Battery disconnect system** (coach)

**AC/DC load center/converter unit**

**2 deep-cycle, Group 31 RV batteries**

**3,600-watt Cummins Onan® MicroQuiet™ LP generator**

**2,000-watt pure sine wave DC/AC inverter**

**(2) 100-watt solar panel/battery charger** controller, junction box, and plug for additional portable solar panel

## OPTIONAL EQUIPMENT

**Lithium-ion smart batteries** w/Bluetooth® control

**3,200-watt Cummins Onan® diesel generator**

## Plumbing System

**Service Center** w/color-coded labels, pressurized city water hookup/tank diverter valve, drainage valves, exterior wash station w/lighted pump switch

**Truma AquaGo® Comfort Plus Tankless water heater**

**TrueLevel™ holding tank monitoring system**

**Heated drainage system**

**10' sewer hose**

**Winterization Package** water heater bypass valve and siphon tube

**On-demand water pump**

**Lockable water tank fill**

**Sewage pump macerator** (24V)

**Permanent-mount LP tank** w/gauge

**LPG accessory connection** (patio area)

**Black holding tank flushing system**

## Safety

**LPG leak, smoke and carbon monoxide detectors**

**Fire extinguisher**

**Ground fault interrupter**

**Child seat tether anchor** only available on the U-shaped dinette (24D, 24J)

## Warranty<sup>5</sup>

**12-month/15,000-mile limited warranty<sup>6</sup>**

**36-month/36,000-mile limited warranty on structure<sup>6</sup>**

**10-year limited parts-and-labor warranty on roof skin<sup>6</sup>**

### FOOTNOTES

1. The height of each model is measured to the top of the tallest standard feature and is based on the curb weight of a typically equipped unit. The actual height of your vehicle may vary by several inches depending on chassis or equipment variations. Please contact your dealer for further information.
2. The load capacity of your motorhome is designated by weight, not by volume, so you cannot necessarily use all available space when loading your motorhome.
3. Capacities are based on measurements prior to tank installation. Slight capacity variations can result due to installation applications.
4. Capacities shown are tank manufacturer's listed water capacity (W.C.). Actual filled LP capacity is 80% of listing due to overfilling prevention device on tank.
5. Actual towing capacity is dependent on your particular loading and towing circumstances which includes the GVWR, GAWR, and GCWR, as well as adequate trailer brakes. Please refer to the Operator's Manual of your vehicle for further towing information.
6. See separate chassis warranty.
7. See your dealer for complete warranty information.

NA Not Available

Not all items available in combination. See dealer for details.

Because features, specifications, equipment, and options may vary from those highlighted here, the buyer is responsible for confirming with the dealer the features, specifications, equipment, and options included on their specific vehicle. In addition, Winnebago's program of continuous product improvement may result in changes to vehicle specifications, equipment, model availability, and price without notice.

Unless noted, trademarks are the property of Winnebago Industries, Inc. Mercedes-Benz® is the registered trademark of Daimler AG. Froli® is the registered trademark of Froli Kunststoffwerk Fromm GmbH. Blu-Ray Disc® is the registered trademark of Sony Kabushiki Kaisha. Bluetooth® is the registered trademark of Bluetooth SIG, Inc. Tecnoform® is a registered trademark of Tecnoform S.p.A. Oxygenics® is a registered trademark of ETL, LLC. Onan® is a registered trademark of Cummins Power Generators Inc. MCD is a trademark of MCD Innovations. Truma AquaGo® is a registered trademark of Truma Gerätetechnik GmbH & Co. KG.



# MEET THE VIEW

The new Winnebago® View® is at the leading edge of RV innovation, offering unmatched freedom and functionality. Its innovative design, featuring a luxurious interior and state-of-the-art tech, redefines what it means to travel in style.



## **Your Personal RV Companion**

The View comes standard with Winnebago Connect™, our all-new intelligent RV platform that seamlessly integrates with your Winnebago app. It provides travel prep resources, automated controls with smart energy management and more.

## **Lithium Power Package**

The all-new lithium power package comes standard with a 320-amp-hour lithium battery and dedicated second alternator to charge the batteries faster while driving. The lithium battery and 240W solar panels work together to help ensure you'll have clean and quiet power when shore power isn't available.

## **Redesigned Luxury Interior**

Discover a modern, open space with innovative amenities like the power-reclining theater seating/Murphy+ bed combo (usable with slide in) and redesigned passenger-side dining area (24T), or cross-aisle bath and convertible private bedroom (24R).

## **Storage Galore**

Bring just about anything you want with the all new gear garage that easily fits 2 bikes, along with a residential size wardrobe (24T) or wardrobe under bed storage (24R).

## **Available AWD Sprinter Chassis**

Winnebago offers an optional Mercedes-Benz® all-wheel-drive Sprinter chassis featuring a 2.0L high-output turbo diesel 4-cylinder engine and 9-speed automatic overdrive transmission. Those who opt for AWD will enjoy higher ground clearance to better handle adverse weather conditions and more rugged terrain.

## **Available Low-Profile Front Cap**

The optional low-profile front cap gives you even more storage space, as well as a sleeker look. Designed so that the storage is accessible when the slide is in, this convenient addition also features interior LED lighting.





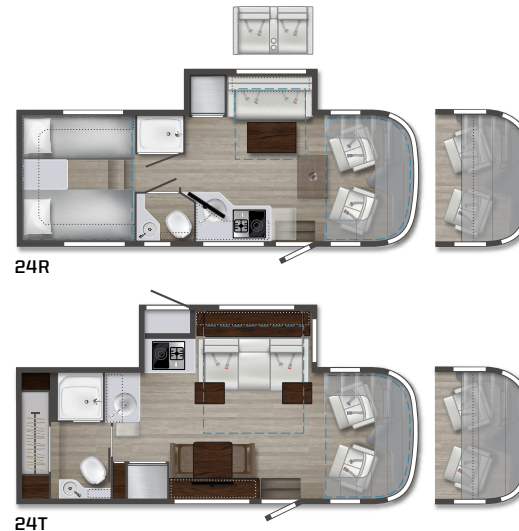


Weights & Measurements	24R	24T
Exterior Length	25'8"	25'8"
Exterior Height	10'7" <sup>A</sup> /10'10" <sup>B</sup>	10'7" <sup>A</sup> /10'10" <sup>B</sup>
Exterior Width	7'6.25"	7'6.25"
Exterior Storage (cu. ft.)	80.9*	80.9*
Awning Length	16'	16'
Interior Height	6'8"	6'8"
Interior Width	7'3"	7'3"
Freshwater Tank Capacity (gal.)	35	30
Water Heater Capacity (gal.)	Continuous	Continuous
Holding Tank Capacity - Black (gal.)	47	47
Holding Tank Capacity - Gray (gal.)	46	46
LP Capacity (lbs.)	50.76	50.76
Fuel Capacity (gal.)	24.5	24.5
GCWR (lbs.)	15,250	15,250
GVWR (lbs.)	11,030	11,030
GAWR - Front (lbs.)	4,410	4,410
GAWR - Rear (lbs.)	7,720	7,720
Wheelbase	170"	170"
Sleeps	4	3

\*Estimated storage without optional generator. Rear garage equates for 68 cu. ft. of storage.

<sup>A</sup>Mercedes-Benz® RWD Sprinter Chassis    <sup>B</sup>Mercedes-Benz® AWD Sprinter Chassis

Winnebago's continuing program of product improvement makes specifications, equipment, model availability, and prices subject to change without notice. Published content reflects the most current product information at the time of printing. Please consult your dealer for individual vehicle features and specifications.



Note: Dotted lines denote overhead storage areas. Blue dashed lines denote sleeping areas. Floorplans are representations only and are subject to change. Please contact a certified Winnebago dealer for more information.



## Exteriors



### DUNE FROST



### MISTY LAKE



### PRECIOUS METALS

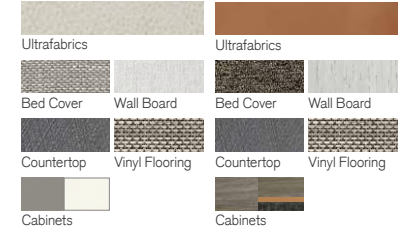


### SMOKEHOUSE

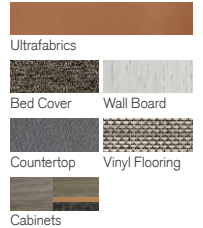
Exteriors are renderings only. Final product may vary.

## Décor

### MOD ALLURE II



### HYGGE HAUS II



**SCAN THIS QR CODE**  
TO LEARN MORE ABOUT THIS MODEL