

OUTLAW[®]
BY THOR MOTOR COACH



 **THOR**[®]
MOTOR COACH

Made to fit.

When we say
Made to Fit
we mean it.

With so many unique models available, Thor Motor Coach motorhomes are priced to fit anyone's budget – from families buying their first motorhome to full-timers looking for a roaming “dream home”.

No matter how you choose to spend your time or your money, there's a TMC motorhome that fits your needs.

Welcome to the **Outlaw**, the motorhome that is *Made to Fit* your family.

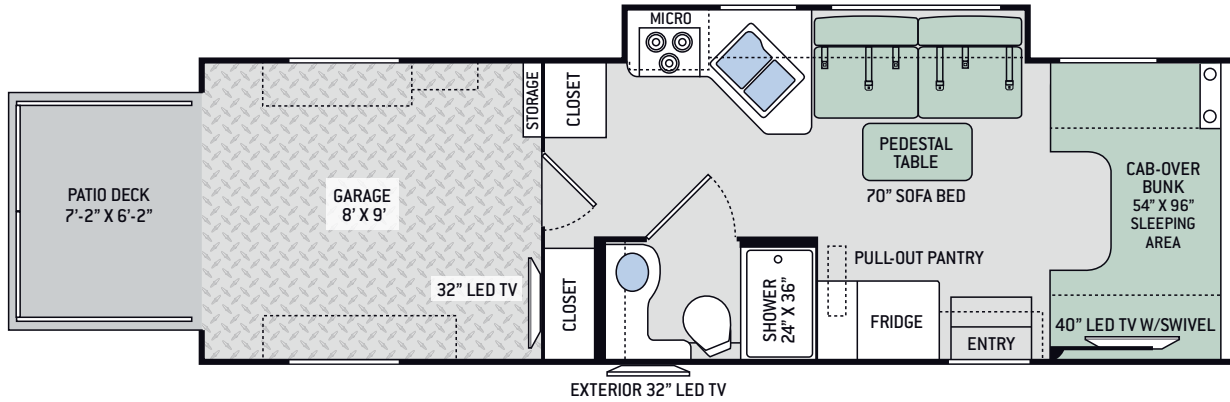


See what's new on the
Outlaw Class C for 2017.

Class C

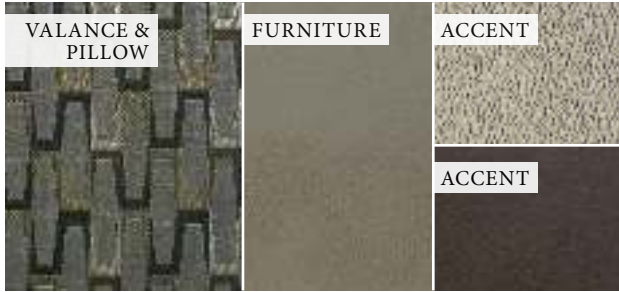


Outlaw Class C 29H Floor Plan



CLASS C	29H
Chassis	Ford
Gross Vehicle (GVWR)	14,500
Gross Combined (GCWR)	22,000
Wheel Base	219"
Exterior Length	30'-9"
Exterior Height (w/AC)	10'-10"
Exterior Width (w/o mirrors)	99"
Interior Height (living area)	84"
Awning Size	16'
Fuel (gal)	55
LPG (lbs)	40.9
Fresh/Waste/Gray Water (gal)	40 / 31 / 32
Water Heater (gal)	6
Furnace (BTUs)	19,000
Exterior Storage Capacity (cu. ft.)	17.2 (plus Garage)
Garage Capacity (lbs)	1,500

Interior Decor



ACES WILD



CHAIN REACTION



PARADISE CITY



BRAZILIAN CHERRY



SYDNEY MAPLE



COUNTERTOPS



RESIDENTIAL VINYL FLOORING

Features

CONSTRUCTION & EXTERIOR

- Ford® E-Series Chassis
- 6.8L Triton® V10, 305HP & 420 lb.-ft. Torque – TorqShift® 6-Speed Automatic Transmission
- Automatic Leveling Jacks with Touchpad Controls
- Premium One-Piece TPO Roof
- HD-MAX® Exterior with Graphics Package
- Rotocast Storage Compartments
- Flush Mount Radius Compartment Doors
- Power Patio Awning w/Integrated LED Lighting
- Patio & Rear Spot Lights
- Frameless Windows
- Drop-Down Ramp Door, Patio Deck Railings & Manual Patio Awning
- Air Ventilation Sidewall Vents in Garage
- 8,000-lb. Trailer Hitch with 7-pin Round Connector

AUTOMOTIVE & COCKPIT

- Touchscreen AM/FM Dash Radio with CD/DVD Player, Bluetooth® & Back-Up Monitor
- Heated/Remote Exterior Mirrors with Integrated Side View Cameras
- Leatherette Captain's Chairs
- Keyless Entry System
- Emergency Engine Start Switch

- Windshield Privacy Curtain
- Valve Stem Extenders
- Aluminum Running Boards
- Stainless Steel Wheel Liners

AUTOMOTIVE & COCKPIT OPTION

- Power Driver's Seat

INTERIOR

- Rubber Tread Entry Steps with Step Well Light
- Residential Vinyl Flooring Throughout
- Ceiling Ducted Air Conditioning System in Living Area
- Hard Vinyl Ceiling in Living Area
- Cab-Over Bunk Ladder
- LED Lighting
- Raised Panel Upper Cabinet Doors with Nickel Finish Hardware
- Laminate Countertops
- Leatherette Side Sleeper Sofa & Removable Pedestal Table
- Window Privacy Roller Shades
- 12-volt Attic Fan with Cover in Cab-Over
- Stainless Steel Storage Cabinet in Garage
- Tread Plate Non-Slip Flooring in Garage
- Tie Down Rings in Garage
- Ceiling Vent in Garage Area

INTERIOR OPTIONS

- Two Opposing Leatherette Jack-Knife Sofas in Garage
- Bug Screen Curtain in Garage

KITCHEN

- 6 cu. ft. Double Door Refrigerator with Smoked Acrylic Panel Inserts
- 3-Burner Gas Cooktop
- Convection Microwave Oven
- Pop-Up Countertop Outlet
- Decorative Tile Backsplash
- Large, Double Bowl Stainless Steel Sink & Single Handle Faucet w/Pull-Down Sprayer
- Waste Basket

KITCHEN OPTION

- 12-volt Attic Fan with Cover

BATHROOM

- Power Vent
- Stainless Steel Sink
- Porcelain Toilet
- Shower with Retractable Door

ENTERTAINMENT

- 40" LED TV on Manual Swivel & Blu-Ray Player in Cab-Over
- 32" LED TV in Garage

- Exterior 32" LED TV on Manual Swivel
- Bluetooth® Coach Radio System in Garage with Exterior Speakers
- Cable TV & HDMI Ready
- Digital TV Antenna
- Power Charging Center for Electronics

ELECTRICAL & PLUMBING

- Onan® RV QG 4000 Gas Generator
- 30-amp Shoreline Power Cord
- Automatic Shoreline-to-Generator Transfer Switch
- 13,500 BTU Front Roof Air Conditioner
- 5,000 BTU Air Conditioner in Garage
- Battery Disconnect Switch
- Dual Auxiliary House Batteries
- 1,000-watt Entertainment Inverter
- 6-gallon DSI Gas/Electric Water Heater
- Whole Coach Water Filtration System
- Water Heater Bypass System
- Black Tank Flush System
- Outside Shower
- Systems Control Center
- Rapid Camp® Wireless Control System

ELECTRICAL & PLUMBING OPTION

- Holding Tanks with Heat Pads

Exterior Graphics



METEOR BLAST (CLASS C)



PURE ENERGY (CLASS C)



29H | PARADISE CITY | SYDNEY MAPLE | REFRIGERATOR

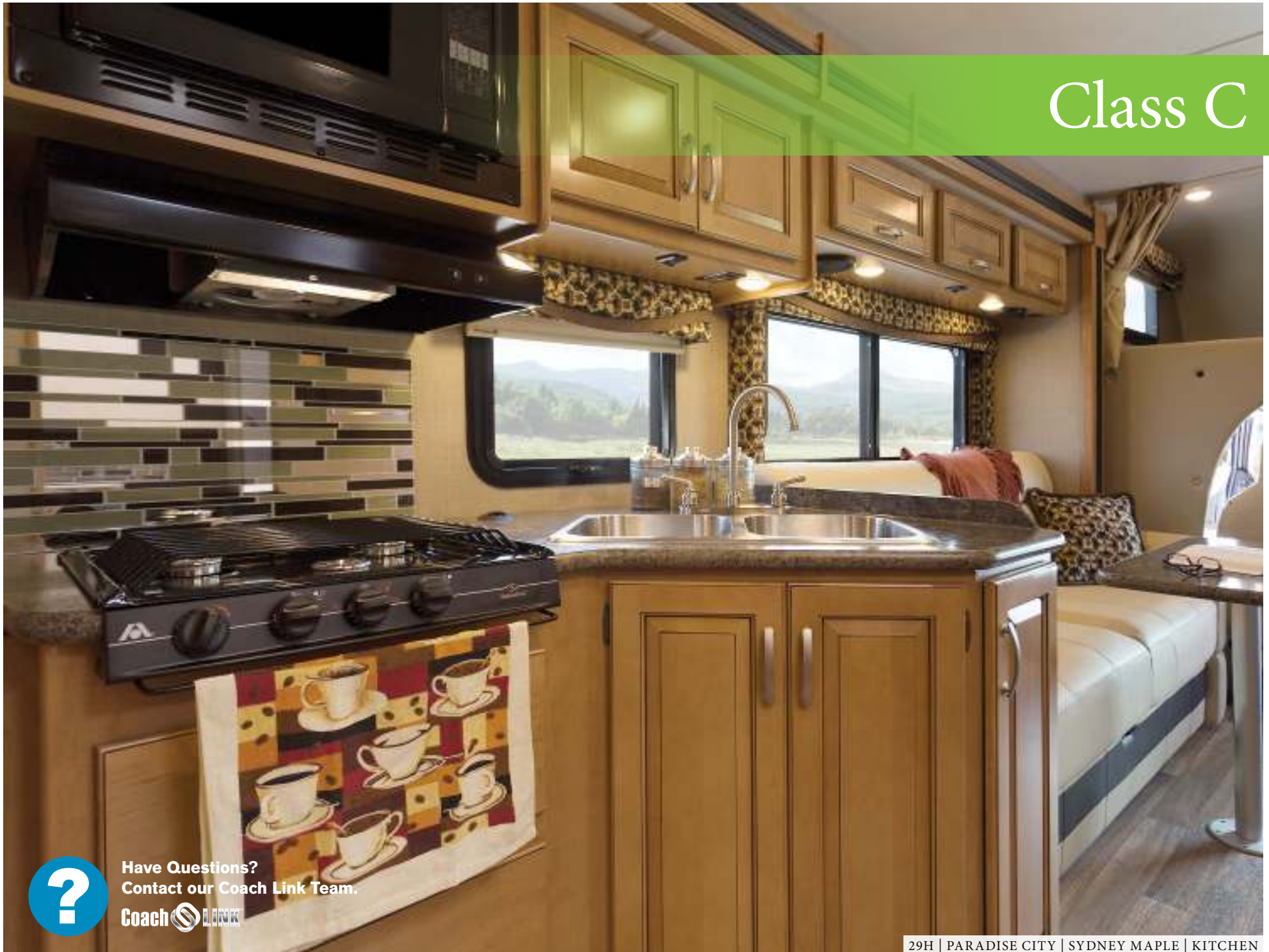


29H | PARADISE CITY | SYDNEY MAPLE | CAB-OVER BUNK & 40" LED TV



29H | PARADISE CITY | SYDNEY MAPLE | LEATHERETTE SOFA CONVERTS TO SLEEPING AREA

Class C



Have Questions?
Contact our Coach Link Team.



More than
just a motorhome.

The Outlaw Class A expands the limits of what a motorhome could be. Unique, distinctive floor plans, interiors and sleeping spaces put the Outlaw in a class of its own. When you're ready to get out of the ordinary and into the extraordinary, the Outlaw has no equal.



**See what's new on the
Outlaw Class A for 2017.**



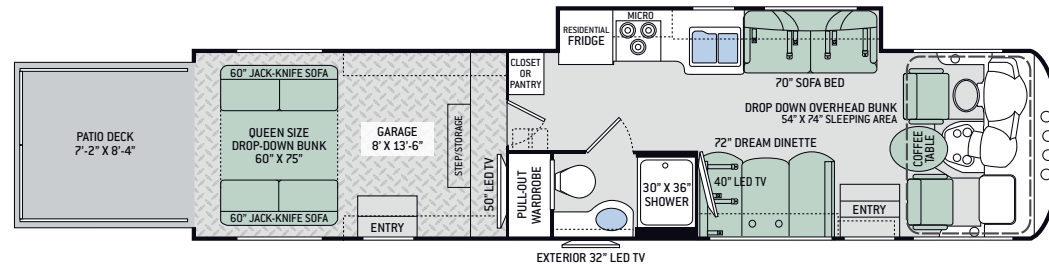
Class A



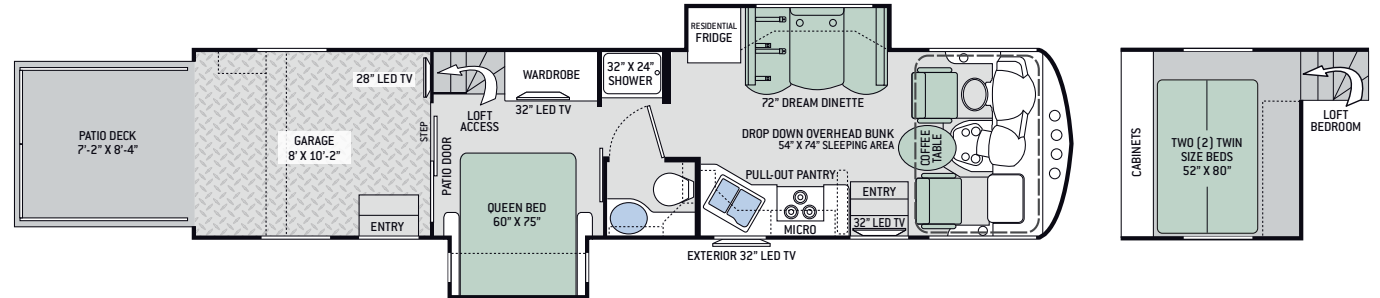
37BG | PARADISE CITY | HIGH-GLOSS GLAZED PACIFIC CHERRY | FRONT TO BACK

Outlaw Class A Floor Plans

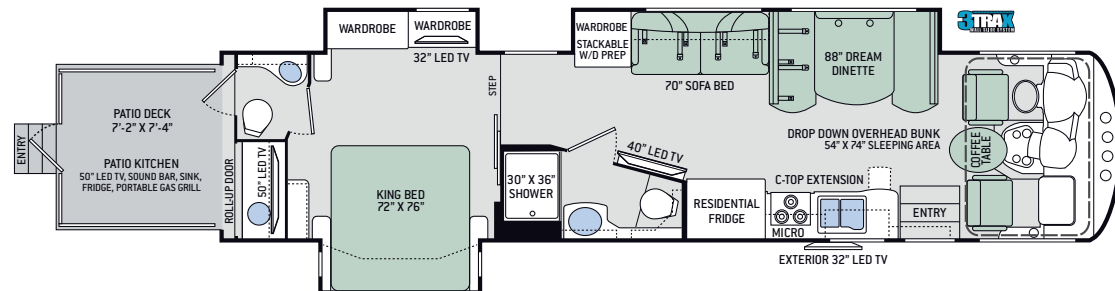
CLASS A	37BG
Chassis	Ford
Gross Vehicle (GVWR)	26,000
Gross Combined (GCWR)	30,000
Wheel Base	252"
Exterior Length (w/o ladder)	38'-6"
Exterior Height (w/AC)	13'-3"
Exterior Width (w/o mirrors)	101"
Interior Height	80"-97"
Awning Size	10' & 18'
Fuel (gal)	80
LPG (lbs)	105
Fresh/Waste/Gray Water (gal)	100 / 43 / 43
Water Heater (gal)	6
Furnace (BTUs)	35,000
Exterior Storage Capacity (cu. ft.)	117
Garage Capacity (lbs)	2,500



CLASS A	37RB
Chassis	Ford
Gross Vehicle (GVWR)	26,000
Gross Combined (GCWR)	30,000
Wheel Base	252"
Exterior Length (w/o ladder)	38'-9"
Exterior Height (w/AC)	13'-3"
Exterior Width (w/o mirrors)	101"
Interior Height	80"-97"
Awning Size	9' & 13'
Fuel (gal)	80
LPG (lbs)	105
Fresh/Waste/Gray Water (gal)	100 / 43 / 43
Water Heater (gal)	6
Furnace (BTUs)	35,000
Exterior Storage Capacity (cu. ft.)	127
Garage Capacity (lbs)	2,500



CLASS A	38RE
Chassis	Ford
Gross Vehicle (GVWR)	26,000
Gross Combined (GCWR)	30,000
Wheel Base	252"
Exterior Length (w/o ladder)	39'-11"
Exterior Height (w/AC)	13'-3"
Exterior Width (w/o mirrors)	101"
Interior Height	80"-104"
Awning Size	19'
Fuel (gal)	80
LPG (lbs)	105
Fresh/Waste/Gray Water (gal)	150 / 40 Front - 29 Rear / 43
Water Heater (gal)	6
Furnace (BTUs)	35,000 F - 20,000 R
Exterior Storage Capacity (cu. ft.)	158
Garage Capacity (lbs)	2,500



Watch our
in-wall
3TRAX™
system in
action.

Features

CONSTRUCTION & EXTERIOR

- Ford® F-53 Chassis - 6.8L Triton® V10 Engine, 320HP, 460 lb.-ft. Torque - TorqShift® 6-Speed Automatic with Overdrive Transmission
- Fiberglass Front Cap
- Full-Body Paint with Gel Coated Sidewalls
- Automatic Leveling Jacks with Touchpad Controls
- Basement Pass-Through Storage
- Rotocast Storage Compartments
- Power Patio Awning with Integrated LED Lighting
- 3TRAX® Wall Slide System (38RE)
- Rear Spot Lights & Patio Lights
- Electric Entry Steps
- Frameless Windows
- Pet-Link™ Multi-Purpose Tie-Down
- Remote Fuel Filling Station w/ Pump and Nozzle (37BG & 37RB)
- Drop-Down Zero-G® Ramp Door, Snap-In Patio System & Power Patio Awning (37BG & 37RB)
- Drop-Down Zero-G® Ramp Door, Snap-In Patio System, Staircase to Ground Level & Power Patio Awning (38RE)
- Air Ventilation Sidewall Vents in Garage (37BG & 37RB)
- Rear Power Patio Awning for Patio Deck™
- 8,000-lb. Trailer Hitch with 7-pin Round Connector

CONSTRUCTION & EXTERIOR OPTION

- Frameless Dual Pane Windows

AUTOMOTIVE & COCKPIT

- Touchscreen Dash Radio with Bluetooth®
- Back-Up Monitor
- Heated/Remote Exterior Mirrors with Integrated Side View Cameras

- Reclining/Swivel Leatherette Captain's Chairs with Stow-Away Coffee Table
- Emergency Engine Start Switch
- Power Solar & Privacy Shades on Windshield
- Manual Roller Shades on Side Windows
- Dash Fans
- Map Light
- Fog Lights
- 22.5" Tires with Aluminum Wheels
- Valve Stem Extenders on Rear Wheels
- Rear Mud Flap
- Dash Workstation with 110-volt & 12-volt Outlets

INTERIOR

- Rubber Tread Entry Steps with Step Well Light
- Residential Vinyl Flooring Throughout
- 80" Interior Height (At Lowest Point)
- LED Lighting
- Ceiling Ducted Air Conditioning System in Living Area (37RB includes Loft)
- High-Gloss Glazed Cabinetry with Solid Wood Raised Panel Cabinet Doors & Nickel Finish Hardware
- Leatherette Sofa (37BG & 38RE)
- Two (2) Opposing Jack-Knife Sofas in Garage (37BG)
- Leatherette Dream Dinette® Booth
- Electric Fireplace with Remote Control (38RE)
- Window Solar & Privacy Roller Shades in Living Area
- Tread Plate Non-Slip Flooring, Tie Down Rings & Stainless Steel Storage Cabinet in Garage (37BG & 37RB)
- VersaTrack Garage Storage System (37BG)
- 12-volt Attic Fan in Garage (37BG & 37RB)

INTERIOR OPTIONS

- Bug Screen Curtain in Garage (37BG & 37RB)
- Two (2) Opposing Jack-Knife Sofas in Garage (37RB)

KITCHEN

- 11 cu. ft. Double Door Residential Refrigerator (37BG & 37RB)
- 22 cu. ft. Stainless Steel Side-by-Side Residential Refrigerator (38RE)
- 3-Burner Gas Cooktop with Oven
- 30" Over-the-Range Stainless Steel Microwave Oven
- Solid Surface Countertops & Sink Cover
- Large, Double Bowl Sink & Single Handle Faucet w/Pull-Down Sprayer
- 12-volt Attic Fan (37BG)
- 12-volt Attic Fan with Cover (37RB & 38RE)

BEDROOM & BATHROOM

- Vaulted Ceiling (38RE)
- Denver Mattress® King Size Bed with Designer Headboard (38RE)
- Denver Mattress® Queen Size Bed (37RB)
- Denver Mattress® Queen Size Drop-Down Bunk in Garage (37BG)
- Power Drop-Down Hide-Away Overhead Bunk with Cotton Cloud™ Mattress & Bunk Ladder
- Two (2) Twin Size Beds in Loft (37RB)
- Window Privacy Roller Shades in Loft (37RB)
- 12-volt Attic Fan in Bathroom
- Foot Flush Porcelain Toilet
- Shower with Glass Door
- Stainless Steel Bathroom Sink

ENTERTAINMENT

- 40" LED TV in Living Area (37BG & 38RE)
- 32" LED TV in Living Area (37RB)
- Blu-Ray Player in Living Area

- 32" LED TV in Bedroom (37RB & 38RE)
- 50" LED TV in Garage (37BG)
- 28" LED TV in Garage (37RB)
- Exterior 32" LED TV on Manual Swivel
- TV Ready in Loft (37RB)
- Cable TV & HDMI Ready
- Digital TV Antenna
- Bluetooth® Coach Radio System with Exterior Speakers
- Power Charging Center for Electronics (37BG & 38RE)
- Rear Patio Outside Kitchen including 50" LED TV, Bluetooth® Sound Bar, 2.6 cu. ft. Refrigerator, Sink & Portable Gas Grill (38RE)

ELECTRICAL & PLUMBING

- Onan® RV QG 5500 Gas Generator
- 50-amp Shoreline Power Cord
- Dual 13,500 BTU Low Profile Roof Air Conditioners
- 5,000 BTU Air Conditioner in Garage (37RB)
- 6,000 BTU Air Conditioner in Garage (37BG)
- 6,000 BTU Air Conditioner with Remote in Bedroom (38RE)
- Battery Disconnect Switch
- Four (4) Auxiliary House Batteries
- 1800-watt Inverter
- 55-amp Converter
- 6-gallon DSI Gas/Electric Water Heater
- Whole Coach Water Filtration System
- Water Heater Bypass System
- Enclosed & Heated Holding Tanks
- Black Tank Flush System
- Washer/Dryer Prep (38RE)
- Outside Shower
- Systems Control Center
- Rapid Camp® Wireless Control System

Relax & Unwind

Thanks to a bed that was inspired by your own, **Outlaw Class A** bedrooms boast a Denver Mattress® and stylish design.

You can also find plenty of areas to relax, unwind and get a good night's rest for the next day's adventures.



37BG | PARADISE CITY | PACIFIC CHERRY | JACK-KNIFE SOFAS CONVERT TO SLEEPING AREA



37BG | PARADISE CITY | PACIFIC CHERRY
LOWER JACK-KNIFE SOFAS IN BEDROOM

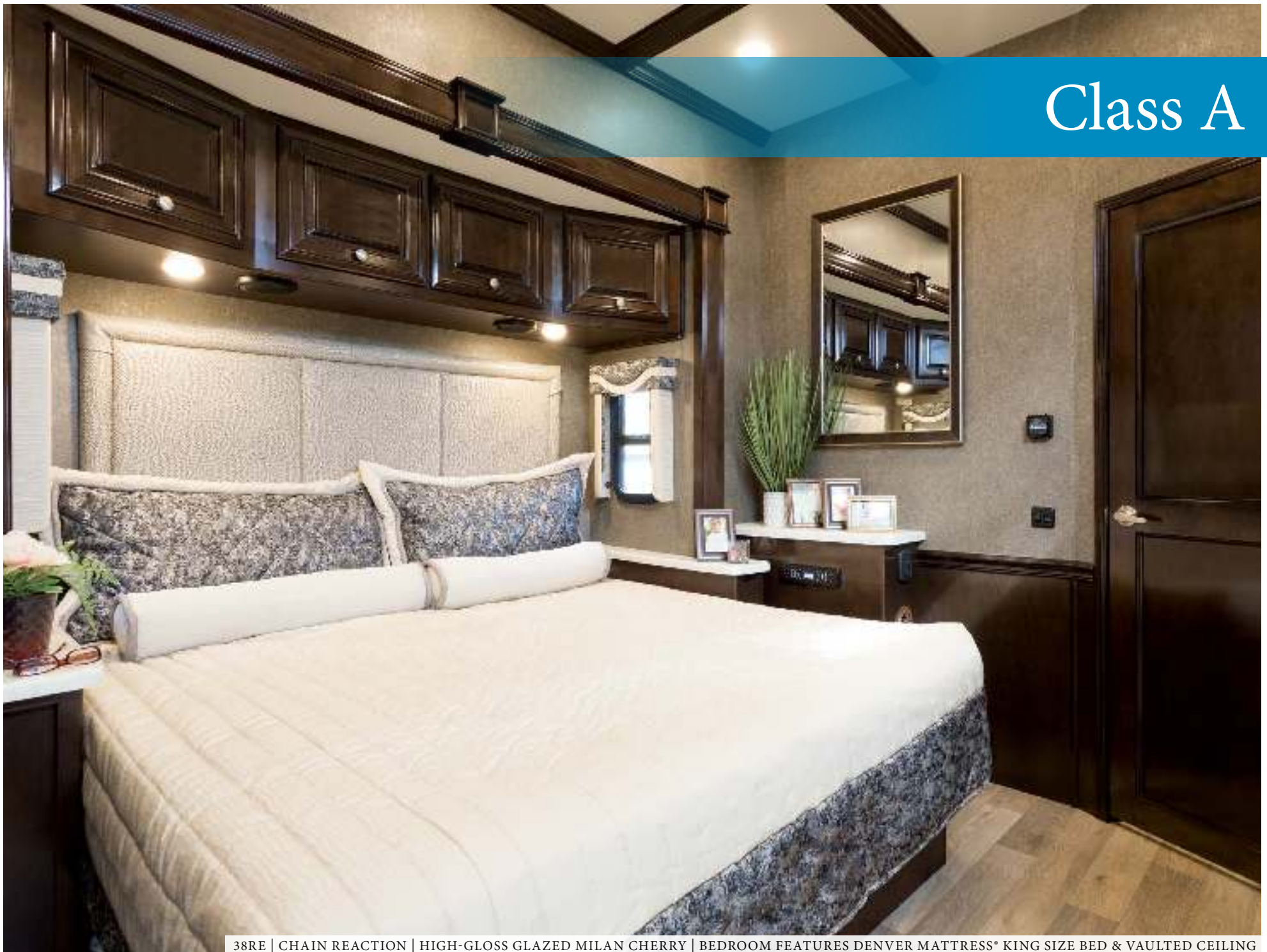


ALL CLASS A FLOOR PLANS
FEATURE A DASH WORKSTATION



37BG | PARADISE CITY | PACIFIC CHERRY
BEDROOM/GARAGE WITH 50" LED TV

Class A

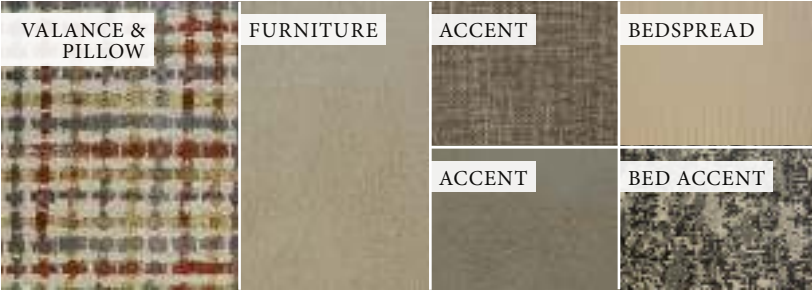


38RE | CHAIN REACTION | HIGH-GLOSS GLAZED MILAN CHERRY | BEDROOM FEATURES DENVER MATTRESS® KING SIZE BED & VAULTED CEILING

Interior Decor



ACES WILD



CHAIN REACTION



PARADISE CITY



COUNTERTOPS



RESIDENTIAL VINYL FLOORING



HIGH-GLOSS GLAZED MILAN CHERRY



HIGH-GLOSS GLAZED PACIFIC CHERRY



HIGH-GLOSS GLAZED RESORT CHERRY

Exterior Graphics



CHERRY FIRE FULL-BODY PAINT



SUPER NOVA FULL-BODY PAINT



OVERDRIVE FULL-BODY PAINT



RED ROCK FULL-BODY PAINT

Class A: The Ultimate Patio Set-Up



Thor Motor Coach features the Zero-G[®] ramp door and patio rail kit on Outlaw Class A floor plans, allowing you to raise and lower your ramp door with a finger's touch. It feels virtually weightless and features a clean exterior look with automotive style latches. Setting up the patio has never been easier as the patio kit opens up, slides out and then snaps into place. There's no more lifting the patio rails or using assembling pins.

Zero-G[®] Ramp Door

- No more hinges or extra hardware.
- Zero-gravity resistance! Easily raise and lower the door with just one finger.
- Automotive style latching.

Snap-In Patio System

- Set up your patio deck in seconds with the unique sliding design. It's a snap!
- Residential strength, quality and design.



Watch how easy it is to use the Zero-G[®] Door & Patio System on Outlaw Class A motorhomes.

Meals *Your Way*, While You're Away

Whether you're preparing a home cooked meal or storing leftovers from that great local restaurant, the well-equipped kitchen will keep you happy and healthy. The **Outlaw Class A** features a gas cooktop with oven, microwave, plenty of storage and Dream Dinette® Booth.

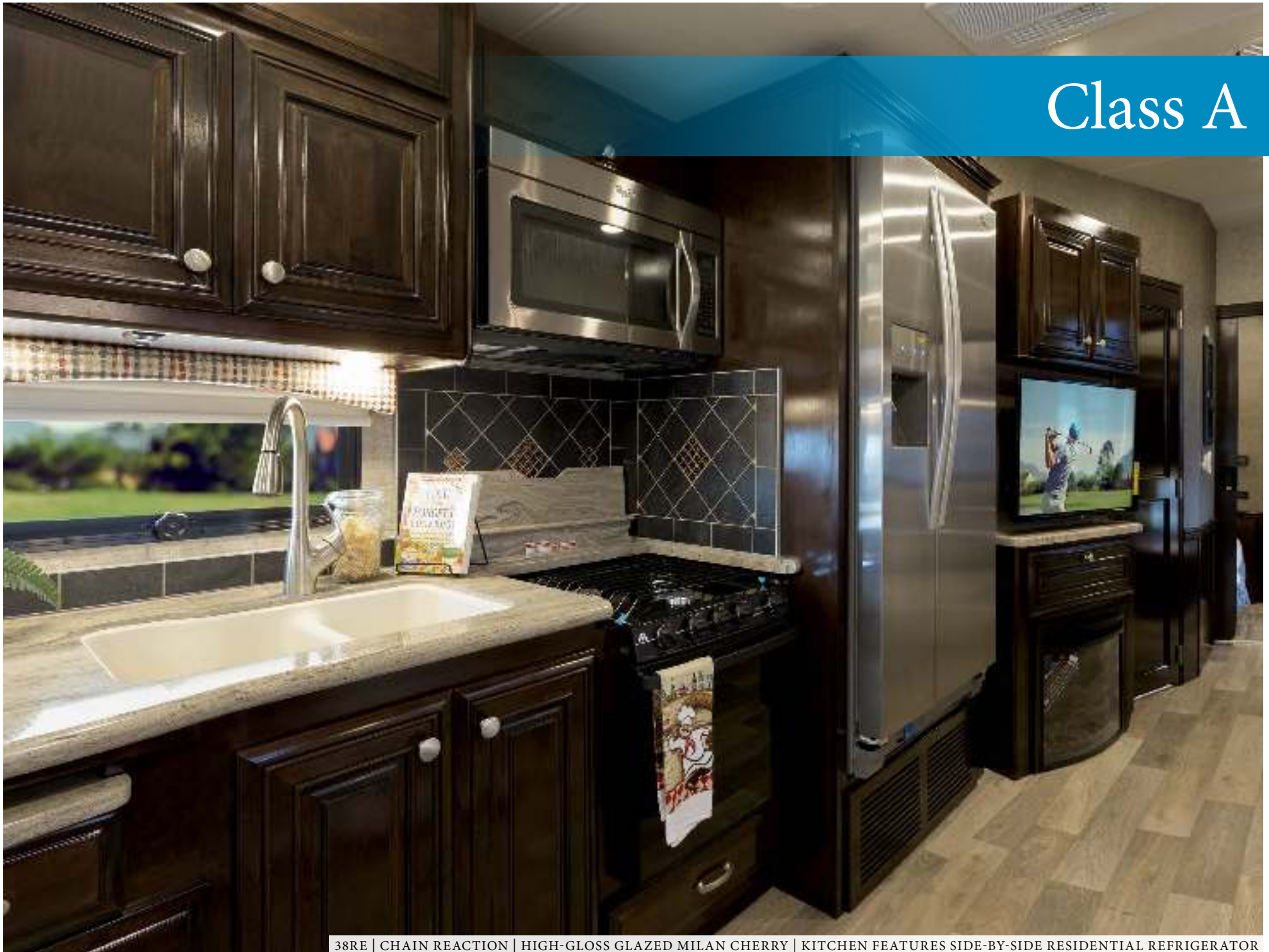


37BG & 37RB | RESIDENTIAL REFRIGERATOR



37RB | ACES WILD | HIGH-GLOSS GLAZED RESORT CHERRY | FRONT TO BACK

Class A



38RE | CHAIN REACTION | HIGH-GLOSS GLAZED MILAN CHERRY | KITCHEN FEATURES SIDE-BY-SIDE RESIDENTIAL REFRIGERATOR



37RB | ACES WILD | HIGH-GLOSS GLAZED RESORT CHERRY | KITCHEN

Class A



Have Questions?
Contact our Coach Link Team.

Coach  LINK

IMPORTANT-PLEASE READ: This brochure reflects product design, fabrication, material, components and specifications at the date of printing, which date is disclosed below. **Please visit us online at ThorMotorCoach.com or consult with your selling dealership for the latest in standards, options, specification and technical information.** Photographs in the brochure may depict optional equipment or may only be available in certain floor plans. Components, appliances and the chassis may have been manufactured in a calendar year before the vehicle's designated model year. All capacities are approximate. The actual length of the vehicle may differ from that indicated in the brochure due to variances in the manufacturing processes and/or installed components. All dry weights are based on standard model features and do not include optional features or equipment. Component part and appliance manufacturers issue limited warranties covering portions of the vehicle not covered under the limited warranty we issue. Copyright Thor Motor Coach, Inc. © OH 04/14/17



YOUR LOCAL THOR MOTOR COACH DEALER



LA MESA RV
EXPERIENCE LIFE
www.lamesarv.com
800-496-8778



Made to fit.

thormotorcoach.com/outlaw

P.O. Box 1486, Elkhart, IN 46515 Sales Department: 800.860.5658 Customer Service: 877.855.2867