

North Trail



Serial #: 1UJB80BM9T1JY9070
 Model: 220MB NORTH TRAIL TT

Model Year: 2026 Dealer Name: LA MESA RV CENTER
 401 CORDERO MESA DRIVE NW
 ALBUQUERQUE, NM 87120
 USA

AN225018

Manufacturer's Suggested Retail Price \$51,481.00

TOTAL AMOUNT DOES NOT INCLUDE STATE AND LOCAL TAXES OR LICENSE FEES. THE PRICE SHOWN ABOVE MAY OR MAY NOT BE REPRESENTATIVE OF THE ACTUAL SELLING PRICE OF SIMILAR RECREATIONAL VEHICLES IN YOUR AREA.

Standard Equipment

Optional Equipment

THE FOLLOWING ITEMS ARE STANDARD ON THIS MODEL

OPTIONAL EQUIPMENT INSTALLED ON THIS VEHICLE BY MANUFACTURER

STANDARD EXTERIOR EQUIPMENT
 1.5 in. fresh water drain valve
 Aerodynamic, rounded front profile with aluminum framing
 Strong Foundation: American-made Norco Z-frame with integrated A-frame
 Battery quick-disconnect
 Dark-tinted safety-glass windows
 Exterior TV 120V recept and cable hook-ups
 Front diamond plating
 Galvanized steel and impact resistant wheel wells
 Exclusive TrussTXL roof system (rated for 4500 lbs)
 Outdoor camp kitchen with galvanized steel bases (select models)
 PVC roofing membrane (limited lifetime warranty)
 Swing-out entry door assist handle
 Slide-topper prepped
 Solid step
 60K BTU on demand water heater

STANDARD INTERIOR EQUIPMENT
 Upgraded 4" dinette cushions with higher-density foam
 4 in. soft-touch bunk mats (select models)
 60 x 80 in. residential queen beds (60 x 76 in. in Murphy bed models)
 75 lb. full extension drawer guides
 Hidden-hinged cabinet doors
 LED lighting throughout
 Seamless countertops throughout
 Residential vinyl flooring throughout
 Solid hardwood maple cabinet doors
 USB charging ports (multiple locations throughout)
 Bunk capacity - 600lb double bunks and 300lb single bunks
 Interior speakers
 Roller shades with radiant barrier backer
 Plywood dinette, bed, bunk and shower/tub bases
 Battery disconnect
 Framed in window s with lumber core styles
 C.P.A.P. prepped bedroom (both sides)

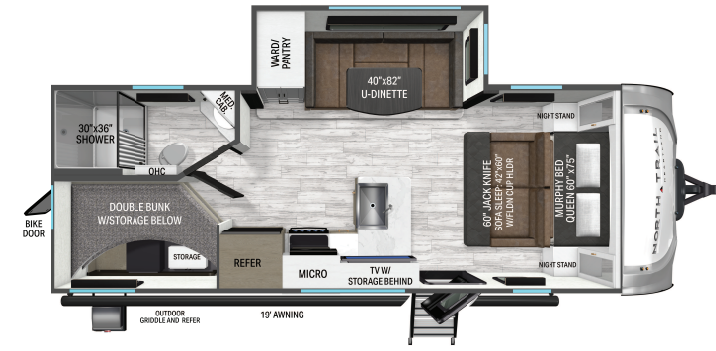
CAMPING IN COMFORT PACKAGE
 Self-adjusting electric brakes
 Tamarack tires with 6 year pro-rated warranty
 13,500 BTU roof-mounted Quiet Series A/C with 12% increase in CFM & 10% reduction in noise
 CoreShield walls - 2 in. vacuum bonded laminated sidewalls and floors with 2lb density foam (including slide end walls and rear wall)
 Azdel Onboard® Composite on interior & exterior of all vacuum bonded sidewalls
 20 lb. LP gas bottles with auto-regulator, ABS cover, & fill gauge
 55 gal. fresh water tank
 Automotive-style aluminum rims
 Black tank flush
 Detachable power cord
 Inverter pre-wire outlets
 Max-length power awning with LED light
 On-demand 60,000 BTU water heater
 Power tongue jack
 Rear 2" receiver prep
 Residential cabinetry w/ large doors and drawers
 Rear back-up camera prep
 Under-mount spare tire, sewer hose storage compartment
 Hidden cabinet hinges
 Roller shades w/ radiant barrier backer
 5K BTU Electric fireplace (N/A 210MB, 190MB, 240RK)

PREMIUM PACKAGE
 Invision appliance package with 11 cu. ft. 12V refrigerator
 App monitored TPMS
 ThermoShield (zero to 100 degree tested weather insulation package)
 Front slam-latch baggage doors
 Solid fold-down step w/ aluminum tread on main entry door step
 LED smart TV
 Contemporary graphics package
 Porcelain foot-flush toilet
 PowerUp Solar 1 : (1) 200W solar panel and 30-amp digital controller
 Stainless steel single basin kitchen sink with high rise pullout faucet and butcher block cutting board
 Rear exterior ladder
 Dark tinted privacy windows

Base price 41,243.00
 USA STANDARDS n/c
 CAMPING IN COMFORT PACKAGE 6,000.00
 PREMIUM PACKAGE 3,750.00
 NO CALIBER PACKAGE n/c
 POWERUP SOLAR 1 PACKAGE n/c
 15,000 BTU AC 300.00
 20# LP GAS BOTTLES n/c
 2" REAR RECEIVER 188.00
 BOOTH DINETTE n/c

UNIT TOTAL **51,481.00**

DEALER INSTALLED OPTIONS



DIMENSIONS

Exterior height:.....128.63"
 Exterior width:.....96.00"

CAPACITIES

Fresh water tank (gals.):...55.00
 Gray water tank (gals.):...30.50
 Black water/toilet tank (gals):.....30.50
 Propane (lbs.):.....40
 Propane (gals.):......9
 Water heater (gals.):.....0.25

TIRES

Tire size (front):.....ST205/75R14D
 Tire size (mid):.....
 Tire size (rear):.....ST205/75R14D

Some dimensions may be rounded and may vary from the actual dimensions

***Weights may be estimated calculations and may vary from the actual weight

- refer to the vehicle weight labels for actual weights***

Floorplans, features and specifications are subject to change without notice.