



Odyssey SE



Serial #: 1JSLECB1R1G28069
 Model: 22CF ODYSSEY SE MHC
 VIN#: 1FDXE4FN6RDD01688
 Model Year: 2024 Dealer Name:

Manufacturer's Suggested Retail Price \$136,718.00

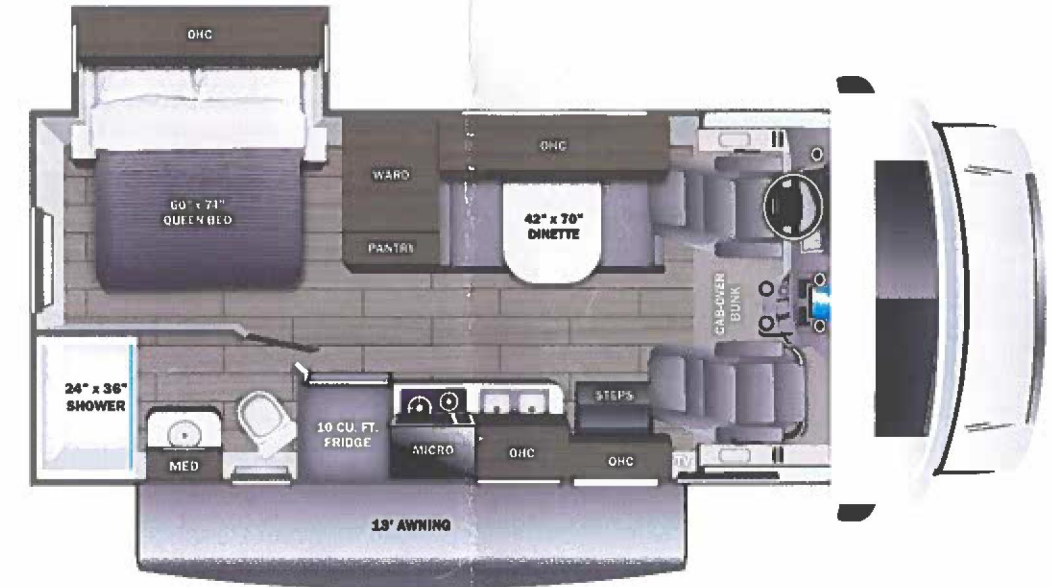
TOTAL AMOUNT DOES NOT INCLUDE STATE AND LOCAL TAXES OR LICENSE FEES. THE PRICE SHOWN ABOVE MAY OR MAY NOT BE REPRESENTATIVE OF THE ACTUAL SELLING PRICE OF SIMILAR RECREATIONAL VEHICLES IN YOUR AREA.

Standard Equipment

Optional Equipment

THE FOLLOWING ITEMS ARE STANDARD ON THIS MODEL AT NO EXTRA CHARGE

OPTIONAL EQUIPMENT INSTALLED ON THIS VEHICLE BY MANUFACTURER



DIMENSIONS

Exterior height:.....138.00"
 Exterior width:.....100.00"

CAPACITIES

Fresh water tank (gals.):...43.50
 Gray water tank (gals.):...40.00
 Black water/toilet tank (gals.):.....31.00
 Propane (lbs.):.....41
 Propane (gals.):.....9
 Water heater (gals.):.....6.00

TIRES

Tire size (front):.....LT225/75R16E
 Tire size (mid):.....
 Tire size (rear):.....LT225/75R16E

Base price	130,718.00
CARBON	n/c
USA STANDARDS	n/c
24 FD E45 14500 158"	
7.3L WHITE RC10	n/c
CUSTOMER VALUE PACKAGE	6,000.00
NO HYDRAULIC AUTO LEVELING JACKS	n/c
NO SOLAR PANEL	n/c
STANDARD HOUSE BATTERY	n/c

This is provided as an information resource only. Previous owner(s) may have removed, altered or changed After the unit was originally delivered.

UNIT TOTAL	136,718.00
DEALER INSTALLED OPTIONS	

- STANDARD EXTERIOR EQUIPMENT**
- Ford® E-450 chassis
 - GVWR- 14,500 lb.
 - GCWR- 22,000 lb.
 - 7.3L V-8 325 HP engine with 450 ft.-lb. torque
 - 6-speed TorqShift® series transmission with overdrive
 - 210-amp alternator
 - 7,500 lb. hitch with 750 lb. tongue capacity and 7-pin plug
 - 55 gal. fuel tank
 - CatStrap™ catalytic converter protection
 - E-rated highway tires- LT225/75R16
 - Tire pressure monitoring system (TPMS)
 - 12V chassis battery
 - Power anti-lock brakes with power steering
 - TuffShell™ vacuum-bond laminated roof, floor and sidewalls
 - Bead-foam insulation (R-24 max roof, R-9 max floor, R-5 max walls)
 - TPO laminated roof
 - Aluminum running boards
 - Fiberglass exterior walls with vinyl graphics
 - Leveling jack prep
 - Entrance door with industry's largest travel-view window
 - Electric-powered entrance step with integrated house battery compartment
 - Third brake light
 - Roof ladder
 - 4 in. bumper tube sewer hose storage
 - Cable TV hookup with RG-6 coax
 - Digital antenna with signal booster
 - 4,000W generator
 - Solar prep
 - 12V house battery
 - Transfer switch with reverse polarity protection
 - 30-amp electrical service
 - 12.2 gal. propane tank (41 lb.)
 - LP quick-connect hookup
 - Exterior utility center
 - Winterization drain system
 - Outside shower
 - 12V demand water pump
 - Water filtration system

- STANDARD INTERIOR EQUIPMENT**
- Remote-controlled, side-view mirrors
 - Hill start assist
 - Tilt steering wheel
 - Cruise control
 - Electronic stability control
 - Traction control
 - Power windows and door locks
 - Auxiliary start switch
 - Driver and passenger airbags
 - Overhead bunk with 750 lb. capacity
 - Privacy curtain for cab area
 - 84 in. ceiling height
 - High-intensity, recessed LED ceiling lights
 - Hardwood cabinet doors
 - Ball-bearing drawer guides
 - Entegra-exclusive, easy-operation legless dinette table
 - 2-point lap safety belts in all designated seating locations
 - Car seat tethers (select floorplans)
 - Interior entrance door grab handle
 - Interior command center
 - Pleated blackout shades
 - 13,500 BTU ducted A/C
 - 30,000 BTU auto-ignition furnace
 - 6 gal. gas/electric DSI auto-ignition water heater
 - Smoke alarm
 - Carbon monoxide detector
 - Fire extinguisher
 - 10 cu. ft. 12V refrigerator
 - 2-burner cooktop with flush cover
 - Convection microwave oven
 - Stainless steel kitchen sink
 - Decorative kitchen backsplash
 - Queen-size bed with bedspread
 - Under-bed storage (select models)
 - Large wardrobes
 - Shower with decorative ABS surround and skylight
 - Stainless steel bathroom sink
 - Toilet with foot flush
- CUSTOMER VALUE PACKAGE**
- One-piece, seamless, fiberglass front cap
 - Automotive-bonded panoramic window in front cap with power shade
 - Heated holding tanks (12V pads)
 - Electric patio awning
 - Black holding tank sprayer
 - Backup camera
 - LED HD Smart TV

Some dimensions may be rounded and may vary from the actual dimensions
 Weights may be estimated calculations and may vary from the actual weight - refer to the vehicle weight labels for actual weights
 Floorplans, features and specifications are subject to change without notice.