



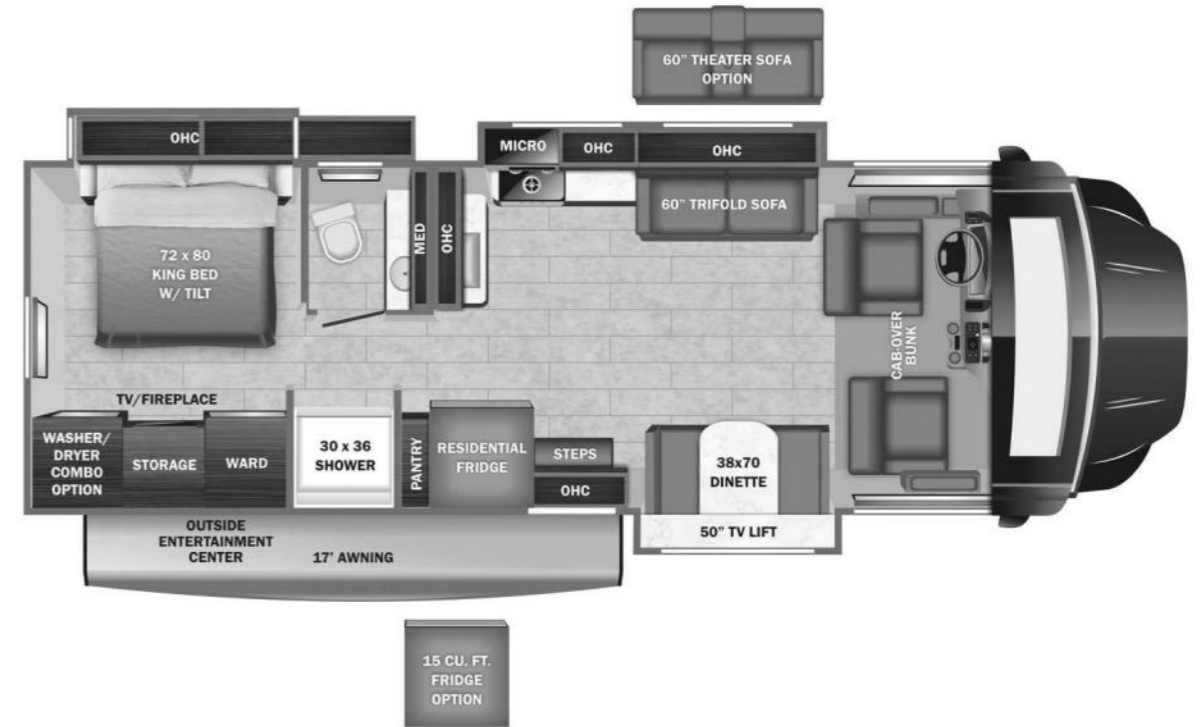
Accolade XT



Serial #: 1JSNECBT1P1JL8055
 Model: 35L ACCOLADE XT MHC
 VIN#: 1FDFF6LT3NDA26329
 Model Year: 2023 Dealer Name:

Manufacturer's Suggested Retail Price \$341,535.00

TOTAL AMOUNT DOES NOT INCLUDE STATE AND LOCAL TAXES OR LICENSE FEES. THE PRICE SHOWN ABOVE MAY OR MAY NOT BE REPRESENTATIVE OF THE ACTUAL SELLING PRICE OF SIMILAR RECREATIONAL VEHICLES IN YOUR AREA.



Standard Equipment

Optional Equipment

THE FOLLOWING ITEMS ARE STANDARD ON THIS MODEL AT NO EXTRA CHARGE

OPTIONAL EQUIPMENT INSTALLED ON THIS VEHICLE BY MANUFACTURER

- STANDARD EXTERIOR EQUIPMENT**
- Ford® F550 4X4 chassis (32U)
 - Ford® F600 4X4 chassis (35L)
 - GVWR - 19,500 lb. (32U), 22,000 lb. (35L)
 - GCWR - 31,500 lb. (32U), 34,000 lb. (35L)
 - 6.7L Power Stroke V8 Turbo diesel engine with block heater - 330 HP at 2,400 RPM and 825 ft. lb. torque at 2,000 RPM
 - 10 speed automatic transmission
 - 332 amp alternator (dual)
 - Ford® AdvanceTrac® with RSC® (roll stability control) and trailer sway control
 - Audible lane departure warning and pre-collision assist with automatic emergency braking system
 - Integrated trailer brake controller
 - Ford® SYNC® 3 infotainment center with navigation
 - All-terrain tires - 245/70R19.5
 - HiSpec matte black aluminum rims
 - 2 in. BDS radius arm suspension lift
 - 12,000 lb. rear hitch receiver
 - 7-pin plug
 - Single chassis battery (750 CCA 78 AH)
 - Dual fuel tanks (26.5 gal. and 40 gal.)
 - TuffShell™ vacuum-bond laminated roof, floor and sidewalls
 - Bead-foam insulation (R-24 max roof, R-9 max floor, R-8 max walls)
 - One-piece, seamless, crowned fiberglass roof
 - Premium Sikkens full-body paint
 - Automatic hydraulic leveling jacks
 - Electric-powered entrance step
 - Slideout cover awnings
 - Exterior entertainment center with outside speakers, LED HD Smart TV and Bluetooth® receiver
 - Winegard® In-motion satellite dish
 - Full pass-through storage compartments with lockable slam latch doors
 - 24.5 gal. propane tank (83 lb.)
 - LP quick-connect hookup
 - Exterior utility center
 - Winterization drain system
 - Black tank flush
 - Outside shower
 - 12V demand water pump
 - Onan® 6,000W Quiet Diesel generator and auto-gen start
 - Transfer switch with reverse polarity protection
 - Flush-mount LED marker lights
 - Third brake light

- STANDARD INTERIOR EQUIPMENT**
- 8-way power driver seat
 - Power windows and door locks
 - Tilt steering wheel
 - A/C and cruise control
 - Auxiliary start switch
 - Custom-molded ABS surround in cab-over area
 - Overhead bunk with 750 lb. capacity
 - Firefly Multiplex system
 - 84 in. interior ceiling height with padded vinyl ceiling
 - High-intensity, recessed LED ceiling lights
 - Deluxe hidden cabinet hinges
 - Ball-bearing drawer guides
 - Entegra-exclusive, easy-operation legless dinette table
 - 2-point lap safety belts in all designated seating locations
 - 50 amp service
 - (2) 6V AGM house batteries
 - 30,000 BTU auto-ignition furnace
 - Furrion® electric fireplace (35L)
 - LED HD Smart TV in living area
 - LED HD Smart TV in bedroom
 - Cable TV hookup with RG-6 coax
 - Winegard® 2.0 Wi-Fi/4G antenna
 - 10 gal. gas/electric water heater
 - LED-lit, solid-surface kitchen countertops with recessed stainless steel sink and sink covers
 - Pull-out countertop extension (select models)
 - Water filtration system
 - Decorative shower surround with glass door, skylight and light
 - Macerating porcelain toilet
 - Powered roof vent in bathroom with wall switch
 - Walk-around, king-size bed with bedspread and nightstands
 - Under-bed storage (select models)
 - Large wardrobes
 - Smoke alarm
 - Carbon monoxide detector

- CUSTOMER VALUE PACKAGE**
- E-Z DRIVE™ PREMIER: Computer-balanced driveshaft, front and rear heavy-duty stabilizer bars, Hellwig® helper springs, Koni® shocks
 - One-piece, seamless, fiberglass front cap with auxiliary flood lights
 - One-piece, seamless, fiberglass rear cap with auxiliary flood lights
 - Automotive-bonded, panoramic window in front cap with power shade
 - 15,000 BTU A/C unit with heat pump and second 13,500 BTU A/C unit
 - Electric legless patio awning with LED lights
 - 2,000W pure sine wave inverter
 - 200W solar panel with dual controller
 - Two-burner induction cooktop
 - Backup and side-view cameras
 - Residential refrigerator
 - Convection microwave oven

Base price	309,300.00
Cold Spring	n/c
Arcadian Ash Cabinetry	30.00
Spring Rain Paint Package	30.00
USA Standards	n/c
Customer Value Package	31,050.00
Residential Refrigerator	n/c
No Washer/Dryer	n/c
IN Motion DISH Satellite System	n/c
Power Theater Seating Sofa	1,125.00
Ins Lippert 4000 series windows	n/c

UNIT TOTAL **341,535.00**

DEALER INSTALLED OPTIONS

This is provided as an information resource only. Previous owner(s) may have removed, altered or changed equipment after the unit was originally delivered.

DIMENSIONS

Exterior height:.....144.00"

Exterior width:.....101.00"

CAPACITIES

Fresh water tank (gals.):...60.00

Gray water tank (gals.):....30.00

Black water/toilet tank (gals.):.....30.00

Propane (lbs.):.....83

Propane (gals.):.....19

Water heater (gals.):.....6.00

TIRES

Tire size (front):.....245/70R19.5G

Tire size (mid):.....

Tire size (rear):.....245/70R19.5G

Some dimensions may be rounded and may vary from the actual dimensions

***Weights may be estimated calculations and may vary from the actual weight

- refer to the vehicle weight labels for actual weights***

Floorplans, features and specifications are subject to change without notice.