



Launch



Serial #: 1JSPEBBH1P1SY8083
 Model: 19Y LAUNCH MHB
 VIN#: W1W4EBVY3NT085147
 Model Year: 2023 Dealer Name:

Manufacturer's Suggested Retail Price \$231,375.00

TOTAL AMOUNT DOES NOT INCLUDE STATE AND LOCAL TAXES OR LICENSE FEES. THE PRICE SHOWN ABOVE MAY OR MAY NOT BE REPRESENTATIVE OF THE ACTUAL SELLING PRICE OF SIMILAR RECREATIONAL VEHICLES IN YOUR AREA.

Standard Equipment

Optional Equipment

THE FOLLOWING ITEMS ARE STANDARD ON THIS MODEL AT NO EXTRA CHARGE

OPTIONAL EQUIPMENT INSTALLED ON THIS VEHICLE BY MANUFACTURER

- STANDARD EXTERIOR EQUIPMENT**
- Mercedes-Benz® Sprinter 2500 4x4 van with 144 in. wheelbase
 - GVWR- 9,050 lb.
 - GCWR- 13,930 lb.
 - 3.0L V6 engine with 188HP and 325 ft.-lb. torque
 - 7-speed automatic transmission
 - 220 amp alternator
 - Daytime running headlamps
 - Power folding/heated side-view mirrors
 - 5,000 lb. rear hitch receiver with 7 pin connector
 - 12V chassis battery
 - 24.5 gal. fuel tank (diesel)
 - 5.8 gal DEF Tank
 - 48V - 210 amp hour smart lithium battery providing 10KW hours of power
 - 3,500W inverter
 - 2nd 48V alternator dedicated to lithium battery
 - 30 amp electrical service with detachable power cord
 - 200W of roof-mounted solar panels
 - Slow charge solar panel for chassis battery
 - Utility center with water controls and outside hose
 - City water connection
 - Winterization drain system
 - 12V demand water pump
 - Water filtration system
 - House battery disconnect switch
 - Aqua View® SHOWERMISER™ water management system
 - Heated grey tank (12V pad) with skid plate
 - Interior-mounted fresh water tank
 - LED-lit running boards for cab and entry doors
 - 110V exterior outlet
 - Portable solar plug
 - LED-lit holding tank valves
 - Side screen door with magnetic and zipper close offs
 - Rear screen door with roll-up and black out capabilities
 - Fold-down exterior table
 - On-board air compressor with front and rear chucks
 - Remote keyless entry
- CUSTOMER VALUE PACKAGE**
- E-Z DRIVE™: Koni® shocks, heavy-duty rear stabilizer bar
 - Carefree® armless patio awning with LED light strip and wind sensor
 - Double roof rack and moveable roof ladder
 - Front and rear wind deflectors with front LED light bar
 - Hydronic heating system with LED touchscreen control
 - 48V Coleman®-Mach® 10 air conditioner
 - Black aluminum wheels with BFGoodrich® All-Terrain T/A® KO2® tires

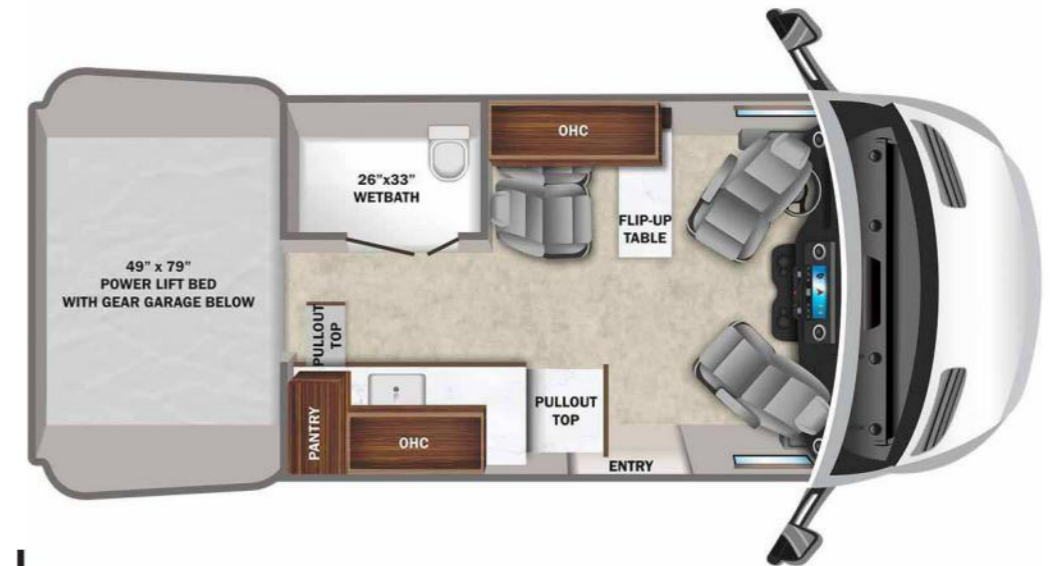
- STANDARD INTERIOR EQUIPMENT**
- 10.25 in. MBUX infotainment center
 - Power windows and door locks
 - A/C and adaptive cruise control
 - Active brake assist
 - Heated power swivel driver/passenger seats
 - Smartphone tray with wireless charging
 - Rain-sensing wiper system
 - Lane keeping assist
 - Blind spot assist
 - Traffic sign assist
 - Leather-wrapped tilt steering wheel with integrated controls
 - Cab area privacy shade
 - Custom-molded, vinyl-wrapped ABS interior wall panels
 - Soft-touch vinyl ceiling
 - High-intensity LED ceiling lights
 - Tecnoform® European-style, cabinetry
 - Tecnoform® pull-out kitchen countertop extension
 - Pantry with Tecnoform® pull-out extension
 - Durable rubber flooring
 - Firefly Multiplex system
 - (2) sliding vented windows with cassette shades
 - Rear dual-pane acrylic window with cassette shades
 - MaxxAir Deluxe roof vent
 - (2) additional cab bucket seats with slide and recline features
 - BOSS® dual-zone radio with Bluetooth®
 - Collapsible dinette table
 - 3 cu.ft. DC refrigerator
 - Portable induction cooktop
 - Stainless steel sink
 - 110V/USB outlets throughout
 - Drop-down overhead bed with 750 lb. capacity
 - Fiberglass side pods create larger sleeping surface
 - Rear garage under bed with L-track mounts for securing cargo
 - (2) recessed under-bed storage bags
 - RAM® Tough-Track™ mounts throughout
 - All-in-one wet bath with shower and cassette toilet
 - Removable bamboo shelves in wet bath
 - Powered roof vent in bathroom
 - Retractable clothes line in shower
 - Seatbelts in all seating locations
 - Driver and passenger airbags
 - Smoke alarm
 - Carbon monoxide detector
 - Fire extinguisher

Base price	212,250.00
Serenity	n/c
Standard Exterior	n/c
USA Standards	n/c
Customer Value Package	19,125.00

UNIT TOTAL **231,375.00**

DEALER INSTALLED OPTIONS

This is provided as an information resource only. Previous owner(s) may have removed, altered or changed equipment after the unit was originally delivered.



DIMENSIONS

Exterior height:.....121.00"
 Exterior width:.....82.00"

CAPACITIES

Fresh water tank (gals.):...22.00
 Gray water tank (gals.):....20.00
 Black water/toilet tank (gals.):.....4.75
 Propane (lbs.):.....0
 Propane (gals.):.....0
 Water heater (gals.):.....0.00

TIRES

Tire size (front):.....LT245/70R17 E
 Tire size (mid):.....
 Tire size (rear):.....LT245/70R17 E

Some dimensions may be rounded and may vary from the actual dimensions

Weights may be estimated calculations and may vary from the actual weight - refer to the vehicle weight labels for actual weights

Floorplans, features and specifications are subject to change without notice.