



TN207658

Vision XL



Serial #: 1JSMEABU7S1UC8099  
Model: 36C VISION XL MHA  
VIN#: 1F66F5DN3R0A01381  
Model Year: 2025 Dealer Name: LA MESA RV CENTER, INC.  
3255 EAST IRVINGTON ROAD  
TUCSON, AZ 85714  
USA

Standard Equipment

Optional Equipment

THE FOLLOWING ITEMS ARE STANDARD ON THIS MODEL  
AT NO EXTRA CHARGE

OPTIONAL EQUIPMENT INSTALLED ON THIS VEHICLE  
BY MANUFACTURER

STANDARD EXTERIOR EQUIPMENT

- Ford® F53 chassis
- GVWR - 22,000 lb. (34B, 34G) 24,000 lb. (36A, 36C)
- GCWR - 26,000 lb. (34B, 34G), 30,000 lb. (36A, 36C)
- 7.3L V-8 335 HP engine with 468 ft.-lb. torque
- 6-speed automatic TorqShift® transmission with overdrive and tow haul mode
- 210-amp alternator
- Catalytic converter theft deterrent
- G-rated highway tires - 235/80R22.5 (34B, 34G), 255/80R22.5 (36A, 36C)
- Front and rear disc, 4-wheel anti-lock brakes
- 5,000 lb. rear hitch receiver with dual connector and 7-pin plug
- 12V chassis battery
- 80 gal. fuel tank
- TuffShell™ vacuum-bond laminated roof, floor and sidewalls
- Bead-foam insulation (R-24 max roof, R-9 max floor, R-8 max walls)
- One-piece, seamless fiberglass front cap with partial paint
- One-piece, seamless fiberglass rear cap
- One-piece, seamless, crowned fiberglass roof
- Fiberglass exterior walls with vinyl graphics
- Entrance door with industry's largest travel-view window
- Electric-powered entrance steps
- Lockable pass-through storage compartments with metal slam latches
- Third brake light
- Roof ladder
- Prep for satellite dish
- Cable TV hookup with RG-6 coax
- Winegard 2.0 Wi-Fi/4G antenna
- 200W solar panel with dual controller
- (2) 6V AGM (220Ah) house batteries on slideout tray
- Transfer switch with reverse polarity protection
- Detachable power cord
- 16.5 gal. propane tank (56-lb.)
- LP quick-connect hookup
- Heated holding tanks (12V pads)
- Exterior utility center
- Winterization drain system
- Black tank flush
- Outside shower
- 12V demand water pump
- Water filtration system

STANDARD INTERIOR EQUIPMENT

- 120 in. panoramic windshield
- 6-way power and swivel driver/passenger seats
- Soft-touch, vinyl-wrapped automotive dash
- Tilt steering wheel
- Cruise control
- Hill start assist
- Electronic stability control
- Traction control
- Auxiliary start
- Power front privacy shade with manual side privacy shades
- Firefly Multiplex system - wall-mounted touchscreen and mobile app for total coach control
- 84 in. interior ceiling height with padded vinyl ceiling
- High-intensity recessed LED ceiling lights
- LED-lit fascia
- Hardwood cabinet doors and drawer fronts
- Ball-bearing drawer guides
- 30,000 BTU auto-ignition ducted furnace (34B, 34G, 36C)
- (2) 30,000 BTU auto-ignition ducted furnaces (36A)
- Electric fireplace (34B, 34G , 36C)
- Entegra-exclusive, easy-operation legless dinette table
- 2-point lap safety belts in all designated seating locations
- Car seat tethers (select floorplans)
- JBL® audio system
- Smoke alarm
- Carbon monoxide detector
- Fire extinguisher
- Residential refrigerator
- Furrion® all-in-one cooktop and oven
- Residential-size microwave
- Decorative kitchen backsplash
- Walk-around, king-size bed with bedspread and nightstands
- USB port and wireless charging in nightstands
- Under-bed storage (select models)
- LED HD Smart TV in bedroom
- Large wardrobes
- Bunks with industry-exclusive, 300 lb. capacity each (36A)
- Wall-mounted tablet holder in each bunk (36A)
- Shower with decorative surround, glass door, skylight and light
- Recessed stainless steel bathroom sink
- Porcelain toilet with foot flush
- Powered roof vent in bathroom with wall switch

CUSTOMER VALUE PACKAGE

- E-Z Drive™ Elite: Computer-balanced driveshaft, Bilstein® steering stabilizer, Koni® shocks, variable-rate front and rear jounce bumpers, heavy-duty front and rear stabilizer bars, 22.5 in. Michelin® tires
- Automatic hydraulic leveling jacks
- Lippert™ 4000 series frameless bonded windows
- 15,000 BTU A/C unit with heat pump and second 13,500 BTU A/C unit
- Exterior entertainment center with outside speakers and LED HD Smart TV mounted on swivel bracket
- Electric patio awning with LED lights
- Slideout cover awnings
- 5,500W generator with auto-gen start
- 1,200W inverter
- 50-amp electrical service
- 10 gal. gas/electric water heater
- Sony® infotainment center with Apple CarPlay® and Android Auto™
- Backup and side-view cameras
- Removable driver/passenger cockpit table
- LED-lit, solid-surface kitchen countertops with recessed stainless steel sink and sink covers
- LED HD Smart TV in living area
- Integrated day/night cassette shades

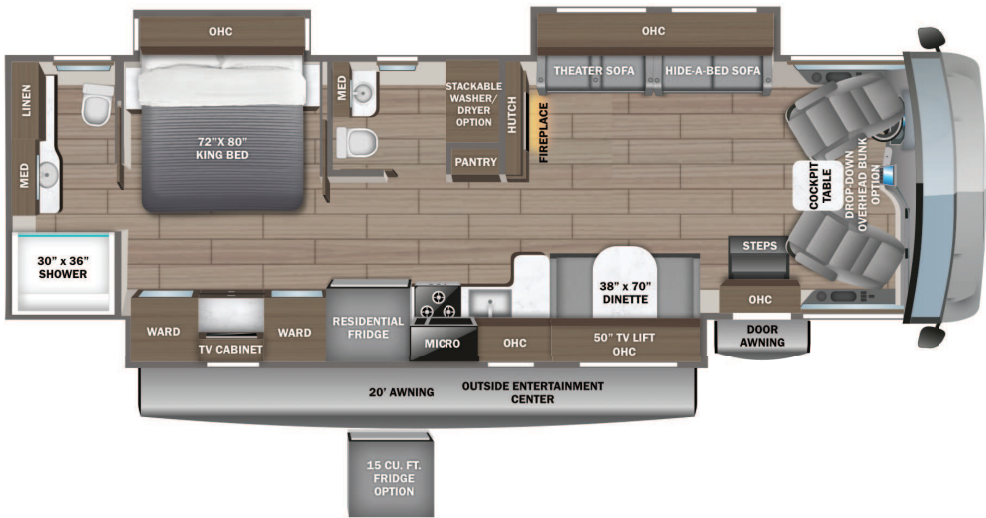
Base price 221,393.00  
BENTON DECOR n/c  
THUNDER PAINT 14,993.00  
USA STANDARDS n/c  
CUSTOMER VALUE PACKAGE 11,250.00  
RESIDENTIAL REFRIGERATOR n/c  
NO WASHER/DRYER n/c  
FRONT OVERHEAD BUNK 3,293.00

UNIT TOTAL 250,929.00

DEALER INSTALLED OPTIONS

Manufacturer’s Suggested Retail Price \$250,929.00

TOTAL AMOUNT DOES NOT INCLUDE STATE AND LOCAL TAXES OR LICENSE FEES. THE PRICE SHOWN ABOVE MAY OR MAY NOT BE REPRESENTATIVE OF THE ACTUAL SELLING PRICE OF SIMILAR RECREATIONAL VEHICLES IN YOUR AREA.



DIMENSIONS

Exterior height:.....154.00"  
Exterior width:.....101.00"

CAPACITIES

Fresh water tank (gals.):...72.00  
Gray water tank (gals.):....72.00  
Black water/toilet tank (gals.):.....72.00  
Propane (lbs.):.....56  
Propane (gals.):.....13  
Water heater (gals.):.....10.00

TIRES

Tire size (front):.....255/80R22.5G  
Tire size (mid):.....  
Tire size (rear):.....255/80R22.5G

\*\*\*Some dimensions may be rounded and may vary from the acutal dimensions\*\*\*  
\*\*\*Weights may be estimated calculations and may vary from the actual weight  
- refer to the vehicle weight labels for actual weights\*\*\*  
Floorplans, features and specifications are subject to change without notice.