



TN223555

**Accolade**



Serial #: 1JSNECBU1T1HM8107  
 Model: 37M ACCOLADE MHC  
 VIN#: 4UZADVFC7TCWV8372  
 Model Year: 2026 Dealer Name: LA MESA RV CENTER, INC.

3255 EAST IRVINGTON ROAD  
 TUCSON, AZ 85714  
 USA

**Manufacturer's Suggested Retail Price**

**\$394,959.00**

TOTAL AMOUNT DOES NOT INCLUDE STATE AND LOCAL TAXES OR LICENSE FEES. THE PRICE SHOWN ABOVE MAY OR MAY NOT BE REPRESENTATIVE OF THE ACTUAL SELLING PRICE OF SIMILAR RECREATIONAL VEHICLES IN YOUR AREA.

**Standard Equipment**

**Optional Equipment**

THE FOLLOWING ITEMS ARE STANDARD ON THIS MODEL

OPTIONAL EQUIPMENT INSTALLED ON THIS VEHICLE BY MANUFACTURER

**STANDARD EXTERIOR EQUIPMENT**

- Freightliner® S2RV Plus chassis
- GVWR - 31,000 lb.
- GCWR - 43,000 lb.
- Cummins® ISB 6.7L 360 HP diesel engine with 800 ft.-lb. torque
- Allison® 3000 MH automatic transmission
- 185-amp alternator
- G-rated highway tires - 275/80R22.5
- Alcoa® aluminum rims
- Engine exhaust brake
- 12,000 lb. hitch with 1,200 lb. tongue capacity
- 7-pin plug
- Dual 12V chassis batteries
- 100 gal. fuel tank
- 10 gal. DEF tank
- TuffShell™ vacuum-bond laminated roof, floor and sidewalls
- Bead-foam insulation (R-24 max roof, R-9 max floor, R-8 max walls)
- One-piece, seamless, crowned fiberglass roof
- Premium Sikkens full-body paint
- Automatic hydraulic leveling jacks
- Entrance door with industry's largest travel-view window
- Electric-powered entrance steps
- Slideout cover awnings
- Exterior entertainment center with JBL® outside speakers and LED HD Smart TV mounted on swivel bracket
- Winegard® In-motion satellite dish
- Carpeted, full pass-through storage compartments with Keyed Alike lockable slam-latch doors
- Thetford® Sani-Con Turbo macerator system
- Third brake light
- Roof ladder
- Cable TV hookup with RG-6 coax and video selector switch
- Winegard 2.0 Wi-Fi/4G antenna
- 8,000W diesel generator with auto-gen start
- 200W solar panel with dual controller
- (4) 6V AGM (220Ah) house batteries on slideout tray
- Transfer switch with reverse polarity protection
- 24.5 gal. propane tank (83 lb.)
- LP quick-connect hookup
- Exterior utility center
- Winterization drain system
- Black tank flush
- Outside shower
- 12V demand water pump
- Water filtration system

**STANDARD INTERIOR EQUIPMENT**

- 6-way power driver and passenger seats
- Deluxe heated, remote-controlled, side-view mirrors
- Tire pressure monitoring system (TPMS)
- Tilt steering wheel
- Cruise control
- Detroit automatic wipers/headlights
- Power windows and door locks
- Auxiliary start switch
- Custom-molded ABS surround in cab-over area
- Overhead bunk with 750 lb. capacity
- Privacy curtains for cab area
- Firefly Multiplex system - wall-mounted touchscreen and mobile app for total coach control
- 84 in. interior ceiling height with padded vinyl ceiling
- Integrated day/night cassette shades
- High-intensity recessed LED ceiling lights
- LED-lit fascia
- Vinyl plank flooring
- Hardwood cabinet doors and drawer fronts
- Soft-close cabinet doors and drawers
- Deluxe hidden cabinet hinges
- Ball-bearing drawer guides
- 30,000 BTU auto-ignition furnace
- Suburban tankless water heater
- Electric fireplace
- Entegra-exclusive, easy-operation legless dinette table
- 2-point lap safety belts in all designated seating locations
- Car seat tethers (select floorplans)
- LED HD Smart TV in living area
- JBL® audio system
- Wood-framed kitchen window
- 2-burner induction cooktop
- LED-lit, solid-surface kitchen countertops
- Multi-function sink with cup washer and veggie tray
- Walk-around, king-size bed with power head lift, bedspread and nightstands
- USB port and wireless charging in nightstands
- Under-bed storage (select models)
- LED HD Smart TV in bedroom
- Large wardrobes
- Bunks with industry-exclusive 300 lb. capacity each (37L)
- Shower with decorative surround, glass door, skylight and light
- Aqua View® SHOWERMISER™ water management system
- Porcelain toilet with foot flush
- Recessed stainless-steel bathroom sink
- Powered roof vent in bathroom with wall switch
- Smoke alarm
- Carbon monoxide detector
- Fire extinguisher

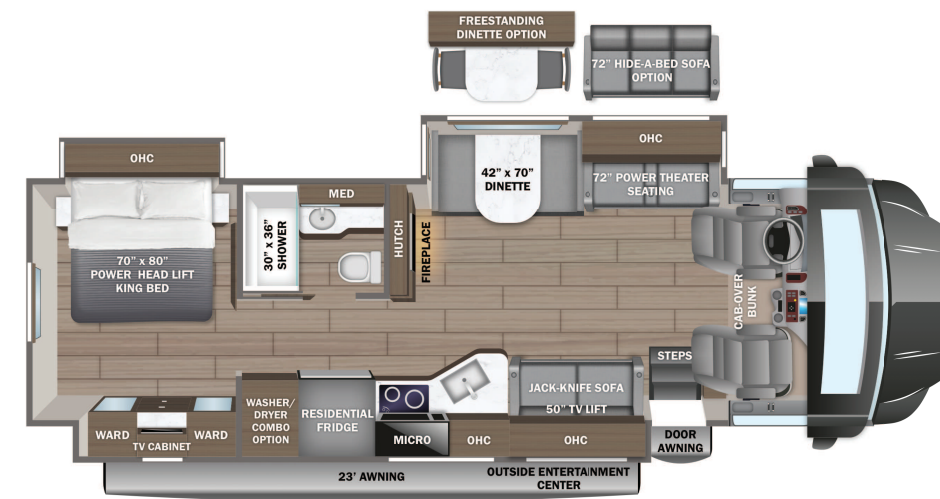
**CUSTOMER VALUE PACKAGE**

- E-Z Drive™ Premier: Computer-balanced driveshaft, rear air suspension, heavy-duty rear stabilizer bar, full air brakes, SACHS shocks
- One-piece, seamless fiberglass front and rear caps
- Automotive-bonded panoramic window in front cap with power shade
- Lippert™ 4000 series dual-pane frameless bonded windows
- (2) 15,000 BTU A/C units with heat pump on main A/C
- Electric patio awning with LED lights
- 2,000W pure sine wave inverter
- Power cord reel with 50-amp service
- Sony® infotainment center with tilt/swivel, Apple CarPlay® and Android Auto™
- Backup and side-view cameras
- Residential refrigerator
- Residential-size convection microwave

Base price	384,300.00
FARMHOUSE DECOR	593.00
DAYBREAK FULL PAINT	30.00
USA STANDARDS	n/c
26 FR S2RV 31000 279"	
360 TF501	n/c
CUSTOMER VALUE PACKAGE	6,750.00
RESIDENTIAL REFRIGERATOR	n/c
WASHER/DRYER COMBINATION	1,943.00
IN MOTION DISH SATELLITE SYSTEM	n/c
WINEGARD 2.0 CONNECT	n/c
SLIDEOUT TRAY W/ELECTRIC COOLER IN BASEMENT	1,343.00
NON-BLACKOUT	n/c
POWER THEATER SEATING	
SOFA	n/c

UNIT TOTAL **394,959.00**

DEALER INSTALLED OPTIONS



**DIMENSIONS**

Exterior height:.....160.00"  
 Exterior width:.....101.00"

**CAPACITIES**

Fresh water tank (gals.):...72.00  
 Gray water tank (gals.):...81.00  
 Black water/toilet tank (gals):.....50.00  
 Propane (lbs.):.....83  
 Propane (gals.):.....19  
 Water heater (gals.):.....0.00

**TIRES**

Tire size (front):.....275/80R22.5G  
 Tire size (mid):.....  
 Tire size (rear):.....275/80R22.5G

\*\*\*Some dimensions may be rounded and may vary from the actual dimensions\*\*\*  
 \*\*\*Weights may be estimated calculations and may vary from the actual weight  
 - refer to the vehicle weight labels for actual weights\*\*\*  
 Floorplans, features and specifications are subject to change without notice.



Document Identifier: MSRP SHEET