



Accolade XT



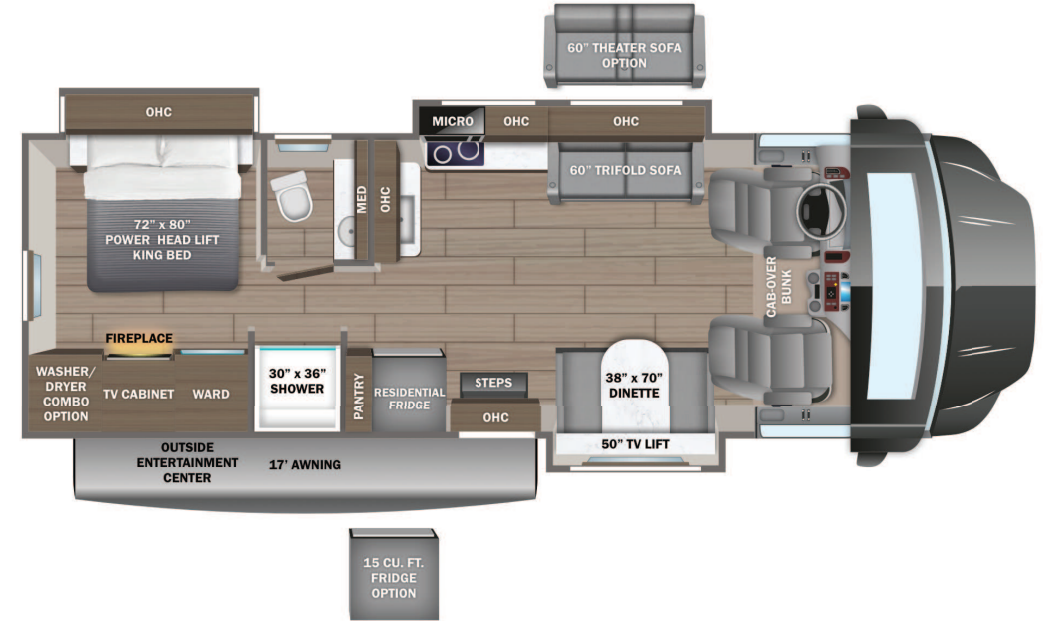
Serial #: 1JSNECBT8S1JL8076
 Model: 35L ACCOLADE XT MHC
 VIN#: 1FDF6LT7RDA23553
 Model Year: 2025 Dealer Name: LA MESA RV CENTER

7525 WEST MCDOWELL ROAD
 PHOENIX, AZ 85035
 USA

Manufacturer's Suggested Retail Price

\$370,785.00

TOTAL AMOUNT DOES NOT INCLUDE STATE AND LOCAL TAXES OR LICENSE FEES. THE PRICE SHOWN ABOVE MAY OR MAY NOT BE REPRESENTATIVE OF THE ACTUAL SELLING PRICE OF SIMILAR RECREATIONAL VEHICLES IN YOUR AREA.



Standard Equipment

THE FOLLOWING ITEMS ARE STANDARD ON THIS MODEL

STANDARD EXTERIOR EQUIPMENT

- Ford® F550 4X4 chassis (29T)
- Ford® F600 4X4 chassis (32U, 35L)
- GVWR - 19,500 lb. (29T); 22,000 lb. (32U, 35L)
- GCWR - 31,500 lb. (29T); 34,000 lb. (32U, 35L)
- 6.7L Power Stroke V8 Turbo diesel engine with block heater - 330 HP at 2,200 RPM and 950 ft. lb. torque at 1,800 RPM
- 10-speed automatic transmission
- 332-amp alternator (dual)
- All-terrain tires - 245/70R19.5 (225/70R19.5 on F550 chassis)
- HiSpec matte black aluminum rims
- 2 in. BDS radius arm suspension lift
- 12,000 lb. rear hitch receiver with 7-pin plug
- Hellwig® helper springs (29T)
- Ford® AdvanceTrac® with RSC® (roll stability control) and trailer sway control
- Integrated trailer brake controller
- Single chassis battery (750 CCA 78 AH)
- Dual fuel tanks (26.5 gal. and 40 gal.)
- Bead-foam insulation (R-24 max roof, R-9 max floor, R-8 max walls)
- One-piece, seamless, crowned fiberglass roof
- Lippert™ 4000 series frameless bonded windows
- Premium Sikkens full-body paint
- Automatic hydraulic leveling jacks
- Electric-powered entrance steps
- Slideout cover awnings
- Exterior entertainment center with outside speakers, LED HD Smart TV and Bluetooth® receiver
- Winegard® In-motion satellite dish
- Full pass-through storage compartments with lockable slam latch doors
- Flush-mount LED marker lights
- Third brake light
- Roof ladder
- KING Jack™ antenna
- Cable TV hookup with RG-6 coax
- 6,000W diesel generator and auto-gen start
- (2) 6V AGM house batteries
- Transfer switch with reverse polarity protection
- 50-amp service
- Powered cord reel
- 24.5 gal. propane tank (83 lb.)
- LP quick-connect hookup
- Exterior utility center
- Winterization drain system
- Outside shower and black tank flush
- 12V demand water pump
- Water filtration system
- CUSTOMER VALUE PACKAGE**
- E-Z Drive™ Premier: Computer-balanced driveshaft, heavy-duty front and rear stabilizer bars, Koni® shocks
- One-piece, seamless, fiberglass front cap with auxiliary flood lights
- One-piece, seamless, fiberglass rear cap with auxiliary flood lights (32U, 35L)
- Automotive-bonded, panoramic window in front cap with power shade
- 15,000 BTU A/C unit with heat pump and second 13,500 BTU A/C unit
- Electric, wind-sensing, legless patio awning with LED lights
- 2,000W pure sine wave inverter
- 200W solar panel with dual controller
- Starlink satellite internet system
- Backup and side-view cameras
- Two-burner induction cooktop
- 10 cu. ft. 12V refrigerator (29T)
- 18 cu.ft. residential refrigerator (32U, 35L)
- Convection microwave oven

STANDARD INTERIOR EQUIPMENT

- Ford® SYNC® 4 infotainment center with Apple® CarPlay™ and Android Auto™
- Audible lane departure warning
- Pre-Collision Assist® with automatic emergency braking (AEB)
- SOS Post Crash Alert System™
- Driver and passenger airbags
- Safety Canopy® system with roll-fold side-curtain airbags
- Remote keyless entry and perimeter anti-theft alarm
- SecuriLock® anti-theft ignition
- Quad dual-beam halogen headlights
- Rainlamp wiper activated headlights
- Remote start
- Adjustable gas/brake pedals
- Individual tire pressure monitoring system (TPMS) (N/A on F550 chassis)
- Cruise control
- Power windows and door locks
- Auxiliary start switch
- 8-way power driver seat
- Tilt steering wheel
- Custom-molded ABS surround in cab-over area
- Overhead bunk with 750 lb. capacity
- Privacy curtains for cab area
- Firefly Multiplex system - wall-mounted touchscreen and mobile app for total coach control
- 84 in. interior ceiling height with padded vinyl ceiling
- High-intensity, recessed LED ceiling lights
- Integrated day/night cassette shades
- Raised-panel hardwood cabinet doors and drawer fronts
- Deluxe hidden cabinet hinges
- Ball-bearing drawer guides
- 30,000 BTU auto-ignition furnace
- 10 gal. gas/electric water heater
- Entegra-exclusive, easy-operation legless dinette table (32U, 35L)
- 2-point lap safety belts in all designated seating locations
- Car seat tethers (select floorplans)
- LED HD Smart TV in living area
- JBL® audio system
- Smoke alarm
- Carbon monoxide detector
- Fire extinguisher
- LED-lit, solid-surface kitchen countertops with recessed stainless steel sink and sink covers
- Pull-out countertop extension (select models)
- Rear U-shaped power sofa converts to 80 in. x 96 in. bed (29T)
- Walk-around, king-size bed with bedspread and nightstands (32U, 35L)
- LED HD Smart TV in bedroom (32U, 35L)
- Furrion® electric fireplace in bedroom (35L)
- Under-bed storage (select models)
- Large wardrobes
- Decorative shower surround with glass door, skylight and light
- Macerating porcelain toilet
- Powered roof vent in bathroom with wall switch

Optional Equipment

OPTIONAL EQUIPMENT INSTALLED ON THIS VEHICLE BY MANUFACTURER

Base price	338,550.00
COLD SPRING DECOR	n/c
HUNTINGTON CABINETRY	30.00
ALPINE BRYUM PAINT PACKAGE	30.00
USA STANDARDS	n/c
CUSTOMER VALUE PACKAGE	31,050.00
RESIDENTIAL REFRIGERATOR	n/c
NO WASHER/DRYER	n/c
IN MOTION DISH SATELLITE SYSTEM	n/c
POWER THEATER SEATING SOFA	1,125.00

UNIT TOTAL **370,785.00**

DEALER INSTALLED OPTIONS

DIMENSIONS

Exterior height:.....150.00"
 Exterior width:.....101.00"

CAPACITIES

Fresh water tank (gals.):...64.00
 Gray water tank (gals.):...30.00
 Black water/toilet tank (gals.):.....30.00
 Propane (lbs.):.....83
 Propane (gals.):.....19
 Water heater (gals.):.....10.00

TIRES

Tire size (front):.....245/70R19.5G
 Tire size (mid):.....
 Tire size (rear):.....245/70R19.5G

Some dimensions may be rounded and may vary from the actual dimensions
 Weights may be estimated calculations and may vary from the actual weight - refer to the vehicle weight labels for actual weights
 Floorplans, features and specifications are subject to change without notice.

LAMESA

Stock Number:	VN208830
VIN:	1FDFF6LT7RDA23553
Manufacturer:	ENTEGRA
Product:	ACCOLADE XT
Floorplan:	35L

Manufacturer's Suggested Retail Price: **\$370,785**

Dealer Installed Options:



VanUp Adventure Edition

- Warn 16.5Ti Synthetic Winch
- Nacho Quatro Ditch Lights
- Nacho Grande 4 HI Bumper Lights (4)
- VanUp 8 Gang Switch Panel

Total Added Equipment and Installation **\$9,998**

Total Price* **\$380,783**

* Dealer's price for this vehicle as equipped. This price DOES NOT include any government fees and taxes, any finance charges, any dealer document processing charge, any electronic filing charge and any emission testing charge.

This addendum has been added by La Mesa RV, not the manufacturer, to reflect any additional charges for items added.

THIS IS NOT AN AUTHORIZED FACTORY STICKER.