



# Vision



Serial #: 1JSMEABP3S1AS8140  
 Model: 29S VISION MHA  
 VIN#: 1F65F5DN7R0A04036  
 Model Year: 2025 Dealer Name: LA MESA RV CENTER  
 7525 WEST MCDOWELL ROAD  
 PHOENIX, AZ 85035  
 USA

## Manufacturer's Suggested Retail Price

\$212,785.00

TOTAL AMOUNT DOES NOT INCLUDE STATE AND LOCAL TAXES OR LICENSE FEES. THE PRICE SHOWN ABOVE MAY OR MAY NOT BE REPRESENTATIVE OF THE ACTUAL SELLING PRICE OF SIMILAR RECREATIONAL VEHICLES IN YOUR AREA.

### Standard Equipment

THE FOLLOWING ITEMS ARE STANDARD ON THIS MODEL

#### STANDARD EXTERIOR EQUIPMENT

- Ford® F53 chassis
- GVWR - 18,000 lb.
- GCWR - 23,000 lb.
- 7.3L V-8 335 HP engine with 468 ft.-lb. torque
- 6-speed automatic TorqShift® transmission with overdrive and tow haul mode
- 210-amp alternator
- Catalytic converter theft deterrent
- G-rated highway tires-245/70R19.5
- Front and rear disc, 4-wheel anti-lock brakes
- 5,000 lb. rear hitch receiver with dual connector and 7-pin plug
- 12V chassis battery
- 80 gal. fuel tank
- TuffShell™ vacuum-bond laminated roof, floor and sidewalls
- Bead-foam insulation (R-24 max roof, R-9 max floor, R-8 max walls)
- One-piece, seamless fiberglass front cap with partial paint
- Fiberglass exterior walls with vinyl graphics
- Automatic hydraulic leveling jacks
- Frameless windows
- Entrance door with industry's largest travel-view window
- Electric-powered entrance steps
- Lockable pass-through storage compartments with metal slam latches
- Third brake light
- 4 in. tube bumper with sewer hose storage
- Roof ladder
- Prep for satellite dish
- Cable TV hookup with RG-6 coax
- Winegard 2.0 Wi-Fi/4G antenna
- 5,500W generator
- 200W solar panel with dual controller
- (2) 6V AGM (220ah) house batteries on slideout tray
- Transfer switch with reverse polarity protection
- 50-amp electrical service
- Detachable power cord
- 16.5 gal. propane tank (56 lb.)
- LP quick-connect hookup
- Heated holding tanks (12V pads)
- Exterior utility center
- Winterization drain system
- Black tank flush
- Outside shower
- 12V demand water pump
- Water filtration system

#### STANDARD INTERIOR EQUIPMENT

- 120 in. panoramic windshield
- Swivel driver and passenger seats
- 6-way power driver seat
- Soft-touch, vinyl-wrapped automotive dash
- Tilt steering wheel
- Cruise control
- Hill start assist
- Electronic stability control
- Traction control
- Auxiliary start
- Power front privacy shade with manual side privacy shades
- 84 in. interior ceiling height
- High-intensity recessed LED ceiling lights
- LED-lit fascia
- Hardwood cabinet doors and drawer fronts
- Ball-bearing drawer guides
- 15,000 BTU A/C unit with heat pump and second 13,500 BTU A/C unit
- Auto-ignition ducted furnace - 30,000 BTU
- 6 gal. gas/electric DSI auto-ignition water heater
- Entegra-exclusive, easy-operation legless dinette table
- 2-point lap safety belts in all designated seating locations
- Car seat tethers (select floorplans)
- JBL® audio system
- Smoke alarm
- Carbon monoxide detector
- Fire extinguisher
- 10 cu. ft. 12V refrigerator
- Furrion® all-in-one cooktop and oven
- Residential-size microwave
- Large, recessed, stainless steel kitchen sink with cover
- LED-lit pressed countertops
- Flip-up countertop extension (select models)
- Decorative kitchen backsplash
- Pop-up charging station in kitchen with 120V outlets and USB ports
- Walk-around, queen-size bed with bedspread and nightstands (king size in 27A)
- USB port and wireless charging in nightstands
- Under-bed storage (select models)
- Bedroom TV prep
- Large wardrobes
- Bunks with industry-exclusive 300 lb. capacity each (29F)
- Wall-mounted tablet holder in each bunk (29F)
- Shower with decorative surround, glass door, skylight and light
- Recessed stainless steel bathroom sink
- Porcelain toilet with foot flush
- Powered roof vent in bathroom with wall switch

#### CUSTOMER VALUE PACKAGE

- E-Z Drive™: Computer-balanced driveshaft, Bilstein® steering stabilizer, jounce bumpers, heavy-duty front and rear stabilizer bars, SACHS shocks
- One-piece, seamless, crowned fiberglass roof
- Exterior entertainment center with outside speakers and LED HD Smart TV mounted on swivel bracket
- Electric patio awning with LED lights
- Slideout cover awnings
- 1,200W inverter
- Sony® infotainment center with Apple CarPlay® and Android Auto™
- Backup and side-view cameras
- Removable driver/passenger cockpit table
- LED HD Smart TV in living area
- Blackout night roller shades

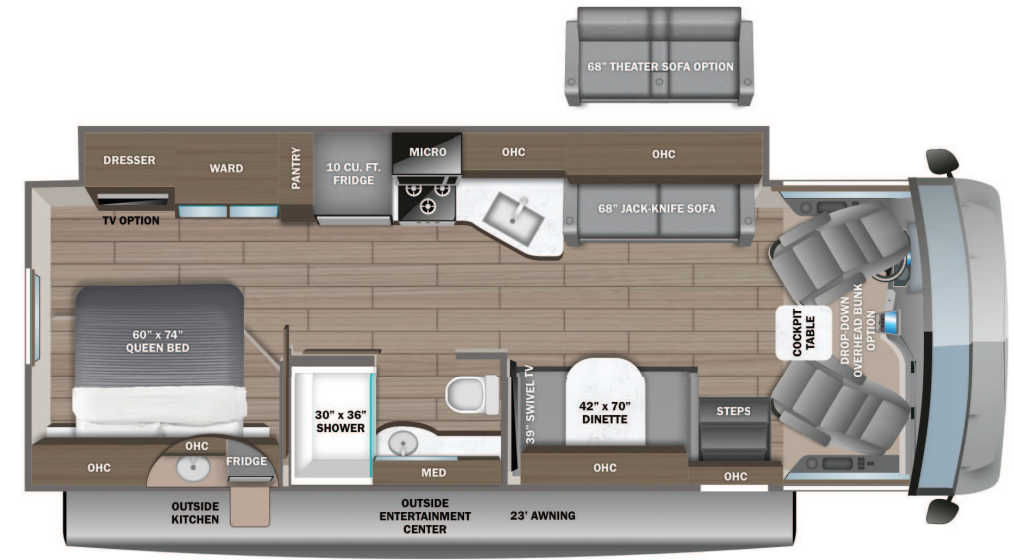
### Optional Equipment

OPTIONAL EQUIPMENT INSTALLED ON THIS VEHICLE BY MANUFACTURER

Base price	183,668.00
ASHBROOK DECOR	n/c
ECHO GRAY PAINT	n/c
USA STANDARDS	n/c
CUSTOMER VALUE PACKAGE	9,923.00
BEDROOM TV	383.00
THEATER SEATING SOFA	525.00
FRONT OVERHEAD BUNK	3,293.00

UNIT TOTAL **212,785.00**

DEALER INSTALLED OPTIONS



#### DIMENSIONS

Exterior height:.....149.00"  
 Exterior width:.....101.00"

#### CAPACITIES

Fresh water tank (gals.):...72.00  
 Gray water tank (gals.):...49.00  
 Black water/toilet tank (gals.):.....50.00  
 Propane (lbs.):.....56  
 Propane (gals.):.....13  
 Water heater (gals.):.....6.00

#### TIRES

Tire size (front):.....245/70R19.5G  
 Tire size (mid):.....  
 Tire size (rear):.....245/70R19.5G

\*\*\*Some dimensions may be rounded and may vary from the actual dimensions\*\*\*  
 \*\*\*Weights may be estimated calculations and may vary from the actual weight - refer to the vehicle weight labels for actual weights\*\*\*  
 Floorplans, features and specifications are subject to change without notice.