



Condor



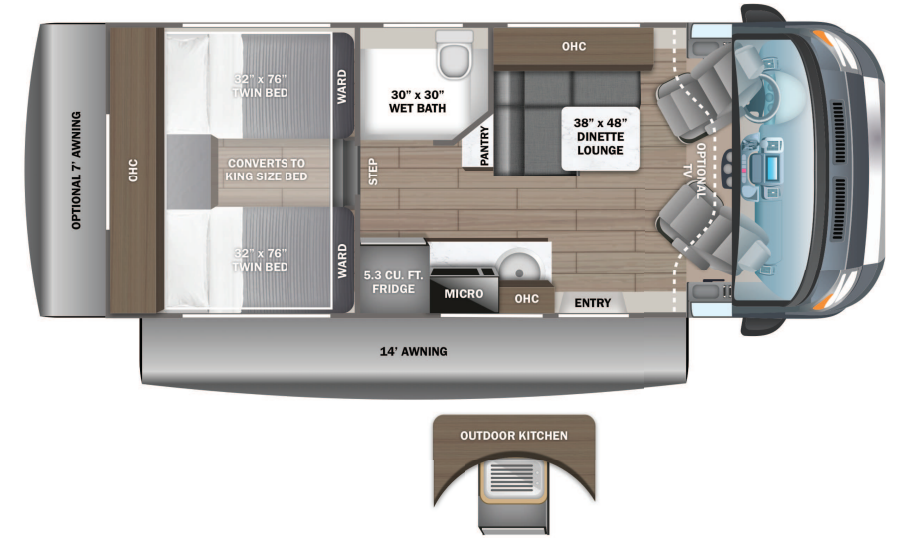
Serial #: 1JSLECBK6T1FT8074
 Model: 22T CONDOR MHC
 VIN#: 1FDUR8PG7RKB36166
 Model Year: 2026 Dealer Name: LA MESA RV CENTER
 7525 WEST MCDOWELL ROAD
 PHOENIX, AZ 85035
 USA

VN220573

Manufacturer's Suggested Retail Price

\$265,397.00

TOTAL AMOUNT DOES NOT INCLUDE STATE AND LOCAL TAXES OR LICENSE FEES. THE PRICE SHOWN ABOVE MAY OR MAY NOT BE REPRESENTATIVE OF THE ACTUAL SELLING PRICE OF SIMILAR RECREATIONAL VEHICLES IN YOUR AREA.



Standard Equipment

Optional Equipment

THE FOLLOWING ITEMS ARE STANDARD ON THIS MODEL

OPTIONAL EQUIPMENT INSTALLED ON THIS VEHICLE BY MANUFACTURER

STANDARD EXTERIOR EQUIPMENT

- Ford® Transit 350HD AWD chassis
- 156 in. wheelbase
- GVWR - 11,000 lb.
- GCWR - 15,000 lb.
- 3.5L EcoBoost V6 310 HP engine with 400 ft-lb. torque
- 10-speed transmission
- 3.73 limited slip axle
- 250-amp alternator
- 205/75R16C all-season tires
- Matte black aluminum wheels
- Power anti-lock brakes with power steering
- (2) 12V AGM chassis batteries (70 amp-hr)
- 31 gal. fuel tank (gas)
- TuffShell™ vacuum-bond laminated roof, floor and sidewalls
- Bead-foam insulation (R-24 max roof, R-9 max floor, R-8 max walls)
- One-piece, seamless, fiberglass roof
- Fiberglass exterior walls with partial paint and vinyl graphics
- Dual-pane acrylic windows
- Heated rear garage (28 in. x 81 in. x 43 in)
- L-track, (2) 120V charging ports and (1) 12V charging port in garage
- Electric patio awning with auto-retract and LED lights
- Daytime running headlamps
- Cable TV hookup with RG-6 coax
- Winegard® Connect 2.0 4G/Wi-Fi/digital TV antenna
- 2,800W gas generator with auto-gen start
- 30-amp electrical service with detachable power cord
- 120V exterior outlet
- 6 gal. propane tank (20 lb.)
- LP quick-connect hookup
- LED-lit holding tank valves
- Winterization drain system
- 12V demand water pump
- Water filtration system
- Outside shower

STANDARD INTERIOR EQUIPMENT

- 12 in. SYNC 4 HD/NAV/IACC multi-function display
- 4-way swivel driver and passenger seats
- Tilt and telescoping steering wheel
- Power-adjusting, heated side-view mirrors
- Intelligent adaptive cruise control
- Lane-keeping system
- Forward collision warning
- Pre-collision assist with automatic emergency braking (AEB)
- Post-collision braking
- SOS Post Crash Alert System™
- Driver and passenger airbags
- Safety Canopy® side-curtain airbags
- Ford® AdvanceTrac® with RSC® (roll stability control)
- Side wind stabilization
- Hill start assist
- SecuriLock® passive anti-theft system with engine immobilizer
- Autolocking drive away with crash unlocking
- Remote keyless entry
- FordPass™ Connect
- Tire pressure monitoring system (TPMS)
- Rain-sensing wiper system
- Automatic high-beam headlights
- Wiper-activated headlights
- Power windows and door locks
- Privacy shades for cab windows
- Custom-molded ABS cab-over with storage
- Soft-touch vinyl ceiling
- High-intensity LED ceiling lights
- Residential vinyl flooring
- Firefly Multiplex system - wall-mounted touchscreen for total coach control
- 13,500 BTU air conditioner
- 17,000 BTU Timberline Binar 5D hydronic heating system with LED touchscreen control
- Cassette screens and night shades
- Soft-close cabinet doors and drawers
- Adjustable table with multiple mounts
- 6.8 cu.ft. refrigerator
- Portable induction cooktop
- Convection microwave
- Stainless steel sink
- Pressed countertops
- (2) twin-size beds with filler cushion converts to king-size bed
- All-in-one wet bath with shower and cassette toilet
- Shower with curtain surround
- Powered roof vent in wet bath (N/A with pop-top option)
- Medicine cabinet with mirror
- Seatbelts for driver/passenger seats and select cab locations
- Smoke alarm
- Carbon monoxide detector
- Fire extinguisher

CUSTOMER VALUE PACKAGE

- E-Z Drive™: Computer-balanced driveshaft, heavy-duty rear stabilizer bar, standard front stabilizer bar and Hellwig® helper springs
- One-piece, seamless, fiberglass front cap
- 3.9kWh lithium battery (12V with 310 amp-hr)
- 2,000W inverter
- 360W roof mounted solar panel with dual controller
- Expandable side port with second dual bank controller for solar
- Backup camera
- Aqua View® SHOWERMISER™ water management system
- Internal holding tanks

Base price	226,043.00
OAKLEY DECOR	n/c
CONIFER FULL PAINT	14,993.00
USA STANDARDS	n/c
CUSTOMER VALUE PACKAGE	20,400.00
CAB TV	675.00
NO STARLINK	n/c
OUTDOOR KITCHEN	2,093.00
NO POPTOP	n/c
PATIO AWNING	n/c
REAR AWNING	1,193.00

UNIT TOTAL **265,397.00**

DEALER INSTALLED OPTIONS

DIMENSIONS

Exterior height:.....133.00"
 Exterior width:.....85.00"

CAPACITIES

Fresh water tank (gals.):...53.00
 Gray water tank (gals.):...51.00
 Black water/toilet tank (gals.):.....4.75
 Propane (lbs.):.....20
 Propane (gals.):.....4
 Water heater (gals.):.....0.00

TIRES

Tire size (front):.....205/75R16C
 Tire size (mid):.....
 Tire size (rear):.....205/75R16C

Some dimensions may be rounded and may vary from the actual dimensions
 ***Weights may be estimated calculations and may vary from the actual weight
 - refer to the vehicle weight labels for actual weights***
 Floorplans, features and specifications are subject to change without notice.



Document Identifier: MSRP SHEET