

WN 225474



Odyssey SE

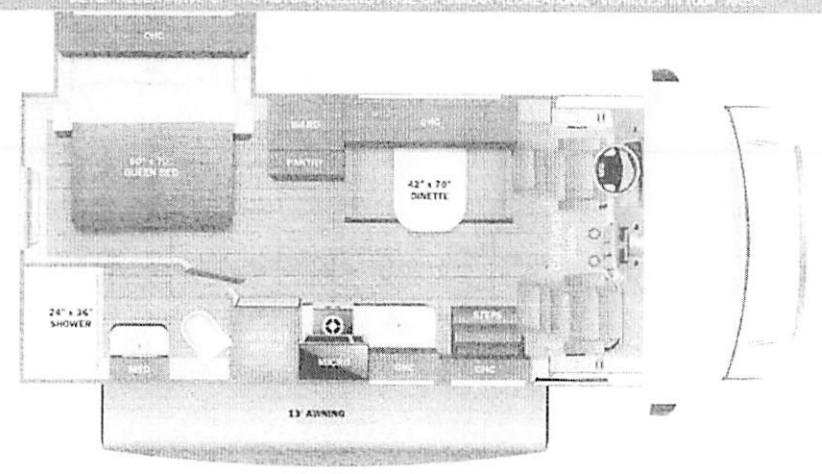


Serial #: 1JSLECL3V1G28066
 Model: 22CF ODYSSEY SE MHC
 VIN#: 1FDWE3FN3VDD02605
 Model Year: 2027 Dealer Name: REC VAN

5070 BRANDIN CT
 FREMONT, CA 94538
 USA

Manufacturer's Suggested Retail Price **\$136,718.00**

TOTAL AMOUNT DOES NOT INCLUDE STATE AND LOCAL TAXES OR LICENSE FEES. THIS PRICE IS AN ESTIMATE AND DOES NOT REPRESENTATIVE OF THE ACTUAL SELLING PRICE OF SIMILAR RECREATIONAL VEHICLES IN YOUR AREA.



Standard Equipment

Optional Equipment

THE FOLLOWING ITEMS ARE STANDARD ON THIS MODEL

OPTIONAL EQUIPMENT INSTALLED ON THIS VEHICLE BY MANUFACTURER

- STANDARD EXTERIOR EQUIPMENT**
- Ford E-350 chassis (22AF, 22AF, 22CF, 22CF, 22TF)
 - GVWR - 12,500 lb. (22AF, 22AF, 22CF, 22CF, 22TF)
 - GVWR - 14,500 lb. (22AF, 22AF, 22CF, 22CF, 22TF)
 - Ford E-350 chassis (31FF)
 - GVWR - 14,500 lb. (31FF)
 - GVWR - 22,000 lb. (31FF)
 - 7.3L 283hp engine with 456 ft. lb. torque
 - 6-speed TorqShift series transmission with overdrive
 - 210-amp alternator
 - 5,000 lb. hitch with 500 lb. tongue capacity and 4-pin plug (22AF, 22AF, 22CF, 22CF, 22TF, 22TF)
 - 5,000 lb. hitch with 750 lb. tongue capacity and 4-pin plug (31FF)
 - Catalytic converter theft detector
 - Erated highway tires - LT225/75R16
 - Tire pressure monitoring system (TPMS)
 - 12V chassis battery
 - Power anti-lock brakes with power steering
 - TuffShell™ vacuum-bond laminated roof, fiver and side walls
 - Dead foam insulation (R-24 max roof, R-9 max floor, R-5 max walls)
 - Tuff-Flx™ PVC laminated roof
 - Aluminum roofing hardware
 - Fiberglass exterior walls with vinyl graphics
 - Entrance door with industry largest travel once and a half
 - Electric-powered entrance step with integrated house battery compartment
 - Tuff-brake legs
 - Cable TV hookup with RG-6 coax
 - Digital antenna with signal booster
 - 4,000W generator
 - Solar prep
 - 12V house battery
 - Transfer switch with remote battery protection
 - Spring electrical service
 - 12.2 gal. propane tank (41 lb.)
 - LP quick-connect hookup
 - Exterior utility center
 - Ventilation drain system
 - Outside shower
 - 12V demand water pump
 - Water filtration system

- STANDARD INTERIOR EQUIPMENT**
- Removable blind side-view mirrors
 - Hill start assist
 - 3.4 steering wheel
 - Cruise control
 - Electronic stability control
 - Traction control
 - Security alarm with theft signal
 - Power windows and door locks
 - A-key start switch
 - Driver and passenger airbags
 - Overhead bunk with 150 lb. capacity
 - 84 in. ceiling height
 - High-intensity recessed LED ceiling lights
 - Ball-bearing drawer guides
 - 42 in. x 16 in. U-shaped dinette (22AF, 22CF)
 - Entegra-exclusive easy-operation legless dinette table (22CF, 31FF, 29CF)
 - 46 in. dinette bench with removable table (22TF)
 - 2-point lap safety belts in all occupied seating locations
 - Interior entrance door grab handle
 - Inverter command center
 - Plated stainless knobs
 - 13,500 BTU ducted A/C
 - 31,000 BTU air-condition furnace
 - 42V BTU Suburban On-Demand HW Heater
 - 10 cu. ft. 12V refrigerator
 - 2-burner cooktop with flush cover
 - Convertible motorized oven
 - Stainless steel kitchen sink
 - 34 in. x 72 in. U-dinette converts to bed (22CF)
 - Queen-size bed with bedspread (22AF, 22CF, 31FF, 29CF)
 - (2) twin-size beds with five cushion convert-to-king-size bed (22TF)
 - Large windows (paled models)
 - Bunks with industry-leading 300 lb. capacity with (31FF)
 - Shower with decorative ABS surround
 - Stainless steel bathroom sink
 - Toilet with foot flush
 - Smoke alarm
 - Carbon monoxide detector
 - Fire extinguisher

Base price	126,968.00
AVALON DECOR	n/c
USA STANDARDS	n/c
27 FORD ESS 12500 158"	n/c
7.3L V8309	n/c
CUSTOMER VALUE PACKAGE	9,750.00
NO HYDRAULIC AUTO LEVELING JACKS	n/c
STANDARD HOUSE BATTERY	n/c
NO SOLAR PANEL	n/c

- CUSTOMER VALUE PACKAGE**
- One-piece stainless lowerplate front cap
 - Electric patio awning
 - Rock raising tank sprayer
 - Backup camera
 - LED HD Smart TV

UNIT TOTAL	136,718.00
DEALER INSTALLED OPTIONS	

DIMENSIONS

- External length (incl. hitch) 28'00"
- External width (incl. mirrors) 10'00"
- Tire size (front) LT225/75R16
- Tire size (rear) LT225/75R16
- Tire size (bunk) LT225/75R16

CAPACITIES

- Fresh water tank (gal) 27.00
- Gray water tank (gal) 29.00
- Black water tank (gal) 11.00
- Propane (gal) 4.00
- Propane (gal) 4.00
- Water heater (gal) 6.00

TIRES

- Tire size (front) LT225/75R16
- Tire size (rear) LT225/75R16
- Tire size (bunk) LT225/75R16

Some dimensions may be rounded and may vary from the actual dimensions
 Weights may be estimated calculations and may vary from the actual weight - refer to the vehicle weight labels for actual weights
 Floorplans, features and specifications are subject to change without notice.

